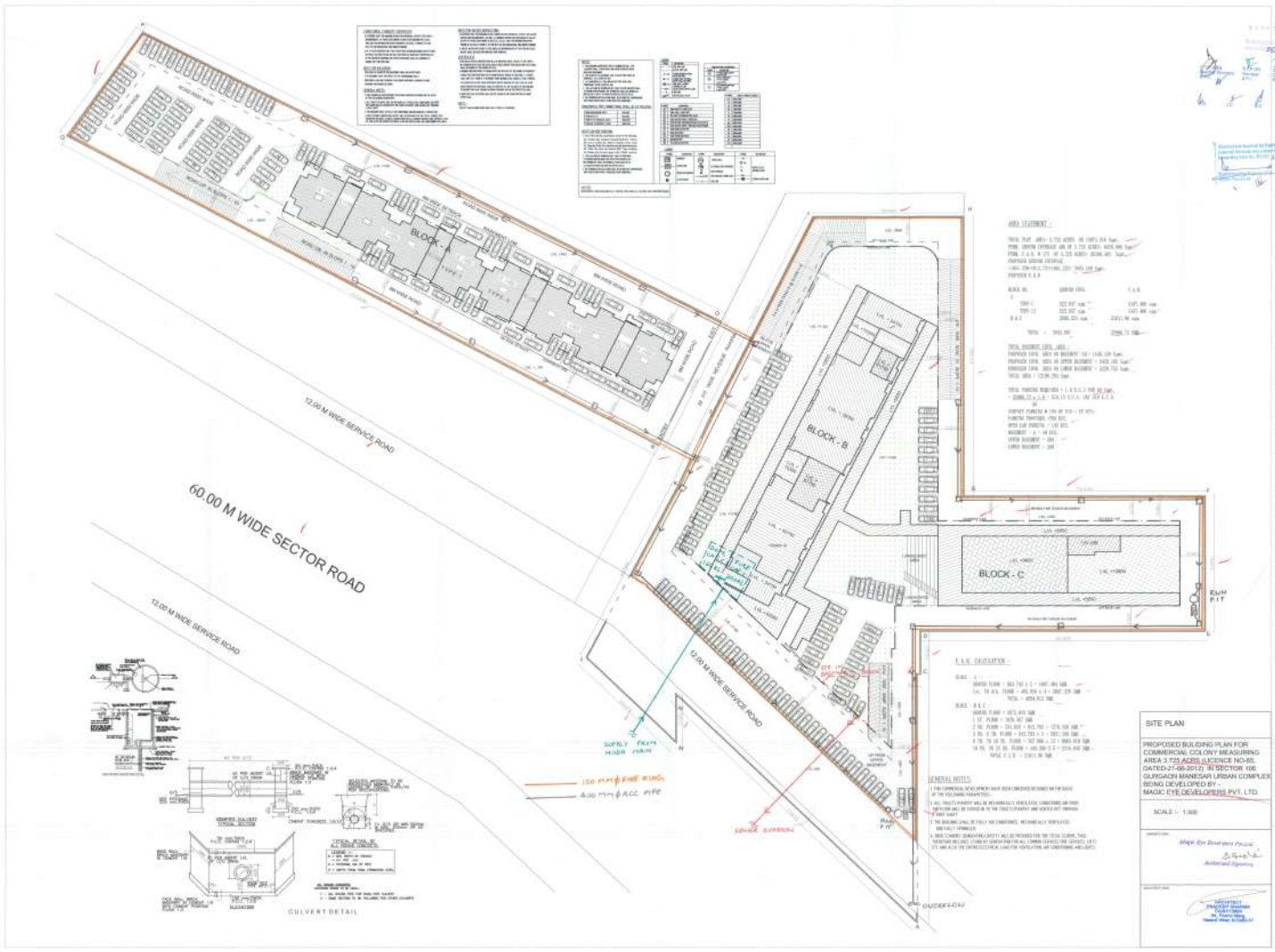


APPROVED  
 2022-12-04  
 12/04/2022



**GENERAL NOTES**

1. ALL DIMENSIONS ARE IN METERS UNLESS OTHERWISE SPECIFIED.
2. ALL CONSTRUCTION SHALL BE IN ACCORDANCE WITH THE LATEST EDITIONS OF THE IS CODES.
3. THE CONTRACTOR SHALL BE RESPONSIBLE FOR OBTAINING ALL NECESSARY PERMITS AND APPROVALS FROM THE LOCAL AUTHORITIES.
4. THE CONTRACTOR SHALL MAINTAIN ACCESS TO ALL ADJACENT PROPERTIES AT ALL TIMES.
5. ALL UTILITIES SHALL BE PROTECTED AND DEEPER THAN THE PROPOSED FOUNDATION LEVELS.
6. THE CONTRACTOR SHALL PROVIDE ADEQUATE DRAINAGE AND SEWERAGE SYSTEMS.
7. ALL MATERIALS AND WORKMANSHIP SHALL BE SUBJECT TO INSPECTION AND APPROVAL BY THE ENGINEER.
8. THE CONTRACTOR SHALL MAINTAIN RECORDS OF ALL CONSTRUCTION ACTIVITIES.
9. ALL UTILITIES SHALL BE PROTECTED AND DEEPER THAN THE PROPOSED FOUNDATION LEVELS.
10. THE CONTRACTOR SHALL PROVIDE ADEQUATE DRAINAGE AND SEWERAGE SYSTEMS.

**LEGEND**

12.00 M WIDE SERVICE ROAD	(Symbol)
60.00 M WIDE SECTOR ROAD	(Symbol)
1000MM DIA PIPE	(Symbol)
1500MM DIA PIPE	(Symbol)
1200MM DIA PIPE	(Symbol)
1500MM DIA CULVERT	(Symbol)
CONCRETE WALL	(Symbol)
ASPHALT DRIVEWAY	(Symbol)
LANDSCAPING	(Symbol)
UTILITY LINES	(Symbol)

**AREA CALCULATION**

TOTAL SITE AREA = 1,12,000 SQ. M.  
 FROM SITE PLAN AREA OF 1,12,000 SQ. M.  
 FROM 12.00 M WIDE SERVICE ROAD AREA = 1,12,000 SQ. M.  
 FROM 60.00 M WIDE SECTOR ROAD AREA = 1,12,000 SQ. M.  
 FROM 12.00 M WIDE SERVICE ROAD AREA = 1,12,000 SQ. M.  
 FROM 60.00 M WIDE SECTOR ROAD AREA = 1,12,000 SQ. M.  
 FROM 12.00 M WIDE SERVICE ROAD AREA = 1,12,000 SQ. M.

**AREA CALCULATION**

TOTAL SITE AREA = 1,12,000 SQ. M.  
 FROM SITE PLAN AREA OF 1,12,000 SQ. M.  
 FROM 12.00 M WIDE SERVICE ROAD AREA = 1,12,000 SQ. M.  
 FROM 60.00 M WIDE SECTOR ROAD AREA = 1,12,000 SQ. M.  
 FROM 12.00 M WIDE SERVICE ROAD AREA = 1,12,000 SQ. M.  
 FROM 60.00 M WIDE SECTOR ROAD AREA = 1,12,000 SQ. M.  
 FROM 12.00 M WIDE SERVICE ROAD AREA = 1,12,000 SQ. M.

**AREA CALCULATION**

TOTAL SITE AREA = 1,12,000 SQ. M.  
 FROM SITE PLAN AREA OF 1,12,000 SQ. M.  
 FROM 12.00 M WIDE SERVICE ROAD AREA = 1,12,000 SQ. M.  
 FROM 60.00 M WIDE SECTOR ROAD AREA = 1,12,000 SQ. M.  
 FROM 12.00 M WIDE SERVICE ROAD AREA = 1,12,000 SQ. M.  
 FROM 60.00 M WIDE SECTOR ROAD AREA = 1,12,000 SQ. M.  
 FROM 12.00 M WIDE SERVICE ROAD AREA = 1,12,000 SQ. M.

**AREA CALCULATION**

TOTAL SITE AREA = 1,12,000 SQ. M.  
 FROM SITE PLAN AREA OF 1,12,000 SQ. M.  
 FROM 12.00 M WIDE SERVICE ROAD AREA = 1,12,000 SQ. M.  
 FROM 60.00 M WIDE SECTOR ROAD AREA = 1,12,000 SQ. M.  
 FROM 12.00 M WIDE SERVICE ROAD AREA = 1,12,000 SQ. M.  
 FROM 60.00 M WIDE SECTOR ROAD AREA = 1,12,000 SQ. M.  
 FROM 12.00 M WIDE SERVICE ROAD AREA = 1,12,000 SQ. M.

**AREA CALCULATION**

TOTAL SITE AREA = 1,12,000 SQ. M.  
 FROM SITE PLAN AREA OF 1,12,000 SQ. M.  
 FROM 12.00 M WIDE SERVICE ROAD AREA = 1,12,000 SQ. M.  
 FROM 60.00 M WIDE SECTOR ROAD AREA = 1,12,000 SQ. M.  
 FROM 12.00 M WIDE SERVICE ROAD AREA = 1,12,000 SQ. M.  
 FROM 60.00 M WIDE SECTOR ROAD AREA = 1,12,000 SQ. M.  
 FROM 12.00 M WIDE SERVICE ROAD AREA = 1,12,000 SQ. M.

**AREA CALCULATION**

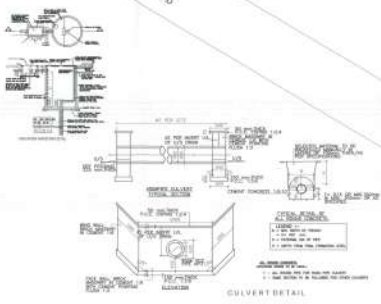
TOTAL SITE AREA = 1,12,000 SQ. M.  
 FROM SITE PLAN AREA OF 1,12,000 SQ. M.  
 FROM 12.00 M WIDE SERVICE ROAD AREA = 1,12,000 SQ. M.  
 FROM 60.00 M WIDE SECTOR ROAD AREA = 1,12,000 SQ. M.  
 FROM 12.00 M WIDE SERVICE ROAD AREA = 1,12,000 SQ. M.  
 FROM 60.00 M WIDE SECTOR ROAD AREA = 1,12,000 SQ. M.  
 FROM 12.00 M WIDE SERVICE ROAD AREA = 1,12,000 SQ. M.

**AREA CALCULATION**

TOTAL SITE AREA = 1,12,000 SQ. M.  
 FROM SITE PLAN AREA OF 1,12,000 SQ. M.  
 FROM 12.00 M WIDE SERVICE ROAD AREA = 1,12,000 SQ. M.  
 FROM 60.00 M WIDE SECTOR ROAD AREA = 1,12,000 SQ. M.  
 FROM 12.00 M WIDE SERVICE ROAD AREA = 1,12,000 SQ. M.  
 FROM 60.00 M WIDE SECTOR ROAD AREA = 1,12,000 SQ. M.  
 FROM 12.00 M WIDE SERVICE ROAD AREA = 1,12,000 SQ. M.

**AREA CALCULATION**

TOTAL SITE AREA = 1,12,000 SQ. M.  
 FROM SITE PLAN AREA OF 1,12,000 SQ. M.  
 FROM 12.00 M WIDE SERVICE ROAD AREA = 1,12,000 SQ. M.  
 FROM 60.00 M WIDE SECTOR ROAD AREA = 1,12,000 SQ. M.  
 FROM 12.00 M WIDE SERVICE ROAD AREA = 1,12,000 SQ. M.  
 FROM 60.00 M WIDE SECTOR ROAD AREA = 1,12,000 SQ. M.  
 FROM 12.00 M WIDE SERVICE ROAD AREA = 1,12,000 SQ. M.



**SITE PLAN**

PROPOSED BUILDING PLAN FOR  
 COMMERCIAL COLONY MEASURING  
 AREA 3 PDS ACRES LICENCE NO. 40,  
 DATED 27-06-2015 IN SECTOR 156,  
 GURGAON HANDEVA LEBAN COMPLEX  
 BEING DEVELOPED BY -  
 MAHARAJA DEVELOPERS PVT. LTD.

SCALE: 1:500

Project Engineer  
 Signature