

PARKING AREA CALCULATION

TOTAL AREA UNDER PARKING			
SUBTRACT	PREFIX	LENGTH	BREATH
A	1	1	35.70
B	1	1	35.70
C	1	1	35.70
D	1	1	35.70
E	1	1	35.70
F	1	1	35.70
G	1	1	35.70
H	1	1	35.70
I	1	1	35.70
J	1	1	35.70
K	1	1	35.70
L	1	1	35.70
M	1	1	35.70
N	1	1	35.70
O	1	1	35.70
P	1	1	35.70
Q	1	1	35.70
R	1	1	35.70
S	1	1	35.70
T	1	1	35.70
U	1	1	35.70
V	1	1	35.70
W	1	1	35.70
X	1	1	35.70
Y	1	1	35.70
Z	1	1	35.70
TOTAL ADDITION			1000.00
TOTAL SUBTRACTIONS			1000.00
TOTAL			0.00

AREA SCHEDULE

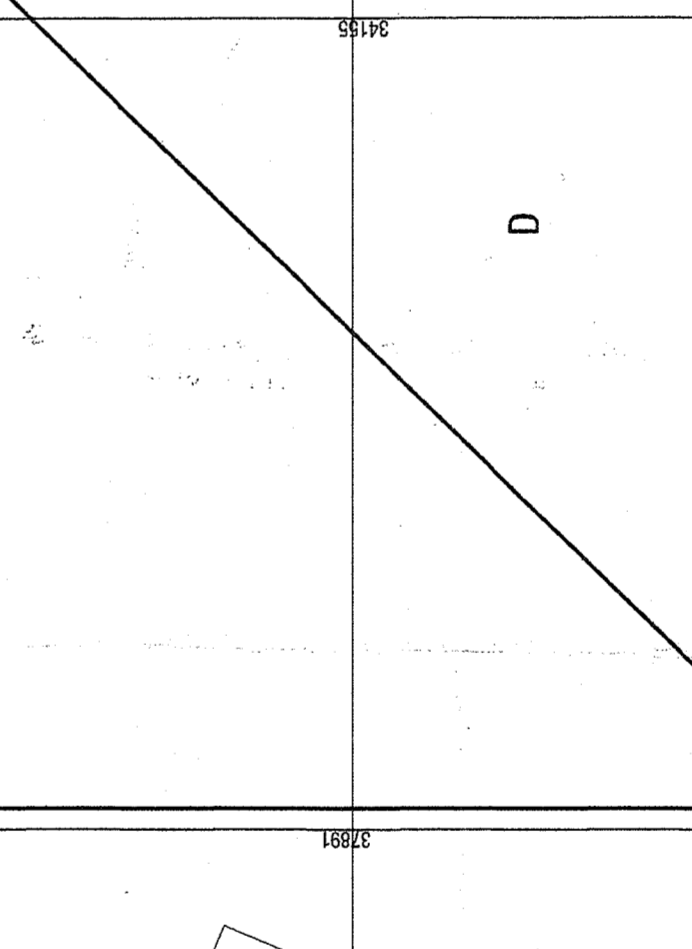
AREA CHART :-
 TOTAL PLOT AREA = 4.9725 ACRES OR 212,222.961 SQM
 PERM COMMERCIAL @ 45% IS 95,740.335 SQM OR 21.88 ACRES
 PERM F.A.R. OF COMMERCIAL @ 175% IS 148,607.507 SQM
 PROPOSED F.A.R. OF COMM. = 148,607.507 SQM
 AREA FOR GROUP HOUSING = 20,222.961 SQM
 PERM F.A.R. FOR GH @ 225% = 45,495.595 SQM
 PERM GROUND COVERAGE 50% OF 20,222.961 = 10,111.480 SQM
 + 203.03 (GREEN) + 186.12 (COMMUNITY) = 10,499.630 SQM
 REQUIRED GREEN AREA = 3043.26 SQM @ 15.12%
 PROPOSED GREEN AREA = 3043.26 SQM @ 15.12%
 PROPOSED COMMUNITY AREA = 186.12 SQM
 PROPOSED CRECHE AREA = 203.03 SQM

CAR PARKING CALCULATION

PARKING REQUIRED
 NO. OF PARKING REQUIRED=1/2 EGS PER FLAT & 418 E.C.S
 TWO WHEELERS PARKING REQUIRED 1 PER FLAT & 832
 PROPOSED PARKING
 EGS ACHIEVED
 CLASSIC 30 2500.00 85 CARS
 STILTS 25 8000.00 344 CARS
 TOTAL PARKING PROVIDED = 429 CARS
 TWO WHEELER PARKING PROVIDED = 429 CARS
 ON SURFACE = 547 SCOOTERS
 UNDER STILT = 438 SCOOTERS
 TOTAL SCOOTER PARKING = 985 SCOOTERS

TOWER	GROUND COVERAGE	STILT	GR.F.A.R.	NO. OF FLOORS	PAR.ACHIEVED	NO. OF UNITS
	SQ.M					25/HK
E	334.09	1481.733	42.337	5-11	3386.28	04
A	804.55	701.19	103.38	5-14	11978.02	08
B	720.170	618.81	103.38	5-14	11978.02	08
C	655.65	762.29	103.38	5-14	11978.02	08
D	428.46	188.36	239.50	5-14	5888.15	36
TOTAL	3042.92	5001.802	503.117		43,356.488	240
TOTAL					552	140

TOWER	GROUND COVERAGE	STILT	GR.F.A.R.	NO. OF FLOORS	PAR.ACHIEVED	NO. OF UNITS
	SQ.M					25/HK
E	334.09	1481.733	42.337	5-11	3386.28	04
A	804.55	701.19	103.38	5-14	11978.02	08
B	720.170	618.81	103.38	5-14	11978.02	08
C	655.65	762.29	103.38	5-14	11978.02	08
D	428.46	188.36	239.50	5-14	5888.15	36
TOTAL	3042.92	5001.802	503.117		43,356.488	240
TOTAL					552	140



GREEN AREA CALCULATION

NO. OF MAIN UNITS = 832 NGS.
 NO. OF PEOPLE IN 1 UNIT = 5 PERSONS
 POPULATION = 832 X 5 = 4160 PERSONS
 TOTAL POPULATION = 4160 PERSONS
 = 4160 / 4.7736 = 871.459 PERSON / ACRE
 SAY 872 PERSON / ACRE

SCALE : 1:100
 ARCHITECT'S SIGNATURE
 Architect: PRADEEP SHARMA
 PRADEEP SHARMA
 Checked and Found ok for Public Health (Green) Service only subject to compliance as per drawing No. SPP/2014/01/15
 FOR RECORDS AND DOCUMENTATION PVT. LD.
 Architect's Signature
 DRG. NO. - 01

PROPOSED BUILDING PLAN FOR AFFORDABLE GROUP HOUSING AREA MEASURING 5.0 ACRES (LICENSE NO 11 OF 2014 DATED 10-08-2014) IN SECTOR-02, GURGAON MANESAR URBAN COMPLEX BEING DEVELOPED BY MRS. UNIT RESORTS & RECREATION PVT.LTD.