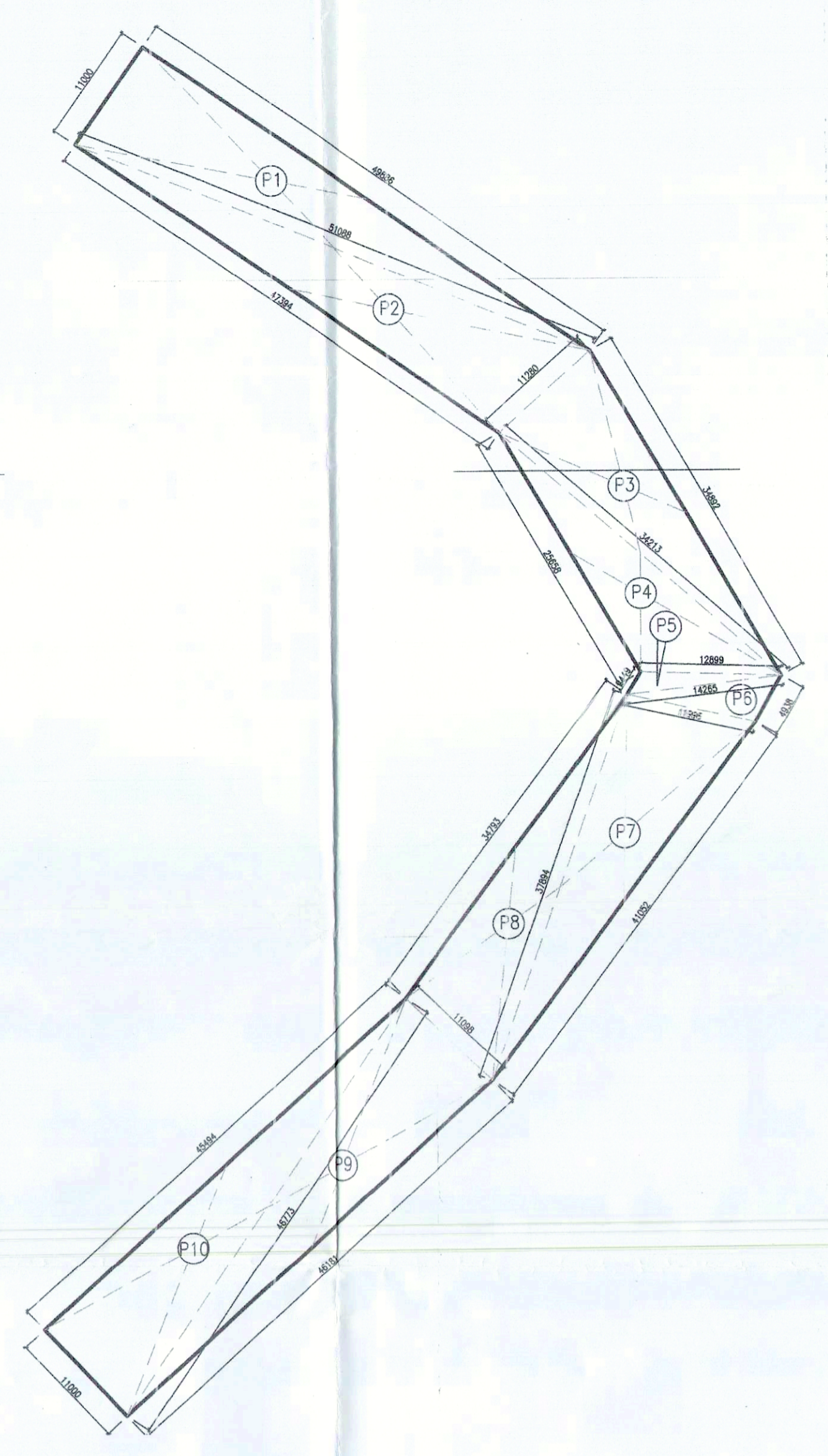


LAY OUT PLAN  
Not CD  
Not COPY



Note:-  
1. BUILDING WILL BE DESIGNED (STRUCTURES) AS PER RELEVANT IS CODES FOR EARTH QUAKE RESISTANCE.  
2. THE BUILDING COMPLY WITH FIRE NORMS

LEGEND:-

SYMBOL	DESCRIPTION
(Symbol)	400mm DRAINAGE LINE
(Symbol)	200mm SEWERAGE LINE
(Symbol)	150mm SOIL PIPE FROM BASEMENT
(Symbol)	150mm FIRE PIPE
(Symbol)	200mm RAIN WATER PIPE
(Symbol)	300mm WIDE COVERED DRAIN
(Symbol)	DAILY TRAP 100x100mm
(Symbol)	MANHOLE SEWERAGE 900mm
(Symbol)	MANHOLE DRAINAGE 1200x900mm
(Symbol)	DRAINAGE CHAMBER 800x800mm
(Symbol)	FIRE LEVEL
(Symbol)	CONNECTION LEVEL

ADDITION -P1 (PARKING AREA)

NO.	A	B	C	S	AREA OF RECTANGLE (SQ. FT.)	AREA (CSQM.)
P1	11,000	51,098	49,886	2	55,987	75280.535
P2	11,280	51,098	47,394	2	54,881	67953.679
P3	11,280	34,213	34,892	2	40,193	36830.594
P4	12,959	25,638	34,213	2	36,385	19909.921
P5	12,959	2,449	14,265	2	14,807	188.993
P6	11,996	4,938	14,265	2	15,600	799.763
P7	11,996	37,894	41,652	2	45,471	50965.511
P8	11,098	37,894	34,793	2	41,893	36621.346
P9	11,098	46,773	46,181	2	58,026	65778.187
P10	11,000	46,773	45,454	2	51,614	62498.474
						182,2906

TOTAL CAR PARKING AREA ON SURFACE = ADDITION (P1) = 1832,906 Sqm.  
CAP. OF THE CAR PARKING ON SURFACE @ 25sqm./ CAR = 1832.906/25 = 73.316 CAR SAY 74 CARS

AREA OF SITE AS PER ZONING = 2.861 Acres or 11982.725 Sqm.  
PERMISSIBLE F.A.R. (R175) = 20969.763 Sqm.  
FAR ACHIEVED = 20723.091 Sqm.  
PERMISSIBLE GROUND COVERAGE @40% = 4793.089 Sqm.  
PROPOSED GROUND COVERAGE = 4430.258 Sqm = 36.97%  
11982.725

PROPOSED CAR PARKING CAPACITY PROPOSED PERMISSIBLE  
SURFACE 74 65 65  
1st BASEMENT 172 155 155  
2nd BASEMENT 163 153 153  
3rd BASEMENT 170 170 170  
98 543 543

REQUIRED CAR PARKING @ 1 Car/50 SQM = 369.241 = 417.48 OR SAY 418 CARS  
CAR PARKING PROVIDED = 543 CARS  
SURFACE PARKING REQUIRED @15% = 418.15 = 62.7 Cars Say 63 Cars  
PROPOSED CAR PARKING ON SURFACE = 100  
TOTAL PARKING CAP. OF BASEMENT = 63 CARS

CAR PARKING CAPACITY OF 1st BASEMENT = 6033.256 sqm @ 1 car/ 35 SQM = 172.377 OR SAY 173 CARS  
CAR PARKING CAPACITY OF 2nd BASEMENT = 5761.814 sqm @ 1 car/ 35 SQM = 164.623 OR SAY 165 CARS  
CAR PARKING CAPACITY OF 3rd BASEMENT = 5952.613 sqm @ 1 car/ 35 SQM = 170.075 OR SAY 170 CARS

BLOCK TYPE	GROUND FLOOR	1st FLOOR	2nd FLOOR	3rd FLOOR	4th FLOOR	5th FLOOR	6th FLOOR	7th FLOOR	8th FLOOR	9th FLOOR	10th FLOOR	11th FLOOR	12th FLOOR	13th FLOOR	14th FLOOR	15th FLOOR	16th FLOOR	TOTAL GROUND COVERAGE	F.A.R. AREA (COL. 2 TO 16)	TOTAL BUILDUP AREA OF ALL BLOCKS (COL. 3 TO 20)	BLDG. HEIGHT EXCL. MACHINE ROOM (IN METERS)	
G+2 RETAIL (BLOCK-A)		959.066	442.582															3399.412	4801.901	4801.901	13.750	
G+2 RETAIL (BLOCK-B)	3395.412	822.79	289.722																1112.512	1112.512	13.750	
G+2 RETAIL (BLOCK-C)		780.587	218.536																999.123	999.123	13.750	
G+14 TOWER (BLOCK-D)	976.445	928.225	957.01	957.01	957.01	957.01	957.01	957.01	957.01	957.01	957.01	957.01	957.01	957.01	957.01	957.01	957.01	1030.846	13809.560	13863.961	95.900	
BASEMENT-1	0.00																		0.000	0.000	6709.948	0.000
BASEMENT-2	0.00																		0.000	0.000	6974.569	0.000
BASEMENT-3	0.00																		0.000	0.000	6279.919	0.000
TOTAL																		4430.258	20723.096	40741.873	0.000	

Project:  
PROPOSED COMMERCIAL COLONY AREA MEASURING 2.961 ACRES. (LICENCE NO. 110 OF 2010 DATED 29-12-2010) IN SECTOR-82-A, GURGAON, MANESAR URBAN COMPLEX BEING DEVELOPED BY SH. TEJPAL S/O SH. BADAM SINGH AND SMT. SAKUNTALA DEVI W/O SH. TEJPAL IN COLLABORATION WITH M/S VATIKA LTD.

Associate Architects  
**RISMS ARCHITECTS**  
RSMS ARCHITECTS PVT. LTD.  
69,Nora Niwas Bhowani Kunj (Behind D2), Vasant Kunj, New Delhi-110070.  
Tel.: 011-26898616, 26898617  
www.rsms-arch.com

Checked & Approved as per Public Health (Sanitation) Rules only subject to compliance in accordance with the provisions of the Act, 1987.  
ARCHITECT'S SEAL & SIGNATURE  
OWNER'S SEAL & SIGNATURE

For VATIKA LIMITED  
JULY-2011 Scale : 1:200 Drawing Title:- SITE PLAN Drawing No:- ST-01