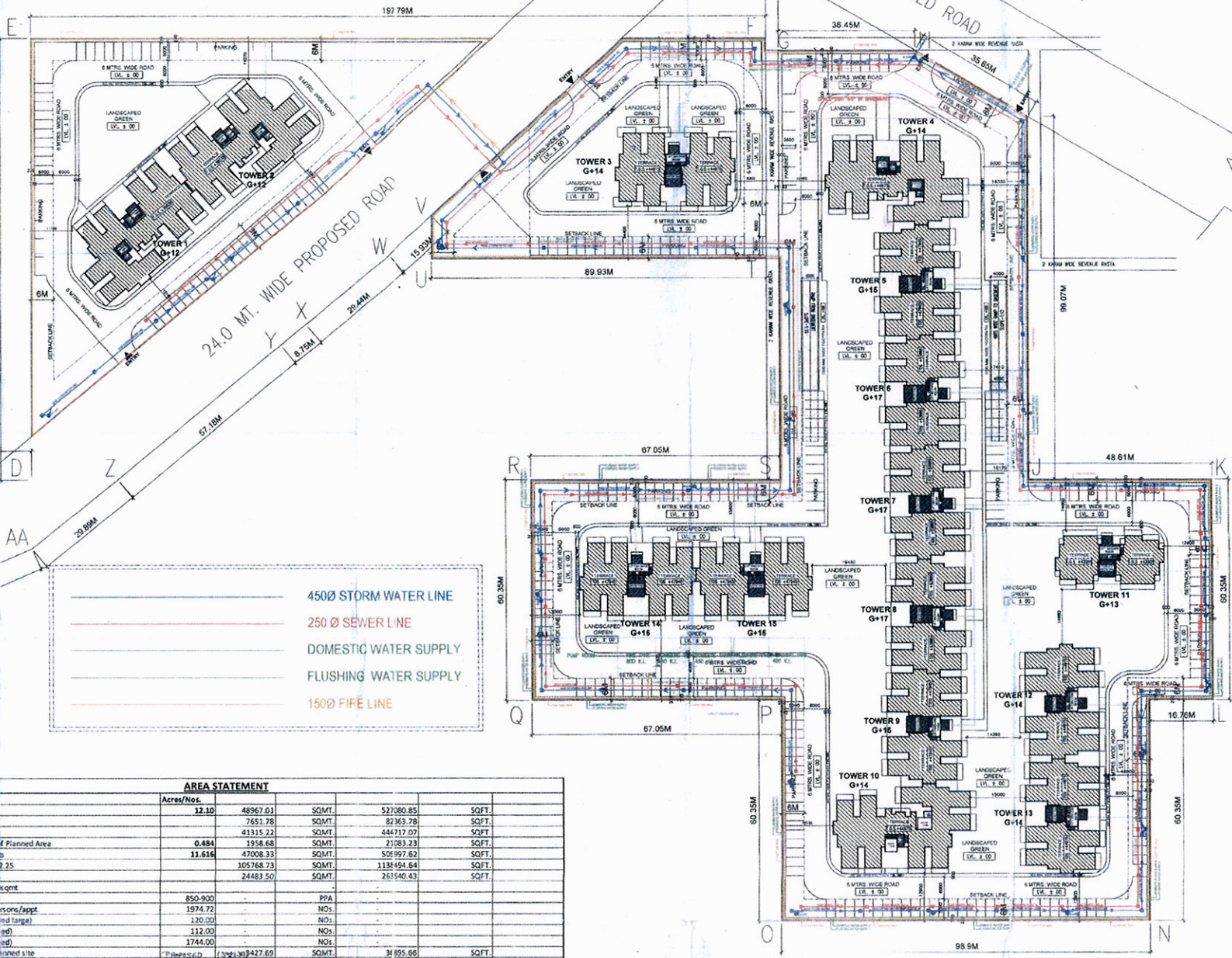
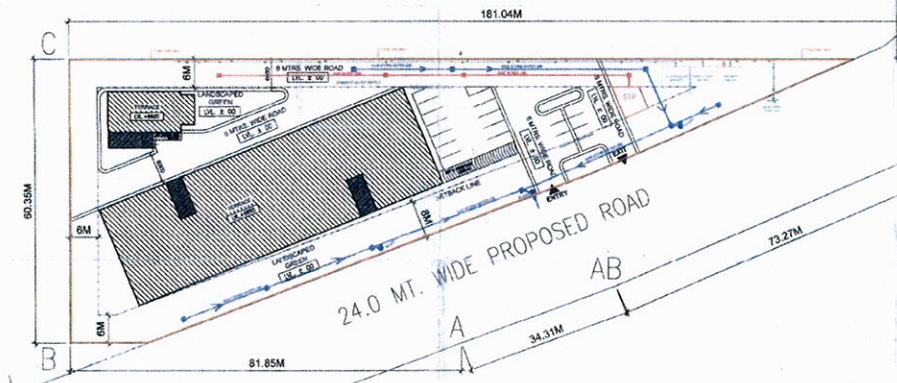
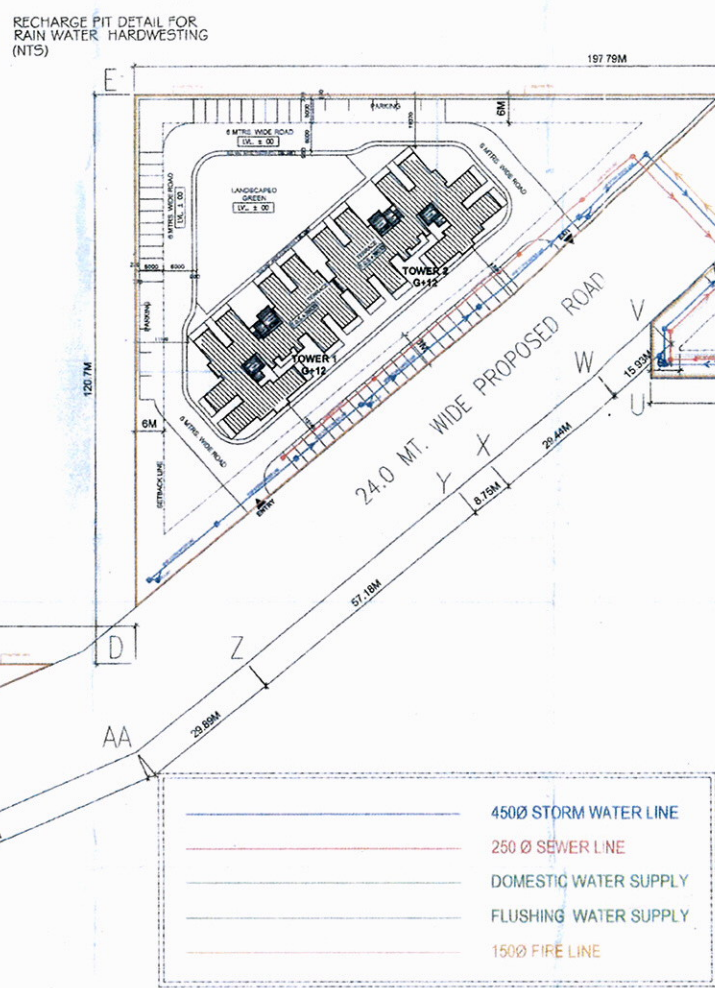
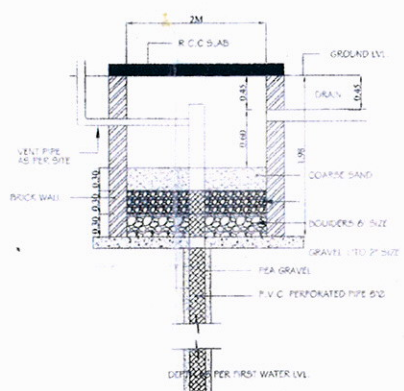


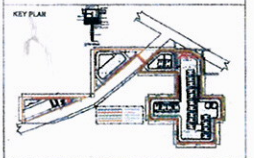
AREA STATEMENT (APARTMENTS, COMMERCIAL, ANGANWADI AND COMMUNITY CENTER)						
BUILDING TYPE	UNIT TYPE USED	GROUND COVERAGE (SQM)	AREA/FLOOR (SQM)	NO. OF FLOORS	TOTAL AREA PER FLOOR (SQM)	TOTAL FAR AREA (SQM)
TOWER 1	2 Bed units-L TYPE (GROUND)	619.07	551.18	1	551.18	551.18
	2 Bed units-L TYPE (TYPICAL)	541.911	541.911	12	6502.932	7854.113
TOWER 2	2 Bed units-L TYPE (GROUND)	619.07	551.18	1	551.18	551.18
	2 Bed units-L TYPE (TYPICAL)	541.911	541.911	12	6502.932	7854.113
TOWER 3	2 Bed units-L LARGE (GROUND)	547.218	478.858	1	478.858	478.858
	2 Bed units-L LARGE (TYPICAL)	431.250	431.250	14	6037.500	6518.750
TOWER 4	2 Bed units-L TYPE (GROUND)	630.023	566.263	1	566.263	566.263
	2 Bed units-L TYPE (TYPICAL)	541.745	541.745	14	7584.430	8145.693
TOWER 5	2 Bed units (GROUND)	510.677	451.037	1	451.037	451.037
	2 Bed units (TYPICAL)	432.031	432.031	15	6480.465	6931.502
TOWER 6	2 Bed units (GROUND)	512.723	459.083	1	459.083	459.083
	2 Bed units (TYPICAL)	434.327	434.327	17	7383.559	7842.642
TOWER 7	2 Bed units (GROUND)	513.102	459.461	1	459.461	459.461
	2 Bed units (TYPICAL)	434.684	434.684	17	7389.828	7849.289
TOWER 8	2 Bed units (GROUND)	513.102	459.461	1	459.461	459.461
	2 Bed units (TYPICAL)	434.684	434.684	17	7389.828	7849.289
TOWER 9	2 Bed units (GROUND)	510.677	451.037	1	451.037	451.037
	2 Bed units (TYPICAL)	432.031	432.031	15	6480.465	6931.502
TOWER 10	2 Bed units-L TYPE (GROUND)	620.023	556.263	1	556.263	556.263
	2 Bed units-L TYPE (TYPICAL)	543.745	543.745	14	7612.430	8168.693
TOWER 11	1 Bed units (GROUND)	389.796	319.250	1	319.250	319.250
	1 Bed units (TYPICAL)	294.814	294.814	13	3832.582	4151.832
TOWER 12	2 Bed units (GROUND)	510.558	450.918	1	450.918	450.918
	2 Bed units (TYPICAL)	432.482	432.482	14	6054.748	6505.666
TOWER 13	2 Bed units (GROUND)	510.558	450.918	1	450.918	450.918
	2 Bed units (TYPICAL)	432.482	432.482	14	6054.748	6505.666
TOWER 14	2 Bed units (GROUND)	511.353	457.713	1	457.713	457.713
	2 Bed units (TYPICAL)	433.277	433.277	15	6499.155	6956.868
TOWER 15	2 Bed units (GROUND)	511.353	457.713	1	457.713	457.713
	2 Bed units (TYPICAL)	433.277	433.277	15	6499.155	6956.868
TOTAL GROUND COVERAGE/TOWERS		8018.391				10478.880
COMMERCIAL		1508.391				1508.391
ANGANWADI AND COMMUNITY CENTER		158.640				158.640
TOTAL GROUND COVERAGE ACHIEVED		9765.424				12145.911



POPULATION CALCULATION				
S. NO.	BUILDING TYPE	UNIT TYPE USED	NO. OF UNITS PER FLOOR	NO. OF FLOORS
1	TOWER 1	2 BED L TYPE	10	13
2	TOWER 2	2 BED L TYPE	10	13
3	TOWER 3	2 BED LARGE	8	15
4	TOWER 4	2 BED L TYPE	10	15
5	TOWER 5	2 BED	8	16
6	TOWER 6	2 BED	8	16
7	TOWER 7	2 BED	8	16
8	TOWER 8	2 BED	8	16
9	TOWER 9	2 BED	8	16
10	TOWER 10	2 BED L TYPE	10	15
11	TOWER 11	1 BED	8	14
12	TOWER 12	2 BED	8	16
13	TOWER 13	2 BED	8	16
14	TOWER 14	2 BED	8	16
15	TOWER 15	2 BED	8	16
TOTAL				1976

AREA STATEMENT				
Site Area	Acres/No.	48967.01	SQMT.	52180.85
Site Area under 24mt Road		7651.28	SQMT.	82363.78
Net Planned Site Area		41315.22	SQMT.	44417.07
Site Area for commercial @ 4% of Planned Area	0.484	1958.68	SQMT.	21083.23
Balance Site Area for Apartments	11.616	47008.33	SQMT.	50599.62
FAR allowed for Apartments @ 7.25		105768.73	SQMT.	113849.64
Ground coverage Allowed @ 50%		24483.50	SQMT.	261540.43
Carpet area allowed 28 zone 40sqmt		850-900	PPA	
Min No. of Units allowed @ 5 persons/appt		1974.72	NO.	
No. of apartments achieved (2 find large)		120.00	NO.	
No. of apartments achieved (1 find)		112.00	NO.	
No. of apartments achieved (2 find)		1744.00	NO.	
Commercial FAR @ 7.25 of 4% planned site		24483.50	SQMT.	261540.43
Reqd. Area for community building		185.81	SQMT.	200.06
Reqd. Area for Anganwadi building		185.81	SQMT.	200.06
FAR allowed for Apartments		105768.73	SQMT.	113849.64
FAR achieved for Apartments		105768.68	SQMT.	113849.07
No. of Units Achieved		1976	NO.	
Car Parking Nos. required @ 0.5 ECS/APPT.		988.00	SQMT.	
Car Parking Nos. Achieved		1093.00	SQMT.	
Organised Open Spaces required @ 15% of net planned Site Area		7345.05	SQMT.	79192.128
Organised Open Spaces Provided		10277.35	SQMT.	

Handwritten notes and signatures in the top right corner of the drawing.



OWNER'S SIGN  
For Revival Realty Pvt. Ltd.  
ARCHITECT'S SIGN  
divyaanah  
102 B-11, Sector-14, Gurgaon  
divyaanah@gmail.com  
CONSULTING STRUCTURAL ENGINEER

CONSULTING MEP  
CONSULTING LANDSCAPE  
PROJECT MANAGER  
PROJECT  
PROPOSED BUILDING PLAN OF AFFORDABLE GROUP HOUSING SCHEME, MEASURING 17204.88 SQM IN AGRES. LICENSE NO. 143 OF 2014 DATED 13.06.2014 AND LICENSE NO. 164 OF 2014 DATED 14.06.2014 IN SECTOR 14, PH-8, GURGAON HANSEAN URBAN COMPLEX BEING DEVELOPED BY REVIVAL REALTY PVT. LTD. AND OTHERS.

Drawing Title  
**SITE PLAN**  
Drawing No.  
AGH-SP-00-WD  
Scale  
1:500  
Date  
05-11-2014