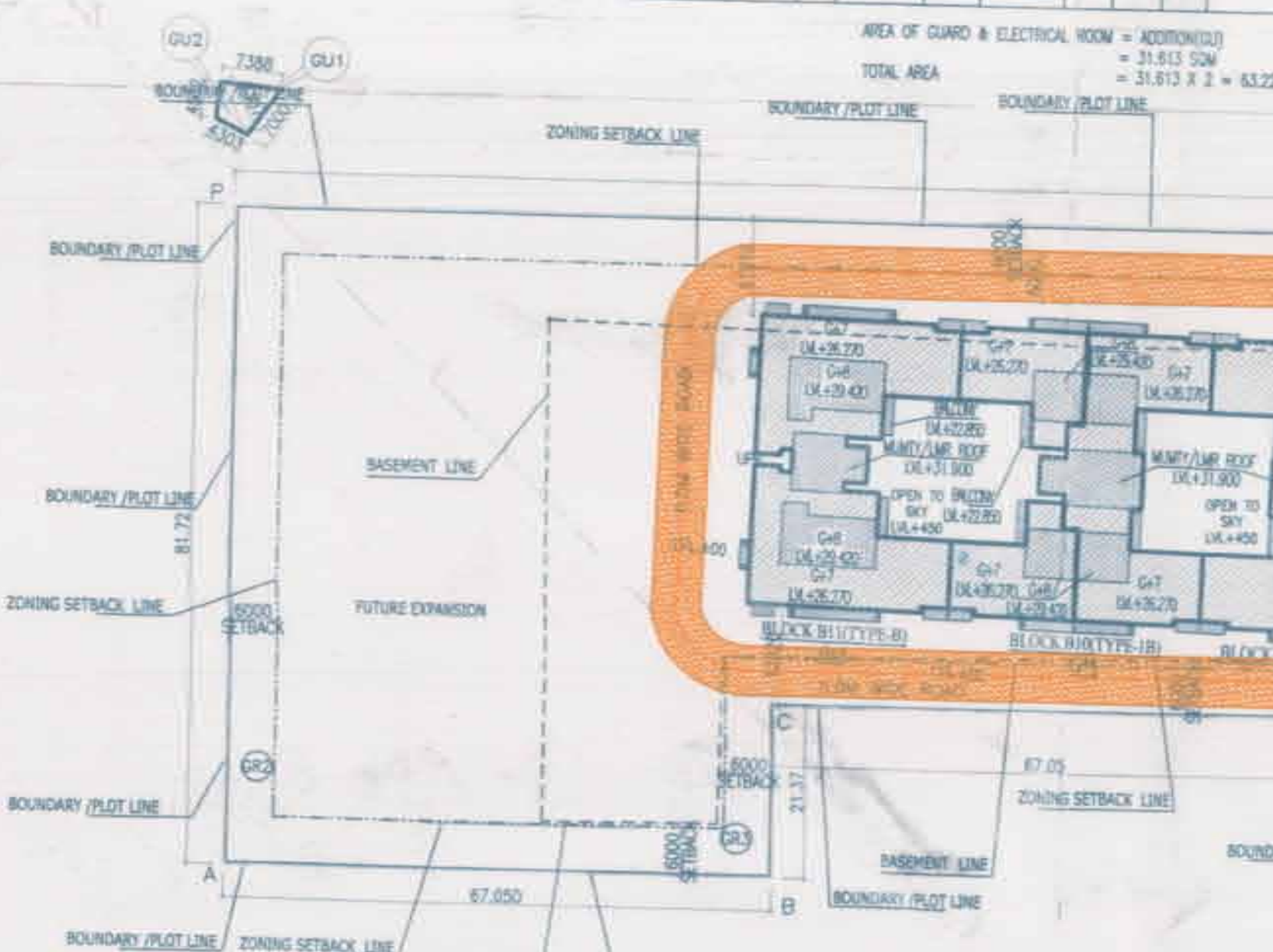
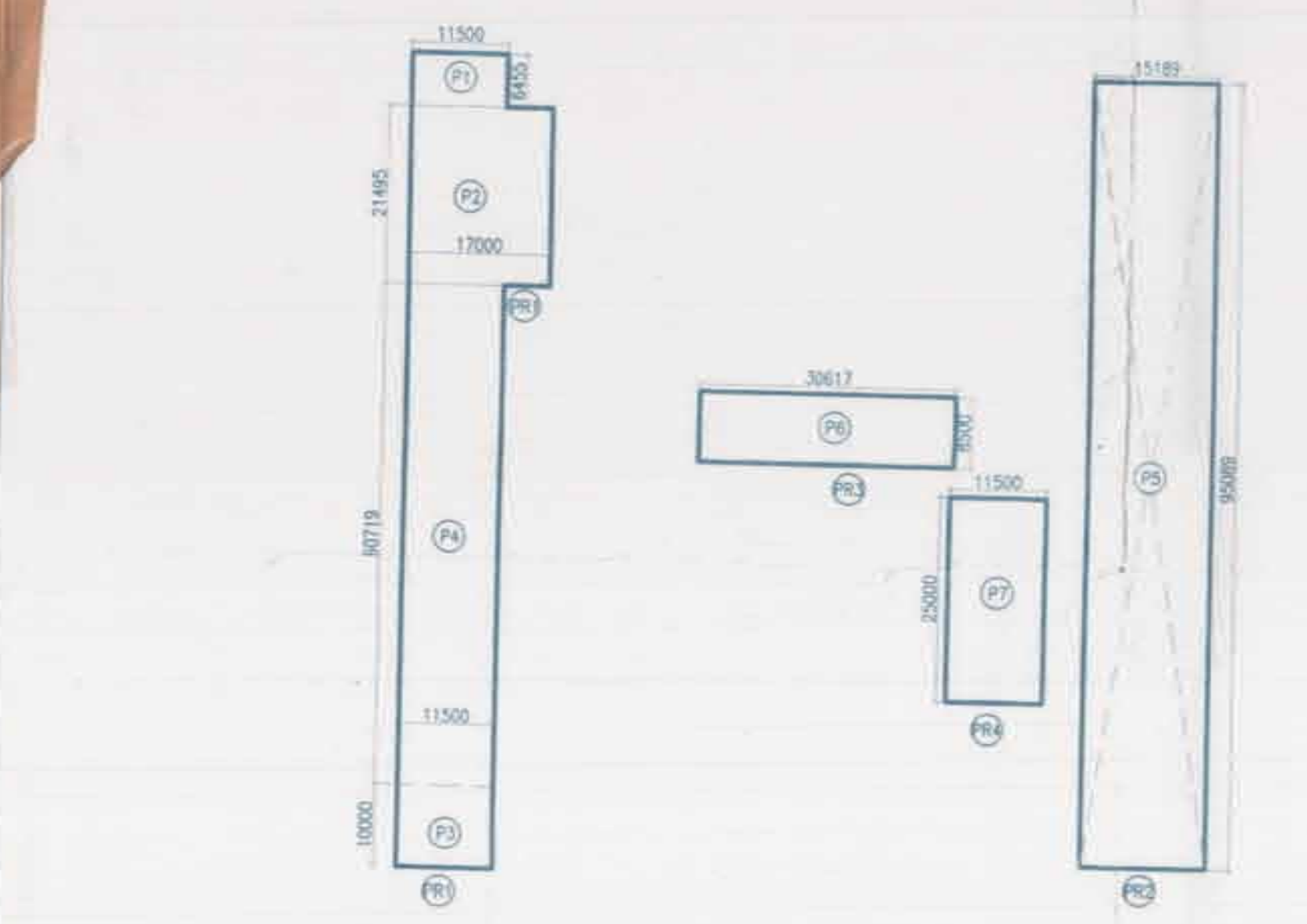


ADDITION - NS (NURSERY SCHOOL)							
NS1	=	36.060	X	19.750	=	712.185	Sqm.
NS2	=	11.698	X	8.385	=	98.071	Sqm.
		TOTAL	=		=	810.256	Sqm.

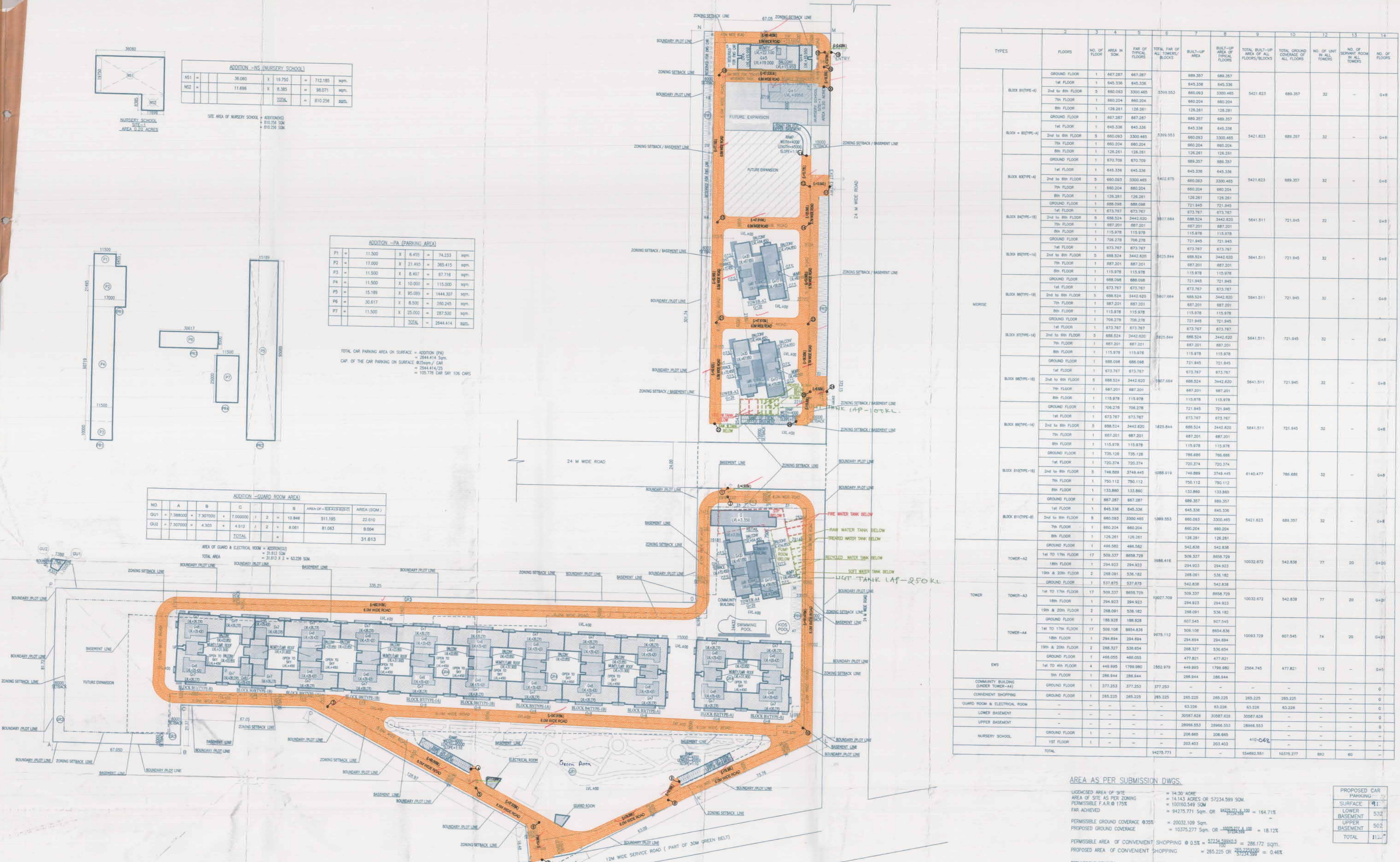
ADDITION - PA (PARKING AREA)							
P1	=	11.500	X	6.400	=	74.233	Sqm.
P2	=	11.000	X	21.400	=	235.415	Sqm.
P3	=	11.500	X	8.400	=	97.118	Sqm.
P4	=	11.500	X	10.000	=	115.000	Sqm.
P5	=	15.189	X	85.000	=	1281.307	Sqm.
P6	=	30.817	X	8.500	=	262.245	Sqm.
P7	=	11.500	X	25.000	=	287.500	Sqm.
		TOTAL	=		=	2644.414	Sqm.

ADDITION - GUARD ROOM AREA								
NO	A	B	C	D	AREA OF RECTANGLE	AREA (SQ.M)		
G01	=	7.388000	+ 7.387000	+ 7.000000	/ 2	=	10.848	311.185
G02	=	7.387000	+ 4.303	+ 4.913	/ 2	=	0.001	81.063
		TOTAL	=		=			31.813



Sub-Work No.	Road No.	Road width(m)	Road Length(m)	Area(sq.m)
1	1-2	6.000	4.500	27.000
2	2-3	6.000	482.500	2895.000
3	3-4	8.500	98.055	748.468
4	4-5	5.530	11.030	60.986
5	5-6	8.500	37.535	319.048
6	6-7	11.916	19.365	230.992
7	6-8	8.000	76.095	466.970
8	8-9	5.166	10.995	56.800
9	8-10	6.000	79.365	476.190
10	10-3	6.000	247.815	1486.890
11	10-2	6.000	161.475	968.850
12	11-12	11.777	10.640	125.307
13	12-13	4.800	15.375	73.800
14	12-14	9.700	20.565	199.481
15	14-15	6.000	47.610	285.660
16	15-16	6.000	77.150	462.900
17	16-17	8.000	80.400	643.200
18	16-19	6.000	67.535	405.210
19	19-20	6.460	10.300	66.538
20	19-17	6.460	7.675	49.581
21	17-18	6.000	3.425	20.550
22	17-16	6.000	80.400	482.400
23	15-21	6.000	62.800	377.400
24	21-22	6.000	50.920	305.520
25	21-23	6.000	47.610	285.660
26	23-14	9.700	62.900	513.130
27	23-25	9.700	36.000	349.200
28	25-24	15.958	6.800	108.500
29	25-26	6.995	19.956	139.156
			1988.850	12370.255
Total Road Length (Metre)			1698.85	
Total Road Area			12370.25	Sq.m
Add 5% for curves			618.513	Sq.m
Total Road Area			12988.768	Sq.m

TOTAL CAR PARKING AREA ON SURFACE = ADDITION (PA)
CAP. OF THE CAR PARKING ON SURFACE @ 25sqm / CAR
= 2644.414/25
= 105.776 CAR SAY 106 CARS



TYPES	FLOORS	NO. OF FLOOR	AREA IN SQ.M	FAR OF TOTAL	TOTAL FAR OF ALL TOWER/BLOCKS	BUILD-UP AREA	BUILD-UP AREA OF ALL FLOORS	TOTAL BUILD-UP AREA OF ALL FLOORS/BLOCKS	TOTAL GROUND COVERAGE OF ALL FLOORS	NO. OF UNIT IN ALL TOWERS	NO. OF SERVANT ROOM IN ALL TOWERS	NO. OF FLOORS
BLOCK B1(TYPE-I)	GROUND FLOOR	1	667.287	667.287	5239.353	667.287	667.287	5421.823	689.257	32	-	0+8
	1st FLOOR	1	645.336	645.336		645.336	645.336					
	2nd to 6th FLOOR	5	660.093	3300.465		660.093	3300.465					
	7th FLOOR	1	660.204	660.204		660.204	660.204					
BLOCK B2(TYPE-I)	GROUND FLOOR	1	667.287	667.287	5239.353	667.287	667.287	5421.823	689.257	32	-	0+8
	1st FLOOR	1	645.336	645.336		645.336	645.336					
	2nd to 6th FLOOR	5	660.093	3300.465		660.093	3300.465					
	7th FLOOR	1	660.204	660.204		660.204	660.204					
BLOCK B3(TYPE-I)	GROUND FLOOR	1	667.287	667.287	5239.353	667.287	667.287	5421.823	689.257	32	-	0+8
	1st FLOOR	1	645.336	645.336		645.336	645.336					
	2nd to 6th FLOOR	5	660.093	3300.465		660.093	3300.465					
	7th FLOOR	1	660.204	660.204		660.204	660.204					
BLOCK B4(TYPE-I)	GROUND FLOOR	1	667.287	667.287	5239.353	667.287	667.287	5421.823	689.257	32	-	0+8
	1st FLOOR	1	645.336	645.336		645.336	645.336					
	2nd to 6th FLOOR	5	660.093	3300.465		660.093	3300.465					
	7th FLOOR	1	660.204	660.204		660.204	660.204					
BLOCK B5(TYPE-I)	GROUND FLOOR	1	667.287	667.287	5239.353	667.287	667.287	5421.823	689.257	32	-	0+8
	1st FLOOR	1	645.336	645.336		645.336	645.336					
	2nd to 6th FLOOR	5	660.093	3300.465		660.093	3300.465					
	7th FLOOR	1	660.204	660.204		660.204	660.204					
BLOCK B6(TYPE-I)	GROUND FLOOR	1	667.287	667.287	5239.353	667.287	667.287	5421.823	689.257	32	-	0+8
	1st FLOOR	1	645.336	645.336		645.336	645.336					
	2nd to 6th FLOOR	5	660.093	3300.465		660.093	3300.465					
	7th FLOOR	1	660.204	660.204		660.204	660.204					
BLOCK B7(TYPE-I)	GROUND FLOOR	1	667.287	667.287	5239.353	667.287	667.287	5421.823	689.257	32	-	0+8
	1st FLOOR	1	645.336	645.336		645.336	645.336					
	2nd to 6th FLOOR	5	660.093	3300.465		660.093	3300.465					
	7th FLOOR	1	660.204	660.204		660.204	660.204					
BLOCK B8(TYPE-I)	GROUND FLOOR	1	667.287	667.287	5239.353	667.287	667.287	5421.823	689.257	32	-	0+8
	1st FLOOR	1	645.336	645.336		645.336	645.336					
	2nd to 6th FLOOR	5	660.093	3300.465		660.093	3300.465					
	7th FLOOR	1	660.204	660.204		660.204	660.204					
BLOCK B9(TYPE-I)	GROUND FLOOR	1	667.287	667.287	5239.353	667.287	667.287	5421.823	689.257	32	-	0+8
	1st FLOOR	1	645.336	645.336		645.336	645.336					
	2nd to 6th FLOOR	5	660.093	3300.465		660.093	3300.465					
	7th FLOOR	1	660.204	660.204		660.204	660.204					
BLOCK B10(TYPE-I)	GROUND FLOOR	1	667.287	667.287	5239.353	667.287	667.287	5421.823	689.257	32	-	0+8
	1st FLOOR	1	645.336	645.336		645.336	645.336					
	2nd to 6th FLOOR	5	660.093	3300.465		660.093	3300.465					
	7th FLOOR	1	660.204	660.204		660.204	660.204					
BLOCK B11(TYPE-I)	GROUND FLOOR	1	667.287	667.287	5239.353	667.287	667.287	5421.823	689.257	32	-	0+8
	1st FLOOR	1	645.336	645.336		645.336	645.336					
	2nd to 6th FLOOR	5	660.093	3300.465		660.093	3300.465					
	7th FLOOR	1	660.204	660.204		660.204	660.204					
BLOCK B12(TYPE-I)	GROUND FLOOR	1	667.287	667.287	5239.353	667.287	667.287	5421.823	689.257	32	-	0+8
	1st FLOOR	1	645.336	645.336		645.336	645.336					
	2nd to 6th FLOOR	5	660.093	3300.465		660.093	3300.465					
	7th FLOOR	1	660.204	660.204		660.204	660.204					
BLOCK B13(TYPE-I)	GROUND FLOOR	1	667.287	667.287	5239.353	667.287	667.287	5421.823	689.257	32	-	0+8
	1st FLOOR	1	645.336	645.336		645.336	645.336					
	2nd to 6th FLOOR	5	660.093	3300.465		660.093	3300.465					
	7th FLOOR	1	660.204	660.204		660.204	660.204					
BLOCK B14(TYPE-I)	GROUND FLOOR	1	667.287	667.287	5239.353	667.287	667.287	5421.823	689.257	32	-	0+8
	1st FLOOR	1	645.336	645.336		645.336	645.336					
	2nd to 6th FLOOR	5	660.093	3300.465		660.093	3300.465					
	7th FLOOR	1	660.204	660.204		660.204	660.204					
BLOCK B15(TYPE-I)	GROUND FLOOR	1	667.287	667.287	5239.353	667.287	667.287	5421.823	689.257	32	-	0+8
	1st FLOOR	1	645.336	645.336		645.336	645.336					
	2nd to 6th FLOOR	5	660.093	3300.465		660.093	3300.465					
	7th FLOOR	1	660.204	660.204		660.204	660.204					
BLOCK B16(TYPE-I)	GROUND FLOOR	1	667.287	667.287	5239.353	667.287	667.287	5421.823	689.257	32	-	0+8
	1st FLOOR	1	645.336	645.336		645.336	645.336					
	2nd to 6th FLOOR	5	660.093	3300.465		660.093	3300.465					
	7th FLOOR	1	660.204	660.204		660.204	660.204					
BLOCK B17(TYPE-I)	GROUND FLOOR	1	667.287	667.287	5239.353	667.287	667.287	5421.823	689.257	32	-	0+8
	1st FLOOR	1	645.336	645.336		645.336	645.336					
	2nd to 6th FLOOR	5	660.093	3300.465		660.093	3300.465					
	7th FLOOR	1	660.204	660.204		660.204	660.204					
BLOCK B18(TYPE-I)	GROUND FLOOR	1	667.287	667.287	5239.353	667.287	667.287	5421.823	689.257	32	-	0+8
	1st FLOOR	1	645.336	645.336		645.336	645.336					
	2nd to 6th FLOOR	5	660.093	3300.465		660.093	3300.465					
	7th FLOOR	1	660.204	660.204		660.204	660.204					
BLOCK B19(TYPE-I)	GROUND FLOOR	1	667.287	667.287	5239.353	667.287	667.287	5421.823	689.257	32	-	0+8
	1st FLOOR	1	645.336	645.336		645.336	645.336					
	2nd to 6th FLOOR	5	660.093	3300.465		660.093	3300.465					
	7th FLOOR	1	660.204	660.204		660.204	660.204					
BLOCK B20(TYPE-I)	GROUND FLOOR	1	667.287	667.287	5239.353	667.287	667.287	5421.823	689.257	32	-	0+8
	1st FLOOR	1	645.336	645.336		645.336	645.336					
	2nd to 6th FLOOR	5	660.093	3300.465		660.093	3300.465					
	7th FLOOR	1	660.204	660.204		660.204	660.204					
BLOCK B21(TYPE-I)	GROUND FLOOR	1	667.287	667.287	5239.353	667.287	667.287	5421.823	689.257	32	-	0+8
	1st FLOOR	1	645.336	645.336		645.336	645.336					
	2nd to 6th FLOOR	5	660.093	3300.465		660.093	3300.465					
	7th FLOOR	1	660.204	660.204		660.204	660.204					
BLOCK B22(TYPE-I)	GROUND FLOOR	1	667.287	667.287	5239.353	667.287	667.287	54				

