

ALREADY SANCTIONED

PROPOSED CARS PARKING	256
STILL SURFACE	431
UPPER BASEMENT (PART-1)	438
UPPER BASEMENT (PART-2)	1184
TOTAL	

NO.	AREA	AREA (SQ. M)	NO. OF CARS	AREA (SQ. M)	NO. OF CARS	AREA (SQ. M)	NO. OF CARS
1	ALREADY SANCTIONED	150.00	150				
2	STILL SURFACE	280.00	280				
3	UPPER BASEMENT (PART-1)	280.00	280				
4	UPPER BASEMENT (PART-2)	834.00	834				
5	TOTAL	1444.00	1444				

NO.	AREA	AREA (SQ. M)	NO. OF CARS	AREA (SQ. M)	NO. OF CARS	AREA (SQ. M)	NO. OF CARS
1	ALREADY SANCTIONED	150.00	150				
2	STILL SURFACE	280.00	280				
3	UPPER BASEMENT (PART-1)	280.00	280				
4	UPPER BASEMENT (PART-2)	834.00	834				
5	TOTAL	1444.00	1444				

NO.	AREA	AREA (SQ. M)	NO. OF CARS	AREA (SQ. M)	NO. OF CARS	AREA (SQ. M)	NO. OF CARS
1	ALREADY SANCTIONED	150.00	150				
2	STILL SURFACE	280.00	280				
3	UPPER BASEMENT (PART-1)	280.00	280				
4	UPPER BASEMENT (PART-2)	834.00	834				
5	TOTAL	1444.00	1444				

1. BUILDINGS SHALL BE DESIGNED TO SATISFY THE REQUIREMENTS OF THE LOCAL AUTHORITY FOR THE PROPOSED DEVELOPMENT.

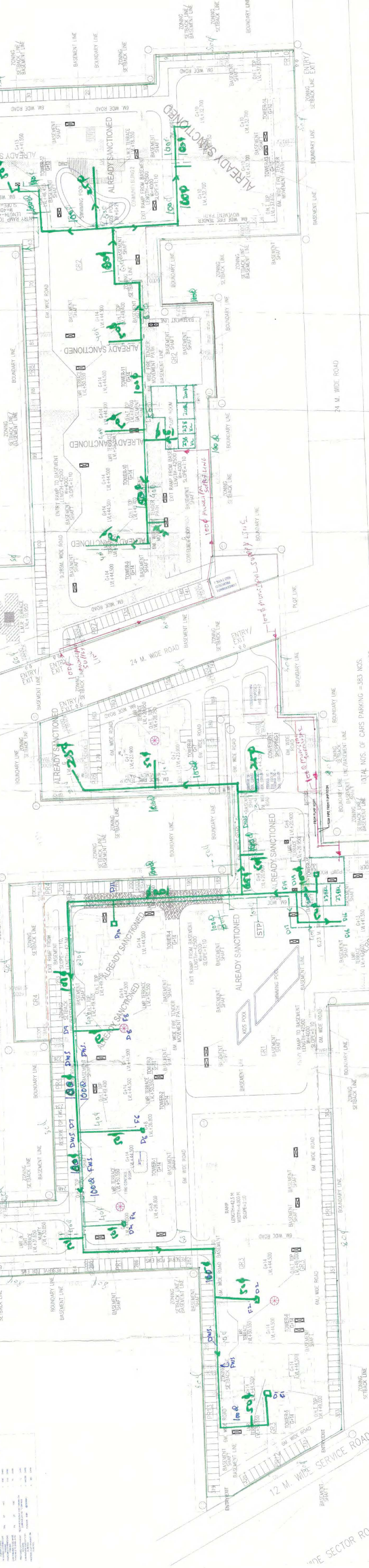
2. THE PROPOSED DEVELOPMENT SHALL BE SPREAD OVER A MINIMUM OF TWO STOREYS.

3. THE BUILDINGS SHALL BE LIGHTED NORMALLY PROVIDED.

4. THE BUILDINGS SHALL BE PROTECTED BY AN APPROPRIATE FIRE FIGHTING SYSTEM.

5. THE BUILDINGS SHALL BE PROTECTED BY AN APPROPRIATE FIRE FIGHTING SYSTEM.

6. THE BUILDINGS SHALL BE PROTECTED BY AN APPROPRIATE FIRE FIGHTING SYSTEM.



ADVANCE TYPE LIGHTNING ARRESTER (with lightning bolt symbol)

79.0 METER RADIUS

DOMESTICS SUPPLY (with green line symbol)

DISCRETIONARY WATER SUPPLY (with blue line symbol)

DISCRETIONARY SEWER SUPPLY (with red line symbol)

DISCRETIONARY GAS SUPPLY (with black line symbol)

PROPOSED CARS PARKING	STILL SURFACE	UPPER BASEMENT (PART-1)	UPPER BASEMENT (PART-2)	TOTAL
22 ALREADY SANCTIONED-4	14	363	661	1048
PROPOSED -12 DUCT IN EWS STILL			436	436
(ALREADY SANCTIONED)				1484

RSP PROJECT CONSULTANTS

For: Design services for the site plan.

RSP PROJECT CONSULTANTS

10/25, 10th Floor, The Grand Park Hotel, 25th Floor, 10/25, 10th Floor, The Grand Park Hotel, 25th Floor, 10/25, 10th Floor, The Grand Park Hotel, 25th Floor.

RSP PROJECT CONSULTANTS

10/25, 10th Floor, The Grand Park Hotel, 25th Floor, 10/25, 10th Floor, The Grand Park Hotel, 25th Floor, 10/25, 10th Floor, The Grand Park Hotel, 25th Floor.

RISMS ASSOCIATE ARCHITECTS

RSMS ARCHITECTS PVT. LTD.

25th Floor, 10/25, 10th Floor, The Grand Park Hotel, 25th Floor, 10/25, 10th Floor, The Grand Park Hotel, 25th Floor, 10/25, 10th Floor, The Grand Park Hotel, 25th Floor.

PROFESSIONAL ENGINEERS

ADV. CIVIL ENGINEERS

10/25, 10th Floor, The Grand Park Hotel, 25th Floor, 10/25, 10th Floor, The Grand Park Hotel, 25th Floor, 10/25, 10th Floor, The Grand Park Hotel, 25th Floor.

FOR SERVICE PLAN ESTIMATE

NO.	DESCRIPTION	AMOUNT	TOTAL
1			
2			
3			
4			
5			
6			
7			
8			
9			
10			
11			
12			
13			
14			
15			
16			
17			
18			
19			
20			
21			
22			
23			
24			
25			
26			
27			
28			
29			
30			

PROJECT CONSULTANTS

FOR SERVICE PLAN ESTIMATE

10/25, 10th Floor, The Grand Park Hotel, 25th Floor, 10/25, 10th Floor, The Grand Park Hotel, 25th Floor, 10/25, 10th Floor, The Grand Park Hotel, 25th Floor.

PROFESSIONAL ENGINEER

ADD. CHIEF ENGINEER

HUDA Gungahur

10/25, 10th Floor, The Grand Park Hotel, 25th Floor, 10/25, 10th Floor, The Grand Park Hotel, 25th Floor, 10/25, 10th Floor, The Grand Park Hotel, 25th Floor.

PROFESSIONAL ENGINEER

ADD. CHIEF ENGINEER

HUDA Gungahur

10/25, 10th Floor, The Grand Park Hotel, 25th Floor, 10/25, 10th Floor, The Grand Park Hotel, 25th Floor, 10/25, 10th Floor, The Grand Park Hotel, 25th Floor.

PROFESSIONAL ENGINEER

ADD. CHIEF ENGINEER

HUDA Gungahur

10/25, 10th Floor, The Grand Park Hotel, 25th Floor, 10/25, 10th Floor, The Grand Park Hotel, 25th Floor, 10/25, 10th Floor, The Grand Park Hotel, 25th Floor.

PROFESSIONAL ENGINEER

ADD. CHIEF ENGINEER

HUDA Gungahur

10/25, 10th Floor, The Grand Park Hotel, 25th Floor, 10/25, 10th Floor, The Grand Park Hotel, 25th Floor, 10/25, 10th Floor, The Grand Park Hotel, 25th Floor.

PROFESSIONAL ENGINEER

ADD. CHIEF ENGINEER

HUDA Gungahur

10/25, 10th Floor, The Grand Park Hotel, 25th Floor, 10/25, 10th Floor, The Grand Park Hotel, 25th Floor, 10/25, 10th Floor, The Grand Park Hotel, 25th Floor.

PROFESSIONAL ENGINEER

ADD. CHIEF ENGINEER

HUDA Gungahur

10/25, 10th Floor, The Grand Park Hotel, 25th Floor, 10/25, 10th Floor, The Grand Park Hotel, 25th Floor, 10/25, 10th Floor, The Grand Park Hotel, 25th Floor.

PROFESSIONAL ENGINEER

ADD. CHIEF ENGINEER

HUDA Gungahur

10/25, 10th Floor, The Grand Park Hotel, 25th Floor, 10/25, 10th Floor, The Grand Park Hotel, 25th Floor, 10/25, 10th Floor, The Grand Park Hotel, 25th Floor.

PROFESSIONAL ENGINEER

ADD. CHIEF ENGINEER

HUDA Gungahur

10/25, 10th Floor, The Grand Park Hotel, 25th Floor, 10/25, 10th Floor, The Grand Park Hotel, 25th Floor, 10/25, 10th Floor, The Grand Park Hotel, 25th Floor.

PROFESSIONAL ENGINEER

ADD. CHIEF ENGINEER

HUDA Gungahur

10/25, 10th Floor, The Grand Park Hotel, 25th Floor, 10/25, 10th Floor, The Grand Park Hotel, 25th Floor, 10/25, 10th Floor, The Grand Park Hotel, 25th Floor.

PROFESSIONAL ENGINEER

ADD. CHIEF ENGINEER

HUDA Gungahur

10/25, 10th Floor, The Grand Park Hotel, 25th Floor, 10/25, 10th Floor, The Grand Park Hotel, 25th Floor, 10/25, 10th Floor, The Grand Park Hotel, 25th Floor.

PROFESSIONAL ENGINEER

ADD. CHIEF ENGINEER

HUDA Gungahur

10/25, 10th Floor, The Grand Park Hotel, 25th Floor, 10/25, 10th Floor, The Grand Park Hotel, 25th Floor, 10/25, 10th Floor, The Grand Park Hotel, 25th Floor.

PROFESSIONAL ENGINEER

ADD. CHIEF ENGINEER

HUDA Gungahur

10/25, 10th Floor, The Grand Park Hotel, 25th Floor, 10/25, 10th Floor, The Grand Park Hotel, 25th Floor, 10/25, 10th Floor, The Grand Park Hotel, 25th Floor.

5/15

25
Director of
Engineering

1. BUILDING SHALL BE SANCTIONED BY THE DISTRICT AS PER PRESENT E.C.O.S.T. FOR EARTHQUAKE RESISTANCE.

2. ALL STRUCTURAL MEMBERS SHALL BE SPANNERS & SHALL BE SANCTIONED BY THE DISTRICT.

3. FOUNDATION SHALL BE SANCTIONED BY THE DISTRICT.

4. ALL STRUCTURAL MEMBERS SHALL BE SPANNERS & SHALL BE SANCTIONED BY THE DISTRICT.

PROJECT: 22 ALREADY SANCTIONED+4 PROPOSED -12 DEDUCT IN EWS STILL

PROJECT CONSULTANTS: RSP

PROJECT NO: 10077/2008/002

ASSOCIATE ARCHITECTS: RISMSIS

RISMSIS ARCHITECTS PVT. LTD.
10077/2008/002
New Delhi-110077, INDIA
www.rismsis.com

REGISTERED PROFESSIONAL ENGINEERS
FOR SERVICE PLAN ESTIMATE CITY
HARYANA, INDIA
No. 10077/2008/002

For Service Plan Estimate City
Haryana, India
No. 10077/2008/002

Table with columns: No., Area, Volume, etc.

Table with columns: No., Area, Volume, etc.

Table with columns: No., Area, Volume, etc.

Table with columns: No., Area, Volume, etc.

Table with columns: No., Area, Volume, etc.

Table with columns: No., Area, Volume, etc.

Table with columns: No., Area, Volume, etc.

Table with columns: No., Area, Volume, etc.

Table with columns: No., Area, Volume, etc.

Table with columns: No., Area, Volume, etc.

Table with columns: No., Area, Volume, etc.



PROPOSED CARS PARKING

STILT	14
SURFACE	383
UPPER BASEMENT (PART-1)	661
UPPER BASEMENT (PART-2)	436
TOTAL	1494

ADVANCE TYPE LIGHTNING ARRESTER
79.0 METER RADIUS

22 ALREADY SANCTIONED+4 PROPOSED -12 DEDUCT IN EWS STILL


TOTAL NOS. OF CARS PARKING = 1494 NOS.
TOTAL NOS. OF CARS PARKING = 1494 NOS.
TOTAL NOS. OF CARS PARKING = 1494 NOS.

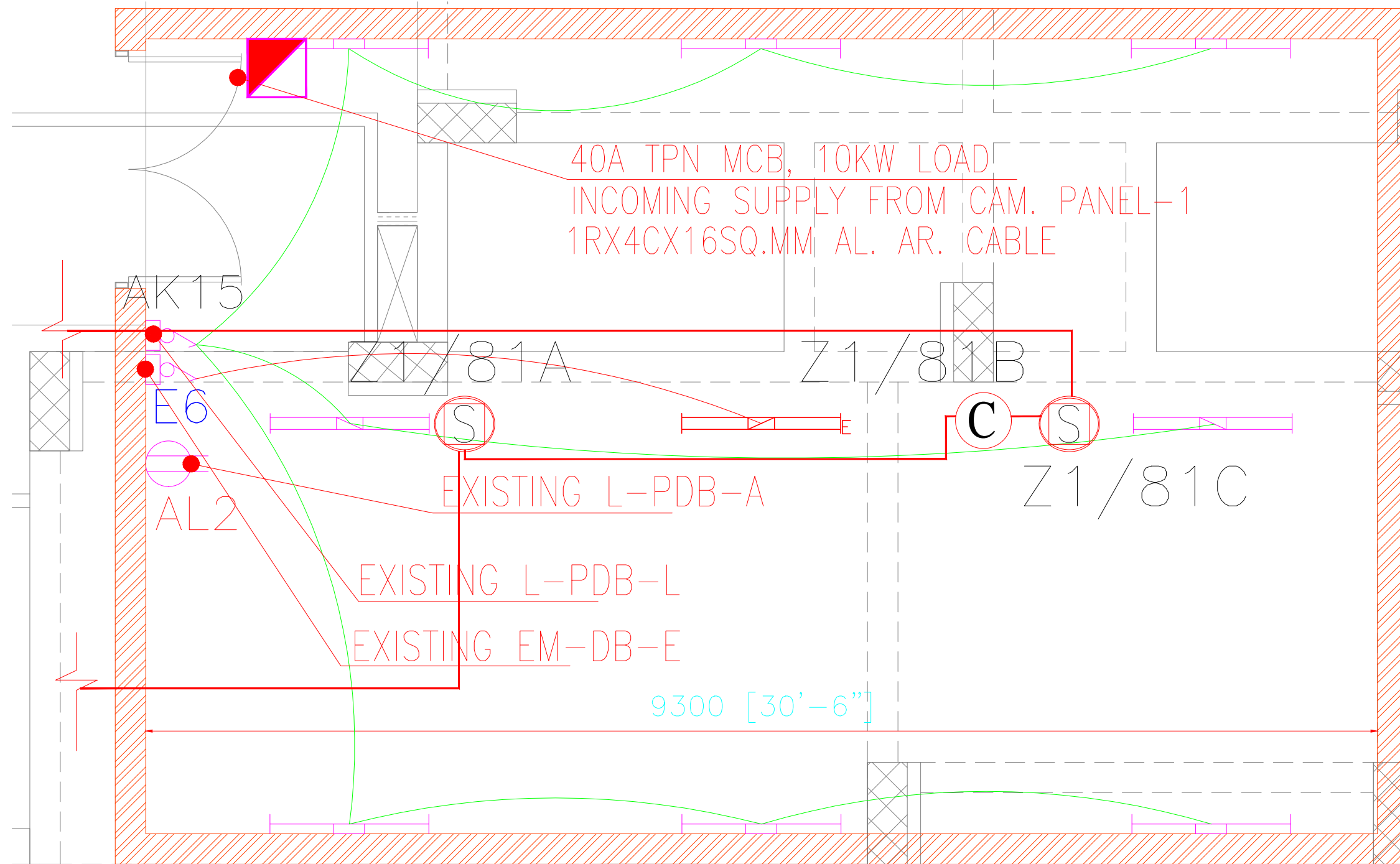
ALREADY SANCTIONED

STILT	295
SURFACE	431
UPPER BASEMENT (PART-1)	438
UPPER BASEMENT (PART-2)	1184
TOTAL	2348

Table with columns: No., Area, Volume, etc.

Table with columns: No., Area, Volume, etc.

LEGEND:-	DESCRIPTION	MT.HEIGHT (MM)
	TWO WAY SWITCH BOARD	1200 MM
	ONE WAY SWITCH BOARD	1200 MM
	1X28W CEILING MOUNTED LIGHT	ON CEILING
	1X28W CEILING MOUNTED LIGHT (EMERGENCY CONTROL)	ON CEILING
	6/16A RAW POWER SOCKET WITH SWITCH OUTLET	230 MM
	MCB BOX	1800 MM TOP



NO	DATE	DESCRIPTION	REVISION
R-1	29-04-19	REVISED AS PER CONSULTANT COMMENTS.	

DEVELOPERS :
WONDER CITY BUILDCON PVT. LTD.
 3rd Floor, Tower-A
 Plot No: 35, UM House, Sector: 44
 Gurgaon- 122002, Haryana, India
 Ph: 0124-4956150

PROJECT TITLE :
PROPOSED GROUP HOUSING, SECTOR-79 GURGAON (HR)

MEP CONSULTANT :
Design Centre Consulting Engineers Pvt.Ltd
 Office No. 44 To 47, 4th floor
 Ansal Plaza, Dabur Chowk
 Vaishali, Ghaziabad, (UP)
 Phone: 0120-4333451,4333452
 e.mail: dce_ps@yahoo.com, thakurpk1967@yahoo.com

LANDSCAPE CONSULTANT :
IPDM Services (India) Pvt. Ltd.
 B-3/22, 3rd Floor, Rajouri Garden
 New Delhi-110027
 Phone: 011-41447482/83
 FAX: 011-41447133/ Email: ipdm@ipdm.in

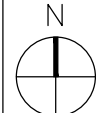
STRUCTURAL CONSULTANT :
OPTIMIZATION CONSULTANTS
 202, 203 Himland House Commercial Complex Karampura
 New Delhi-110015
 PHONE NO:(011) ---
 E-mail: optpro34@yahoo.com

DESIGN CONSULTANT :
RSP Design consultants (India) Pvt. Ltd.

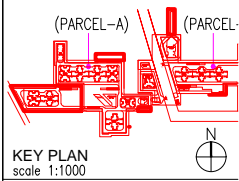
 UNIT 507, TIME TOWER, MG ROAD, GURGAON-122002 TEL: 4706868 FAX: 4706818
 HEAD OFFICE: NO.30, MUSEUM ROAD, BANGALORE - 560 001 TEL: 25596868 FAX: 25596818
 EMAIL: rsp@rspindia.net ; www.rspindia.net

HVAC GFC DRAWING

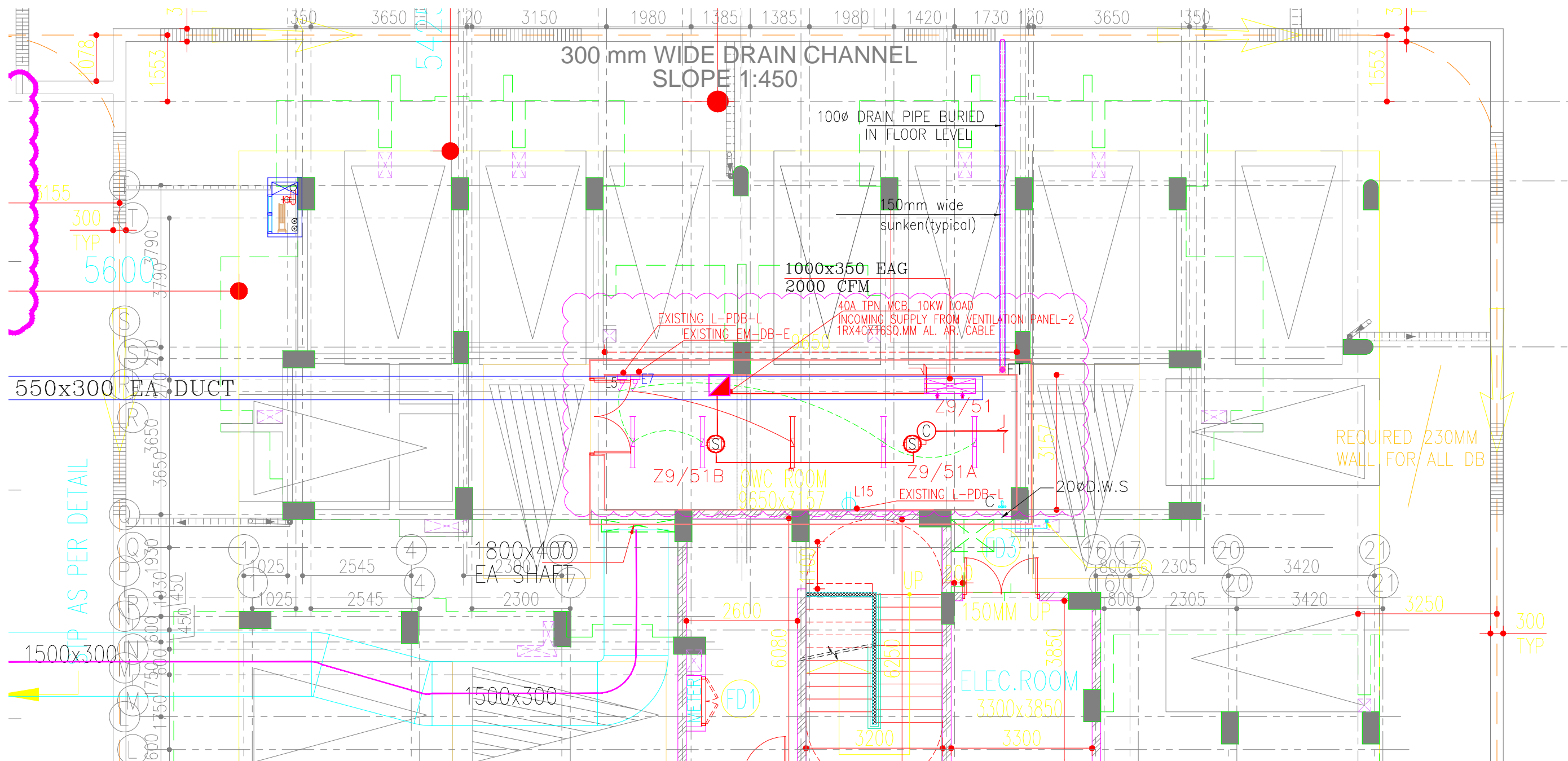
SUBJECT OF DRAWING :
**ELECTRICAL LAYOUT
 OWC ROOM BASEMENT FLOOR
 (PARCEL-A)**



SCALE : NTS (A4)	DATE : 29/04/19
DRAWN : BABLOO	CHECKED : A.K.
DRAWING NO : DCCE/839/OWC/EL/01	(PARCEL-A)



LEGEND:-	DESCRIPTION	MT.HEIGHT (MM)
	ONE WAY SWITCH BOARD	1200 MM
	1x28W FTL WALL LIGHT	2100 MM
	1x28W FTL FIXTURE LIGHT	ON CEILING
	1x28W FTL EMERGENCY FIXTURE LIGHT EMERGENCY CONTROL	ON CEILING
	6/16A RAW POWER SOCKET WITH SWITCH OUTLET	230 MM
	SMOKE DETECTOR	ON CEILING
	25MMØ MS CONDUIT FOR FIRE	



NOTE:-
 DOORS & WINDOWS TYPES ARE MENTIONED IN THE PLANS.
 FOR STRUCTURAL & FINISHED-OPENING SIZES REFER SCHEDULE OF OPENINGS. FOR DETAILED DRAWING OF DOORS & WINDOWS REFER DGS-NO A-600 SERIES
 * ALL THE SERVICE ROOMS MASONRY/DOOR OPENINGS TO BE AS PER SERVICE CONSULTANTS REQUIREMENT/DETAIL
 ** ALL THE SERVICE DUCTS SIZES/MASONRY/DOOR SIZES TO BE AS PER SERVICE CONSULTANTS REQUIREMENT/DETAIL

GENERAL NOTES:
 - ALL DIMENSIONS ARE IN MILLIMETERS
 - THIS DRAWING IS A COPYRIGHT AND PROPERTY OF THE ARCH. IS NOT TO BE PRODUCED, COPIED, HANDED OVER TO THIRD PARTY FOR ANY OTHER PURPOSE OTHER THAN FOR WHICH IT IS.
 - ALL DIMENSIONS SHALL BE VERIFIED ON SITE PRIOR TO START ANY DISCREPANCY SHALL BE BROUGHT TO THE NOTICE OF THE ARCHITECT.
 - THE CONTRACTOR MUST CHECK ALL DIMENSIONS AND DETAILS RESPONSIBLE FOR THE SAME. ANY DISCREPANCY SHALL BE BROUGHT TO THE NOTICE OF THE ARCHITECT.
 - THIS DRAWING IS TO BE READ AND NOT SCALED.

R1	1.MEP INPUT INCORPORATED. 2.EXPANSION JOINT SHIFTED FROM GRID 94 TO GRID 97.	17.02.17	
NO	DESCRIPTION	REVISION	DATE

DEVELOPERS :
 WONDER CITY BUILDCON PVT. LTD.
 3rd Floor, Tower-A
 Plot No: 35, UIM House, Sector: 44
 Gurgaon- 122002, Haryana, India
 Ph: 0124-4956150

PROJECT TITLE :
 GODREJ ARIA, SECTOR-79
 GURGAON (HR)

MECHANICAL & ELECTRICAL CONSULTANT :
 Design Centre Consulting Engineers Pvt.Ltd
 Office No. 44 To 47, 4th floor
 Ansal Plaza, Dabur Chowk
 Vasant, Ghaziabad, (UP)
 Phone: 0120-4133462/41333452
 e-mail: dccce_psy@yahoo.com, thokurpl1967@yahoo.com

LANDSCAPE CONSULTANT :
 IPDM Services (India) Pvt. Ltd
 B-3/22, 3rd Floor, Rajouri Garden
 New Delhi-110027
 Phone: 011-41447462/63
 Fax: 011-41447133/ Email: ipdm@ipdm.com

STRUCTURAL CONSULTANT :
 OPTIMIZATION CONSULTANTS
 202, 203 Herland House Commercial Complex
 New Delhi-110015
 PHONE: 011-41447462/63
 E-mail: opls@optimization.com

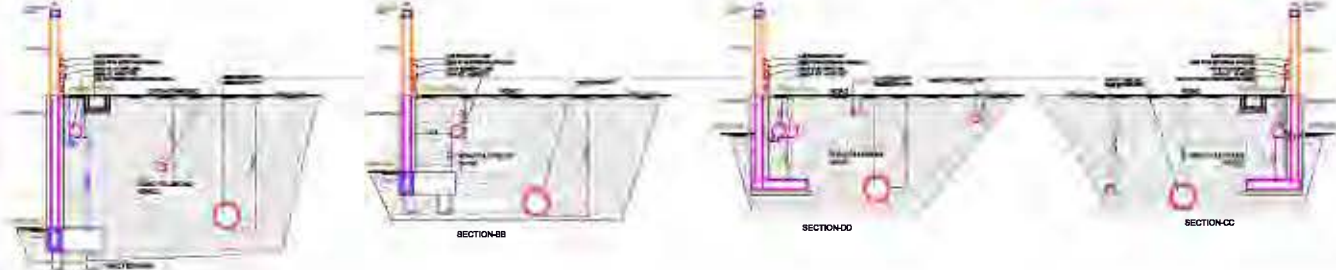
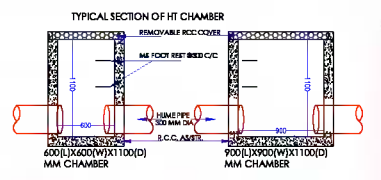
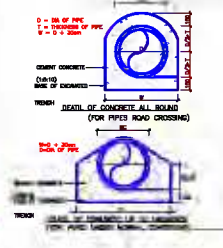
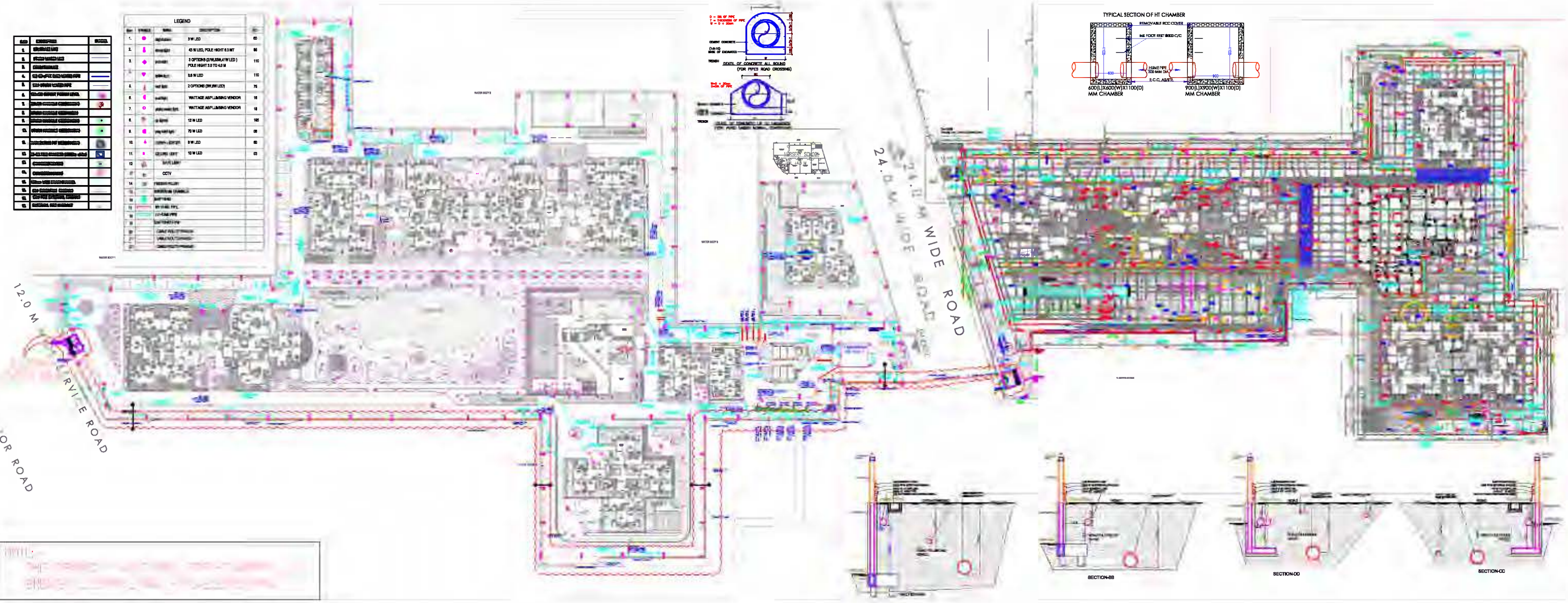
DESIGN CONSULTANT :
 RSP Design consultants (India) Pvt. Ltd.
 103, First Floor, Batach Business Tower, Sector: 48, Sohna Road
 Gurgaon: 122018, India TEL: 470688 FAX: 470618
 HEAD OFFICE: 20/30, MUSEUM ROAD, BANGALORE-560 001 TEL:25598868 F: 25598868
 E-MAIL: rsp@rspindia.net ; www.rspindia.net

CONSTRUCTION DRAW
 SUBJECT OF DRAWING :
 MEP LAYOUT
 OWC ROOM
 BASEMENT FLOOR
 (PARCEL-B)

FILE NAME :	DATE :	09/02/19
SCALE : 1:50	CHECKED :	AJAY
DRAWN : RAVI	CHECKED :	AJAY
DRAWING NO : DCCCE/839/GFC/MEP/02A	OWC (PARCEL-B)	

NO.	DESCRIPTION	SYMBOL
1	CONCRETE	
2	STEEL	
3	GLASS	
4	WOOD	
5	PAINT	
6	MECHANICAL	
7	ELECTRICAL	
8	PLUMBING	
9	TELECOMMUNICATIONS	
10	LANDSCAPE	
11	ENVIRONMENTAL	
12	HAZARDOUS WASTE	
13	NON-HAZARDOUS WASTE	
14	WATER	
15	SEWER	
16	VENTILATION	
17	EXHAUST	
18	REFRIGERATION	
19	HEATING	
20	COOLING	
21	WATER SUPPLY	
22	SEWERAGE	
23	VENTILATION	
24	EXHAUST	
25	REFRIGERATION	
26	HEATING	
27	COOLING	
28	WATER SUPPLY	
29	SEWERAGE	
30	VENTILATION	
31	EXHAUST	
32	REFRIGERATION	
33	HEATING	
34	COOLING	
35	WATER SUPPLY	
36	SEWERAGE	
37	VENTILATION	
38	EXHAUST	
39	REFRIGERATION	
40	HEATING	
41	COOLING	
42	WATER SUPPLY	
43	SEWERAGE	
44	VENTILATION	
45	EXHAUST	
46	REFRIGERATION	
47	HEATING	
48	COOLING	
49	WATER SUPPLY	
50	SEWERAGE	

NO.	SYMBOL	DESCRIPTION	HEIGHT
1	1	3 W LED	40
2	2	40 W LED, POLE HEIGHT 8.5 MT	85
3	3	1 OPTION (2 W/3 W/4 W LED) POLE HEIGHT 8.5 TO 4.5 M	110
4	4	55 W LED	110
5	5	65 W LED	75
6	6	2 OPTION (2 W/3 W/4 W LED)	75
7	7	WATTAGE ADJUSTING VENDOR	15
8	8	WATTAGE ADJUSTING VENDOR	15
9	9	12 W LED	180
10	10	75 W LED	20
11	11	8 W LED	65
12	12	15 W LED	12
13	13	SUN LIGHT	
14	14	CCTV	
15	15	PERIMETER LIGHTING	
16	16	WATER TOWER	
17	17	WATER TOWER	
18	18	WATER TOWER	
19	19	WATER TOWER	
20	20	WATER TOWER	
21	21	WATER TOWER	
22	22	WATER TOWER	
23	23	WATER TOWER	
24	24	WATER TOWER	
25	25	WATER TOWER	
26	26	WATER TOWER	
27	27	WATER TOWER	
28	28	WATER TOWER	
29	29	WATER TOWER	
30	30	WATER TOWER	



NO.	DESCRIPTION	DATE
1	ISSUED FOR TENDER	15/05/2024
2	ISSUED FOR CONTRACT	20/05/2024
3	ISSUED FOR CONSTRUCTION	25/05/2024
4	ISSUED FOR AS-BUILT	30/05/2024
5	ISSUED FOR ARCHIVE	05/06/2024

1000

18
 Director
 Town & Country Planning
 Haringey Council
 Haringey, London
 N9 9UH

NOTE:
 1. ALL WORK SHALL BE IN ACCORDANCE WITH THE LATEST EDITIONS OF THE BUILDING REGULATIONS AND THE LATEST EDITIONS OF THE LONDON BUILDING ACT 1947.
 2. THE DRAWINGS SHALL BE PRINTED ON A4 PAPER.
 3. THE DRAWINGS SHALL BE PRINTED ON A4 PAPER.
 4. THE DRAWINGS SHALL BE PRINTED ON A4 PAPER.
 5. THE DRAWINGS SHALL BE PRINTED ON A4 PAPER.

NO.	DESCRIPTION	DATE
1		
2		
3		
4		
5		
6		
7		
8		
9		
10		
11		
12		
13		
14		
15		
16		
17		
18		
19		
20		
21		
22		
23		
24		
25		
26		
27		
28		
29		
30		
31		
32		
33		
34		
35		
36		
37		
38		
39		
40		
41		
42		
43		
44		
45		
46		
47		
48		
49		
50		
51		
52		
53		
54		
55		
56		
57		
58		
59		
60		
61		
62		
63		
64		
65		
66		
67		
68		
69		
70		
71		
72		
73		
74		
75		
76		
77		
78		
79		
80		
81		
82		
83		
84		
85		
86		
87		
88		
89		
90		
91		
92		
93		
94		
95		
96		
97		
98		
99		
100		

PROJECT:
 RSM ARCHITECTS PVT. LTD.
 10th Floor, 100, Victoria Road, Haringey, London, N9 9UH
 Tel: 011-7688816, 7688817
 www.rsm.co.uk

PROJECT CONSULTANTS:
 RSM ARCHITECTS PVT. LTD.
 10th Floor, 100, Victoria Road, Haringey, London, N9 9UH
 Tel: 011-7688816, 7688817
 www.rsm.co.uk

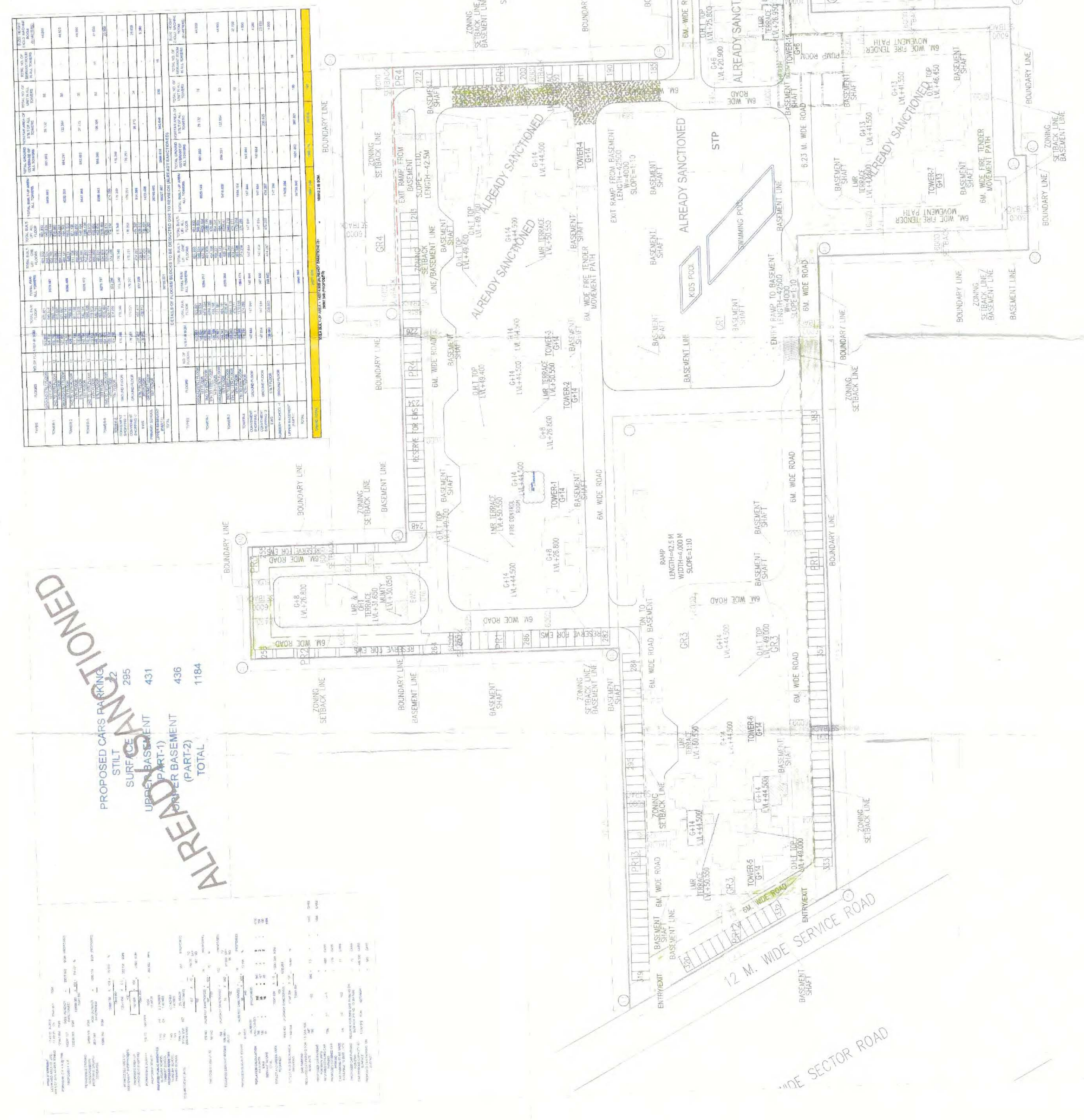
FOR SERVICE PLAN SUBMISSION:
 RSM ARCHITECTS PVT. LTD.
 10th Floor, 100, Victoria Road, Haringey, London, N9 9UH
 Tel: 011-7688816, 7688817
 www.rsm.co.uk

FOR SERVICE PLAN SUBMISSION:
 RSM ARCHITECTS PVT. LTD.
 10th Floor, 100, Victoria Road, Haringey, London, N9 9UH
 Tel: 011-7688816, 7688817
 www.rsm.co.uk



PROPOSED CARS PARKING

STILL	14
SURFACE	383
UPPER BASEMENT (PART-1)	661
UPPER BASEMENT (PART-2)	436
TOTAL	1494



PROPOSED CARS PARKING

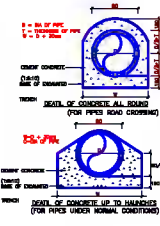
STILL	295
SURFACE	431
UPPER BASEMENT (PART-1)	456
UPPER BASEMENT (PART-2)	1184
TOTAL	2366

For Service Plan Submission
 RSM ARCHITECTS PVT. LTD.
 10th Floor, 100, Victoria Road, Haringey, London, N9 9UH
 Tel: 011-7688816, 7688817
 www.rsm.co.uk

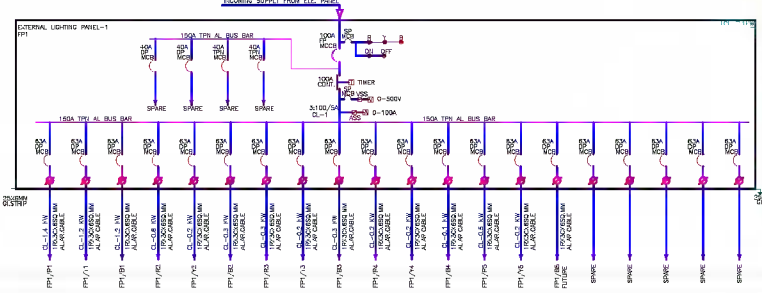
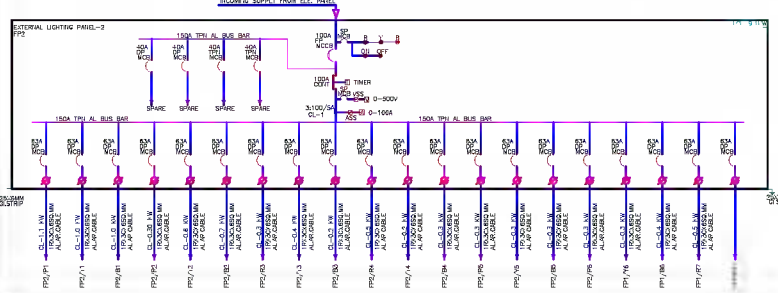
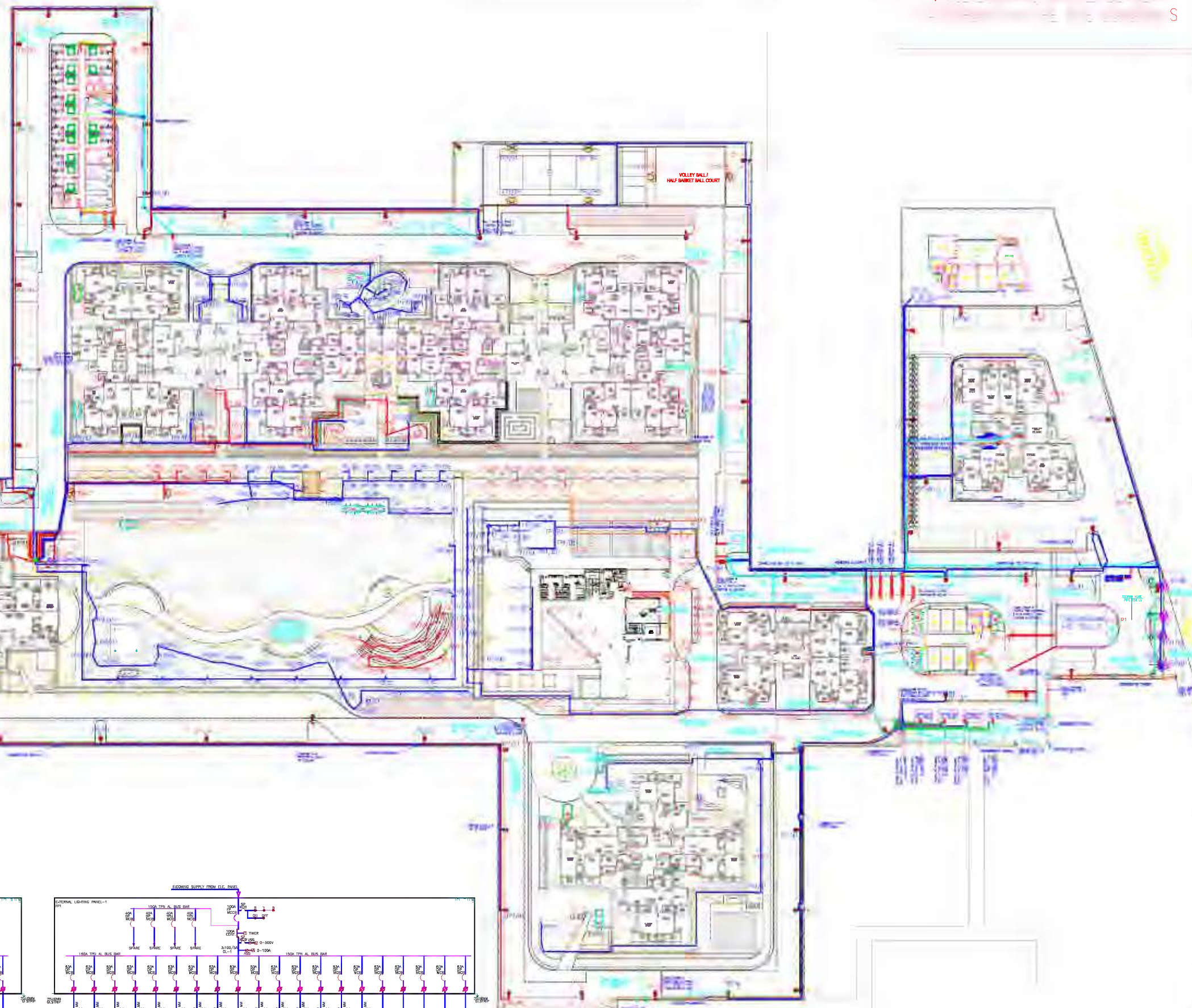
Director
 Town & Country Planning
 Haringey Council
 Haringey, London
 N9 9UH

SYM.	NAME	DISCRIPTION
●	STREET LIGHT	65 W LED, POLE HIGHT 6.0 MT
◆	POLE LIGHT	27 W LED, POLE HIGHT 3.0 MT
▲	SPIKE LIGHT	7 W LED
▼	FOOT LIGHT	3 W LED
○	UNDER WATER LIGHT	WATTAGE AS/PLUMBING
●	BOLLARD	9 W LED
○	Pool light	WATTAGE AS / PLUMBING
○	PLAY FIELD LIGHTS	250 W LED (2 LIGHTS ON EACH POLE)
●	UP & DOWN LIGHT	18 W LED
●	CEILING LIGHT	18 W LED

NAME	DISCRIPTION
□	GATE LIGHT
○	CCTV
○	FEEDER PILLER
□	600X600MM CHAMBER
□	EARTHING
—	MV HUME PIPE
—	LV HUME PIPE
—	EARTHING STRIP
—	CABLE ROUTE PHASE-B
—	CABLE ROUTE PHASE-Y
—	CABLE ROUTE PHASE-R



NOTE: ALL ROAD CROSSING HUME PIPE SIZE SHALL BE AS PER THE STANDARDS.



KEY PLAN

REVISIONS

NO.	DESCRIPTION	DATE
1	ISSUED FOR TENDER	15/08/2024

PROJECT: PROPOSED GROUP HOUSING, SECTOR-79 GURGAON

CLIENT: BANGSUN CITY DEVELOPERS PVT. LTD.

3rd Floor, Tower-A
Ansal Plaza, Sector-44
Gurgaon-122002, Haryana, India
Ph: 0124-4956150

DESIGNER: RSP Design Consultants (India) Pvt. Ltd.

Office No. 44 To 47, 4th Floor
Ansal Plaza, Sector-44
Gurgaon, Haryana, India
Phone: 0120-433451, 433452
e-mail: rsc_rsp@yahoo.com, rskrupa1967@yahoo.com

APPROVED FOR CONSTRUCTION

APPROVED FOR CONSTRUCTION

DATE: 15/08/2024

SCALE: 1:100

PROJECT: PROPOSED GROUP HOUSING, SECTOR-79 GURGAON

CLIENT: BANGSUN CITY DEVELOPERS PVT. LTD.

3rd Floor, Tower-A
Ansal Plaza, Sector-44
Gurgaon-122002, Haryana, India
Ph: 0124-4956150

DESIGNER: RSP Design Consultants (India) Pvt. Ltd.

Office No. 44 To 47, 4th Floor
Ansal Plaza, Sector-44
Gurgaon, Haryana, India
Phone: 0120-433451, 433452
e-mail: rsc_rsp@yahoo.com, rskrupa1967@yahoo.com

APPROVED FOR CONSTRUCTION

EXTERNAL LIGHTING LEGEND

SYM.	NAME	DISCRPTION	DISTANCE	NO.	RECOMMENDED MAKES	
					PHILIPS	WIPRO
1	STREET LIGHT	65 W LED, POLE HIGHT 6.0 MT		36	PHILIPS GREENLINE BRP409	SKYLINE LED LR02-781-XXX-57-XX
2	POLE LIGHT	27 W LED, POLE HIGHT 3.0 MT		102	PHILIPS BGP161KED23WW	URBANOLED PATHWAY LP06
3	SPIKE LIGHT	7 W LED		82	LEDSPOT BGP310 LED3S	GARDENIALED LF05
4	FOOT LIGHT	3 W LED		25	BWG150	LT50-050-XXX-30-XX
5	UNDER WATER LIGHT	WATTAGE AS/PLUMBING		30		
6	BOLLARD	9 W LED	5.0 mt C/C	12	LED BOLLARDS BCP150/151	FANTASYLED BOLLARD CLA 11
7	Pool light	WATTAGE AS / PLUMBING	5.0 mt C/C	18		
8	PLAY FIELD LIGHTS	250 W LED (2 LIGHTS ON EACH		18	TEMPO LED	REVO LED FLOOD LIGHT LF 07
9	UP & DOWN LIGHT	18 W LED		16		LW31-211-022-30-XX
10	CEILING LIGHT	18 W LED		05	LED7S/SM250C LED6S	LW01-101-XXX-57-XX

PRODUCED BY AN AUTODESK STUDENT VERSION

WIDE ROAD

PRODUCED BY AN AUTODESK STUDENT VERSION



PRELIMINARY DESIGN TENDER GPC

Project:
GODREJ
 SECTOR-79, GURGAON
 HARYANA

CONSULTANTS:
 RSP
 4700018

LANDSCAPE CONSULTANTS:
 MDA DESIGN (INDIA) PVT. LTD.
 25000018

DATE OF DRAWING :
EXTERNAL LIGHTING SCHEME
PARCEL - B

SCALE : 1:1000 DATE :
 DRAWN : CHECKED :
 DRAWING NO : LS-GOJ-(B)-03