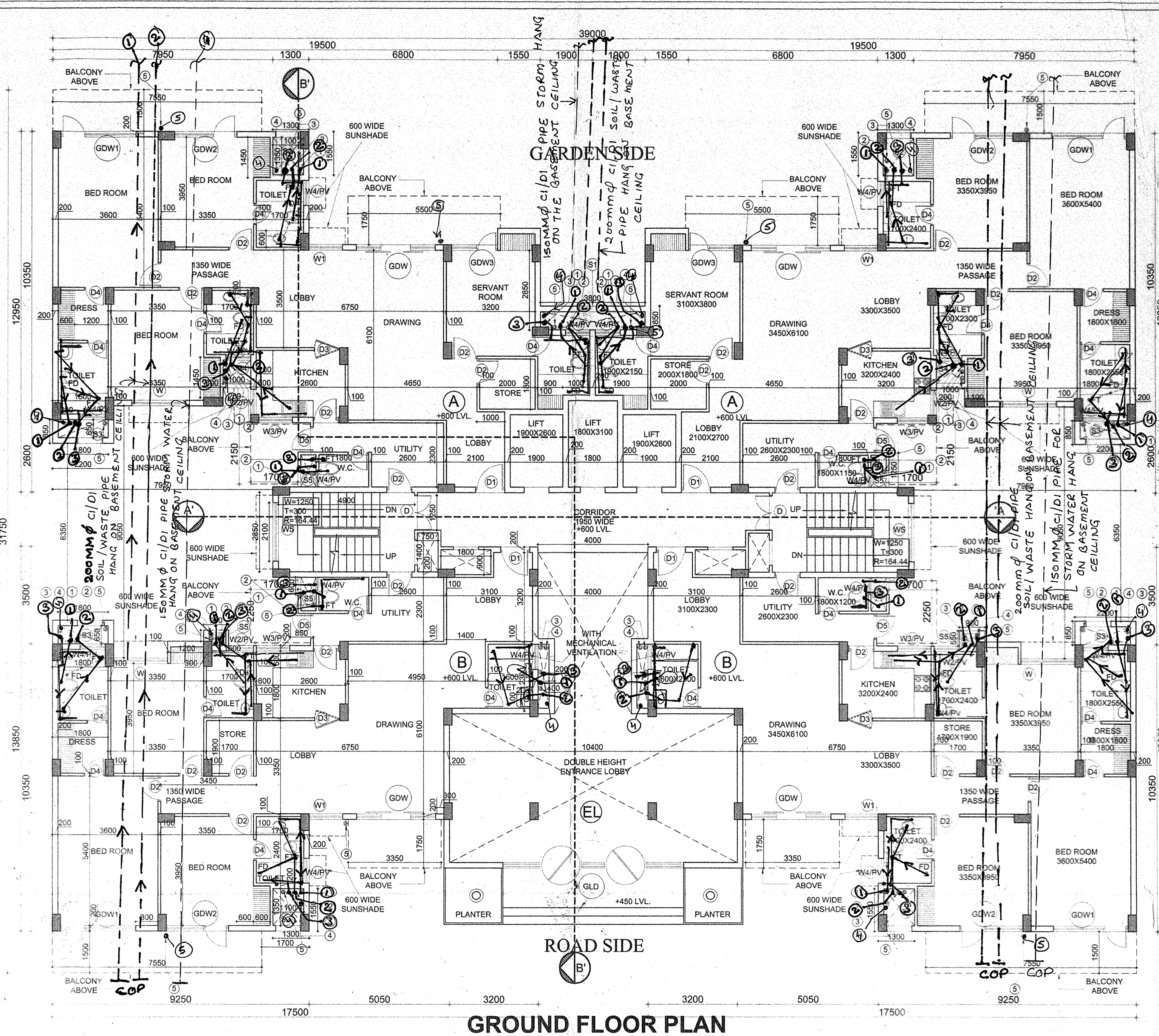
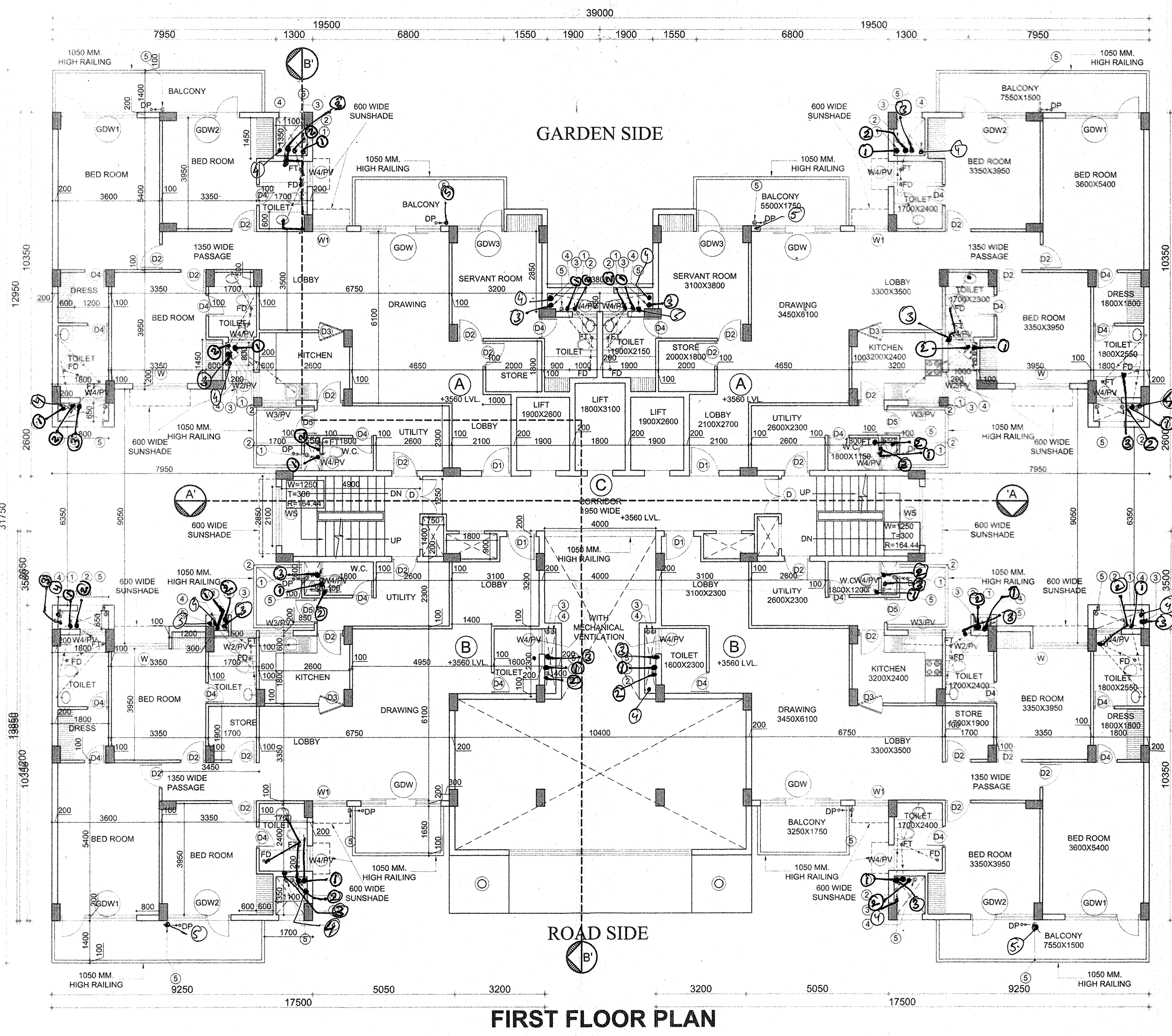


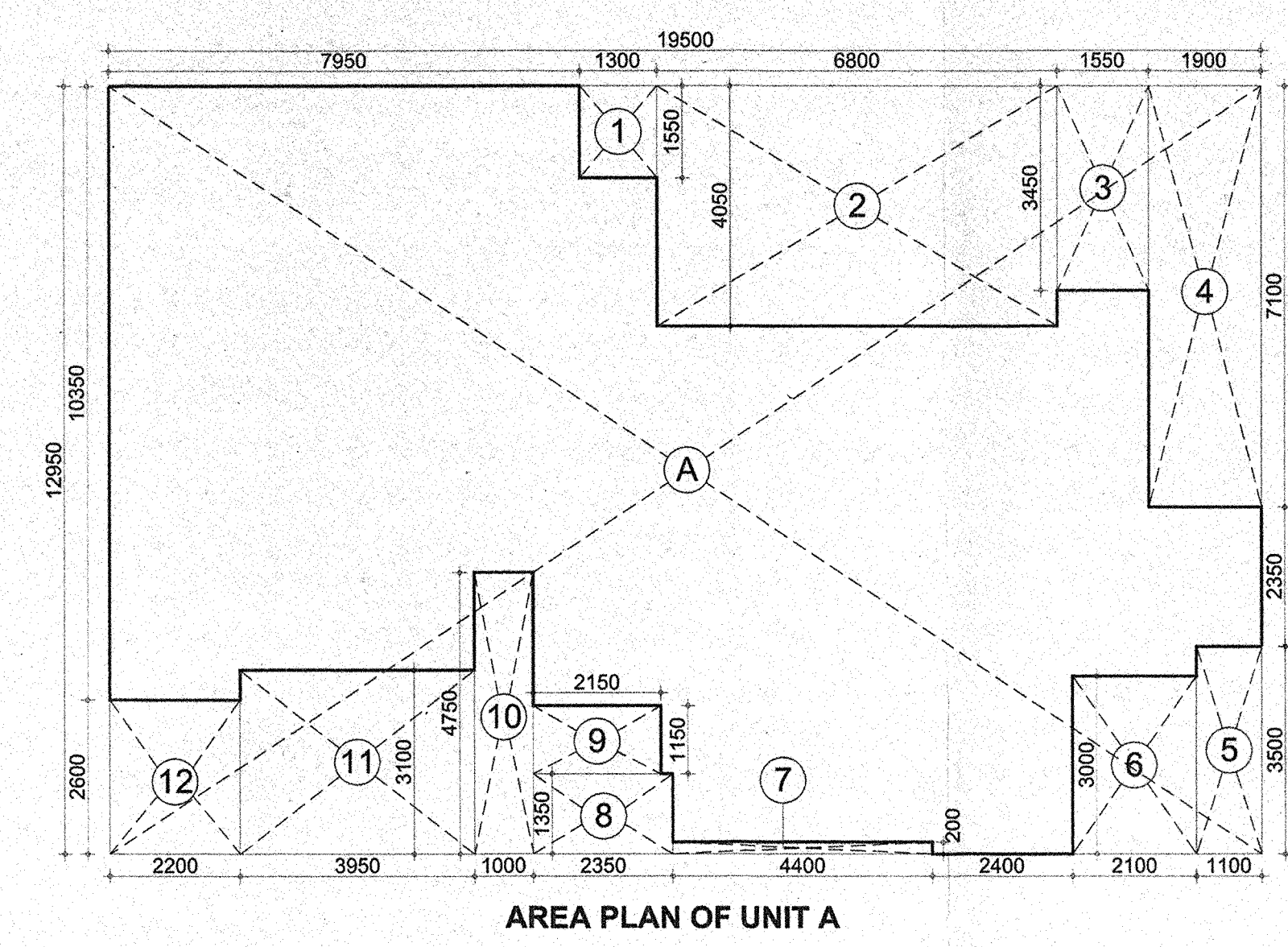
Notes:
 1. ALL DIMENSIONS ARE IN MILLIMETERS UNLESS NOTED OTHERWISE.
 2. WRITTEN DIMENSIONS ARE TO BE FOLLOWED. DRAWINGS ARE NOT TO BE SCALED.
 3. ANY DISCREPANCY IN THE DRAWINGS SHALL BE BROUGHT TO THE NOTICE OF THE ARCHITECTS.
 4. THIS DRAWING SHALL BE READ IN CONJUNCTION WITH OTHER RELEVANT DRAWINGS.



GROUND FLOOR PLAN



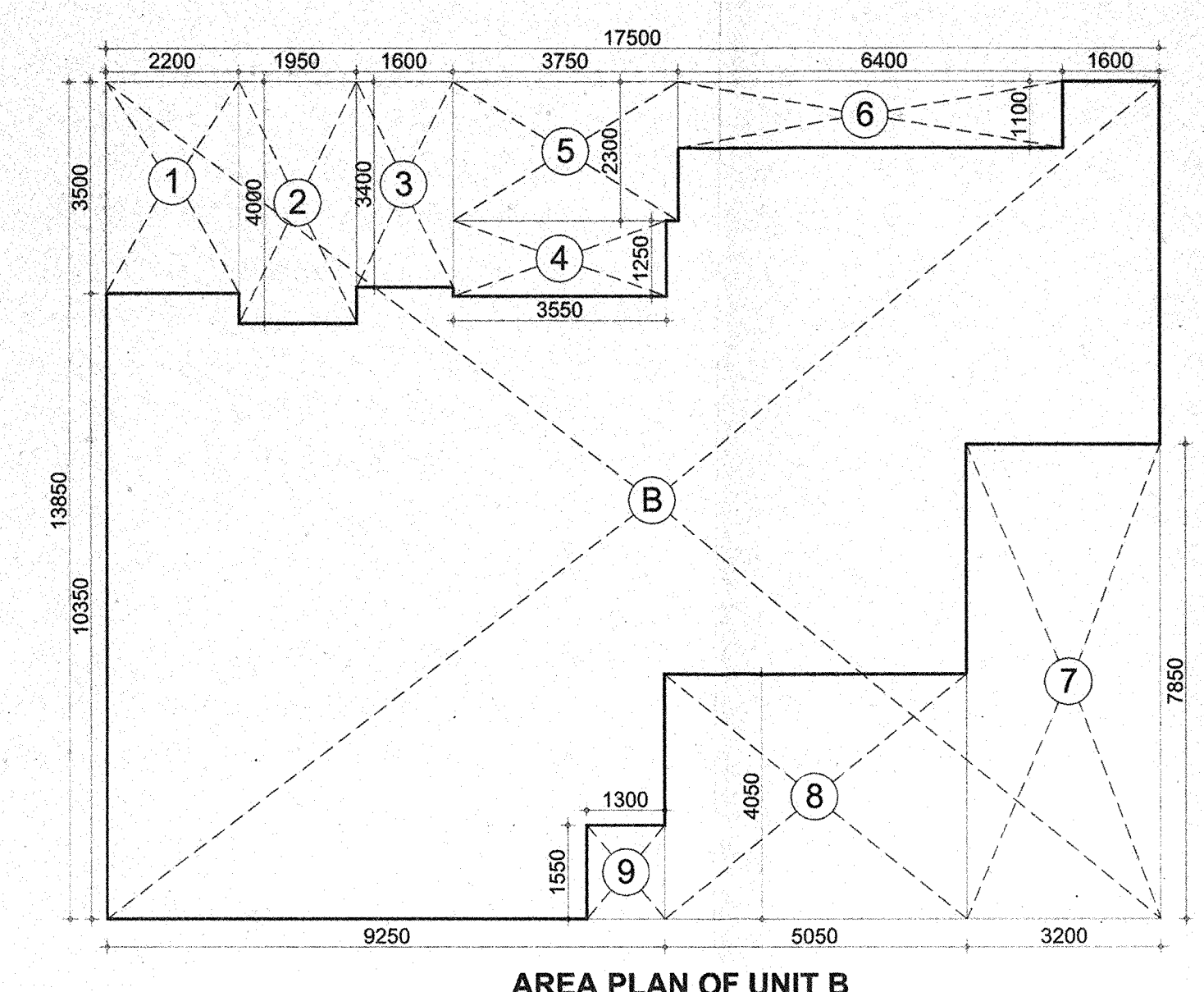
FIRST FLOOR PLAN



AREA PLAN OF UNIT A

AREA DETAIL OF UNIT (A):-
 COVD. AREA UNDER EACH UNIT A = 164.741 SQ.M.
 = A - (1 TO 12)
 = (19,600 X 12,950) - 87,784
 = 252,625 - 87,784 = 164,741 SQ.M.

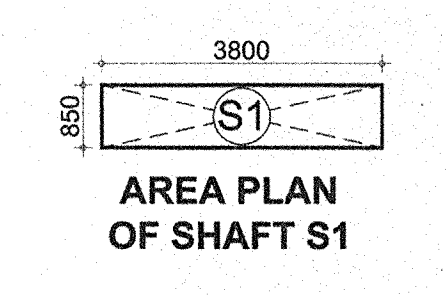
DEDUCTIONS:-
 1) 1,300 X 1,550 = 2,015 SQ.M.
 2) 6,800 X 4,050 = 27,540 SQ.M.
 3) 1,550 X 3,450 = 5,348 SQ.M.
 4) 1,900 X 7,100 = 13,490 SQ.M.
 5) 1,100 X 3,500 = 3,850 SQ.M.
 6) 2,100 X 3,000 = 6,300 SQ.M.
 7) 4,400 X 0,200 = 0,880 SQ.M.
 8) 2,350 X 1,350 = 3,173 SQ.M.
 9) 2,150 X 1,100 = 2,365 SQ.M.
 10) 1,000 X 4,750 = 4,750 SQ.M.
 11) 3,950 X 3,100 = 12,245 SQ.M.
 12) 2,200 X 2,600 = 5,720 SQ.M.
TOTAL OF (1 TO 12) = 87,784 SQ.M.



AREA PLAN OF UNIT B

AREA DETAIL OF UNIT (B):-
 COVD. AREA UNDER UNIT B = 153.744 SQ.M.
 = B - (1 TO 9)
 = (17,500 X 13,850) - 88,631
 = 242,375 - 88,631 = 153,744 SQ.M.

DEDUCTIONS:-
 1) 2,200 X 3,500 = 7,700 SQ.M.
 2) 1,950 X 4,000 = 7,800 SQ.M.
 3) 1,600 X 3,400 = 5,440 SQ.M.
 4) 3,550 X 1,250 = 4,438 SQ.M.
 5) 3,750 X 2,300 = 8,625 SQ.M.
 6) 6,400 X 1,100 = 7,040 SQ.M.
 7) 3,200 X 7,850 = 25,120 SQ.M.
 8) 5,050 X 4,050 = 20,453 SQ.M.
 9) 1,300 X 1,550 = 2,015 SQ.M.
TOTAL OF (1 TO 9) = 88,631 SQ.M.



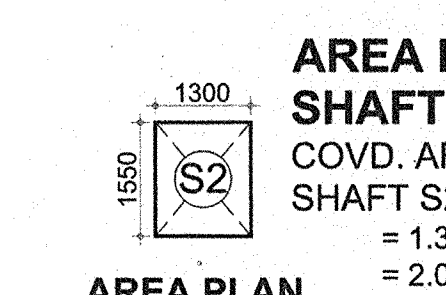
AREA PLAN OF SHAFT S1

AREA DETAIL OF SHAFT (S1):-
 COVD. AREA UNDER EACH SHAFT S1 = 3.230 SQ.M.
 = 3,800 X 0,850
 = 3,230 SQ.M.



AREA PLAN OF SHAFT S3

AREA DETAIL OF SHAFT (S3):-
 COVD. AREA UNDER EACH SHAFT S3 = 1,870 SQ.M.
 = 2,200 X 0,850
 = 1,870 SQ.M.



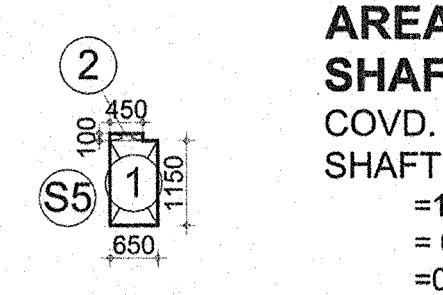
AREA PLAN OF SHAFT S2

AREA DETAIL OF SHAFT (S2):-
 COVD. AREA UNDER EACH SHAFT S2 = 2,015 SQ.M.
 = 1,300 X 1,550
 = 2,015 SQ.M.



AREA PLAN OF SHAFT S4

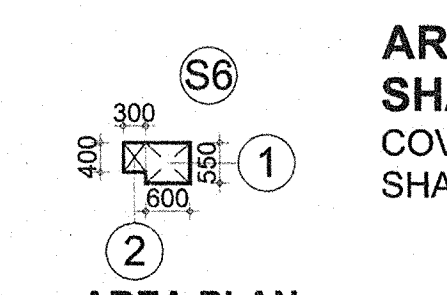
AREA DETAIL OF SHAFT (S4):-
 COVD. AREA UNDER EACH SHAFT S4 = 1,000 SQ.M.
 = 1,000 X 1,000
 = 1,000 SQ.M.



AREA PLAN OF SHAFT S5

AREA DETAIL OF SHAFT (S5):-
 COVD. AREA UNDER EACH SHAFT S5 = 0.793 SQ.M.
 = 1 + 2
 = 0,748 + 0,045
 = 0,793 SQ.M.

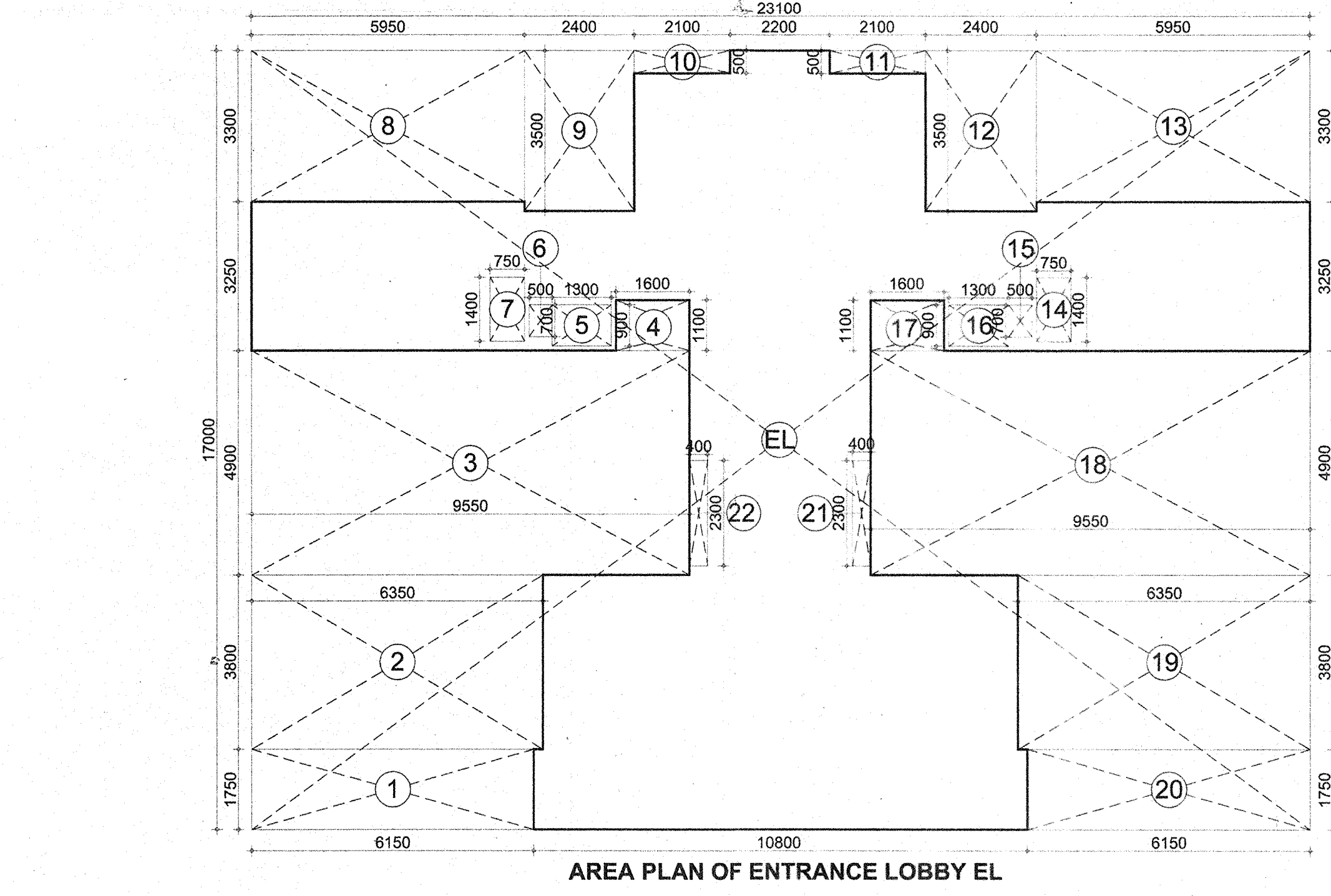
ADDITIONS:-
 1) 0,650 X 1,150 = 0,748 SQ.M.
 2) 0,450 X 0,100 = 0,045 SQ.M.
TOTAL OF (1 & 2) = 0,793 SQ.M.



AREA PLAN OF SHAFT S6

AREA DETAIL OF SHAFT (S6):-
 COVD. AREA UNDER EACH SHAFT S6 = 0.450 SQ.M.
 = 1 + 2
 = 0,330 + 0,120
 = 0,450 SQ.M.

ADDITIONS:-
 1) 0,600 X 0,550 = 0,330 SQ.M.
 2) 0,300 X 0,400 = 0,120 SQ.M.
TOTAL OF (1 & 2) = 0,450 SQ.M.



AREA PLAN OF ENTRANCE LOBBY EL

AREA DETAIL OF ENTRANCE LOBBY (EL):-
 COVD. AREA UNDER ENTRANCE LOBBY EL = 160.654 SQ.M.
 = EL - (1 TO 22)
 = (23,100 X 17,000) - 232,046
 = 392,700 - 232,046 = 160,654 SQ.M.

DEDUCTIONS:-
 1) 6,150 X 1,750 = 10,763 SQ.M.
 2) 6,350 X 3,800 = 24,130 SQ.M.
 3) 9,550 X 4,900 = 46,795 SQ.M.
 4) 1,600 X 1,100 = 1,760 SQ.M.
 5) 1,300 X 0,500 = 650 SQ.M.
 6) 0,500 X 0,700 = 0,350 SQ.M.
 7) 0,750 X 1,400 = 1,050 SQ.M.
 8) 5,950 X 3,300 = 19,635 SQ.M.
 9) 2,400 X 3,500 = 8,400 SQ.M.
 10) 2,100 X 0,500 = 1,050 SQ.M.
 11) 2,100 X 0,500 = 1,050 SQ.M.
 12) 2,400 X 3,500 = 8,400 SQ.M.
 13) 5,950 X 3,300 = 19,635 SQ.M.
 14) 750 X 1,400 = 1,050 SQ.M.
 15) 0,500 X 0,700 = 0,350 SQ.M.
 16) 1,300 X 0,900 = 1,170 SQ.M.
 17) 1,600 X 1,100 = 1,760 SQ.M.
 18) 5,950 X 3,300 = 19,635 SQ.M.
 19) 6,350 X 3,800 = 24,130 SQ.M.
 20) 6,150 X 1,750 = 10,763 SQ.M.
 21) 0,400 X 2,300 = 0,920 SQ.M.
 22) 0,400 X 2,300 = 0,920 SQ.M.
TOTAL OF (1 TO 22) = 232,046 SQ.M.

AREA STATEMENT OF BLOCK - A

1. COVD. AREA ON GROUND FLOOR = 822.466 SQ.M.
 2. COVD. AREA ON FIRST FLOOR = 702.385 SQ.M.
 3. COVD. AREA ON SECOND FLOOR = 746.643 SQ.M.
 4. COVD. AREA ON FOURTH FLOOR = 746.643 SQ.M.
 5. COVD. AREA ON SIXTH FLOOR = 746.643 SQ.M.
 6. COVD. AREA ON TYPICAL (3,5,7,8,9,10,11,12,13,14,15) FLOORS = 728.445 X 11 = 8012.895 SQ.M.
 7. COVD. AREA ON 18th FLOOR = 802.127 SQ.M.
 8. COVD. AREA ON 17th FLOOR = 836.141 SQ.M.
 9. COVD. AREA ON 18th FLOOR = 802.127 SQ.M.
 10. COVD. AREA ON 19th FLOOR = 882.631 SQ.M.
 11. COVD. AREA ON ALL FLOORS = 15201.83 SQ.M.
 = 1+2+3+4+5+6(11)+7+8+9+10
 = 822.466+702.385+746.643+746.643+746.643+(728.445X11)
 +802.127+836.141+802.127+882.631
 = 15201.83 SQ.M.

12. AREA OF MUMTY = 111.88 SQ.M.
 = (M1X2)+(M2X3)+(M3X2)
 = (42.576 + 35.274 + 34.030) SQ.M.
 = 111.88 SQ.M.

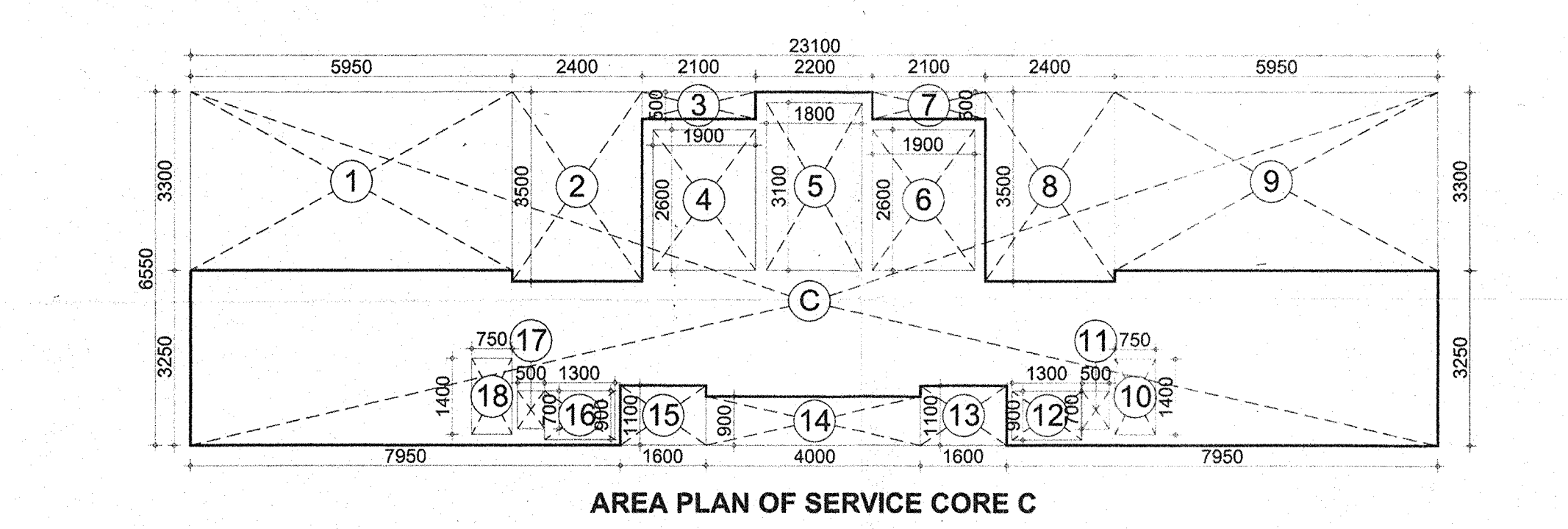
13. AREA OF MACHINE ROOM = 55.800 SQ.M.
 = 9.300 X 6.000 = 55.800 SQ.M.

AREA STATEMENT OF BLOCK - B

1. COVD. AREA ON GROUND FLOOR = 822.466 SQ.M.
 2. COVD. AREA ON FIRST FLOOR = 702.385 SQ.M.
 3. COVD. AREA ON SECOND FLOOR = 746.643 SQ.M.
 4. COVD. AREA ON FOURTH FLOOR = 746.643 SQ.M.
 5. COVD. AREA ON SIXTH FLOOR = 746.643 SQ.M.
 6. COVD. AREA ON TYPICAL (3,5,7,8,9,10,11,12,13,14,15) FLOORS = 728.445 X 11 = 8012.895 SQ.M.
 7. COVD. AREA ON 18th FLOOR = 802.127 SQ.M.
 8. COVD. AREA ON 17th FLOOR = 836.621 SQ.M.
 9. COVD. AREA ON 18th FLOOR = 802.127 SQ.M.
 10. COVD. AREA ON 19th FLOOR = 870.151 SQ.M.
 11. COVD. AREA ON ALL FLOORS = 15172.43 SQ.M.
 = 1+2+3+4+5+6(11)+7+8+9+10
 = 822.466+702.385+746.643+746.643+746.643+(728.445X11)
 +802.127+836.621+802.127+870.151
 = 15172.43 SQ.M.

12. AREA OF MUMTY = 111.88 SQ.M.
 = (M1X2)+(M2X3)+(M3X2)
 = (42.576 + 35.274 + 34.030) SQ.M.
 = 111.88 SQ.M.

13. AREA OF MACHINE ROOM = 55.800 SQ.M.
 = 9.300 X 6.000 = 55.800 SQ.M.



AREA PLAN OF SERVICE CORE C

AREA DETAIL OF SERVICE CORE (C):-
 COVD. AREA UNDER SERVICE CORE C = 65.415 SQ.M.
 = C - (1 TO 18)
 = (23,100 X 6,850) - 85,890
 = 151,305 - 85,890 = 65,415 SQ.M.

DEDUCTIONS:-
 1) 5,950 X 3,300 = 19,635 SQ.M.
 2) 2,400 X 3,500 = 8,400 SQ.M.
 3) 2,100 X 0,500 = 1,050 SQ.M.
 4) 1,900 X 2,600 = 4,940 SQ.M.
 5) 1,800 X 3,100 = 5,580 SQ.M.
 6) 1,900 X 2,600 = 4,940 SQ.M.
 7) 2,100 X 0,500 = 1,050 SQ.M.
 8) 2,400 X 3,500 = 8,400 SQ.M.
 9) 5,950 X 3,300 = 19,635 SQ.M.
 10) 0,750 X 1,400 = 1,050 SQ.M.
 11) 0,500 X 0,700 = 0,350 SQ.M.
 12) 1,300 X 0,900 = 1,170 SQ.M.
 13) 1,600 X 1,100 = 1,760 SQ.M.
 14) 4,000 X 0,900 = 3,600 SQ.M.
 15) 1,600 X 1,100 = 1,760 SQ.M.
 16) 1,300 X 0,900 = 1,170 SQ.M.
 17) 0,500 X 0,700 = 0,350 SQ.M.
 18) 0,750 X 1,400 = 1,050 SQ.M.
TOTAL OF (1 TO 18) = 85,890 SQ.M.

AREA DETAIL OF GROUND AND FIRST FLOOR

TOTAL COVD. AREA = 822.466 SQ.M.

1) COVD. AREA UNDER UNIT - A X 2 = 164.741 X 2 = 329.482 SQ.M.
 2) COVD. AREA OF ENTRANCE LOBBY - EL = 160.654 SQ.M.
 3) COVD. AREA UNDER UNIT - B X 2 = 153.744 X 2 = 307.488 SQ.M.
 4) COVD. AREA OF SHAFT - S1 = 3.230 SQ.M.
 5) COVD. AREA OF SHAFT - S2 X 4 = 2.015 X 4 = 8.060 SQ.M.
 6) COVD. AREA OF SHAFT - S3 X 4 = 1.870 X 4 = 7.480 SQ.M.
 7) COVD. AREA OF SHAFT - S4 X 2 = 1.000 X 2 = 2.000 SQ.M.
 8) COVD. AREA OF SHAFT - S5 X 4 = 0.793 X 4 = 3.172 SQ.M.
 9) COVD. AREA OF SHAFT - S6 X 2 = 0.450 X 2 = 0.900 SQ.M.
TOTAL OF 1 TO 9 = 822.466 SQ.M.

AREA DETAIL OF FIRST FLOOR

TOTAL COVD. AREA = 702.385 SQ.M.

1) COVD. AREA UNDER UNIT - A X 2 = 164.741 X 2 = 329.482 SQ.M.
 2) COVD. AREA OF SERVICE CORE - C = 65.415 SQ.M.
 3) COVD. AREA UNDER UNIT - B X 2 = 153.744 X 2 = 307.488 SQ.M.
TOTAL OF 1 TO 3 = 702.385 SQ.M.

SCHEDULE OF OPENINGS

DOORS

S.No.	TYPE	SIZE	SILL LVL.	LIN LVL.	TENTATIVE LOCATION	MATERIAL
1	D	1250X2450	00	2450	STAIRCASE	23FRP (RESERVATIONS)
2	D1	1050X2450	00	2450	MAIN DOOR	(WD.+GL)
3	D2	900X2100	00	2100	BEDROOM / STORE / UTILITY	(WD.)
4	D3	900X2100	00	2100	KITCHEN (SWING DOOR)	(WD.)
5	D4	750X2100	00	2100	TOILET/DRESS	(WD.)
6	D5	900X2450	00	2450	UTILITY	(WD.)

WINDOWS

S.No.	TYPE	SIZE	SILL LVL.	LIN LVL.	TENTATIVE LOCATION	MATERIAL
1	W1	1950X1700	1750	2450	BEDROOM	(AL.+GL)
2	W1	1300X2150	300	2450	DRAWING/DINING RM.	(AL.+GL)
3	W2/FV1	900X1400	1050	2450	KITCHEN	(AL.+GL)
4	W3/FV1	1200X1400	1050	2450	KITCHEN	(AL.+GL)
5	W4/FV1	900X1400	1050	2450	TOILET	(AL.+GL)
6	W5	1450X1700	750	2450	BEDROOM	(AL.+GL)
7	W6	1500X1700	750	2450	BEDROOM FLOOR TOILET (FV)	(AL.+GL)

DOOR - WINDOWS

S.No.	TYPE	SIZE	SILL LVL.	LIN LVL.	TENTATIVE LOCATION	MATERIAL
1	DW	D-1050X2450	00/1300	2450	DRAWING TO BALCONY	(AL.+GL)
2	DW1	D-900X2450	00/1750	2450	BEDROOM TO BALCONY	(AL.+GL)
3	DW2	D-900X2450	00/1750	2450	BEDROOM TO BALCONY	(AL.+GL)
4	DW3	D-750X2450	00/1750	2450	BEDROOM TO BALCONY	(AL.+GL)
5	GLD	(D-1500X2450) X 2	00/300	5410	ENTRANCE LOBBY	(AL.+GL)
6	GL1	(W-5850+1300) X 2150	00/300	2450	18TH FLOOR - A	(AL.+GL)
7	GL2	(W-5850+1300) X 2150	00/300	2450	18TH FLOOR - B	(AL.+GL)
8	GL3	(W-7300+1300) X 2150	00/300	2450	19TH FLOOR - A	(AL.+GL)

Job title: **EDGE TOWER**
 RAMPRASTHA CITY
 SECTOR 37-D GURGAON

FLOOR PLANS
 (Block - A & B)

Client: **M/S S.A. INFRA TECH PVT. LTD ,**
 C-10, 'C' BLOCK, VASANT VIHAR MARKET,
 NEW DELHI

Architect: **UDAY PANDE**
 CA87/10856-ATP-8826

Owner: **For S.A. Infotech (P) Ltd.**

Project Team:

Scale: 1 : 100

Drng. No.:

Date:

Revisions Suffix: **R 0**

Architects: **Nivedita & Uday Pande Consultants**
 Architects, Engineers, Urban & Regional Planners
 (An ISO 9001 : 2000 Certified Company)
 B/23-25, Kailash Colony, New Delhi - 110048
 Ph: +91-11-29246012/13/14, Fax : 29234320
 e-mail:- nuparch@nupc.net, nuparch@rediffmail.com

This drawing/design is property of Nivedita & Uday Pande Consultants. No part of this may be reproduced or implemented in any form without prior permission in writing from Architects. Any person doing so, shall be liable to criminal prosecution and civil claims for damages.