

Note :-  
1. BUILDING WILL BE DESIGNED (STRUCTURES)  
AS PER RELEVANT IS CODES FOR EARTH QUAKE  
RESISTANCE.

**PROJECT**  
REVISED BUILDING PLANS OF COMMERCIAL  
BUILDING NO. 239 OF 2007 DATED 25.10.2007, LICENCE  
NO. 240 OF 2007 DATED 25.10.2007 AND 8.80023 ACRES  
LAND NO. 12/2004, 12/2004, 12/2004, 12/2004, 12/2004  
OF 2008 DATED 8.12.2008 TOTALING 24.4778 ACRES IN  
SECTOR-02, GURUGRAM MANESAR URBAN COMPLEX  
INFRASTRUCTURE LTD.  
**CLIENT**  
PIONEER URBAN LAND & INFRASTRUCTURE LTD.

**DESIGN ARCHITECT**  
**RSP**  
RSP Design consultants  
(India) Pvt. Ltd.  
101, Park Road, Sector 16, Gurgaon, Haryana  
HEAD OFFICE: 122001, GURUGRAM, HARYANA  
TEL: 011-26889616, 26889617  
WWW.RSPINDIA.COM

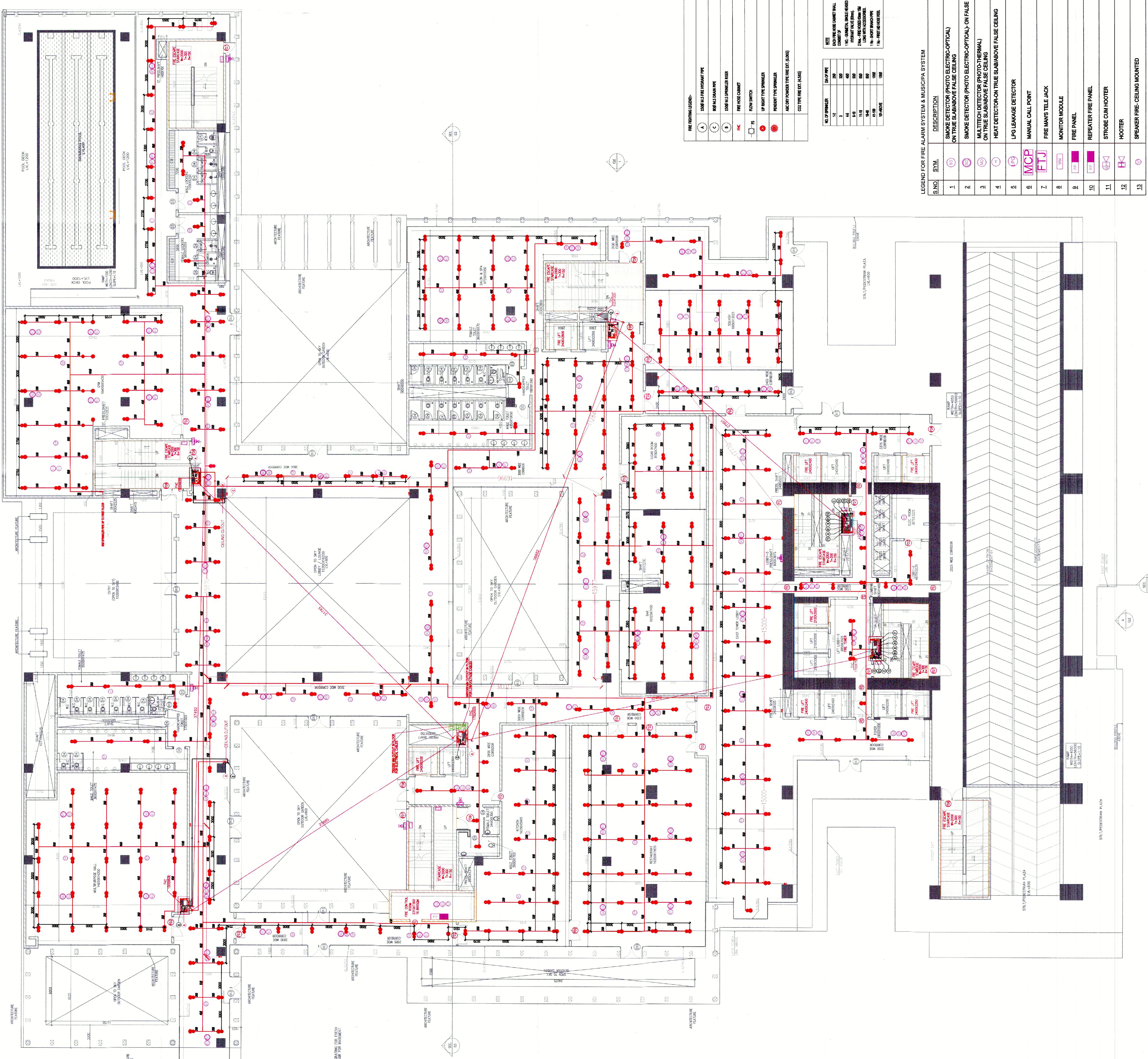
**ASSOCIATE ARCHITECT**  
**RISIMIS**  
RISIMIS ARCHITECTS PVT. LTD.  
69, Nara Niwas Bhawanij Kurnj  
(Behind D2), Vasant Kunj,  
New Delhi-110070.  
Tel.: 011-26889616, 26889617  
WWW.RISIMIS-ARCH.COM

**MEP CONSULTANT:**  
SUNIL MAYAR CONSULTING ENGINEERS LLP  
206-206A, 2ND FLOOR, TIME CENTRE, DLF GOLF  
COURSE ROAD, SECTOR-54, GURGAON-122002,  
HARYANA (INDIA)  
URL: WWW.SMC.CO.IN

**FIRE SUBMISSION**

Approved by Fire & Safety Department  
Gurgaon  
Fire Fighting Scheme Approved  
Scheme No. 116/2024, 20.5.17/24

IT IS CERTIFIED THAT THESE DRAWINGS ARE AS PER APPROVED  
DWG BY FFP (GURGAON) AS PER APPROVED (PERSONAL COMMITTEE)  
GURGAON, HARYANA  
DWG NO. 24-3338/PAD/023/187 DATED: 15-06-2024  
OWNER'S SEAL & SIGNATURE  
Drawing No. - SNC-CB-FP-01  
26882024-1

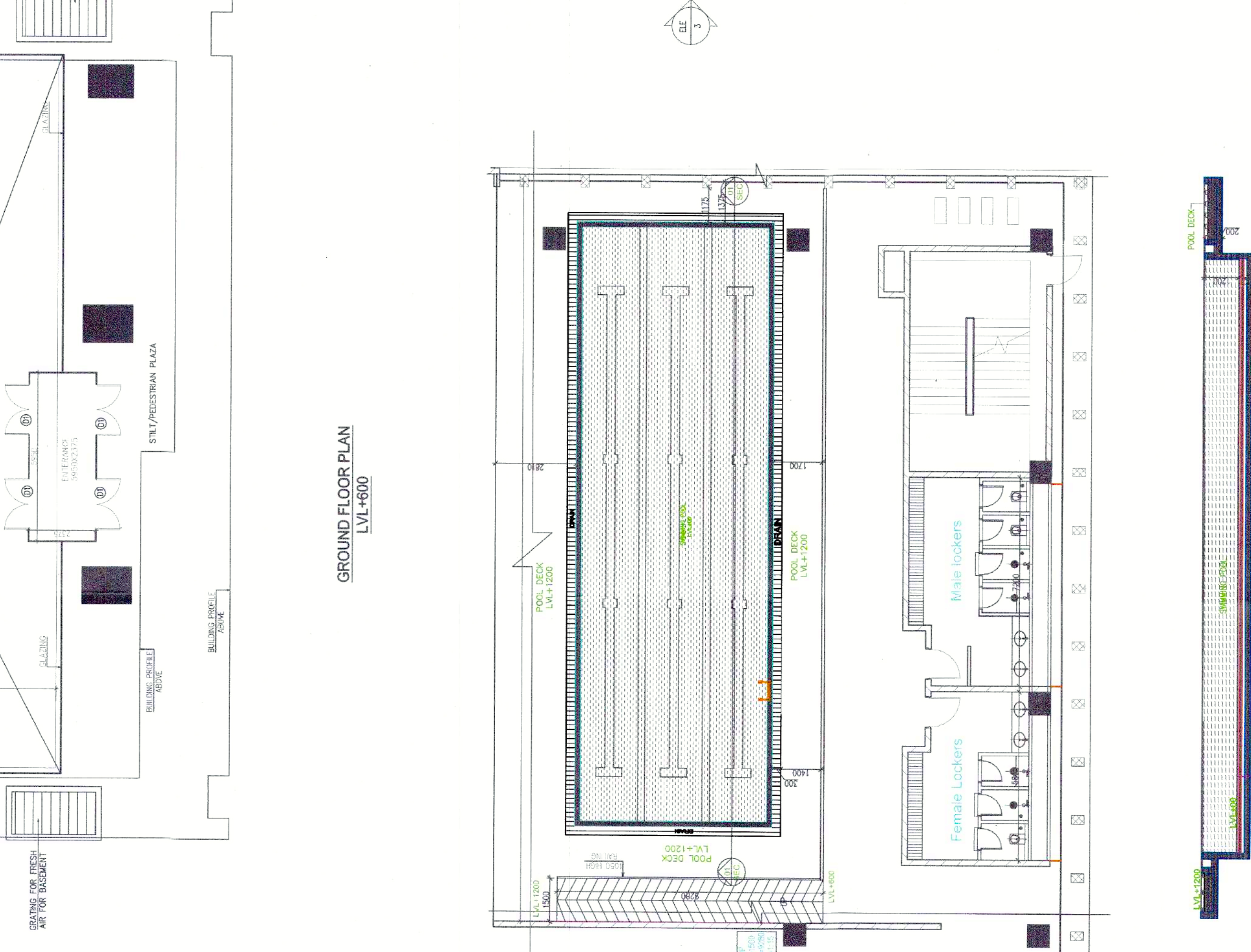
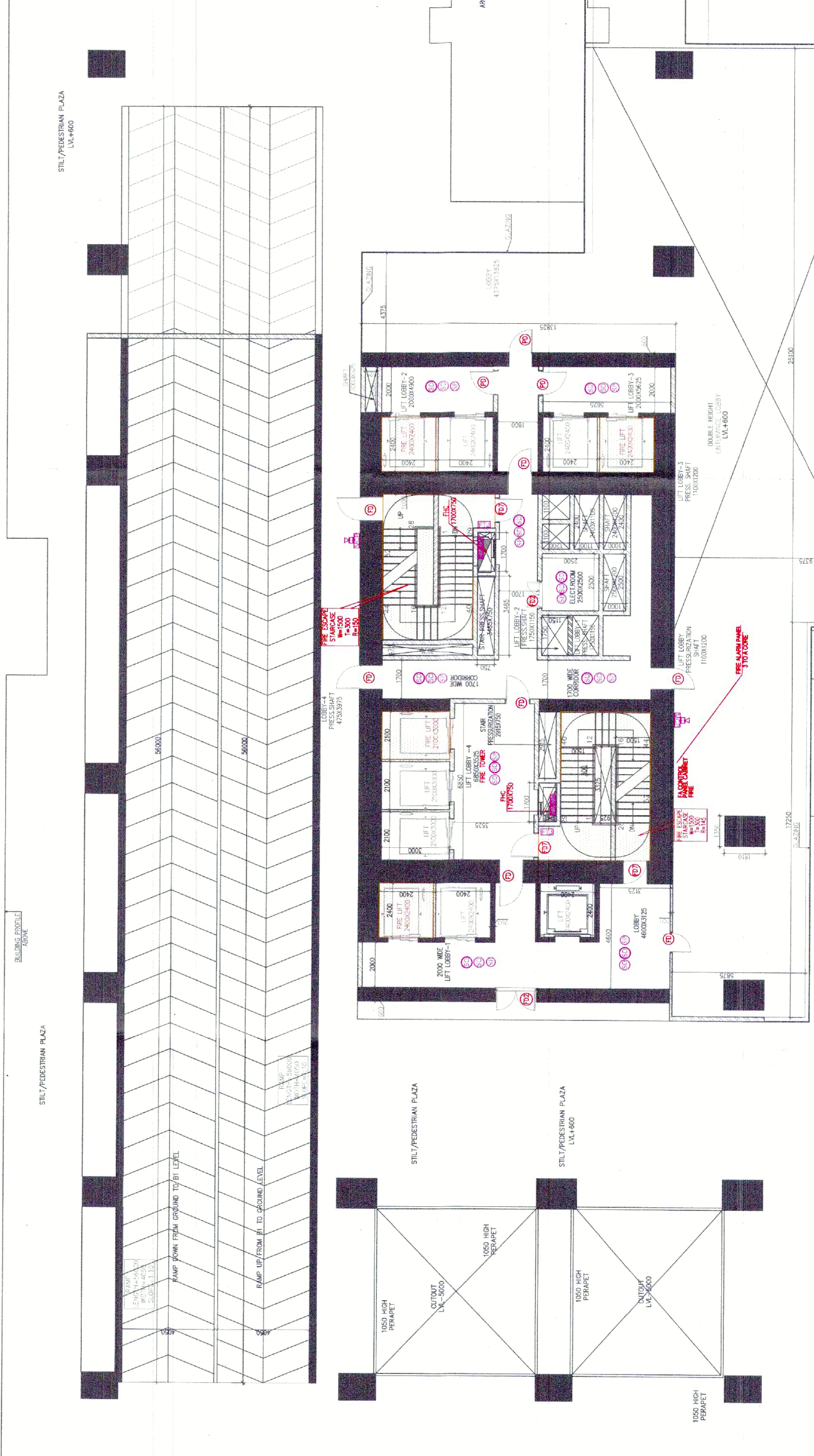


**LEGEND FOR FIRE ALARM SYSTEM & MUSIC/PA SYSTEM**

S.NO.	SYMBOL	DESCRIPTION
1	(Symbol)	SMOKE DETECTOR (PHOTO ELECTRO-OPTICAL) ON THE SUBROOF FALSE CEILING
2	(Symbol)	SMOKE DETECTOR (PHOTO ELECTRO-OPTICAL) ON-FALSE CEILING
3	(Symbol)	MULTI TECH DETECTOR (PHOTO THERMAL)
4	(Symbol)	HEAT DETECTOR ON FIRE SUBROOF FALSE CEILING
5	(Symbol)	LPG LEAKAGE DETECTOR
6	(Symbol)	MANUAL CALL POINT
7	(Symbol)	FIRE MAN'S TELE ACK
8	(Symbol)	MONITOR MODULE
9	(Symbol)	FIRE PANEL
10	(Symbol)	REPEATER FIRE PANEL
11	(Symbol)	STROBE LIGHT HOOPER
12	(Symbol)	HOOPER
13	(Symbol)	SPRINKLER FIRE CEILING MOUNTED

**LEGEND FOR FIRE ALARM SYSTEM & MUSIC/PA SYSTEM**

S.NO.	SYMBOL	DESCRIPTION
1	(Symbol)	SMOKE DETECTOR (PHOTO ELECTRO-OPTICAL) ON THE SUBROOF FALSE CEILING
2	(Symbol)	SMOKE DETECTOR (PHOTO ELECTRO-OPTICAL) ON-FALSE CEILING
3	(Symbol)	MULTI TECH DETECTOR (PHOTO THERMAL)
4	(Symbol)	HEAT DETECTOR ON FIRE SUBROOF FALSE CEILING
5	(Symbol)	LPG LEAKAGE DETECTOR
6	(Symbol)	MANUAL CALL POINT
7	(Symbol)	FIRE MAN'S TELE ACK
8	(Symbol)	MONITOR MODULE
9	(Symbol)	FIRE PANEL
10	(Symbol)	REPEATER FIRE PANEL
11	(Symbol)	STROBE LIGHT HOOPER
12	(Symbol)	HOOPER
13	(Symbol)	SPRINKLER FIRE CEILING MOUNTED



**ITEMS OF JOINTS**

NO.	DETAIL	LOCATION
1	...	...
2	...	...
3	...	...
4	...	...
5	...	...
6	...	...
7	...	...
8	...	...
9	...	...
10	...	...
11	...	...
12	...	...
13	...	...
14	...	...
15	...	...
16	...	...
17	...	...
18	...	...
19	...	...
20	...	...
21	...	...
22	...	...
23	...	...
24	...	...
25	...	...
26	...	...
27	...	...
28	...	...
29	...	...
30	...	...
31	...	...
32	...	...
33	...	...
34	...	...
35	...	...
36	...	...
37	...	...
38	...	...
39	...	...
40	...	...
41	...	...
42	...	...
43	...	...
44	...	...
45	...	...
46	...	...
47	...	...
48	...	...
49	...	...
50	...	...