

LEGEND PLUMBING PIPE:

S.No.	DESCRIPTION
1.	100 ØD VCL PIPE
2.	100 ØD WASTE PIPE
3.	100 ØD WASTE WASTE PIPE
3A.	100 ØD WASTE WASTE PIPE
3B.	100 ØD WASTE WASTE PIPE
3C.	100 ØD WASTE WASTE PIPE
3D.	100 ØD WASTE WASTE PIPE
3E.	100 ØD WASTE WASTE PIPE
3F.	100 ØD WASTE WASTE PIPE
3G.	100 ØD WASTE WASTE PIPE
3H.	100 ØD WASTE WASTE PIPE
3I.	100 ØD WASTE WASTE PIPE
3J.	100 ØD WASTE WASTE PIPE
3K.	100 ØD WASTE WASTE PIPE
3L.	100 ØD WASTE WASTE PIPE
3M.	100 ØD WASTE WASTE PIPE
3N.	100 ØD WASTE WASTE PIPE
3O.	100 ØD WASTE WASTE PIPE
3P.	100 ØD WASTE WASTE PIPE
3Q.	100 ØD WASTE WASTE PIPE
3R.	100 ØD WASTE WASTE PIPE
3S.	100 ØD WASTE WASTE PIPE
3T.	100 ØD WASTE WASTE PIPE
3U.	100 ØD WASTE WASTE PIPE
3V.	100 ØD WASTE WASTE PIPE
3W.	100 ØD WASTE WASTE PIPE
3X.	100 ØD WASTE WASTE PIPE
3Y.	100 ØD WASTE WASTE PIPE
3Z.	100 ØD WASTE WASTE PIPE

LEGEND FIRE FIGHTING PIPE:

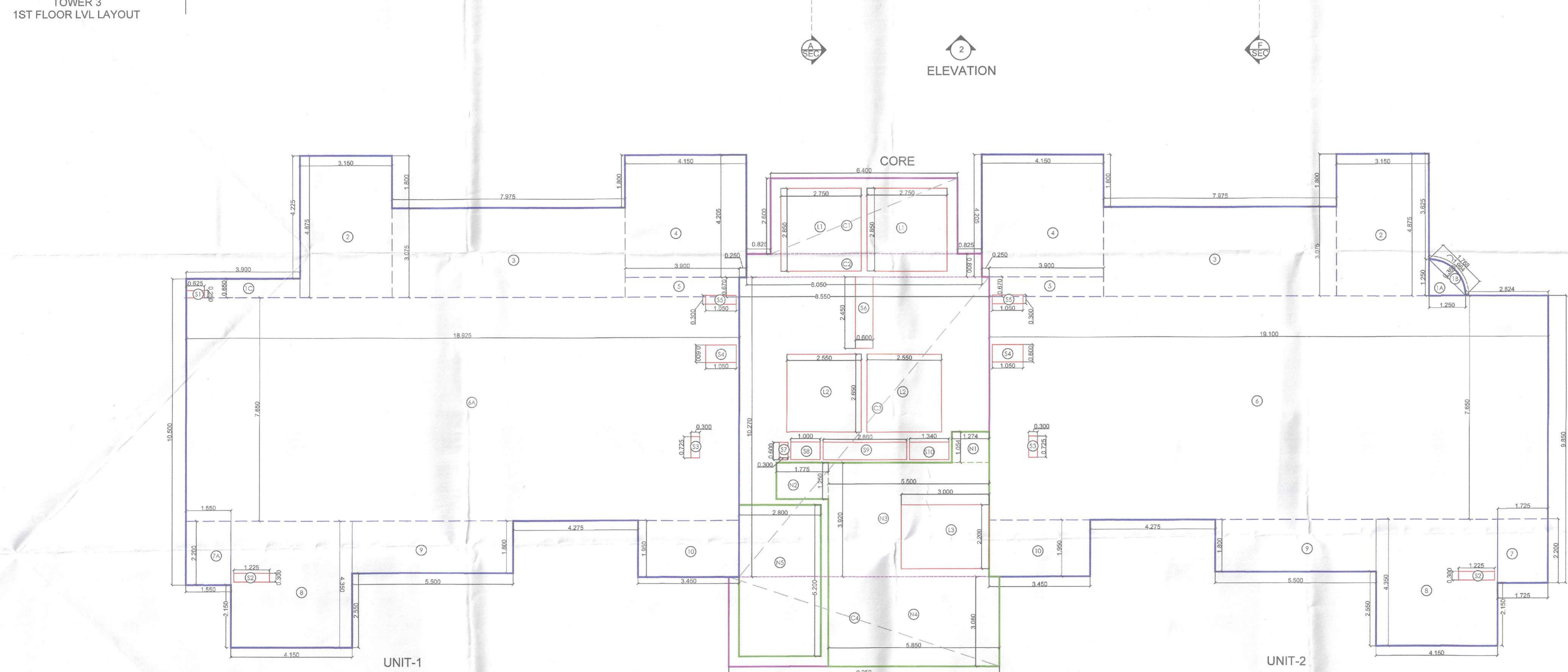
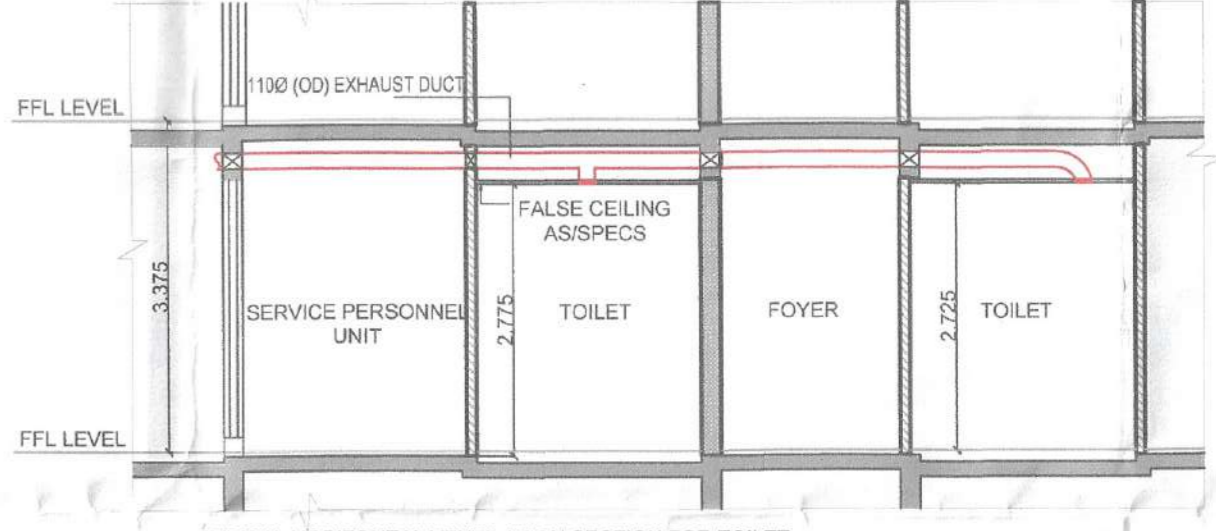
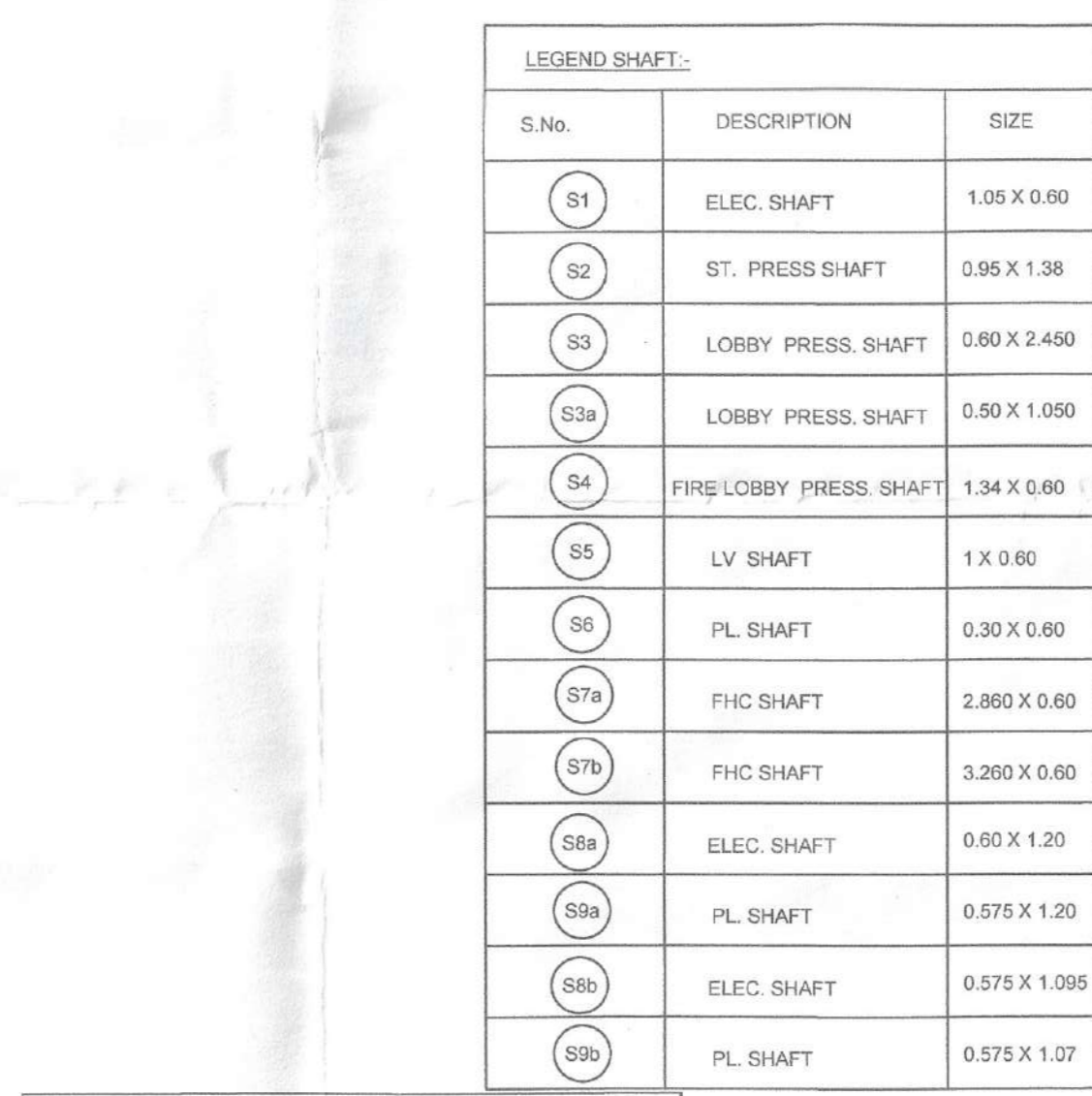
S.No.	DESCRIPTION
1.	100 ØD FIRE PIPE
2.	100 ØD FIRE PIPE
3.	100 ØD FIRE PIPE
4.	100 ØD FIRE PIPE
5.	100 ØD FIRE PIPE
6.	100 ØD FIRE PIPE
7.	100 ØD FIRE PIPE
8.	100 ØD FIRE PIPE
9.	100 ØD FIRE PIPE
10.	100 ØD FIRE PIPE
11.	100 ØD FIRE PIPE
12.	100 ØD FIRE PIPE
13.	100 ØD FIRE PIPE
14.	100 ØD FIRE PIPE
15.	100 ØD FIRE PIPE
16.	100 ØD FIRE PIPE
17.	100 ØD FIRE PIPE
18.	100 ØD FIRE PIPE
19.	100 ØD FIRE PIPE
20.	100 ØD FIRE PIPE
21.	100 ØD FIRE PIPE
22.	100 ØD FIRE PIPE
23.	100 ØD FIRE PIPE
24.	100 ØD FIRE PIPE
25.	100 ØD FIRE PIPE
26.	100 ØD FIRE PIPE
27.	100 ØD FIRE PIPE
28.	100 ØD FIRE PIPE
29.	100 ØD FIRE PIPE
30.	100 ØD FIRE PIPE
31.	100 ØD FIRE PIPE
32.	100 ØD FIRE PIPE
33.	100 ØD FIRE PIPE
34.	100 ØD FIRE PIPE
35.	100 ØD FIRE PIPE
36.	100 ØD FIRE PIPE
37.	100 ØD FIRE PIPE
38.	100 ØD FIRE PIPE
39.	100 ØD FIRE PIPE
40.	100 ØD FIRE PIPE
41.	100 ØD FIRE PIPE
42.	100 ØD FIRE PIPE
43.	100 ØD FIRE PIPE
44.	100 ØD FIRE PIPE
45.	100 ØD FIRE PIPE
46.	100 ØD FIRE PIPE
47.	100 ØD FIRE PIPE
48.	100 ØD FIRE PIPE
49.	100 ØD FIRE PIPE
50.	100 ØD FIRE PIPE

LEGEND SHAFT:

S.No.	DESCRIPTION	SIZE
81.	ELEC. SHAFT	1.05 X 0.90
82.	ST. PRESS. SHAFT	0.95 X 1.38
83.	LOBBY PRESS. SHAFT	0.80 X 2.40
83A.	LOBBY PRESS. SHAFT	0.80 X 1.00
84.	FIRE PRESS. SHAFT	1.34 X 0.90
85.	LV SHAFT	1.0 X 0.90
86.	PL SHAFT	0.30 X 0.90
87A.	FHC SHAFT	2.80 X 0.60
87B.	FHC SHAFT	3.20 X 0.60
88A.	ELEC. SHAFT	0.60 X 1.20
88B.	PL SHAFT	0.675 X 1.20
88C.	ELEC. SHAFT	0.675 X 1.095
88D.	PL SHAFT	0.675 X 1.07

DOOR WINDOW SCHEDULE

TYPE	WIDTH	HEIGHT	ALL LVL	INTEL. LVL	REMARKS
D1	1100	2400	±0.00	2300	BEDROOM
D2	750	2700	±0.00	2700	KITCHEN
D3	750	2400	±0.00	2400	TOILETS
D4	1500	2400	±0.00	2400	M. BEDROOM
D5	1200	2400	±0.00	2400	MULTI-MACHINE ROOM
D6	1200	2700	±0.00	2700	LIVING/DINING
D7	1200	2700	±0.00	2700	LIVING/DINING
D8	1200	2700	±0.00	2700	M. BEDROOM
D9	1200	2700	±0.00	2700	LIVING/DINING
D10	1200	2700	±0.00	2700	M. BEDROOM
D11	1200	2700	±0.00	2700	LIVING/DINING
D12	1200	2700	±0.00	2700	M. BEDROOM
D13	1200	2700	±0.00	2700	LIVING/DINING
D14	1200	2700	±0.00	2700	M. BEDROOM
D15	1200	2700	±0.00	2700	LIVING/DINING
D16	1200	2700	±0.00	2700	M. BEDROOM
D17	1200	2700	±0.00	2700	LIVING/DINING
D18	1200	2700	±0.00	2700	M. BEDROOM
D19	1200	2700	±0.00	2700	LIVING/DINING
D20	1200	2700	±0.00	2700	M. BEDROOM
D21	1200	2700	±0.00	2700	LIVING/DINING
D22	1200	2700	±0.00	2700	M. BEDROOM
D23	1200	2700	±0.00	2700	LIVING/DINING
D24	1200	2700	±0.00	2700	M. BEDROOM
D25	1200	2700	±0.00	2700	LIVING/DINING
D26	1200	2700	±0.00	2700	M. BEDROOM
D27	1200	2700	±0.00	2700	LIVING/DINING
D28	1200	2700	±0.00	2700	M. BEDROOM
D29	1200	2700	±0.00	2700	LIVING/DINING
D30	1200	2700	±0.00	2700	M. BEDROOM
D31	1200	2700	±0.00	2700	LIVING/DINING
D32	1200	2700	±0.00	2700	M. BEDROOM
D33	1200	2700	±0.00	2700	LIVING/DINING
D34	1200	2700	±0.00	2700	M. BEDROOM
D35	1200	2700	±0.00	2700	LIVING/DINING
D36	1200	2700	±0.00	2700	M. BEDROOM
D37	1200	2700	±0.00	2700	LIVING/DINING
D38	1200	2700	±0.00	2700	M. BEDROOM
D39	1200	2700	±0.00	2700	LIVING/DINING
D40	1200	2700	±0.00	2700	M. BEDROOM
D41	1200	2700	±0.00	2700	LIVING/DINING
D42	1200	2700	±0.00	2700	M. BEDROOM
D43	1200	2700	±0.00	2700	LIVING/DINING
D44	1200	2700	±0.00	2700	M. BEDROOM
D45	1200	2700	±0.00	2700	LIVING/DINING
D46	1200	2700	±0.00	2700	M. BEDROOM
D47	1200	2700	±0.00	2700	LIVING/DINING
D48	1200	2700	±0.00	2700	M. BEDROOM
D49	1200	2700	±0.00	2700	LIVING/DINING
D50	1200	2700	±0.00	2700	M. BEDROOM
D51	1200	2700	±0.00	2700	LIVING/DINING
D52	1200	2700	±0.00	2700	M. BEDROOM
D53	1200	2700	±0.00	2700	LIVING/DINING
D54	1200	2700	±0.00	2700	M. BEDROOM
D55	1200	2700	±0.00	2700	LIVING/DINING
D56	1200	2700	±0.00	2700	M. BEDROOM
D57	1200	2700	±0.00	2700	LIVING/DINING
D58	1200	2700	±0.00	2700	M. BEDROOM
D59	1200	2700	±0.00	2700	LIVING/DINING
D60	1200	2700	±0.00	2700	M. BEDROOM
D61	1200	2700	±0.00	2700	LIVING/DINING
D62	1200	2700	±0.00	2700	M. BEDROOM
D63	1200	2700	±0.00	2700	LIVING/DINING
D64	1200	2700	±0.00	2700	M. BEDROOM
D65	1200	2700	±0.00	2700	LIVING/DINING
D66	1200	2700	±0.00	2700	M. BEDROOM
D67	1200	2700	±0.00	2700	LIVING/DINING
D68	1200	2700	±0.00	2700	M. BEDROOM
D69	1200	2700	±0.00	2700	LIVING/DINING
D70	1200	2700	±0.00	2700	M. BEDROOM
D71	1200	2700	±0.00	2700	LIVING/DINING
D72	1200	2700	±0.00	2700	M. BEDROOM
D73	1200	2700	±0.00	2700	LIVING/DINING
D74	1200	2700	±0.00	2700	M. BEDROOM
D75	1200	2700	±0.00	2700	LIVING/DINING
D76	1200	2700	±0.00	2700	M. BEDROOM
D77	1200	2700	±0.00	2700	LIVING/DINING
D78	1200	2700	±0.00	2700	M. BEDROOM
D79	1200	2700	±0.00	2700	LIVING/DINING
D80	1200	2700	±0.00	2700	M. BEDROOM
D81	1200	2700	±0.00	2700	LIVING/DINING
D82	1200	2700	±0.00	2700	M. BEDROOM
D83	1200	2700	±0.00	2700	LIVING/DINING
D84	1200	2700	±0.00	2700	M. BEDROOM
D85	1200	2700	±0.00	2700	LIVING/DINING
D86	1200	2700	±0.00	2700	M. BEDROOM
D87	1200	2700	±0.00	2700	LIVING/DINING
D88	1200	2700	±0.00	2700	M. BEDROOM
D89	1200	2700	±0.00	2700	LIVING/DINING
D90	1200	2700	±0.00	2700	M. BEDROOM
D91	1200	2700	±0.00	2700	LIVING/DINING
D92	1200	2700	±0.00	2700	M. BEDROOM
D93	1200	2700	±0.00	2700	LIVING/DINING
D94	1200	2700	±0.00	2700	M. BEDROOM
D95	1200	2700	±0.00	2700	LIVING/DINING
D96	1200	2700	±0.00	2700	M. BEDROOM
D97	1200	2700	±0.00	2700	LIVING/DINING
D98	1200	2700	±0.00	2700	M. BEDROOM
D99	1200	2700	±0.00	2700	LIVING/DINING
D100	1200	2700	±0.00	2700	M. BEDROOM



TOWER-1, 28.3 FAR AREA AT UNIT 1 PER FLOOR
(All Distances are in Meter & Areas in Sqm)

ADDITIONS (A)

ITEM	NO.S	WIDTH (MTR.)	LENGTH (MTR.)	AREA(SQ.M) T ₁ = NO.X LENGTH X WIDTH
1C	1	3.900	0.650	2.535
2	1	3.150	4.875	15.356
3	1	7.975	3.075	24.523
4	1	4.100	4.200	17.421
5	1	3.900	0.670	2.613
6A	1	18.925	7.650	144.776
7A	1	3.950	2.200	8.690
8	1	4.100	4.350	17.835
9	1	5.500	1.800	9.900
10	1	3.450	1.950	6.728
TOTAL(A)				245.344

DEDUCTION (B)

ITEM	NO.S	WIDTH (MTR.)	LENGTH (MTR.)	AREA(SQ.M) T ₂ = NO.X LENGTH X WIDTH
S1	1	0.620	0.250	0.156
S2	1	1.225	0.300	0.368
S3	1	0.300	0.725	0.218
S4	1	1.050	0.600	0.630
S5	1	1.050	0.300	0.315
TOTAL				1.686

UNIT-FAR AREA CALCULATION = ADDITION(A) - (DEDUCTION (B))
= 245.344 - 1.686
= 243.658 SQMT

TOWER-3 FAR AREA AT UNIT 2 PER FLOOR
(All Distances are in Meter & Areas in Sqm)

ADDITIONS (A)

ITEM	NO.S	WIDTH (MTR.)	LENGTH (MTR.)	AREA(SQ.M) T ₁ = NO.X LENGTH X WIDTH
1A	0.5	1.250	1.250	0.781
1B	0.667	0.360	1.768	0.432
2	1	3.150	4.875	15.356
3	1	7.975	3.075	24.523
4	1	4.100	4.200	17.421
5	1	3.900	0.670	2.613
6	1	19.100	7.650	146.115
7	1	1.725	2.200	3.795
8	1	4.150	4.350	18.053
9	1	5.500	1.800	9.900
10	1	3.450	1.950	6.728