

**MLCP (1st) Floor Area Calculation**

Area Addition (A1)	Area	Count	Area	Area
A	26.302	X 6.000	X 1	= 157.812 Sqm.
B	10.775	X 6.000	X 1/2	= 31.823 Sqm.
C	49.400	X 93.770	X 1	= 4613.626 Sqm.
D	22.300	X 18.000	X 1	= 399.600 Sqm.
E	32.300	X 41.270	X 1	= 1333.011 Sqm.
F	18.300	X 18.500	X 1/2	= 168.225 Sqm.
G	6.200	X 18.000	X 1	= 111.600 Sqm.
H	12.300	X 18.000	X 1	= 221.400 Sqm.
I	2.850	X 3.070	X 1	= 8.749 Sqm.
J	4.600	X 3.100	X 1	= 14.260 Sqm.
K	37.985	X 7.500	X 1/2	= 142.444 Sqm.
L	6.385	X 8.885	X 1/2	= 28.155 Sqm.
M	120.514	X 1.900	X 1/2	= 114.462 Sqm.
<b>TOTAL</b>				<b>= 8,118.543 Sqm.</b>

**Services Area Addition (S1)**

Area	Count	Area	Area	
S1	4.800	X 6.000	X 3	= 86.400 Sqm.
S2	3.300	X 6.000	X 1	= 19.800 Sqm.
S3	30.300	X 6.000	X 1	= 181.800 Sqm.
S4	26.300	X 6.000	X 1	= 157.800 Sqm.
S5	12.300	X 11.300	X 1/2	= 68.235 Sqm.
S6	32.300	X 2.500	X 3	= 242.250 Sqm.
S7	6.000	X 24.085	X 1	= 144.510 Sqm.
S8	16.200	X 8.250	X 1	= 133.800 Sqm.
S9	4.300	X 6.000	X 1	= 25.800 Sqm.
S10	1.200	X 6.000	X 1	= 7.200 Sqm.
S11	3.400	X 11.100	X 1	= 37.740 Sqm.
S12	26.000	X 6.000	X 1	= 156.000 Sqm.
S13	18.500	X 18.500	X 1/2	= 170.625 Sqm.
S14	1.300	X 12.000	X 1	= 15.600 Sqm.
S15	6.300	X 18.000	X 1	= 113.400 Sqm.
S16	12.500	X 6.000	X 1	= 75.000 Sqm.
S17	12.500	X 6.000	X 1	= 75.000 Sqm.
S18	7.250	X 3.070	X 3	= 66.263 Sqm.
S19	16.800	X 6.000	X 1	= 100.800 Sqm.
S20	16.200	X 6.400	X 1	= 103.680 Sqm.
S21	16.200	X 6.400	X 1	= 103.680 Sqm.
S22	11.150	X 11.150	X 1	= 124.308 Sqm.
<b>TOTAL</b>				<b>= 2,558.218 Sqm.</b>

**1st Floor Area Calculation Summary**

Category	Area	Area
Total Non-FAR Area on 1st Floor (A1-S1)		<b>= 7,882.824 Sqm.</b>
Total Services Area on 1st Floor (S1-S22)		<b>= 2,117.471 Sqm.</b>
Total Parking Area on 1st Floor		<b>= 4,965.250 Sqm.</b>

**Cut-out Area Deduction (B1)**

Area	Count	Area	Area	
B1	2.000	X 1.500	X 2	= 6.000 Sqm.
B2	8.000	X 1.500	X 1	= 12.000 Sqm.
B3	0.500	X 1.500	X 2	= 1.500 Sqm.
B4	2.300	X 1.500	X 1	= 3.450 Sqm.
B5	8.000	X 1.500	X 1	= 12.000 Sqm.
B6	4.300	X 1.500	X 1	= 6.450 Sqm.
B7	2.750	X 1.500	X 1	= 4.125 Sqm.
B8	2.000	X 1.500	X 1	= 3.000 Sqm.
B9	2.000	X 1.500	X 1	= 3.000 Sqm.
B10	2.000	X 1.500	X 1	= 3.000 Sqm.
B11	2.000	X 1.500	X 1	= 3.000 Sqm.
B12	2.000	X 1.500	X 1	= 3.000 Sqm.
B13	2.000	X 1.500	X 1	= 3.000 Sqm.
B14	2.000	X 1.500	X 1	= 3.000 Sqm.
B15	2.000	X 1.500	X 1	= 3.000 Sqm.
B16	2.000	X 1.500	X 1	= 3.000 Sqm.
B17	2.000	X 1.500	X 1	= 3.000 Sqm.
B18	2.000	X 1.500	X 1	= 3.000 Sqm.
B19	2.000	X 1.500	X 1	= 3.000 Sqm.
B20	2.000	X 1.500	X 1	= 3.000 Sqm.
B21	2.000	X 1.500	X 1	= 3.000 Sqm.
B22	2.000	X 1.500	X 1	= 3.000 Sqm.
B23	2.000	X 1.500	X 1	= 3.000 Sqm.
B24	2.000	X 1.500	X 1	= 3.000 Sqm.
B25	2.000	X 1.500	X 1	= 3.000 Sqm.
B26	2.000	X 1.500	X 1	= 3.000 Sqm.
B27	2.000	X 1.500	X 1	= 3.000 Sqm.
B28	2.000	X 1.500	X 1	= 3.000 Sqm.
B29	2.000	X 1.500	X 1	= 3.000 Sqm.
B30	2.000	X 1.500	X 1	= 3.000 Sqm.
B31	2.000	X 1.500	X 1	= 3.000 Sqm.
B32	2.000	X 1.500	X 1	= 3.000 Sqm.
B33	2.000	X 1.500	X 1	= 3.000 Sqm.
B34	2.000	X 1.500	X 1	= 3.000 Sqm.
B35	2.000	X 1.500	X 1	= 3.000 Sqm.
B36	2.000	X 1.500	X 1	= 3.000 Sqm.
B37	2.000	X 1.500	X 1	= 3.000 Sqm.
B38	2.000	X 1.500	X 1	= 3.000 Sqm.
B39	2.000	X 1.500	X 1	= 3.000 Sqm.
B40	2.000	X 1.500	X 1	= 3.000 Sqm.
B41	2.000	X 1.500	X 1	= 3.000 Sqm.
<b>TOTAL</b>				<b>= 440.745 Sqm.</b>

This is a PROVISIONAL BUILDING PLAN approved by the Department of Urban Development, Government of Karnataka.

Sanctions Issued by: *[Signature]*  
 Date: 20/08/2024

Architect: *[Signature]*  
 Designplus Architecture

- NOTE:**
1. BUILDING WILL BE DESIGNED (STRUCTURES) AS PER RELEVANT IS CODES FOR EARTH QUAKE RESISTANCE.
  2. THE BUILDING IS ARTIFICIALLY LIT AND MECHANICALLY VENTILATED.
  3. 100% POWER BACKUP WILL BE PROVIDED FOR COMMON AREA EMERGENCY SERVICES.
  4. ALL HANDICAP RAMP WILL BE PROVIDED WITH 1.0M HEIGHT RAILING.

**LEGEND:**

**ARCHITECT**  
 Designplus Architecture  
 ADD: Unit-129, First Floor, Vignya Agave Mall  
 MG Road, Gurugram, Haryana, India  
 TEL: +91 124 - 4684300  
 EMAIL: info@dpac.co.in  
 PRINCIPAL CONSULTANT: Sohrab Datal

**CLIENT**  
 LANDMARK APARTMENTS  
 PVT. LTD.

**PROJECT TITLE**  
 REVISED BUILDING PLANS FOR IT PARK, PHASE-2, AREA MEASURING 8.3125 ACRES (LICENSE NO. 97 OF 2008 DATED 12.05.2008) IN SECTOR-67, GURUGRAM BEING DEVELOPED BY LANDMARK APARTMENTS PVT. LTD.

**ARCHITECT'S SIGNATURE**  
*[Signature]*  
 S. P. SINGH  
 C-20003/1298

**OWNER'S SIGNATURE**  
*[Signature]*  
 For Landmark Apartments Pvt. Ltd.  
 Authorised Signatory

**DRAWING TITLE**  
 1st Floor Plan with Area Calculation to Health & Safety Code  
 MLCP PARKING FLOOR  
 In accordance with the 264.713, 26.14/4/5

**DRAWING NO.** AR-03  
**SCALE** 1:200  
**DATE** 20/08/2024  
**SHEET SIZE** A0  
**SHEET NO.** 08

**SANITARY LEGEND-**

SYMBOL	DESCRIPTION
1	(S.P.) 110Ø SOIL PIPE
2	(W.P.) 110Ø WASTE PIPE
3	(V.P.) 75Ø VENT PIPE
4	(R.W.P.) 160Ø RAIN WATER PIPE
5	(R.D.P.) 110Ø REFUGE FLOOR DRAIN PIPE
6	(DWS) DOMESTIC WATER SUPPLY PIPE
7	(FWS) FLUSHING WATER SUPPLY PIPE
8	(FWR) FLUSHING WATER SUPPLY RISER
9	(DWR) DOMESTIC WATER SUPPLY RISER

**WATER SUPPLY LEGEND-**

SYMBOL	DESCRIPTION
---	LEDGE WALL
---	SOIL PIPE
---	WASTE PIPE
---	DOMESTIC WATER SUPPLY
---	FLUSHING WATER SUPPLY
FT	FLOOR P-TRAP
FD	FLOOR DRAIN
UT	FLOOR CUT-OUT 150x150 MM
○	BALL VALVE

**DOOR WINDOW SCHEDULE**

TYPE	DOOR SIZE (MASHRY OPENING)	QTY	LEVEL	LEVEL	LOCATION
<b>FIRE DOORS</b>					
FD01	1200X2100	0	2100	STAIRCASES, FIRE TOWER,	
FD02	1500X2100	0	2100	OFFICE DOOR	
FD03	1500X2100	0	2100	LIFT LOBBY	
FD04	1200X2100	0	2100	OFFICE DOOR	
FD05	1200X2100	0	2100	FAN ROOM, STORE ROOM, IT ROOM	
FD06	1500X2100	0	2100	ANU ROOM	
FD07	1800X2100	0	2700	LT PANEL ROOM, HT PANEL ROOM, AIR WASHER ROOM, HOT WATER SYSTEM	
FD08	3000X3000	0	3000	TRANSFORMER ROOM, DG ROOM	
FD09	2700X3000	0	3000	HVAC PLANT ROOM	
FD10	1800X2400	0	2400	PLUMBING, FIRE PUMP ROOM, STP ROOM	
FD11	1000X2100	0	2100	ELECTRICAL ROOM	
FD12	1000X2100	0	2100	TOILETS	
FD13	900X2100	0	2100	FHC	
DD1	1500X2100	0	2100	OFFICE DOORS	
DD2	1200X2100	0	2100	OFFICE DOORS	
DD3	1000X2100	0	2100	TOILETS	
DD4	600X2100	0	2100	TOILET PARTITION	

Note: All Fire doors are 2hr. Fire rated

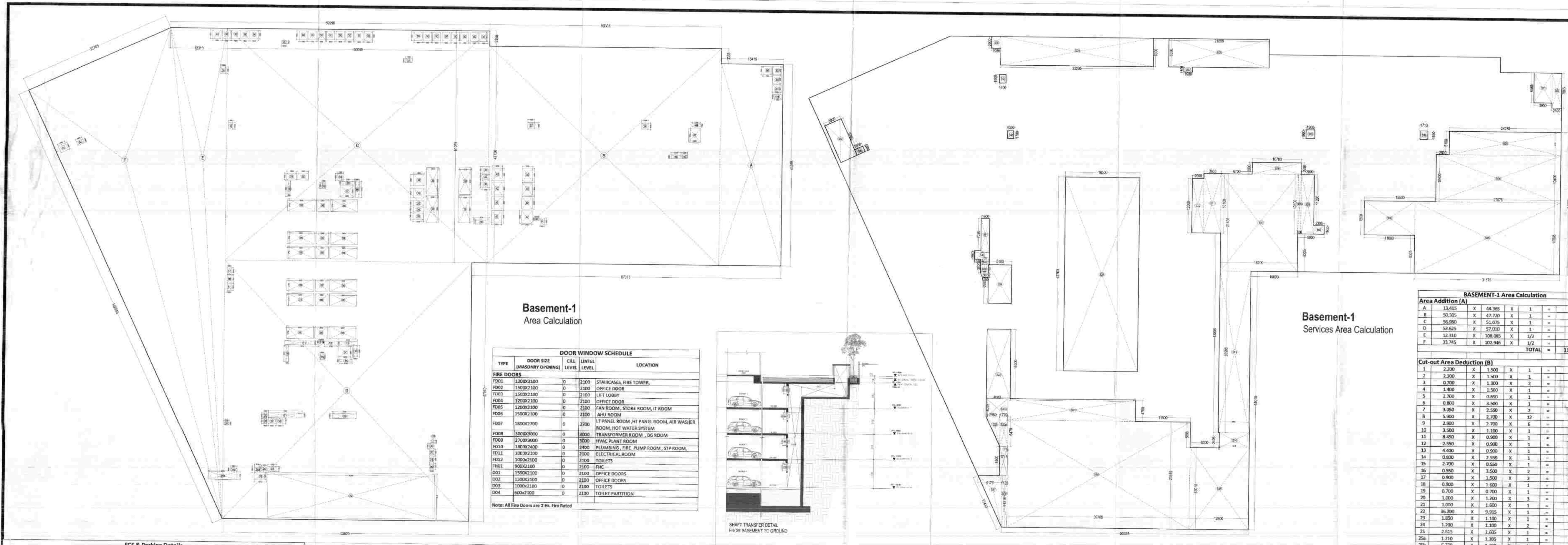
**ECS & Parking Details**

Particular	Parking Norms	Services Area	Parking Area	Total Area	Permissible ECS	Parking Provided
<b>Existing Block</b>						
Basement-1	32 Sqmt / Car	998.375	7,287.060	8,285.435	228	210
Basement-2	32 Sqmt / Car	1,000.077	7,257.423	8,257.500	227	188
Basement-3	32 Sqmt / Car	581.107	7,676.393	8,257.500	240	212
<b>Total</b>		<b>2,579.559</b>	<b>22,220.876</b>	<b>24,800.435</b>	<b>695</b>	<b>610</b>
<b>New Proposed</b>						
MLCP Level -7	32 Sqmt / Car	3,234.281	5,207.672	8,441.953	363	345
MLCP Level -6	32 Sqmt / Car	3,242.442	5,144.708	8,387.150	363	345
MLCP Level -5	32 Sqmt / Car	3,242.442	5,144.708	8,387.150	363	345
MLCP Level -4	32 Sqmt / Car	3,242.442	5,144.708	8,387.150	363	345
MLCP Level -3	32 Sqmt / Car	3,242.442	5,144.708	8,387.150	363	345
MLCP Level -2	32 Sqmt / Car	3,242.442	5,144.708	8,387.150	363	345
MLCP Level -1	32 Sqmt / Car	2,117.471	4,965.300	7,082.771	355	344
<b>Total</b>		<b>9,788.961</b>	<b>36,494.103</b>	<b>46,283.065</b>	<b>1,443</b>	<b>1,364</b>
<b>TOTAL</b>		<b>26,735.768</b>	<b>86,200.699</b>	<b>112,936.467</b>	<b>2,695</b>	<b>2,399</b>





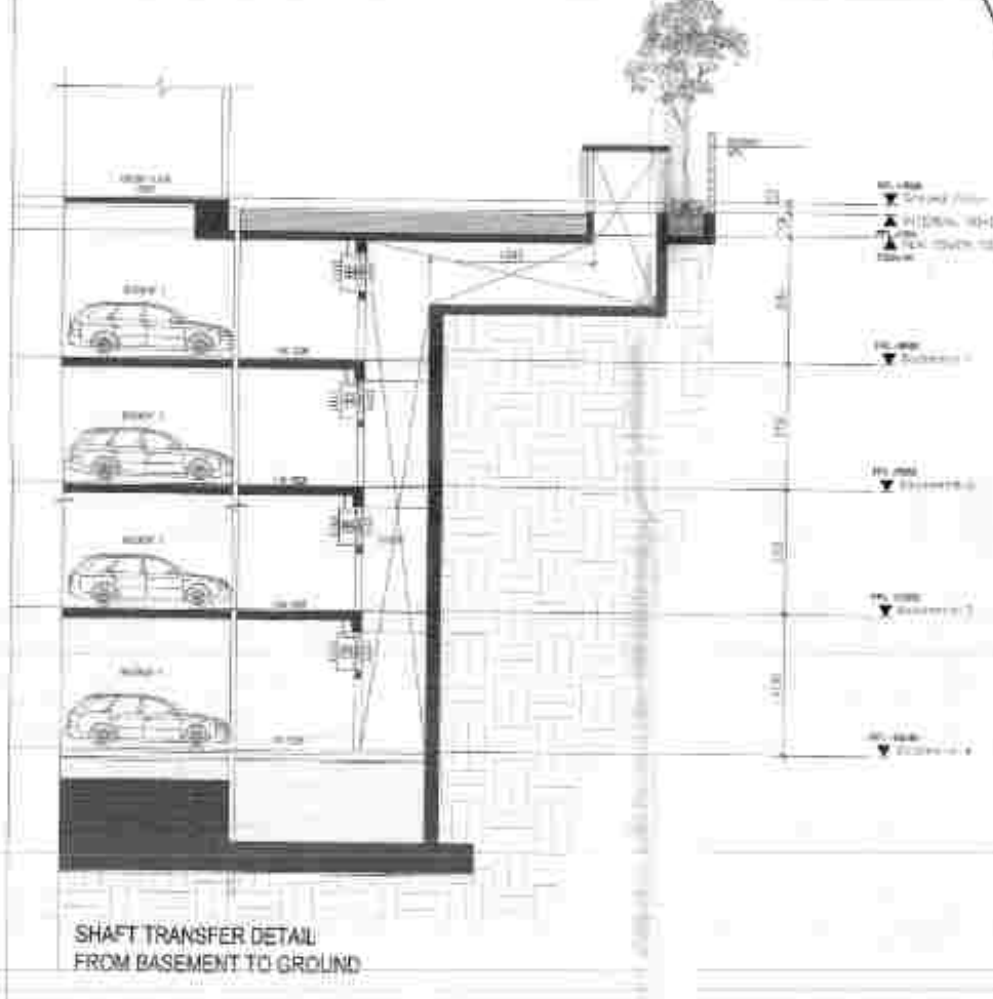




Basement-1 Area Calculation

TYPE	DOOR SIZE	DOOR WINDOW SCHEDULE	CILL LEVEL	LUNTEL LEVEL	LOCATION
<b>FIRE DOORS</b>					
FD01	1200x2100	0	2100	2100	STAIRCASE, FIRE TOWER,
FD02	1200x2100	0	2100	2100	OFFICE DOOR
FD03	1200x2100	0	2100	2100	LIFT LOBBY
FD04	1200x2100	0	2100	2100	OFFICE DOOR
FD05	1200x2100	0	2100	2100	LAN ROOM, STORE ROOM, IT ROOM
FD06	1500x2100	0	2100	2100	AIR ROOM
FD07	1800x2100	0	2100	2100	IT PANEL ROOM, JIT PANEL ROOM, AIR WASHER ROOM, HOT WATER SYSTEM
FD08	2000x3000	0	3000	3000	TRANSFORMER ROOM, DG ROOM
FD09	2700x3000	0	3000	3000	HVAC PLANT ROOM
FD10	1800x2400	0	2400	2400	PLUMBING, FIRE PUMP ROOM, STP ROOM
FD11	1000x2100	0	2100	2100	ELECTRICAL ROOM
FD12	1000x2100	0	2100	2100	TOILETS
FD13	1000x2100	0	2100	2100	TOILETS
FD14	1500x2100	0	2100	2100	OFFICE DOORS
FD15	1200x2100	0	2100	2100	OFFICE DOORS
FD16	1000x2100	0	2100	2100	TOILETS
FD17	1000x2100	0	2100	2100	TOILET PARTITION

Note: All Fire Doors are 2 Hr. Fire Rated



Basement-1 Services Area Calculation

Basement-1 Area Calculation							
Area Addition (A)							
A	18.415	X	44.365	X	1	=	596.156 Sqm.
B	50.305	X	47.730	X	1	=	2400.503 Sqm.
C	56.880	X	24.075	X	1	=	2934.240 Sqm.
D	58.625	X	57.010	X	1	=	3342.188 Sqm.
E	12.310	X	108.085	X	1/2	=	665.263 Sqm.
F	18.745	X	103.046	X	1/2	=	1736.660 Sqm.
<b>TOTAL</b>							<b>11,965.347 Sqm.</b>

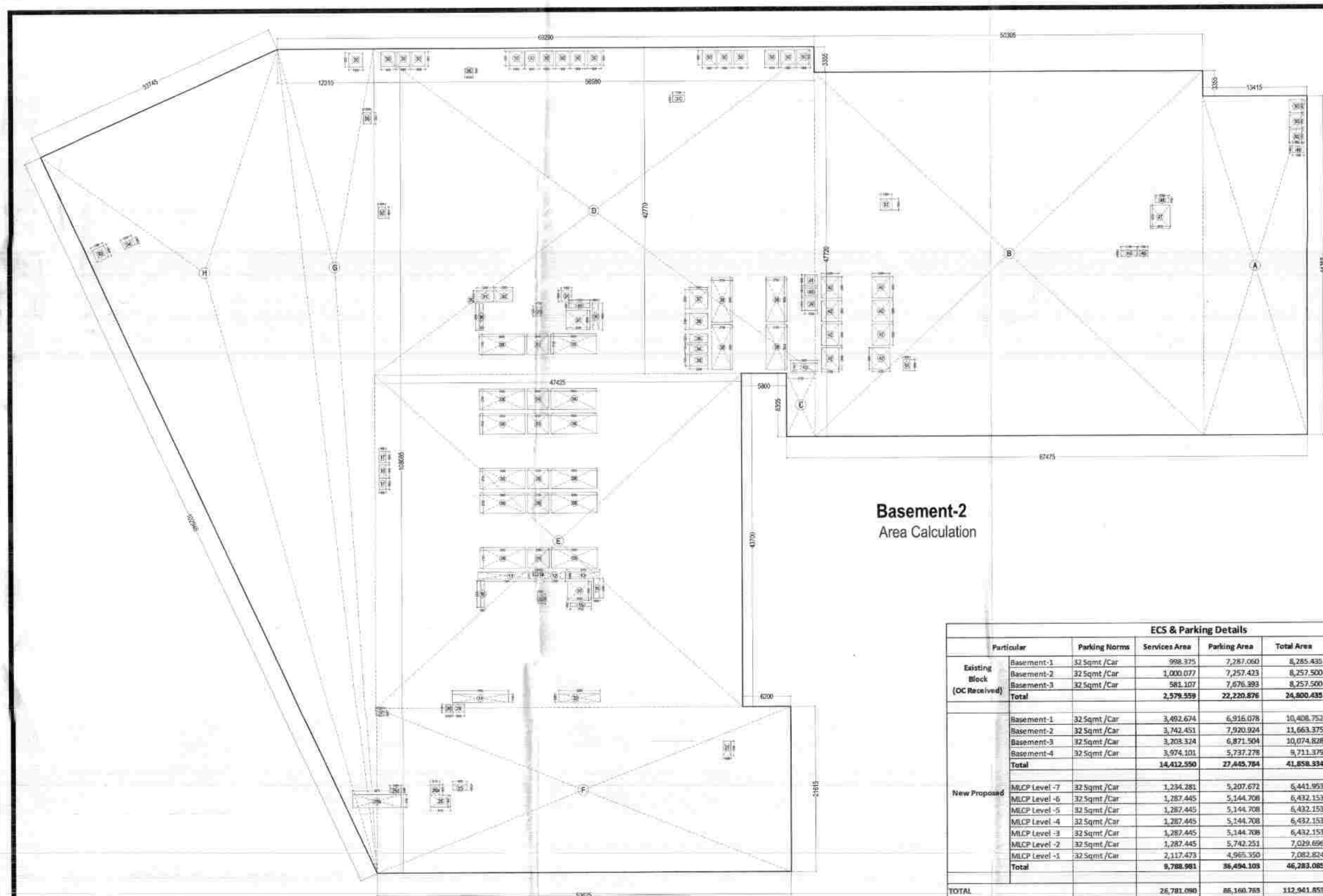
Cut-out Area Deduction (B)							
1	2.200	X	1.500	X	1	=	3.300 Sqm.
2	2.300	X	1.500	X	1	=	3.450 Sqm.
3	0.700	X	1.500	X	1	=	1.050 Sqm.
4	1.400	X	1.500	X	1	=	2.100 Sqm.
5	2.700	X	0.600	X	1	=	1.620 Sqm.
6	0.800	X	3.500	X	1	=	2.800 Sqm.
7	3.000	X	2.500	X	2	=	15.000 Sqm.
8	5.800	X	2.300	X	1/2	=	1315.180 Sqm.
9	2.800	X	2.700	X	6	=	45.360 Sqm.
10	3.500	X	1.500	X	1	=	5.250 Sqm.
11	8.400	X	0.900	X	1	=	7.560 Sqm.
12	2.500	X	0.900	X	1	=	2.250 Sqm.
13	4.400	X	0.900	X	1	=	3.960 Sqm.
14	0.900	X	2.500	X	1	=	2.250 Sqm.
15	2.700	X	0.550	X	1	=	1.485 Sqm.
16	0.500	X	3.500	X	2	=	3.500 Sqm.
17	0.900	X	1.500	X	2	=	2.700 Sqm.
18	0.900	X	1.600	X	1	=	1.440 Sqm.
19	0.700	X	0.700	X	3	=	1.470 Sqm.
20	1.000	X	1.700	X	3	=	5.100 Sqm.
21	1.000	X	1.600	X	1	=	1.600 Sqm.
22	36.200	X	1.615	X	1	=	586.832 Sqm.
23	1.850	X	1.100	X	1	=	2.035 Sqm.
24	1.300	X	1.300	X	2	=	3.360 Sqm.
25	2.615	X	1.400	X	1	=	3.661 Sqm.
25a	1.310	X	1.395	X	1	=	1.828 Sqm.
25b	4.270	X	1.200	X	1	=	5.124 Sqm.
25c	1.455	X	0.600	X	1	=	0.873 Sqm.
26	0.650	X	1.000	X	1	=	0.650 Sqm.
27	1.100	X	0.600	X	1	=	0.660 Sqm.
28	0.650	X	1.100	X	1	=	0.715 Sqm.
29	1.550	X	1.100	X	1	=	1.705 Sqm.
30	1.400	X	1.100	X	1	=	1.540 Sqm.
31	2.300	X	1.000	X	1	=	2.300 Sqm.
32	3.300	X	1.000	X	1	=	3.300 Sqm.
33	2.300	X	1.500	X	1	=	3.450 Sqm.
34	2.300	X	1.100	X	1	=	2.530 Sqm.
35	2.800	X	1.300	X	1	=	3.640 Sqm.
36	2.700	X	2.100	X	1	=	5.670 Sqm.
37	3.300	X	2.500	X	1	=	8.250 Sqm.
38	3.200	X	1.500	X	1	=	4.800 Sqm.
39	3.700	X	1.700	X	1	=	6.290 Sqm.
40	1.700	X	1.100	X	1	=	1.870 Sqm.
41	3.700	X	1.500	X	1	=	5.550 Sqm.
42	2.250	X	2.800	X	8	=	50.400 Sqm.
43	1.000	X	0.500	X	1	=	0.500 Sqm.
44	1.900	X	1.100	X	1	=	2.090 Sqm.
45	2.100	X	0.800	X	1	=	1.680 Sqm.
46	1.300	X	0.800	X	1	=	1.040 Sqm.
47	1.500	X	0.300	X	1	=	0.450 Sqm.
48	1.750	X	0.750	X	1	=	1.313 Sqm.
49	1.500	X	0.800	X	1	=	1.200 Sqm.
50	1.800	X	1.800	X	1	=	3.240 Sqm.
51	1.500	X	0.900	X	1	=	1.350 Sqm.
52	1.100	X	1.200	X	1	=	1.320 Sqm.
53	1.700	X	1.600	X	1	=	2.720 Sqm.
54	1.500	X	0.900	X	1	=	1.350 Sqm.
55	1.000	X	1.500	X	1	=	1.500 Sqm.
56	1.025	X	0.600	X	1	=	0.615 Sqm.
57	1.500	X	1.500	X	1	=	2.250 Sqm.
58	1.900	X	1.400	X	1	=	2.660 Sqm.
<b>TOTAL</b>							<b>958.595 Sqm.</b>

Services Area addition (C)							
51	3.950	X	6.560	X	1	=	25.912 Sqm.
52	2.100	X	2.600	X	1	=	5.460 Sqm.
53	24.275	X	5.100	X	1	=	123.803 Sqm.
54	27.075	X	10.400	X	1	=	281.580 Sqm.
55	21.575	X	16.800	X	1	=	362.280 Sqm.
56	11.000	X	2.500	X	1	=	27.500 Sqm.
57	2.900	X	1.900	X	3	=	16.350 Sqm.
58	2.800	X	13.100	X	1/2	=	36.660 Sqm.
58a	0.700	X	13.100	X	1	=	9.170 Sqm.
59	10.700	X	7.000	X	3	=	22.830 Sqm.
60	10.700	X	21.400	X	1	=	229.140 Sqm.
61	3.800	X	13.100	X	1	=	49.780 Sqm.
62	2.500	X	12.000	X	1	=	30.000 Sqm.
63	6.700	X	9.100	X	1	=	60.947 Sqm.
64	6.500	X	1.425	X	1	=	9.263 Sqm.
65	12.800	X	10.015	X	1	=	128.128 Sqm.
66	39.700	X	23.610	X	1	=	937.817 Sqm.
67	5.175	X	10.440	X	1/2	=	27.089 Sqm.
68	1.125	X	13.215	X	1	=	14.867 Sqm.
69	1.715	X	6.500	X	1	=	11.146 Sqm.
70	2.950	X	7.215	X	1/2	=	10.539 Sqm.
71	11.770	X	6.420	X	1	=	75.718 Sqm.
72	4.600	X	4.025	X	1	=	18.817 Sqm.
73	27.000	X	4.700	X	1	=	126.660 Sqm.
74	5.300	X	13.300	X	1	=	70.410 Sqm.
75	5.100	X	8.500	X	3	=	43.350 Sqm.
75a	(1.200x1.000)	X	2.000	X	1/2	=	3.000 Sqm.
75b	(1.200x1.000)	X	1.000	X	1/2	=	1.500 Sqm.
76	16.200	X	42.700	X	1	=	691.740 Sqm.
77	1.900	X	6.300	X	1	=	12.150 Sqm.
78	1.900	X	3.100	X	1	=	5.890 Sqm.
79	33.200	X	6.300	X	1	=	209.332 Sqm.
80	2.000	X	2.000	X	1	=	4.000 Sqm.
81	1.900	X	1.900	X	1	=	3.610 Sqm.
82	1.900	X	1.900	X	1	=	3.610 Sqm.
83	1.900	X	1.900	X	1	=	3.610 Sqm.
84	1.900	X	1.900	X	1	=	3.610 Sqm.
85	1.900	X	1.900	X	1	=	3.610 Sqm.
86	1.900	X	1.900	X	1	=	3.610 Sqm.
87	(1.200x1.000)	X	2.000	X	1/2	=	3.000 Sqm.
88	1.900	X	1.900	X	1	=	3.610 Sqm.
89	1.900	X	1.900	X	1	=	3.610 Sqm.
90	1.900	X	1.900	X	1	=	3.610 Sqm.
91	1.900	X	1.900	X	1	=	3.610 Sqm.
92	1.900	X	1.900	X	1	=	3.610 Sqm.
93	1.900	X	1.900	X	1	=	3.610 Sqm.
94	1.900	X	1.900	X	1	=	3.610 Sqm.
95	1.900	X	1.900	X	1	=	3.610 Sqm.
96	1.900	X	1.900	X	1	=	3.610 Sqm.
97	1.900	X	1.900	X	1	=	3.610 Sqm.
98	1.900	X	1.900	X	1	=	3.610 Sqm.
99	1.900	X	1.900	X	1	=	3.610 Sqm.
100	1.900	X	1.900	X	1	=	3.610 Sqm.
<b>TOTAL</b>							<b>4449.270 Sqm.</b>

Total Non-FAR Area of Basement-1 (A-B)	=	10,408.752 Sqm.
Total Services Area of Basement-1 (C-B)	=	3,492.674 Sqm.
Total Parking Area of Basement-1	=	6,916.078 Sqm.

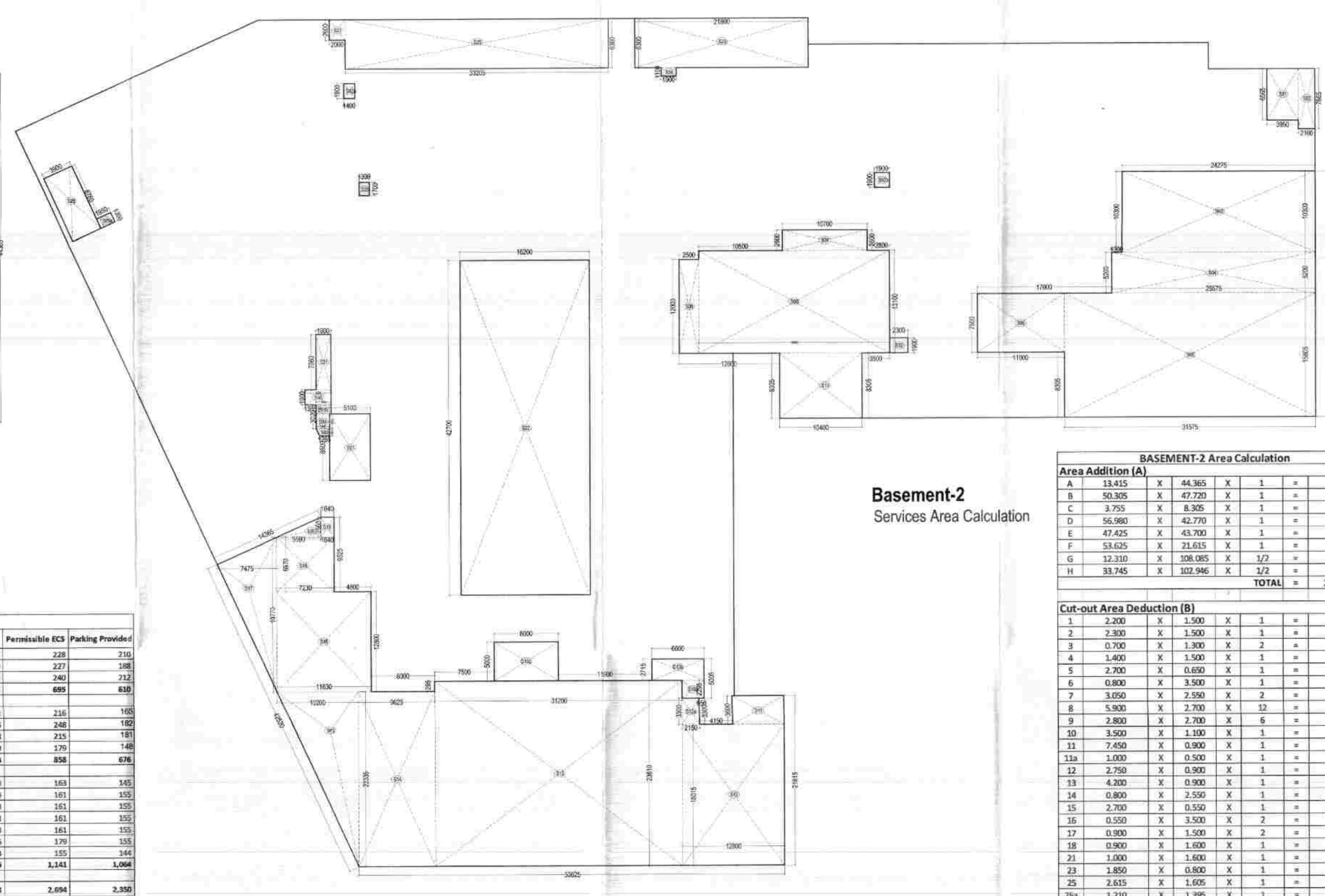
SANITARY LEGEND		WATER SUPPLY LEGEND	
SYMBOL	DESCRIPTION	SYMBOL	DESCRIPTION
1	(S.P.) 1100 SOIL PIPE	1	LEAD WALL
2	(W.P.) 1100 WASTE PIPE	2	SOIL PIPE
3	(V.P.) 750 VENT PIPE	3	WASTE PIPE
4	(R.W.P.) 1600 RAIN WATER PIPE	4	DOMESTIC WATER SUPPLY
5	(R.D.P.) 1100 REFUGEE FLOOR DRAIN PIPE	5	FRESHING WATER SUPPLY
6	(D.W.P.) DOMESTIC WATER SUPPLY PIPE	6	FLOOR P-TRAP
7	(F.W.P.) FRESHING WATER SUPPLY PIPE	7	FLOOR P-TRAP
8	(U.P.) FLOOR URINAL P-TRAP	8	URINAL P-TRAP
9	(D.W.P.) DOMESTIC WATER SUPPLY RISER	9	FLOOR CUTOUT 150x110 MM
		10	WALL VALVE

ECS & Parking Details						
Particular	Parking Norms	Services Area	Parking Area	Total Area	Permissible ECS	Parking Provided
Existing Block (OC Received)						
Basement-1	32 Spmt./Car	908.375	7,207.000	8,265.435	225	225
Basement-2	32 Spmt./Car	1,000.077	7,207.421	8,257.500	247	189
Basement-3	32 Spmt./Car	581.207				



Basement-2  
Area Calculation

Particular	Parking Norms	Services Area	Parking Area	Total Area	Permissible ECS	Parking Provided
Existing Block (OC Received)						
Basement-1	32 Sqmt /Car	998.875	7,287.060	8,285.935	228	216
Basement-2	32 Sqmt /Car	1,000.077	7,257.425	8,257.502	227	198
Basement-3	32 Sqmt /Car	961.077	7,076.393	8,037.470	224	213
<b>Total</b>		<b>2,959.959</b>	<b>22,220.878</b>	<b>25,180.836</b>	<b>685</b>	<b>627</b>
New Proposed						
Basement-1	32 Sqmt /Car	3,602.074	6,916.078	10,518.152	216	160
Basement-2	32 Sqmt /Car	3,742.403	7,920.394	11,662.797	248	180
Basement-3	32 Sqmt /Car	3,203.134	6,871.584	10,074.718	213	160
Basement-4	32 Sqmt /Car	3,074.101	5,737.278	8,811.379	179	148
<b>Total</b>		<b>14,622.712</b>	<b>27,445.734</b>	<b>42,068.446</b>	<b>676</b>	<b>608</b>
MCCP Level-1	32 Sqmt /Car	1,234.281	5,207.672	6,441.953	183	153
MCCP Level-2	32 Sqmt /Car	1,287.445	5,144.208	6,431.653	181	150
MCCP Level-3	32 Sqmt /Car	1,287.445	5,144.208	6,431.653	181	150
MCCP Level-4	32 Sqmt /Car	1,287.445	5,144.208	6,431.653	181	150
MCCP Level-5	32 Sqmt /Car	1,287.445	5,144.208	6,431.653	181	150
MCCP Level-6	32 Sqmt /Car	1,287.445	5,144.208	6,431.653	181	150
MCCP Level-7	32 Sqmt /Car	1,287.445	5,144.208	6,431.653	181	150
MCCP Level-8	32 Sqmt /Car	1,287.445	5,144.208	6,431.653	181	150
MCCP Level-9	32 Sqmt /Car	1,287.445	5,144.208	6,431.653	181	150
MCCP Level-10	32 Sqmt /Car	1,287.445	5,144.208	6,431.653	181	150
<b>Total</b>		<b>12,800.000</b>	<b>51,840.000</b>	<b>64,640.000</b>	<b>360</b>	<b>300</b>
<b>TOTAL</b>		<b>24,782.671</b>	<b>86,146.712</b>	<b>110,929.383</b>	<b>1,345</b>	<b>1,227</b>



Basement-2  
Services Area Calculation

Area Addition (A)	Area Addition (B)
A 13.415 X 44.805 X 1 = 596.156 Sqmt.	1 2.200 X 1.500 X 1 = 3.300 Sqmt.
B 50.305 X 47.720 X 1 = 2400.255 Sqmt.	2 2.300 X 1.500 X 1 = 3.450 Sqmt.
C 3.725 X 8.305 X 1 = 31.185 Sqmt.	3 0.700 X 1.000 X 1 = 0.700 Sqmt.
D 56.980 X 42.770 X 1 = 2437.039 Sqmt.	4 1.400 X 1.500 X 1 = 2.100 Sqmt.
E 47.425 X 43.700 X 1 = 2072.472 Sqmt.	5 2.700 X 0.600 X 1 = 1.620 Sqmt.
F 53.625 X 21.615 X 1 = 1158.104 Sqmt.	6 0.800 X 3.500 X 1 = 2.800 Sqmt.
G 12.310 X 108.085 X 1/2 = 665.263 Sqmt.	7 3.050 X 2.000 X 2 = 12.200 Sqmt.
H 33.245 X 102.946 X 1/2 = 1718.916 Sqmt.	8 5.800 X 2.700 X 12 = 191.160 Sqmt.
<b>TOTAL = 11,097.729 Sqmt.</b>	9 2.800 X 2.700 X 6 = 45.360 Sqmt.

Cut-out Area Deduction (B)
1 2.200 X 1.500 X 1 = 3.300 Sqmt.
2 2.300 X 1.500 X 1 = 3.450 Sqmt.
3 0.700 X 1.000 X 1 = 0.700 Sqmt.
4 1.400 X 1.500 X 1 = 2.100 Sqmt.
5 2.700 X 0.600 X 1 = 1.620 Sqmt.
6 0.800 X 3.500 X 1 = 2.800 Sqmt.
7 3.050 X 2.000 X 2 = 12.200 Sqmt.
8 5.800 X 2.700 X 12 = 191.160 Sqmt.
9 2.800 X 2.700 X 6 = 45.360 Sqmt.
10 3.800 X 1.500 X 1 = 5.700 Sqmt.
11 7.450 X 0.900 X 1 = 6.705 Sqmt.
12 2.700 X 0.500 X 1 = 1.350 Sqmt.
13 4.200 X 0.900 X 1 = 3.780 Sqmt.
14 0.800 X 2.500 X 1 = 2.000 Sqmt.
15 2.700 X 0.500 X 1 = 1.350 Sqmt.
16 0.500 X 3.500 X 2 = 3.500 Sqmt.
17 0.800 X 1.500 X 2 = 2.400 Sqmt.
18 1.200 X 1.500 X 1 = 1.800 Sqmt.
19 1.000 X 1.600 X 1 = 1.600 Sqmt.
20 1.800 X 0.800 X 1 = 1.440 Sqmt.
21 2.615 X 1.000 X 1 = 2.615 Sqmt.
22 1.210 X 1.300 X 1 = 1.573 Sqmt.
23 6.270 X 1.700 X 1 = 10.659 Sqmt.
24 1.485 X 0.800 X 1 = 1.188 Sqmt.
25 1.000 X 1.000 X 1 = 1.000 Sqmt.
26 1.150 X 0.650 X 1 = 0.748 Sqmt.
27 0.650 X 1.100 X 1 = 0.715 Sqmt.
28 1.500 X 1.100 X 1 = 1.650 Sqmt.
29 2.300 X 1.100 X 1 = 2.530 Sqmt.
30 2.300 X 1.100 X 1 = 2.530 Sqmt.
31 2.300 X 1.050 X 1 = 2.415 Sqmt.
32 2.300 X 1.050 X 1 = 2.415 Sqmt.
33 2.300 X 1.000 X 1 = 2.300 Sqmt.
34 2.300 X 1.100 X 1 = 2.530 Sqmt.
35 2.300 X 1.100 X 1 = 2.530 Sqmt.
36 2.300 X 1.100 X 1 = 2.530 Sqmt.
37 2.300 X 1.100 X 1 = 2.530 Sqmt.
38 2.700 X 5.900 X 4 = 63.720 Sqmt.
39 1.700 X 1.700 X 8 = 23.160 Sqmt.
40 1.700 X 1.100 X 1 = 1.870 Sqmt.
41 1.700 X 1.100 X 1 = 1.870 Sqmt.
42 2.250 X 2.000 X 8 = 36.000 Sqmt.
43 2.100 X 0.800 X 1 = 1.680 Sqmt.
44 1.200 X 0.800 X 1 = 0.960 Sqmt.
45 2.500 X 0.700 X 1 = 1.750 Sqmt.
46 1.500 X 0.800 X 1 = 1.200 Sqmt.
47 1.500 X 0.800 X 1 = 1.200 Sqmt.
48 1.500 X 0.800 X 1 = 1.200 Sqmt.
49 1.500 X 0.800 X 1 = 1.200 Sqmt.
50 1.500 X 0.800 X 1 = 1.200 Sqmt.
51 1.500 X 0.800 X 1 = 1.200 Sqmt.
52 0.800 X 1.200 X 1 = 0.960 Sqmt.
53 1.200 X 1.600 X 1 = 1.920 Sqmt.
54 1.500 X 0.800 X 1 = 1.200 Sqmt.
55 1.000 X 1.500 X 1 = 1.500 Sqmt.
56 1.000 X 0.800 X 1 = 0.800 Sqmt.
57 1.500 X 1.500 X 1 = 2.250 Sqmt.
58 0.900 X 1.500 X 1 = 1.350 Sqmt.
<b>TOTAL = 565.645 Sqmt.</b>

Services Area addition (C)
51 3.950 X 6.505 X 1 = 25.712 Sqmt.
52 2.100 X 7.600 X 1 = 16.070 Sqmt.
53 24.275 X 10.300 X 1 = 250.033 Sqmt.
54 25.575 X 5.200 X 1 = 133.095 Sqmt.
55 31.975 X 15.805 X 1 = 505.040 Sqmt.
56 11.000 X 7.500 X 1 = 82.500 Sqmt.
57 10.700 X 2.600 X 1 = 27.820 Sqmt.
58 2.500 X 12.000 X 1 = 30.000 Sqmt.
59 24.000 X 13.100 X 1 = 314.400 Sqmt.
60 10.400 X 8.305 X 1 = 86.372 Sqmt.
61 5.500 X 3.600 X 1 = 19.800 Sqmt.
62 12.800 X 18.015 X 1 = 230.592 Sqmt.
63 2.150 X 3.300 X 1 = 7.095 Sqmt.
64 31.300 X 23.610 X 1 = 739.610 Sqmt.
65 2.800 X 2.295 X 1 = 6.426 Sqmt.
66 6.600 X 2.715 X 1 = 17.919 Sqmt.
67 8.600 X 9.000 X 1 = 77.400 Sqmt.
68 9.625 X 22.335 X 1 = 214.976 Sqmt.
69 10.200 X 22.335 X 1/2 = 113.990 Sqmt.
70 11.850 X 12.800 X 1 = 151.680 Sqmt.
71 7.475 X 19.770 X 1/2 = 73.850 Sqmt.
72 7.230 X 6.970 X 1 = 50.391 Sqmt.
73 1.640 X 2.500 X 1 = 4.100 Sqmt.
74 5.500 X 1.500 X 1/2 = 4.125 Sqmt.
75 5.100 X 8.500 X 1 = 43.350 Sqmt.
76 21.800 X 6.300 X 1 = 137.340 Sqmt.
77 1.900 X 1.100 X 1 = 2.090 Sqmt.
78 33.225 X 6.300 X 1 = 209.235 Sqmt.
79 2.000 X 2.000 X 1 = 4.000 Sqmt.
80 1.300 X 1.700 X 1 = 2.210 Sqmt.
81 3.000 X 8.700 X 1 = 26.100 Sqmt.
82 1.500 X 1.300 X 1 = 1.950 Sqmt.
83 2.300 X 1.900 X 1 = 4.370 Sqmt.
84 1.400 X 1.900 X 1 = 2.660 Sqmt.
85 1.500 X 1.900 X 1 = 2.850 Sqmt.
86 1.300 X 1.300 X 1/2 = 0.845 Sqmt.
87 3.285 X 1.900 X 1 = 6.242 Sqmt.
88 1.900 X 7.000 X 1 = 13.300 Sqmt.
<b>TOTAL = 4308.997 Sqmt.</b>

Total Non-FAR Area of Basement-2 (A+B) = 11,662.375 Sqmt.  
 Total Services Area of Basement-2 (C-B) = 3,242.451 Sqmt.  
 Total Parking Area of Basement-2 = 7,920.924 Sqmt.

This is a "PROVISIONAL BUILDING PLAN" prepared only for the purpose of providing information to the client. It is not to be used for any other purpose without the consent of the architect.

Architect: Designplus Architecture  
 Add: Unit-129, First Floor, Vigna Agora Mall  
 MG Road, Gurugram, Haryana, India  
 TEL: +91 124-4904300  
 EMAIL: info@dpa.co.in

Client: LANDMARK APARTMENTS PVT. LTD.

Project Title: REVISED BUILDING PLANS FOR IT PARK, PHASE-2, AREA MEASURING 8.3125 ACRES (LICENSE NO. 97 OF 2008 DATED 12.05.2008) IN SECTOR-67, GURUGRAM BEING DEVELOPED BY LANDMARK APARTMENTS PVT. LTD.

Architect's Signature: [Signature]

Owner's Signature: [Signature]

Drawing Title: BASEMENT-2 PLAN & AREA CALCULATION  
 Drawing No: B-02  
 Scale: 1:300  
 Date: 26.12.2018  
 Sheet Size: AD  
 Sheet No: 03

TYPE	DOOR SIZE	CLL LEVEL	UNTL LEVEL	LOCATION
FD01	1500X1000	0	2100	STAIRCASES, FIRE TOWER,
FD02	1500X1000	0	2100	OFFICE DOOR
FD03	1500X1000	0	2100	LIFT LOBBY
FD04	1500X1000	0	2100	OFFICE DOOR
FD05	1500X1000	0	2100	JAN ROOM, STORE ROOM, IT ROOM
FD06	1500X1000	0	2100	JAN ROOM
FD07	1800X700	0	2100	LT PANEL ROOM, JT PANEL ROOM, AIR WASHER ROOM, HOT WATER HEATER
FD08	3000X1000	0	3000	TRANSFORMER ROOM, DJ ROOM
FD09	2700X3000	0	3000	MUAC PLANT ROOM
FD10	1800X2400	0	2400	PLUMBING, FIRE PUMP ROOM, STP ROOM
FD11	1000X1000	0	2100	ELECTRICAL ROOM
FD12	1000X1000	0	2100	TOILETS
FD13	1000X1000	0	2100	JAN ROOM
FD14	1500X1000	0	2100	OFFICE DOORS
FD15	1500X1000	0	2100	OFFICE DOORS
FD16	1500X1000	0	2100	TOILETS
FD17	1000X1000	0	2100	TOILET PARTITION

Note: All Fire Doors are 2 Hr. Fire Rated



Basement-2  
PARKING FLOOR

SYMBOL	DESCRIPTION
1	PLUMBING SHAWT
2	1100 SOIL PIPE
3	1100 WASTE PIPE
4	750 VENT PIPE
5	1100 RAIN WATER PIPE
6	1100 REFUGE FLOOR DRAIN PIPE
7	DOMESTIC WATER SUPPLY PIPE
8	FLUSHING WATER SUPPLY PIPE
9	FLUSHING WATER SUPPLY RISER
10	DOMESTIC WATER SUPPLY RISER

SYMBOL	DESCRIPTION
1	LEDGE WALL
2	SOIL PIPE
3	WASTE PIPE
4	DOMESTIC WATER SUPPLY
5	FLUSHING WATER SUPPLY
6	FLOOR P-T-RAP
7	FLOOR DRAIN
8	URINAL P-T-RAP
9	FLOOR CUTOOUT 150X150 MM
10	BALL VALVE

OC Granted  
 vide memo no.  
 ZP-453/AD/RA/2018/34884  
 dated 26.12.2018



