

CLUB - COMMERCIAL PART - (03)

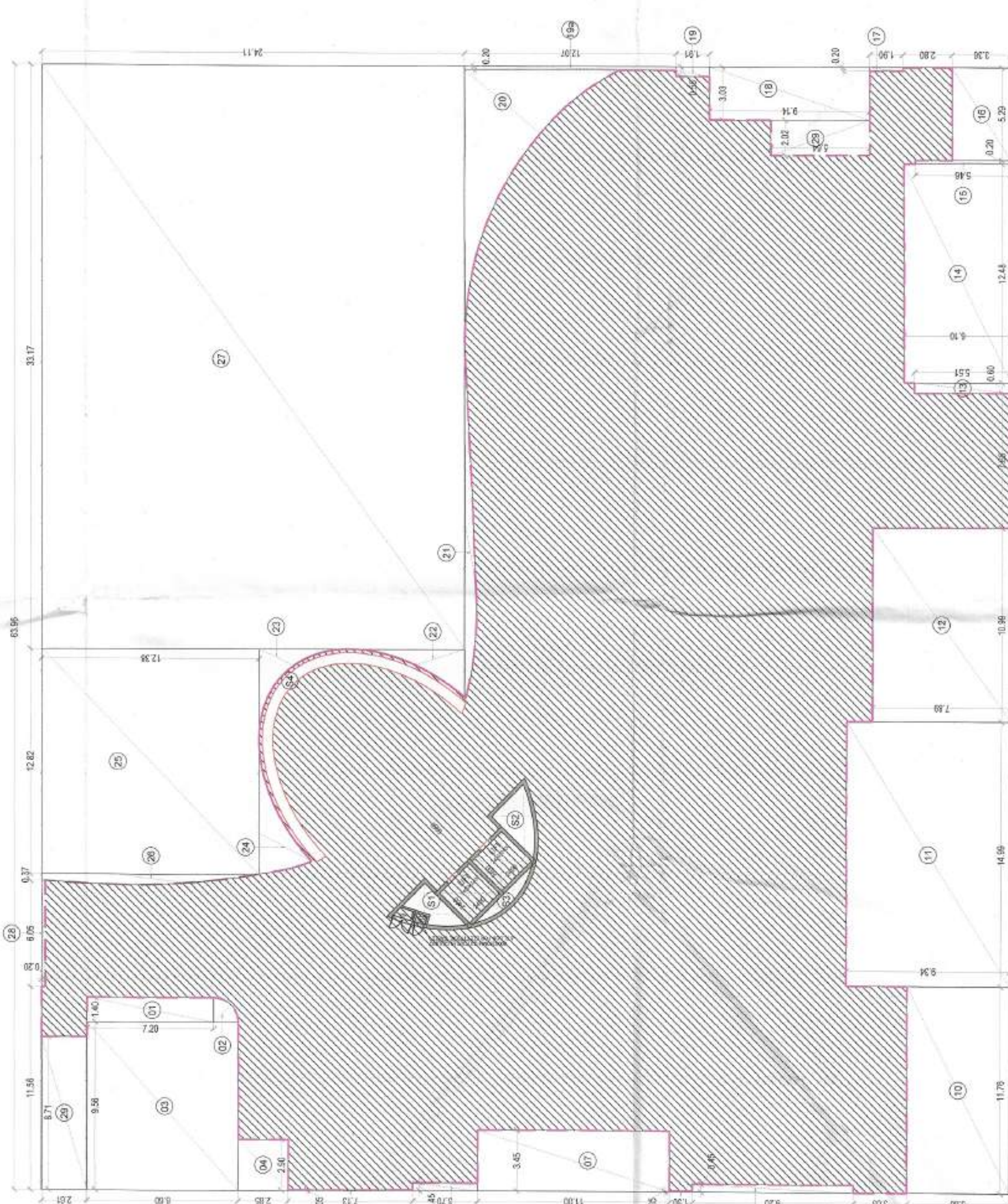


FAR AREA AT CLUB STILE FLOOR - PART 02			
(All Distances are in Meter & Area in Sqm)			
ITEM	NO.S	SHAP	AREA (SQ.MT)
A	1	RECTANGLE	63.960
TOTAL(A) =			63.960

CUTOUT AREA (NON FAR)			
ITEM	NO.S	SHAP	AREA (SQ.MT)
1	1	RECTANGLE	10.880
2	1	RECTANGLE	8.216
3	1	RECTANGLE	8.216
4	1	RECTANGLE	8.216
5	1	RECTANGLE	0.357
6	1	RECTANGLE	3.985
7	1	RECTANGLE	3.985
8	1	RECTANGLE	1.300
9	1	RECTANGLE	4.140
10	1	RECTANGLE	6.814
11	1	RECTANGLE	6.814
12	1	RECTANGLE	8.711
13	1	RECTANGLE	3.306
14	1	RECTANGLE	7.128
15	1	RECTANGLE	7.128
16	1	RECTANGLE	1.774
17	1	RECTANGLE	0.350
18	1	RECTANGLE	27.694
19	1	RECTANGLE	1.051
20	1	RECTANGLE	3.820
21	1	PLANE	38.620
22	1	PLANE	7.740
23	1	PLANE	6.010
24	1	PLANE	6.260
25	1	RECTANGLE	18.712
26	1	RECTANGLE	5.420
27	1	RECTANGLE	7.972
28	1	RECTANGLE	11.383
29	1	RECTANGLE	181.841
TOTAL(A) =			181.841

TOTAL FAR AREA AT TYPICAL LEVEL - ADDITION(A) - DEDUCTION (B-C-D) =			
181.841	-	-	24.460
TOTAL FAR AREA AT TYPICAL LEVEL			157.381
TOTAL FAR AREA AT TYPICAL LEVEL - ADDITION(A) - DEDUCTION (B-C-D) =			187.907
TOTAL FAR AREA AT TYPICAL LEVEL			187.907

STILT AREA DIAGRAM CLUB HOUSE - PART (01) (SCALE:1:200)



FAR AREA OF CLUB (COMMERCIAL PART) - (03)			
(All Distances are in Meter & Area in Sqm)			
ITEM	NO.S	SHAP	AREA (SQ.MT)
A	1	RECTANGLE	42.840
TOTAL(A) =			42.840

CUTOUT AREA (NON FAR)			
ITEM	NO.S	SHAP	AREA (SQ.MT)
1	1	RECTANGLE	7.518
2	1	RECTANGLE	7.518
3	1	RECTANGLE	7.518
4	1	RECTANGLE	12.260
5	1	RECTANGLE	25.675
6	1	RECTANGLE	27.164
7	1	RECTANGLE	18.368
8	1	RECTANGLE	6.248
9	1	RECTANGLE	5.008
10	1	RECTANGLE	153.037
11	1	RECTANGLE	42.950
12	1	PLANE	0.420
13	1	RECTANGLE	15.883
14	1	RECTANGLE	44.303
15	1	RECTANGLE	22.317
16	1	PLANE	0.570
17	1	PLANE	0.920
TOTAL(A) =			696.165

TOTAL FAR AREA AT TYPICAL LEVEL - ADDITION(A) - DEDUCTION (B-C-D) =			
696.165	-	-	614.491
TOTAL FAR AREA AT TYPICAL LEVEL			614.491

STILT AREA DIAGRAM CLUB HOUSE - PART (03) (SCALE:1:200)

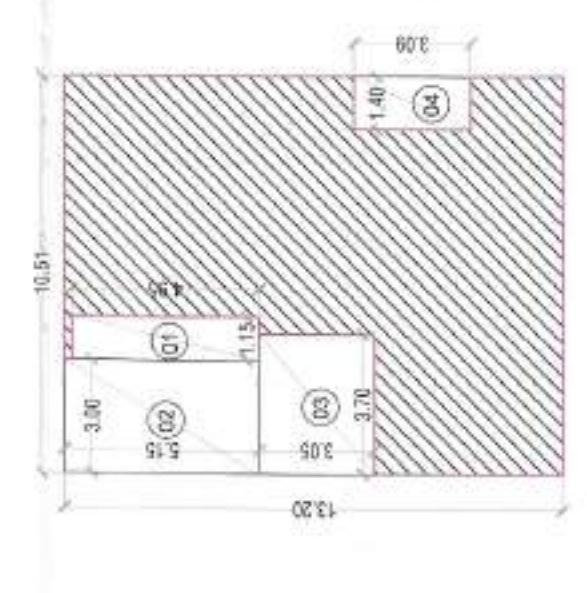


FAR AREA AT CLUB STILE FLOOR - PART 02			
(All Distances are in Meter & Area in Sqm)			
ITEM	NO.S	SHAP	AREA (SQ.MT)
A	1	RECTANGLE	13.200
TOTAL(A) =			13.200

CUTOUT AREA (NON FAR)			
ITEM	NO.S	SHAP	NO. X LENGTH
1	1	RECTANGLE	1.150 X 4.850
2	1	RECTANGLE	3.000 X 5.150
3	1	RECTANGLE	3.700 X 11.285
4	1	RECTANGLE	1.400 X 3.990
TOTAL(A) =			36.754

TOTAL FAR AREA AT TYPICAL LEVEL - ADDITION(A) - DEDUCTION (B-C-D) =			
36.754	-	-	101.979
TOTAL FAR AREA AT TYPICAL LEVEL			101.979

STILT AREA DIAGRAM CLUB HOUSE TOILET BI PART (02) (SCALE:1:200)



Club		4900.694
Occupant load		816.782
Required	MALE	20
Required	FEMALE	20
Number of		
TOILET	14	20
URNAL	16	20

M. A. H. ANSARI
 No. 12345
 State of Punjab, India

CLIENT: SION TUREGLOBAL HOMES PVT. LTD
 ARCHITECT: MSAR AHMED ANSARI
 ARCHITECT (B.A.R.C.H)
 CA00559024
 PROJECT: CLUB HOUSE STILT FLOOR PLAN
 DRAWING TITLE: CLUB HOUSE STILT FLOOR PLAN
 SHEET NO. 81
 SCALE: 1:200
 DATE: 14-08-2025