

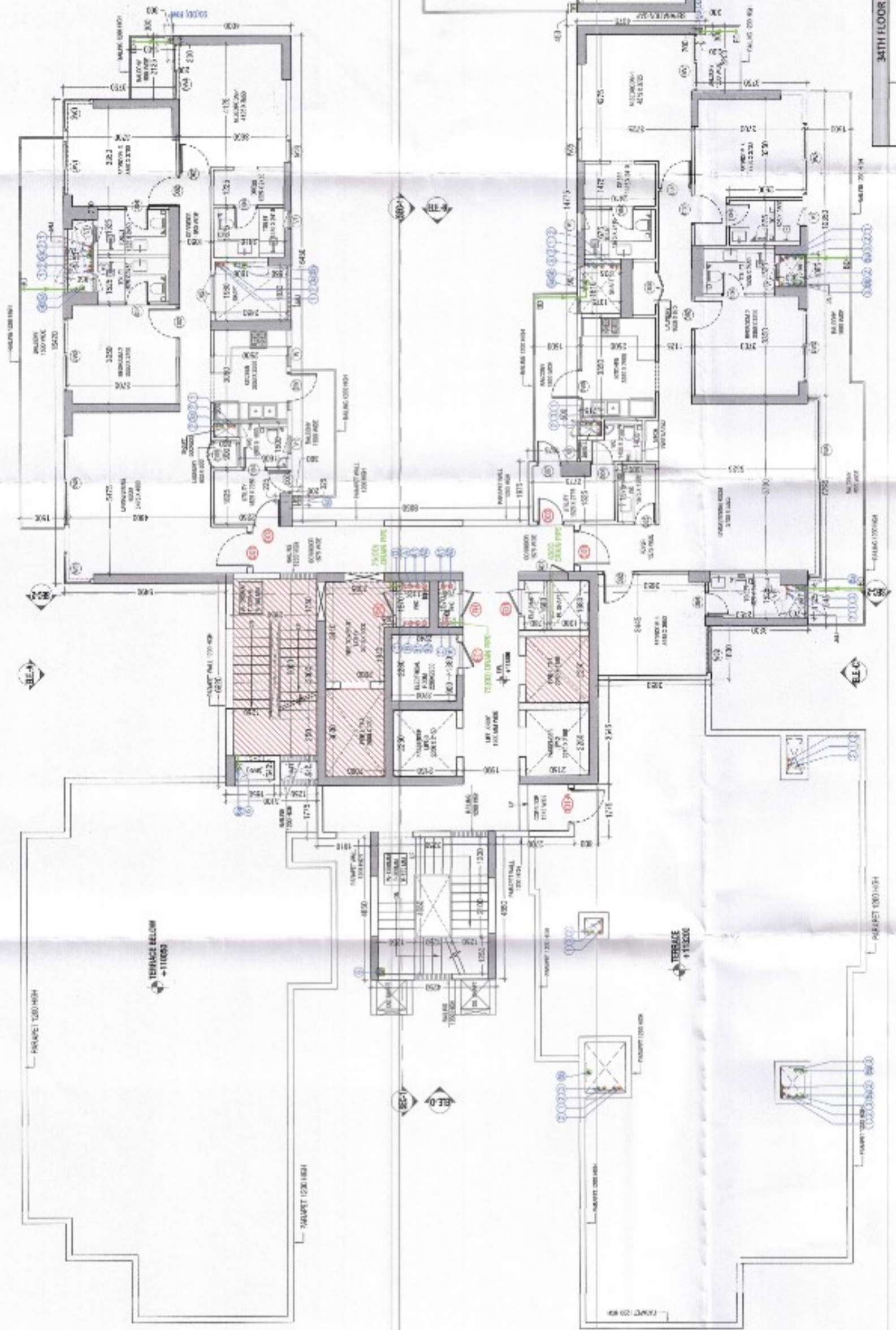
Checked and approved for Public Health
(Internal) Submitted on 28/05/2023, 2:27 PM
in accordance with the Building Code of Australia

Structural Engineer (SE)
HSP, Perth WA

APPROVED
DTP(HO)
APPROVED
APPROVED
APPROVED

TO BE READ WITH THIS OFFICE
MEMO NO. 3164
DATED: 29/11/23

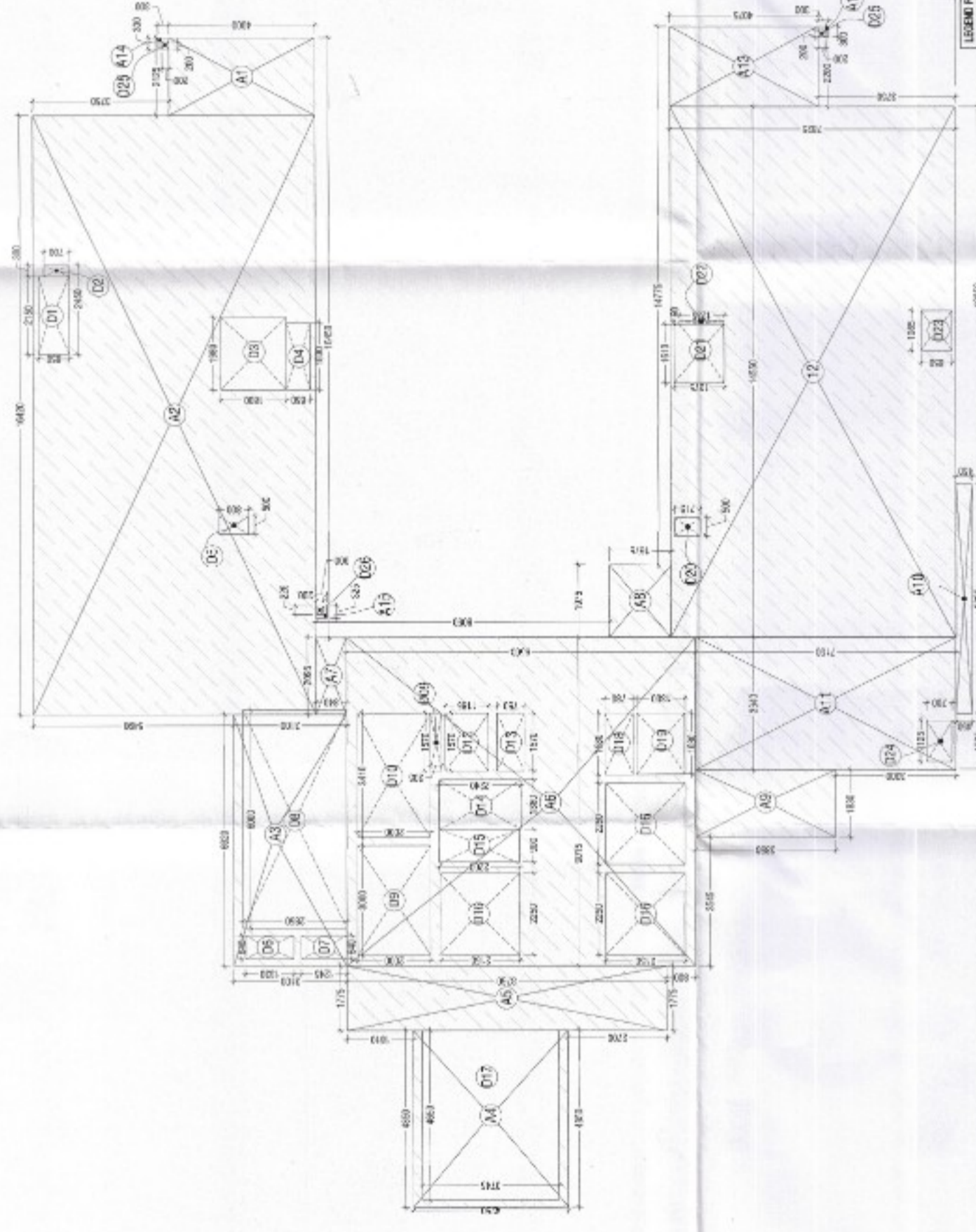
MEMBER
BIMAC



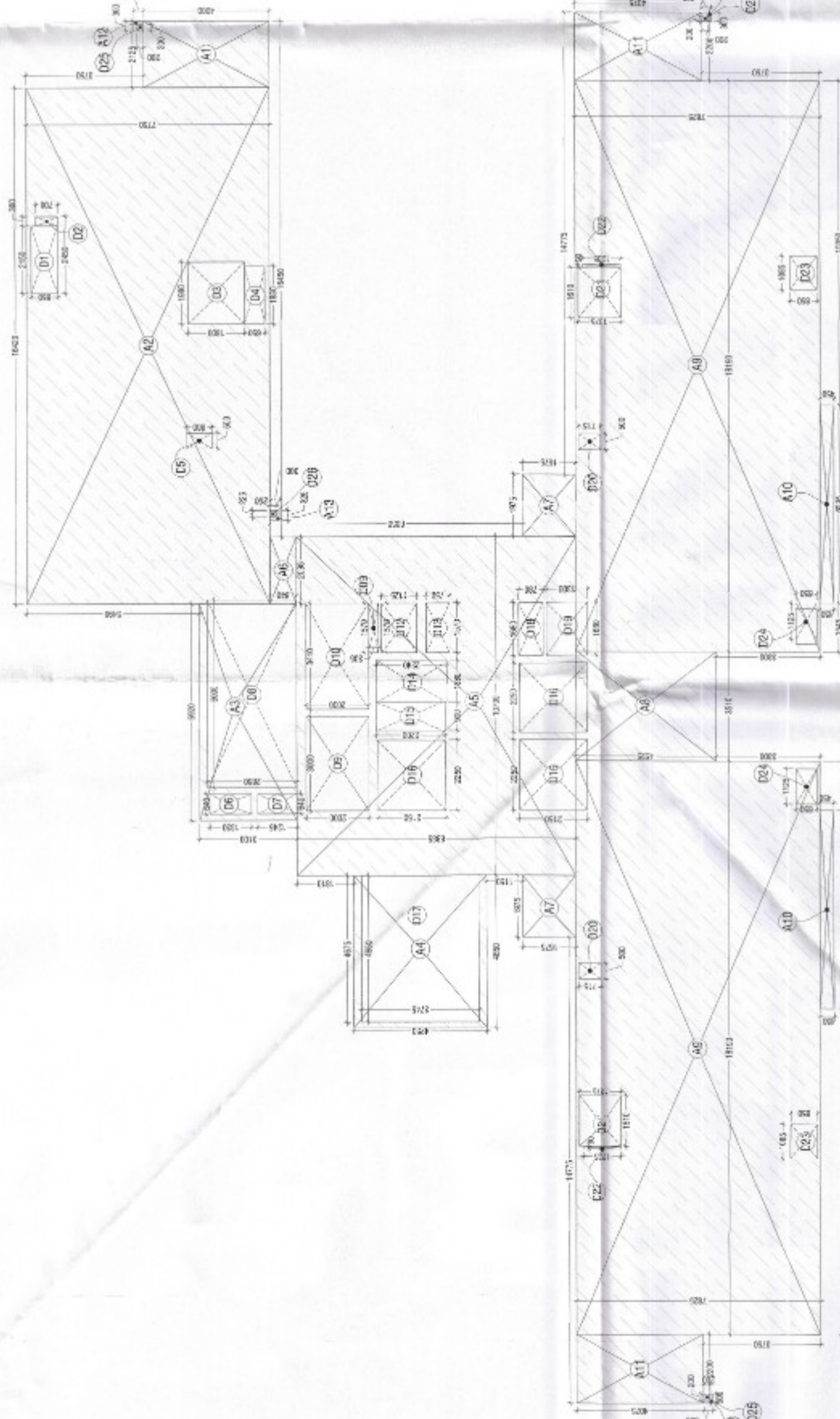
TOWER-B1_35TH FLOOR PLAN



TOWER-B1_34TH FLOOR PLAN



TOWER-B1_35TH & 36TH FLOOR PLAN



TOWER-B1_34TH FLOOR AREA DIAGRAM

S. No.	WIDTH	LENGTH	AREA IN SQUARE METERS
35TH & 36TH FLOOR FAR AREA CALCULATION (SI)			
A1	2.225	4.000	8.900
A2	16.430	7.750	127.235
A3	6.520	3.100	20.412
A4	4.850	4.250	20.613
A5	1.775	8.700	15.440
A6	2.265	0.565	1.279
A7	1.975	3.760	7.426
A8	1.870	3.895	7.299
A9	1.870	3.895	7.299
A10	6.295	0.450	2.833
A11	3.660	7.150	26.088
A12	14.550	2.825	41.084
A13	1.975	6.615	13.064
A14	0.100	0.800	0.080
A15	0.325	0.300	0.098
TOTAL ADDITION (A)			483.020
DEDUCTIONS (D)			
D1	2.150	0.850	1.828
D2	1.800	1.800	3.240
D3	1.800	1.800	3.240
D4	1.800	0.600	1.080
D5	0.400	0.400	0.160
D6	0.665	1.330	0.885
D7	0.665	1.330	0.885
D8	6.005	2.850	17.115
D9	3.100	2.850	8.835
D10	3.100	2.850	8.835
D11	1.970	0.895	1.767
D12	1.178	0.790	0.931
D13	1.178	0.790	0.931
D14	1.178	0.790	0.931
D15	1.178	0.790	0.931
D16	1.178	0.790	0.931
D17	1.178	0.790	0.931
D18	1.178	0.790	0.931
D19	1.178	0.790	0.931
D20	1.178	0.790	0.931
D21	1.178	0.790	0.931
D22	1.178	0.790	0.931
D23	1.178	0.790	0.931
D24	1.178	0.790	0.931
D25	1.178	0.790	0.931
D26	1.178	0.790	0.931
TOTAL DEDUCTIONS (D)			97.931
TOTAL WITH FLOOR FAR AREA (A-D)			385.089

S. No.	WIDTH	LENGTH	AREA IN SQUARE METERS
34TH FLOOR FAR AREA CALCULATION (SI)			
A1	16.430	7.750	127.235
A2	6.920	3.100	21.452
A3	4.850	4.250	20.613
A4	1.775	8.700	15.440
A5	2.265	0.565	1.279
A6	1.975	3.760	7.426
A7	1.870	3.895	7.299
A8	1.870	3.895	7.299
A9	6.295	0.450	2.833
A10	3.660	7.150	26.088
A11	14.550	2.825	41.084
A12	1.975	6.615	13.064
A13	0.100	0.800	0.080
A14	0.325	0.300	0.098
TOTAL ADDITION (A)			606.252
DEDUCTIONS (D)			
D1	2.150	0.850	1.828
D2	1.800	1.800	3.240
D3	1.800	1.800	3.240
D4	1.800	0.600	1.080
D5	0.400	0.400	0.160
D6	0.665	1.330	0.885
D7	0.665	1.330	0.885
D8	6.005	2.850	17.115
D9	3.100	2.850	8.835
D10	3.100	2.850	8.835
D11	1.970	0.895	1.767
D12	1.178	0.790	0.931
D13	1.178	0.790	0.931
D14	1.178	0.790	0.931
D15	1.178	0.790	0.931
D16	1.178	0.790	0.931
D17	1.178	0.790	0.931
D18	1.178	0.790	0.931
D19	1.178	0.790	0.931
D20	1.178	0.790	0.931
D21	1.178	0.790	0.931
D22	1.178	0.790	0.931
D23	1.178	0.790	0.931
D24	1.178	0.790	0.931
D25	1.178	0.790	0.931
D26	1.178	0.790	0.931
TOTAL DEDUCTIONS (D)			154.962
TOTAL WITH FLOOR FAR AREA (A-D)			451.290

NAME	WIDTH	HEIGHT	COL	SCHEDULE	AREA
ED1	600	2250	150	2400	1350000
ED2	600	2250	150	2400	1350000
ED3	600	2250	150	2400	1350000
ED4	600	2250	150	2400	1350000
ED5	600	2250	150	2400	1350000
ED6	600	2250	150	2400	1350000
ED7	600	2250	150	2400	1350000
ED8	600	2250	150	2400	1350000
ED9	600	2250	150	2400	1350000
ED10	600	2250	150	2400	1350000
ED11	600	2250	150	2400	1350000
ED12	600	2250	150	2400	1350000
ED13	600	2250	150	2400	1350000
ED14	600	2250	150	2400	1350000
ED15	600	2250	150	2400	1350000
ED16	600	2250	150	2400	1350000
ED17	600	2250	150	2400	1350000
ED18	600	2250	150	2400	1350000
ED19	600	2250	150	2400	1350000
ED20	600	2250	150	2400	1350000
ED21	600	2250	150	2400	1350000
ED22	600	2250	150	2400	1350000
ED23	600	2250	150	2400	1350000
ED24	600	2250	150	2400	1350000
ED25	600	2250	150	2400	1350000
ED26	600	2250	150	2400	1350000
ED27	600	2250	150	2400	1350000
ED28	600	2250	150	2400	1350000
ED29	600	2250	150	2400	1350000
ED30	600	2250	150	2400	1350000
ED31	600	2250	150	2400	1350000
ED32	600	2250	150	2400	1350000
ED33	600	2250	150	2400	1350000
ED34	600	2250	150	2400	1350000
ED35	600	2250	150	2400	1350000
ED36	600	2250	150	2400	1350000
ED37	600	2250	150	2400	1350000
ED38	600	2250	150	2400	1350000
ED39	600	2250	150	2400	1350000
ED40	600	2250	150	2400	1350000
ED41	600	2250	150	2400	1350000
ED42	600	2250	150	2400	1350000
ED43	600	2250	150	2400	1350000
ED44	600	2250	150	2400	1350000
ED45	600	2250	150	2400	1350000
ED46	600	2250	150	2400	1350000
ED47	600	2250	150	2400	1350000
ED48	600	2250	150	2400	1350000
ED49	600	2250	150	2400	1350000
ED50	600	2250	150	2400	1350000
ED51	600	2250	150	2400	1350000
ED52	600	2250	150	2400	1350000
ED53	600	2250	150	2400	1350000
ED54	600	2250	150	2400	1350000
ED55	600	2250	150	2400	1350000
ED56	600	2250	150	2400	1350000
ED57	600	2250	150	2400	1350000
ED58	600	2250	150	2400	1350000
ED59	600	2250	150	2400	1350000
ED60	600	2250	150	2400	1350000
ED61	600	2250	150	2400	1350000
ED62	600	2250	150	2400	1350000
ED63	600	2250	150	2400	1350000
ED64	600	2250	150	2400	1350000
ED65	600	2250	150	2400	1350000
ED66	600	2250	150	2400	1350000
ED67	600	2250	150	2400	1350000
ED68	600	2250	150	2400	1350000
ED69	600	2250	150	2400	1350000
ED70	600	2250	150	2400	1350000
ED71	600	2250	150	2400	1350000
ED72	600	2250	150	2400	1350000
ED73	600	2250	150	2400	1350000
ED74	600	2250	150	2400	1350000
ED75	600	2250	150	2400	1350000
ED76	600	2250	150	2400	1350000
ED77	600	2250	150	2400	1350000
ED78	600	2250	150	2400	1350000
ED79	600	2250	150	2400	1350000
ED80	600	2250	150	2400	1350000
ED81	600	2250	150	2400	1350000
ED82	600	2250	150	2400	1350000
ED83	600	2250	150	2400	1350000
ED84	600	2250	150	2400	1350000
ED85	600	2250	150	2400	1350000
ED86	600	2250	150	2400	1350000
ED87	600	2250	150	2400	1350000
ED88	600	2250	150	2400	1350000
ED89	600	2250	150	2400	1350000
ED90	600	2250	150	2400	1350000
ED91	600	2250	150	2400	1350000
ED92	600	2250	150	2400	1350000
ED93	600	2250	150	2400	1350000
ED94	600	2250	150	2400	1350000
ED95	600	2250	150	2400	1350000
ED96	600	2250	150	2400	1350000
ED97	600	2250	150	2400	1350000
ED98	600	2250	150	2400	1350000
ED99	600	2250	150	2400	1350000
ED100	600	2250	150	2400	1350000

NAME	WIDTH	HEIGHT	COL	SCHEDULE	AREA
ED1	600	2250	150	2400	1350000
ED2	600	2250	150	2400	1350000
ED3	600	2250	150	2400	1350000
ED4	600	2250	150	2400	1350000
ED5	600	2250	150	2400	1350000
ED6	600	2250	150	2400	1350000
ED7	600	2250	150	2400	1350000
ED8	600	2250	150	2400	1350000
ED9	600	2250	150	2400	1350000
ED10	600	2250	150	2400	1350000
ED11	600	2250	150	2400	1350000
ED12	600	2250	150	2400	1350000
ED13	600	2250	150	2400	1350000
ED14	600	2250	150	2400	1350000
ED15	600	2250	150	2400	1350000
ED16	600	2250	150	2400	1350000
ED17	600	2250	150	2400	1350000
ED18	600	2250	150	2400	1350000
ED19	600	2250	150	2400	1350000
ED20	600	2250	150	2400	1350000
ED21	600	2250	150	2400	1350000
ED22	600	2250	150	2400	1350000
ED23	600	2250	150	2400	1350000
ED24	600	2250	150	2400	1350000
ED25	600	2250	150	2400	1350000
ED26	600	2250	150	2400	1350000
ED27	600	2250	150	2400	1350000
ED28	600	2250	150	2400	1350000