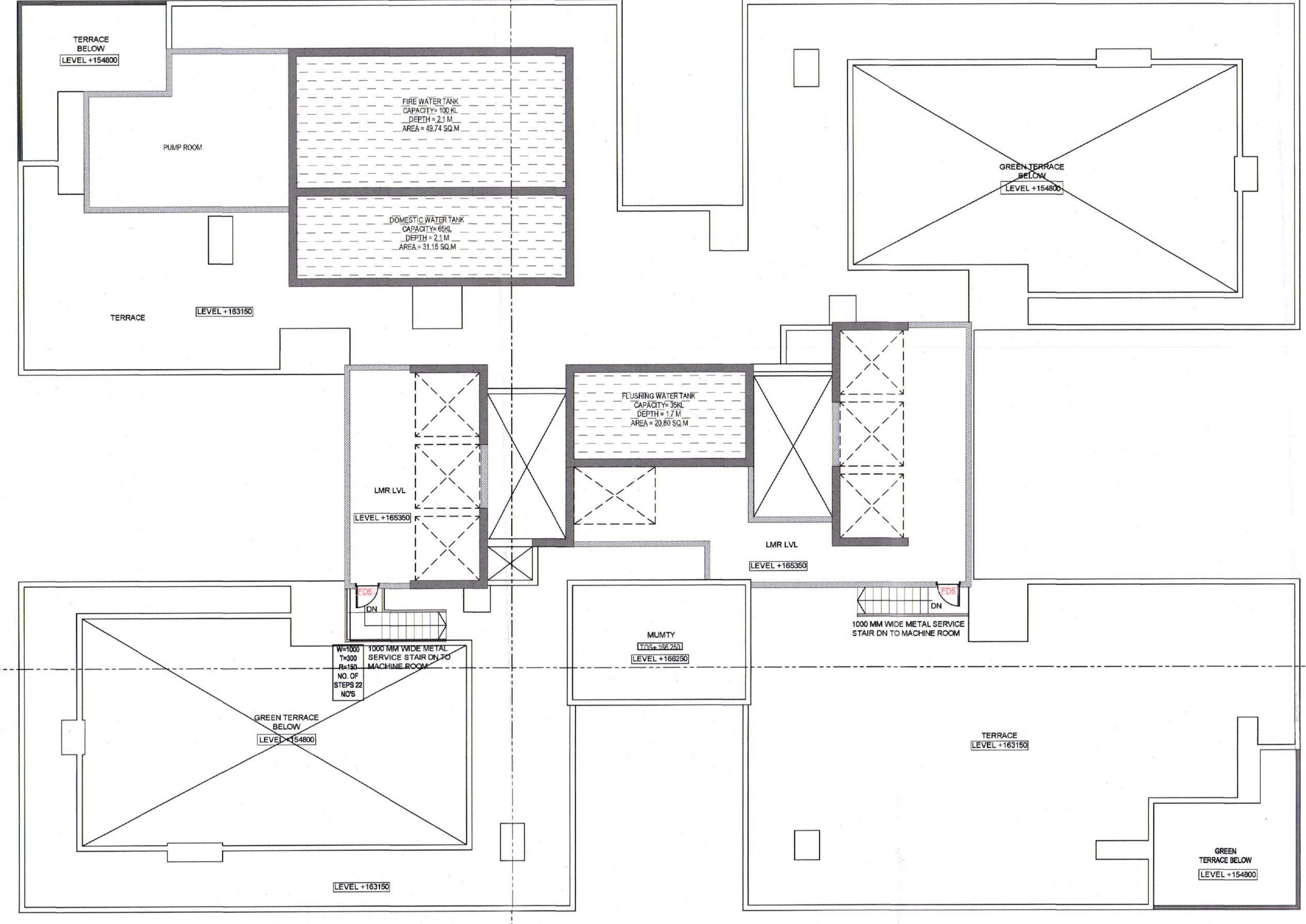
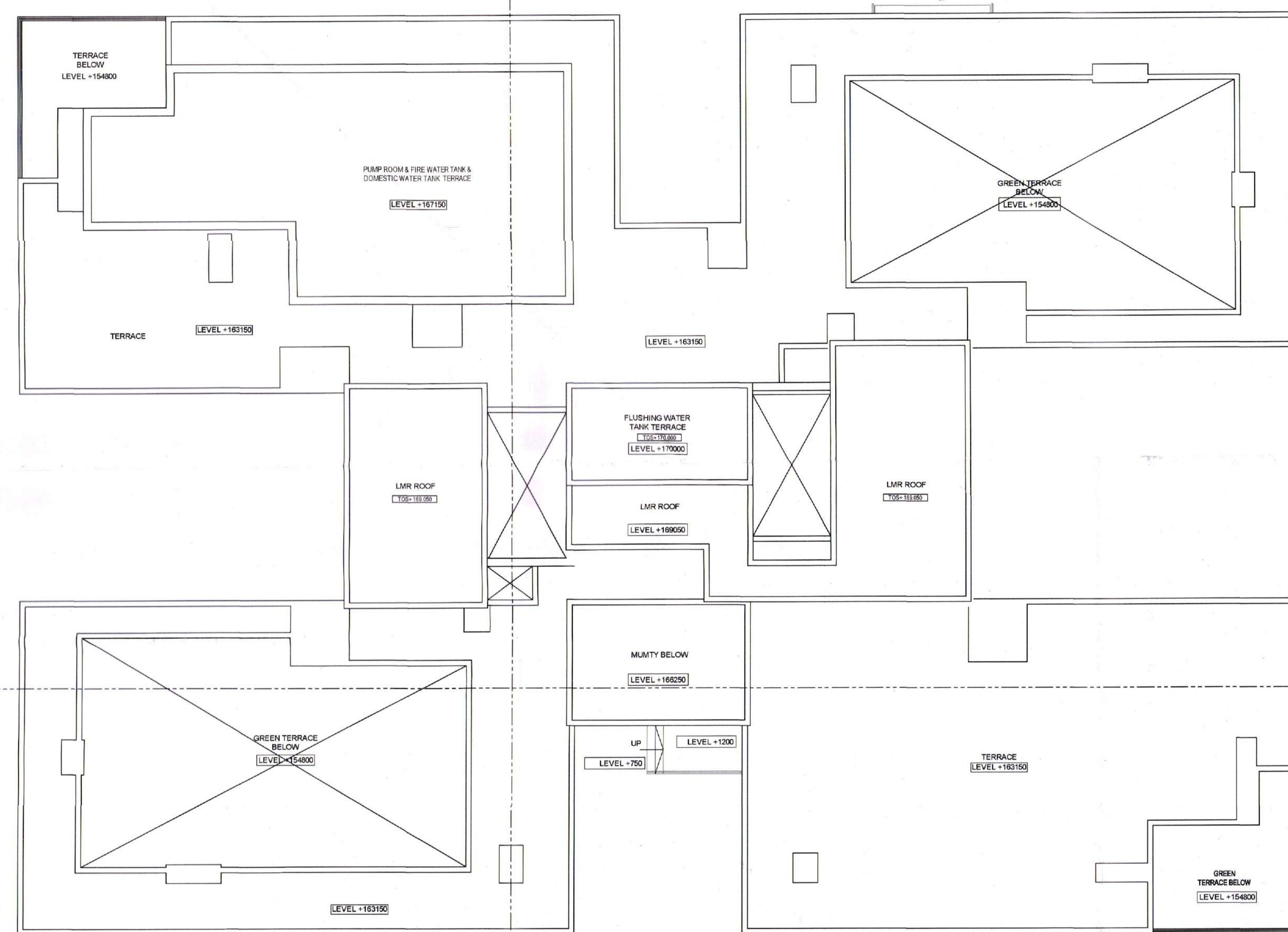


TERARACE FLOOR PLAN  
SCALE - 1:100

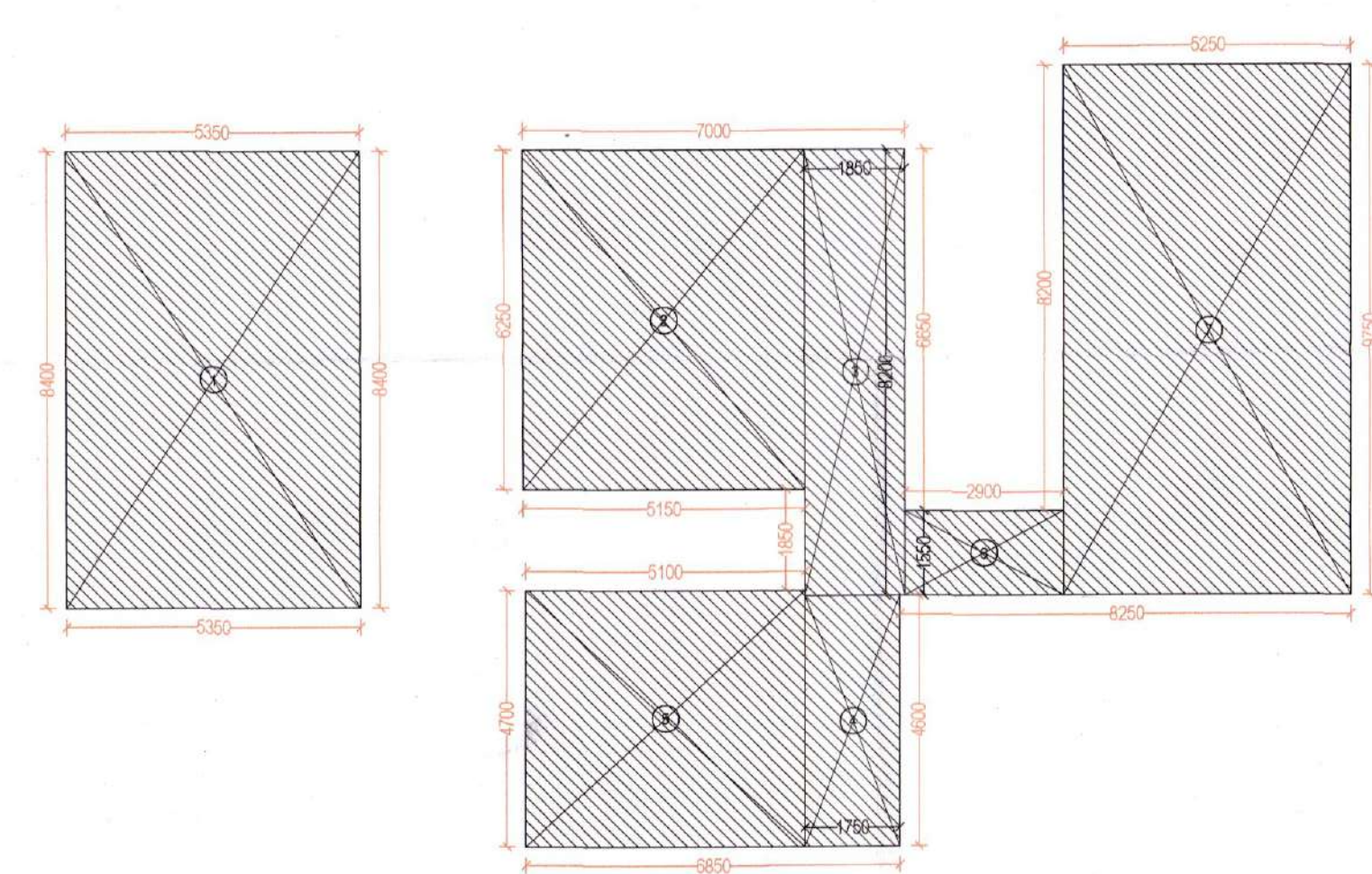


MACHINE ROOM FLOOR PLAN  
SCALE - 1:100



TOP SLAB PLAN  
SCALE - 1:100

TERRACE FLOOR AREA CALCULATION (NON FAR)  
SCALE - 1:100



NON F.A.R. AREA ON TERRACE FLOOR

NAME	SHAPE	NO	SIZE (IN MTRS.)	TOTAL (IN SQ.MTR.)
1	RECTANGLE	1	5.300 x 8.400	44.54
2	RECTANGLE	1	5.150 x 8.250	32.19
3	RECTANGLE	1	1.800 x 8.200	15.17
4	RECTANGLE	1	4.600 x 1.750	8.05
5	RECTANGLE	1	4.700 x 5.100	23.97
6	RECTANGLE	1	2.900 x 1.950	4.90
7	RECTANGLE	1	3.200 x 9.700	31.19
<b>TOTAL ADDITION</b>				<b>180.00</b>
<b>NON F.A.R. AREA ON TERRACE FLOOR</b>				<b>180.00</b>

Sanctioned Memo No. 24/PS/2025 Dtd. 09/04/2025

Checked and found ok for Public Health (Internal) Service only subject to compliance in forwarding letter No. 24/PS/2025 Dtd. 09/04/2025

Sanctioning Engineer (HO) Chief Engineer (I) HSPV, Panchukula

Sanctioned Memo No. 24/PS/2025 Dtd. 09/04/2025

PLUMBING LEGEND

- 1000 SOIL PIPE
- 1000 WASTE PIPE
- 750 VENT PIPE
- DOMESTIC WATER SUPPLY MAIN PIPE
- DOMESTIC WATER SUPPLY FOR TOP THREE FLOOR
- DOMESTIC WATER SUPPLY BRANCH PIPE
- FLUSHING WATER SUPPLY MAIN PIPE
- FLUSHING WATER SUPPLY BRANCH PIPE
- DOMESTIC WATER RISER TO OHT
- FLUSHING WATER RISER TO OHT
- HOT WATER SUPPLY
- HOT WATER RETURN
- 1000 BALCONY DRAIN PIPE
- 1000 RAIN WATER PIPE

S.NO.	NAME	WIDTH	CELL LVL	LINTEL LVL
1	D1	900	±0	+2250
2	D2	1000	±0	+2250
3	D3	1200	±0	+2250
4	D4	1100	±0	+2250
5	D5	1050	±0	+2250
6	D6	900	±0	+2250
7	D7	1200	±0	+2250
8	D8	800	±0	+2250
9	D9	1500	±0	+2250
<b>SLIDING DOOR</b>				
10	SD1	1550	±0	+2250
11	SD2	1800	±0	+2250
12	SD3	2400	±0	+2250
13	SD4	3800	±0	+2250
14	SD5	2600	±0	+2250
15	SD6	3115x540	±0	+2250
16	SD7	3115x540	±0	+2250
17	SD8	2480x540	±0	+2250
18	SD9	2700	±0	+2250
19	SD10	2400	±0	+2250
20	SD11	3240x540	±0	+2250
21	SD12	4800	±0	+2250
22	SD13	3600	±0	+2250
23	SD14	1690x1340	±0	+2250
<b>SLIDING FOLDING DOOR</b>				
24	SF1	2000	±0	+2400
<b>FIRE DOOR</b>				
25	FD1	1250	±0	+2400
26	FD2	900	±0	+2400
27	FD3	1100	±0	+2400
28	FD4	1100	±0	+2400
29	FD5	1100	+100	+2400
30	FD6	900	+100	+2400
31	FD7	900	+100	+2400
32	FD8	1200	±0	+2400
33	FD9	1000	±0	+2400
34	FD10	1800	±0	+2400
35	FD11	1500	±0	+2400
<b>DOOR WINDOW</b>				
36	DW1	800	±0	+2550
37	DW2	1000x400	±0	+2550
38	DW3	1050x250	±0	+2550
39	DW4	1075x1500x1075	±0	+2550
40	DW5	2700x1500x2700	±0	+2550
41	DW6	600x1500x600	±0	+2550
<b>GLASS DOOR</b>				
42	GD1	900	±0	+2600
43	GD2	1500	±0	+2600
44	GD3	1200	±0	+2600
<b>VENTILATOR &amp; SHIRT ACCESS DOOR</b>				
45	V	600	+1200	+2600
<b>WINDOW</b>				
46	W1	1500	±0	+2550
47	W2	1150	±0	+2550
48	W3	950	±0	+2550
49	W4	1550	±0	+2550
50	W5	1300	±0	+2550
51	W6	2150	±0	+2550
52	W7	1250	±0	+2550
53	W8	1875	±0	+2550
54	W9	1000	±0	+2550
55	W10	900	±0	+2550
56	W11	1800	±0	+2550
57	W12	1050	±0	+2550
58	W13	1795	±0	+2550
59	W14	1425	±0	+2550
60	W15	1875	±0	+2550
<b>STRUCTURAL GLAZING</b>				
61	G1	640	+300	+2550
62	G2	1875	+300	+2550
63	G3	3650	+300	+2550
64	G4	2700	+300	+2550
65	G5	3800	+300	+2550
66	G6	2800	+300	+2550
67	G7	1050	+300	+2550
68	G8	3150x540	+300	+2550
69	G9	6900	+300	+2550
70	G10	6000	+300	+2550
71	G11	1900	+300	+2550
72	G12	2400	+300	+2550
73	G13	1750	+300	+2550
74	G14	2400x540	+300	+2550
75	G15	1800	+300	+2550
76	G16	3180x540	+300	+2550
77	G17	3150	+300	+2550
78	G18	4200	+300	+2550