

Note :-
1. BUILDING WILL BE DESIGNED (STRUCTURES) AS PER RELEVANT IS CODES FOR EARTH QUAKE RESISTANCE.

PROJECT
 REVERSED BUILDINGS PLANS OF COMMERCIAL COLONY (TOD) MEASURING 17.48 IS AGRES LICENCE NO. LICENCE NO. 238 OF 2007 DATED 25.10.2007. LICENCE NO. 241 OF 2007 DATED 25.10.2007 & LICENCE NO. 199 OF 2008 DATED 8.12.2008 TOTALING 24.4779 ACRES IN BEING DEVELOPED BY PIONEER URBAN LAND & INFRASTRUCTURE LTD.
CLIENT
 PIONEER URBAN LAND & INFRASTRUCTURE LTD.

DESIGN ARCHITECT
 Pioneer Urban
 Near G.A.F. Course Extension Road,
 Gurugram - 122001 Haryana

RSP
 RSP Design Consultants
 (India) Pvt. Ltd.
 103, First Floor, Bhatia Business Tower, Sector - 48, Sohna Road
 Gurgaon, 122018, India TEL: 4709888 FAX: 4709818
 HEAD OFFICE: 303, MASSIJI ROAD, BANOLDARE - 380 001
 Email: rsp@rspindia.com www.rspindia.net

RSM'S ARCHITECTS
 RSM'S ARCHITECTS PVT. LTD.
 69, Nara Niwas, Bhawanji Kunj
 (Behind D2), Vasant Kunj,
 New Delhi - 110070.
 Tel.: 011-26898616, 26898617
 www.rsm's-arch.com

TO THE CLIENT WITHIN THE OFFICE

DATE: 25.06.2024

SCALE: 1:200

DRAWING TITLE: ELEVATION - 01

OWNER'S SEAL & SIGNATURE

ARCHITECT'S SEAL & SIGNATURE

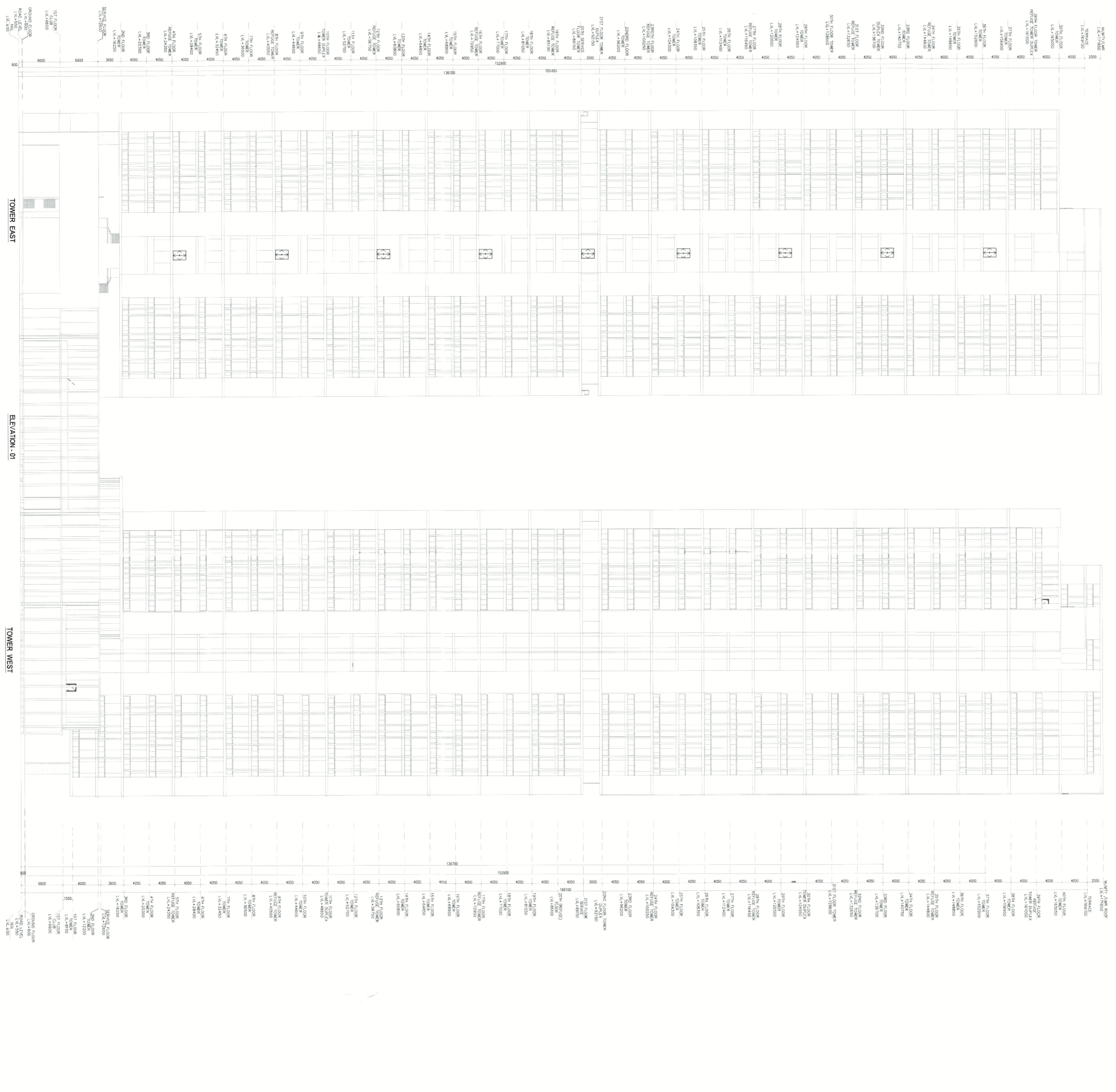
APPROVED BY: [Signature]

DATE: 25.06.2024

JUNE - 2024 Scale : 1:200 Drawing No. - E-01

LEAD ARCHITECT (OWNER'S SEAL & SIGNATURE)

25.06.2024



40th FLOOR TOWER EAST	L.V. +4875.00	4050
39th FLOOR TOWER EAST	L.V. +4800.00	4000
38th FLOOR TOWER EAST	L.V. +4725.00	3950
37th FLOOR TOWER EAST	L.V. +4650.00	3900
36th FLOOR TOWER EAST	L.V. +4575.00	3850
35th FLOOR TOWER EAST	L.V. +4500.00	3800
34th FLOOR TOWER EAST	L.V. +4425.00	3750
33rd FLOOR TOWER EAST	L.V. +4350.00	3700
32nd FLOOR TOWER EAST	L.V. +4275.00	3650
31st FLOOR TOWER EAST	L.V. +4200.00	3600
30th FLOOR TOWER EAST	L.V. +4125.00	3550
29th FLOOR TOWER EAST	L.V. +4050.00	3500
28th FLOOR TOWER EAST	L.V. +3975.00	3450
27th FLOOR TOWER EAST	L.V. +3900.00	3400
26th FLOOR TOWER EAST	L.V. +3825.00	3350
25th FLOOR TOWER EAST	L.V. +3750.00	3300
24th FLOOR TOWER EAST	L.V. +3675.00	3250
23rd FLOOR TOWER EAST	L.V. +3600.00	3200
22nd FLOOR TOWER EAST	L.V. +3525.00	3150
21st FLOOR TOWER EAST	L.V. +3450.00	3100
20th FLOOR TOWER EAST	L.V. +3375.00	3050
19th FLOOR TOWER EAST	L.V. +3300.00	3000
18th FLOOR TOWER EAST	L.V. +3225.00	2950
17th FLOOR TOWER EAST	L.V. +3150.00	2900
16th FLOOR TOWER EAST	L.V. +3075.00	2850
15th FLOOR TOWER EAST	L.V. +3000.00	2800
14th FLOOR TOWER EAST	L.V. +2925.00	2750
13th FLOOR TOWER EAST	L.V. +2850.00	2700
12th FLOOR TOWER EAST	L.V. +2775.00	2650
11th FLOOR TOWER EAST	L.V. +2700.00	2600
10th FLOOR TOWER EAST	L.V. +2625.00	2550
9th FLOOR TOWER EAST	L.V. +2550.00	2500
8th FLOOR TOWER EAST	L.V. +2475.00	2450
7th FLOOR TOWER EAST	L.V. +2400.00	2400
6th FLOOR TOWER EAST	L.V. +2325.00	2350
5th FLOOR TOWER EAST	L.V. +2250.00	2300
4th FLOOR TOWER EAST	L.V. +2175.00	2250
3rd FLOOR TOWER EAST	L.V. +2100.00	2200
2nd FLOOR TOWER EAST	L.V. +2025.00	2150
1st FLOOR TOWER EAST	L.V. +1950.00	2100
GROUND FLOOR TOWER EAST	L.V. +1875.00	2050
ROAD LEVEL TOWER EAST	L.V. +1800.00	2000
40th FLOOR TOWER WEST	L.V. +4875.00	4050
39th FLOOR TOWER WEST	L.V. +4800.00	4000
38th FLOOR TOWER WEST	L.V. +4725.00	3950
37th FLOOR TOWER WEST	L.V. +4650.00	3900
36th FLOOR TOWER WEST	L.V. +4575.00	3850
35th FLOOR TOWER WEST	L.V. +4500.00	3800
34th FLOOR TOWER WEST	L.V. +4425.00	3750
33rd FLOOR TOWER WEST	L.V. +4350.00	3700
32nd FLOOR TOWER WEST	L.V. +4275.00	3650
31st FLOOR TOWER WEST	L.V. +4200.00	3600
30th FLOOR TOWER WEST	L.V. +4125.00	3550
29th FLOOR TOWER WEST	L.V. +4050.00	3500
28th FLOOR TOWER WEST	L.V. +3975.00	3450
27th FLOOR TOWER WEST	L.V. +3900.00	3400
26th FLOOR TOWER WEST	L.V. +3825.00	3350
25th FLOOR TOWER WEST	L.V. +3750.00	3300
24th FLOOR TOWER WEST	L.V. +3675.00	3250
23rd FLOOR TOWER WEST	L.V. +3600.00	3200
22nd FLOOR TOWER WEST	L.V. +3525.00	3150
21st FLOOR TOWER WEST	L.V. +3450.00	3100
20th FLOOR TOWER WEST	L.V. +3375.00	3050
19th FLOOR TOWER WEST	L.V. +3300.00	3000
18th FLOOR TOWER WEST	L.V. +3225.00	2950
17th FLOOR TOWER WEST	L.V. +3150.00	2900
16th FLOOR TOWER WEST	L.V. +3075.00	2850
15th FLOOR TOWER WEST	L.V. +3000.00	2800
14th FLOOR TOWER WEST	L.V. +2925.00	2750
13th FLOOR TOWER WEST	L.V. +2850.00	2700
12th FLOOR TOWER WEST	L.V. +2775.00	2650
11th FLOOR TOWER WEST	L.V. +2700.00	2600
10th FLOOR TOWER WEST	L.V. +2625.00	2550
9th FLOOR TOWER WEST	L.V. +2550.00	2500
8th FLOOR TOWER WEST	L.V. +2475.00	2450
7th FLOOR TOWER WEST	L.V. +2400.00	2400
6th FLOOR TOWER WEST	L.V. +2325.00	2350
5th FLOOR TOWER WEST	L.V. +2250.00	2300
4th FLOOR TOWER WEST	L.V. +2175.00	2250
3rd FLOOR TOWER WEST	L.V. +2100.00	2200
2nd FLOOR TOWER WEST	L.V. +2025.00	2150
1st FLOOR TOWER WEST	L.V. +1950.00	2100
GROUND FLOOR TOWER WEST	L.V. +1875.00	2050
ROAD LEVEL TOWER WEST	L.V. +1800.00	2000