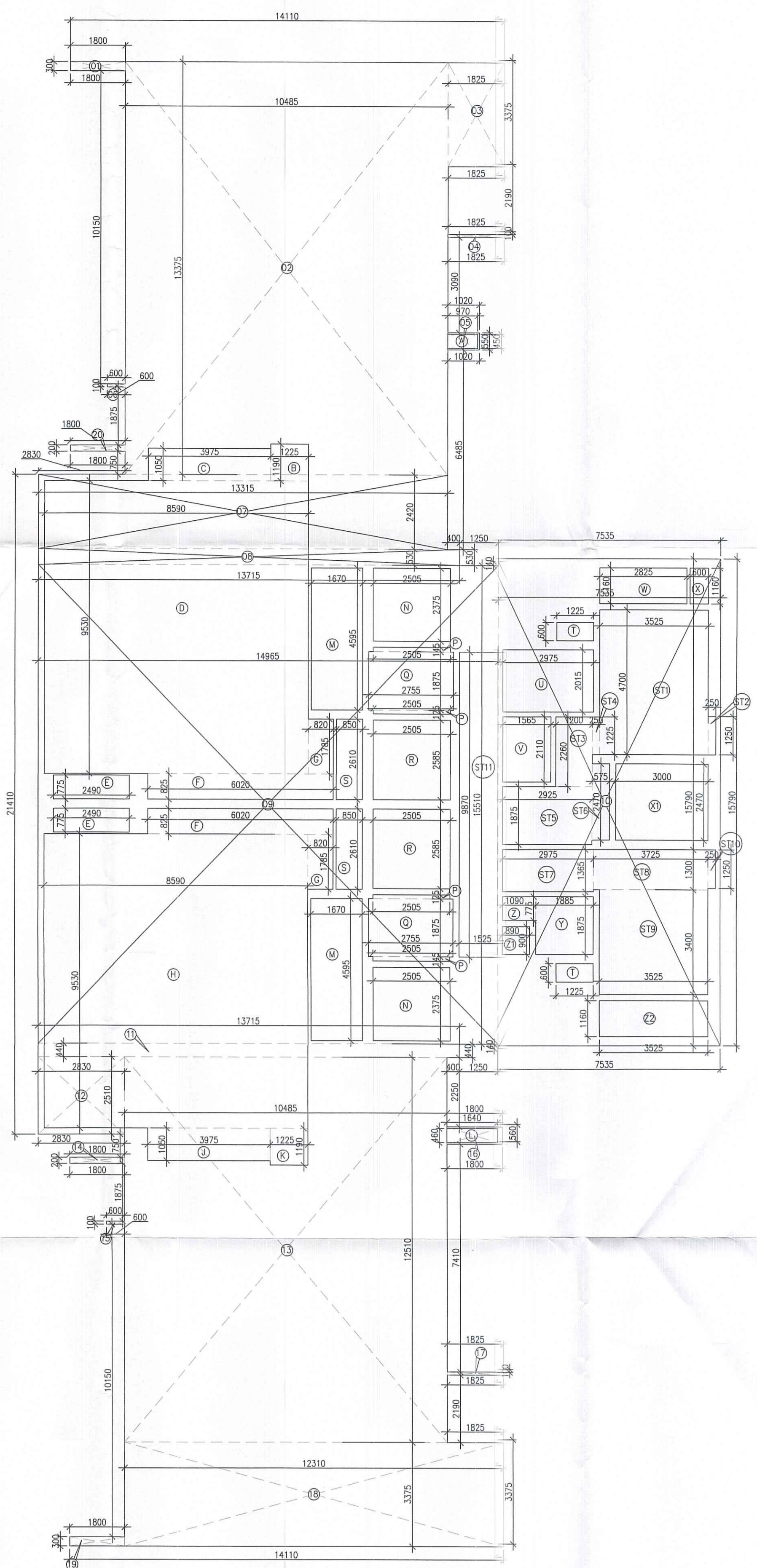


DUPLUX LOWER (1ST FLOOR PLAN)
 NO. OF UNIT - 2
 LVL. +7600
 TOWER 1



AREA CALCULATION
 LOWER DUPLUX

- 1 1100 SOIL PIPE
- 2 1100 WASTE PIPE
- 3 1100 VENT PIPE
- 4 1100 RAIN WATER PIPE FROM TERRACE
- 5 1100 RAIN WATER PIPE FROM BALCONY
- 6 DOMESTIC WATER DOWN TAKE PIPE
- 7 FLUSHING WATER DOWN TAKE PIPE
- 8 HYDRO-PNEUMATIC DOMESTIC WATER PIPE FOR TOP OF THREE FLOOR
- 9 DOMESTIC WATER RISER PIPE
- 10 FLUSHING WATER RISER PIPE

- LEGEND ->
- 1 1500 FIRE HYDRANT PIPE FOR LOWER ZONE
 - 2 1500 FIRE HYDRANT PIPE FOR MIDDLE ZONE
 - 3 1500 FIRE HYDRANT PIPE FOR UPPER ZONE
 - 4 1500 FIRE SPRINKLER PIPE FOR LOWER ZONE
 - 5 1500 FIRE SPRINKLER PIPE FOR MIDDLE ZONE
 - 6 1500 FIRE SPRINKLER PIPE FOR UPPER ZONE
 - 7 1500 FIRE SPRINKLER PIPE STAND FOR LOWER ZONE
 - 8 1500 FIRE SPRINKLER PIPE STAND FOR MIDDLE ZONE
 - 9 1500 FIRE SPRINKLER PIPE STAND FOR UPPER ZONE
 - 10 800 FHC DRINK PIPE

ROOM WINDOW SCHEDULE (LOWER-1)

S. NO.	TAGS	WIND	INTL	CEL	LOC	LOC	FIRE RATING
1	D	1000	2400	0	Handicap WC		
2	D1	1000	2400	0	M.Bedroom, Bedroom		
3	D2	900	2400	0	Handicap WC		
4	D3	800	2400	0	Toilet, Toilet, Study, P. Room, M. Toilet, Pantry		
5	D4	840	2400	0	Study		
EXTERNAL DOORS							
1	SD	930	Bottom	0	Living		
2	SD1	600	Bottom	0	Living		
3	SD2	3000	Bottom	0	M.Bedroom, Bedroom		
4	SD3	2800	Bottom	0	Bedroom 1		
5	SD4	2700	Bottom	0	Spring, Bedroom 1		
6	SD5	2600	Bottom	0	Study, Dining		
7	SD6	2300	Bottom	0	Family Lounge		
8	SD7	1800	Bottom	0	Bedroom 2		
9	SD8	1500	Bottom	0	Study		
10	SD9	1400	Bottom	0	Bedroom 2		
11	DW	2000	Bottom	0/1200	Kitchen		
12	DW1	2300	Bottom	0/1200	Kitchen		
13	DW2	1600	Bottom	0/900	Dining		
14	DW3	1600	Bottom	0/1200	Kitchen		
15	DW4	1200	Bottom	0/900	M.Balcony, Balcony		
GLAZINGS							
1	G11	930	Bottom	0	Lobby		
2	G12	930	Bottom	0	Lobby		
WINDOWS							
1	V1	1200	2400	150	TVR Door		
2	V2	900	2400	1200	T. Toilet, Service		
3	V3	800	2400	1200	T. Toilet, Service		
4	V4	600	2400	1200	Handicap WC, M.C.A. Toilet		
5	W	2845	2400	900	Staircase		
6	W1	2750	2400	900	Staircase		
7	W2	1600	2400	1200	M. Toilet		
8	W3	1200	2100	600	Staircase		
9	W4	800	2400	900	Stair		
10	W5	650	2400	1200	Dress		
11	W6	600	2400	1200	Dress		
FIRE DOORS AND WINDOW							
1	FD	1200	2400	0	Fire Exit	2hrs	
2	FD1	1200	2400	0	Fire Exit	2hrs	
3	FD2	1000	2400	0	Fire Exit	2hrs	
4	FD3	1000	2400	0	Fire Exit	2hrs	
5	FD4	900	2400	0	Fire Exit	2hrs	
6	FD5	800	2400	0	Fire Exit	2hrs	
7	FD6	1200	2400	0	Fire Exit	2hrs	
8	FD7	1025	2400	0	Fire Exit	2hrs	
ROOM WINDOW SCHEDULE (LOWER-2)							
S. NO.	TAGS	WIND	INTL	CEL	LOC	LOC	FIRE RATING
1	RF1	1000	Bottom	0	Fire Staircase, IT		
2	RF2	1000	Bottom	0	Fire Staircase		
3	RF3	1000	Bottom	0	Fire Staircase		
4	RF4	900	Bottom	0	Fire Staircase		
5	RF5	1025	Bottom	0	Fire Staircase		

FAR AREA CALCULATION OF LOWER DUPLUX - TOWER 1

Gr. No	Area	Length	Width	Area (SQM)	
1	1	1.800	0.300	0.540	
2	1	10.488	13.378	140.227	
3	1	1.800	3.378	6.080	
4	1	1.800	3.100	5.580	
5	1	1.000	0.800	0.800	
6	1	0.600	0.100	0.060	
7	1	13.315	2.400	32.222	
8	1	13.715	0.800	11.032	
9	1	14.880	16.110	240.107	
10	1	7.530	15.710	118.378	
11	1	13.715	1.440	19.752	
12	1	2.830	2.510	7.103	
13	1	10.488	12.310	129.167	
14	1	1.600	0.300	0.480	
15	1	0.600	0.100	0.060	
16	1	1.800	0.800	1.440	
17	1	1.800	0.100	0.180	
18	1	12.310	3.378	41.548	
19	1	1.800	1.440	2.592	
20	1	1.800	0.300	0.540	
TOTAL					728.878

STAIRCASE AREA CALCULATION

Gr. No	Area	Length	Width	Area (SQM)	
A	1	0.970	0.450	0.437	
B	1	1.225	1.160	1.428	
C	1	3.975	1.050	4.174	
D	1	8.500	0.930	7.905	
E	2	2.400	0.775	1.860	
F	2	0.020	0.825	0.017	
G	2	0.850	1.785	1.507	
H	1	8.500	0.930	7.905	
I	1	3.975	1.050	4.174	
J	1	1.225	1.160	1.428	
K	1	1.640	0.450	0.738	
L	2	1.670	4.595	7.654	
M	2	2.500	0.775	1.938	
N	2	2.500	0.775	1.938	
O	2	2.795	1.875	5.239	
P	2	2.500	2.210	5.525	
Q	2	2.500	2.210	5.525	
R	2	2.500	2.210	5.525	
S	2	2.500	2.210	5.525	
T	2	2.500	2.210	5.525	
U	1	2.975	0.215	0.639	
V	1	1.565	2.110	3.302	
W	1	2.825	1.160	3.277	
X	1	0.600	1.160	0.696	
Y	1	3.000	2.470	7.410	
Z	1	1.685	1.875	3.161	
aa	2	1.090	0.775	0.845	
ab	1	0.880	0.900	0.792	
ac	1	3.355	1.160	3.892	
TOTAL					288.738

NET FAR AREA OF LOWER DUPLUX FLOOR

NET FAR AREA OF LOWER DUPLUX FLOOR	=	GROSS - A	-	GROSS - B	-	GROSS - C
	=	728.878	-	63.056	-	280.738
GROSS - 1	=	382.888				
BUILT UP AREA - TOWER 1						
LOWER DUPLUX						
NET BUILT AREA OF LOWER DUPLUX FLOOR	=	GROSS - 1	+	GROSS - B		
	=	382.888	+	63.056		
GROSS - 2	=	446.944				
NON FAR AREA - TOWER 1						
LOWER DUPLUX						
NON FAR AREA OF LOWER DUPLUX FLOOR	=	GROSS - 2	-	GROSS - 1		
	=	446.942	-	382.888		
GROSS - 3	=	63.057				

Note :-
 1. BUILDING HAS AUTOMATIC SPRINKLER SYSTEM WHEREVER REQUIRED BY NBC.
 2. BUILDING WILL BE DESIGNED (STRUCTURES) AS PER RELEVANT IS CODES FOR EARTH QUAKE RESISTANCE.
 3. ALL BUILDING 100% POWER BACKUP.

PROJECT:
 PROPOSED BUILDING PLAN OF G.H. SITE NO.24 IN SECTOR-53 GURUGRAM OF AREA MEASURING 7.413 ACRES BEING DEVELOPED BY M/S GODREJ PROPERTIES LTD.

ASSOCIATES
 134-First Floor, Vipul Business Park, Sohna Road, Sector-48, Gurugram-122018(Hr.) (PH-9560794794,9871004573)

OWNER'S SEAL & SIGNATURE

For Godrej Properties Ltd.
 Authorized Signatory

ARCHITECT'S SEAL & SIGNATURE

Checked and found ok for public health
 FEB-2020
 TOWER-01
 DUPLEX LOWER
 1ST FLOOR PLAN
 AREA CALCULATION