

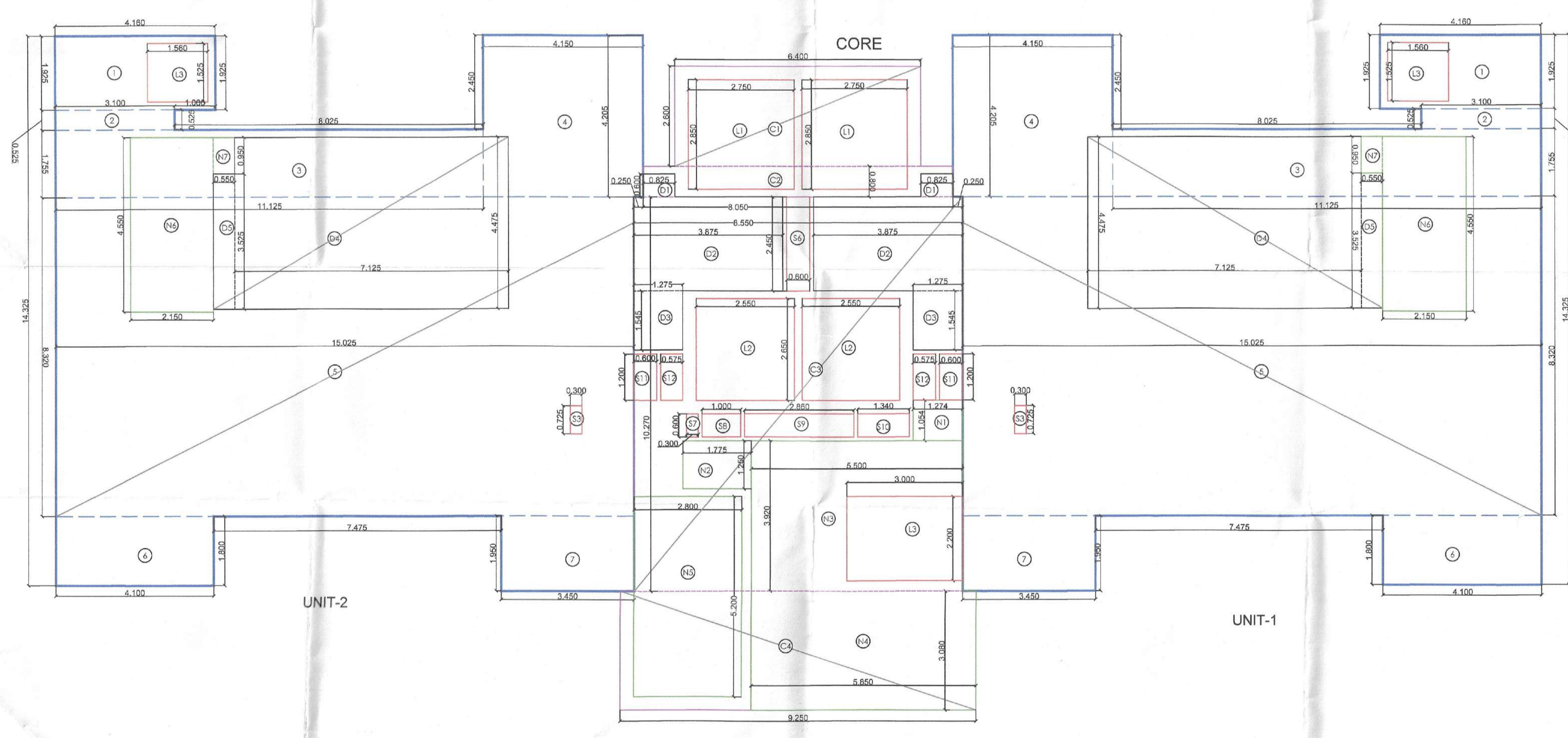
Sanctioned to be read with this office Form No. 3 DATED:

W. S. P. (H) Member Secretary B.P.A.C.
S. T. P. (G) Member B.P.A.C.
C. T. P. (H) Chairman B.P.A.C.
D. T. P. (H) Member B.P.A.C.
J. D. Member B.P.A.C.
J. D. (H) Member B.P.A.C.

TOWER - 2 UPPER PENTHOUSE LEVEL (LEVEL -39TH FLOOR) (VI +141.825M)

4 BHK UPPER PENTHOUSE LEVEL + SERVICE PERSONNEL UNIT

ELEVATION



TOWER - 2 UPPER PENTHOUSE AREA DIAGRAM (LEVEL -39TH FLOOR)

TOWER-2 3.5 FAR AREA AT UPPER PENTHOUSE UNIT 1 PER FLOOR
(All Distances are in Meter & Areas in Sqm)

ITEM	NO.S	WIDTH (MTR.)	LENGTH (MTR.)	AREA/SQ.M T ₁ = NO.X LENGTH X WIDTH
1	1	4.100	1.925	8.028
2	1	3.100	0.525	1.628
3	1	11.125	1.755	19.524
4	1	4.150	4.205	17.451
5	1	15.025	8.320	125.008
6	1	4.150	1.800	7.470
7	1	3.450	1.950	6.728
TOTAL(A)				185.728

REDUCTION (B)

ITEM	NO.S	WIDTH (MTR.)	LENGTH (MTR.)	AREA/SQ.M T ₂ = NO.X LENGTH X WIDTH
L3	1	1.500	1.525	2.288
S3	1	0.300	0.725	0.218
D4	1	7.125	4.475	31.884
D5	1	0.950	3.825	3.634
TOTAL				36.420

NON FAR AREA (C)

ITEM	NO.S	WIDTH (MTR.)	LENGTH (MTR.)	AREA/SQ.M T ₃ = NO.X LENGTH X WIDTH
N6	1	2.150	4.550	9.783
N7	1	0.950	0.950	0.903
TOTAL				10.305

UNIT-FAR AREA CALCULATION = ADDITION(A) - (DEDUCTION (B) - NON FAR AREA (C))

= 185.728 - 36.420 - 10.305 = **139.002 SQM**

FAR AREA AT UPPER PENTHOUSE UNIT 2 PER FLOOR
(All Distances are in Meter & Areas in Sqm)

ITEM	NO.S	WIDTH (MTR.)	LENGTH (MTR.)	AREA/SQ.M T ₁ = NO.X LENGTH X WIDTH
1	1	4.100	1.925	8.028
2	1	3.100	0.525	1.628
3	1	11.125	1.755	19.524
4	1	4.150	4.205	17.451
5	1	15.025	8.320	125.008
6	1	4.150	1.800	7.470
7	1	3.450	1.950	6.728
TOTAL(A)				185.728

REDUCTION (B)

ITEM	NO.S	WIDTH (MTR.)	LENGTH (MTR.)	AREA/SQ.M T ₂ = NO.X LENGTH X WIDTH
L3	1	1.500	1.525	2.288
S3	1	0.300	0.725	0.218
D4	1	7.125	4.475	31.884
D5	1	0.950	3.825	3.634
TOTAL				36.420

NON FAR AREA (C)

ITEM	NO.S	WIDTH (MTR.)	LENGTH (MTR.)	AREA/SQ.M T ₃ = NO.X LENGTH X WIDTH
N6	1	2.150	4.550	9.783
N7	1	0.950	0.950	0.903
TOTAL				10.305

CORE FAR AREA AT UPPER PENTHOUSE
(All Distances are in Meter & Areas in Sqm)

ITEM	NO.S	WIDTH (MTR.)	LENGTH (MTR.)	AREA/SQ.M T ₁ = NO.X LENGTH X WIDTH
C1	1	6.400	2.600	16.640
C2	1	8.050	0.900	7.245
C3	1	8.850	10.370	91.800
C4	1	9.250	3.080	28.490
TOTAL(A)				139.375

SERVICE SHAFT (C)

ITEM	NO.S	WIDTH (MTR.)	LENGTH (MTR.)	AREA/SQ.M T ₂ = NO.X LENGTH X WIDTH
L1	2	2.750	2.850	15.675
L2	2	2.550	2.650	13.515
D1	2	0.825	0.600	0.990
D2	2	3.875	2.450	18.988
D3	2	1.275	1.545	3.940
S6	1	0.600	2.450	1.470
S7	1	0.300	0.600	0.180
S8	1	1.000	0.600	0.600
S9	1	2.850	0.600	1.710
S10	1	1.340	0.600	0.804
S11	1	0.875	1.200	1.050
S12	1	0.600	1.200	0.720
TOTAL				98.387

NON FAR AREA (STAIRCASE) (D)

ITEM	NO.S	WIDTH (MTR.)	LENGTH (MTR.)	AREA/SQ.M T ₃ = NO.X LENGTH X WIDTH
N1	1	1.274	1.054	1.343
N2	1	1.775	1.250	2.219
N3	1	5.550	3.050	16.823
N4	1	5.850	3.080	18.028
N5	1	2.920	5.200	15.284
TOTAL NON FAR AREA (D)				67.700

NON FAR AREA (DUCTION) (E)

ITEM	NO.S	WIDTH (MTR.)	LENGTH (MTR.)	AREA/SQ.M T ₄ = NO.X LENGTH X WIDTH
L3	1	3.000	2.200	6.600
NON FAR AREA (E)				6.600

TOTAL CORE FAR AREA CALCULATION = ADDITION(A) - (SERVICE SHAFT (C) + NONFAR AREA (D) - NON FAR AREA (E))

= 139.375 - 116.987 = **22.392 SQM**

TOTAL UPPER PENTHOUSE FLOOR FAR AREA CALCULATION = TOTAL UPPER PENTHOUSE FLOOR UNIT 1 FAR AREA + (TOTAL UPPER PENTHOUSE FLOOR UNIT 2 FAR AREA) + (TOTAL UPPER PENTHOUSE CORE FAR AREA)

= 139.002 + 139.002 + 22.392 = **300.395 SQM**

Note:-

- BUILDING HAS AUTOMATIC SPRINKLER SYSTEM WHEREVER REQUIRED BY NBC.
- BUILDING WILL BE DESIGNED (STRUCTURES) AS PER RELEVANT IS CODES FOR EARTH QUAKE RESISTANCE.
- MECHANICAL VENTILATION WITH 100% POWER BACK-UP FOR SERVICE AREAS.

PROJECT:

PROPOSED GROUP HOUSING COLONY MEASURING 5.875 ACRES UNDER TOD POLICY DATED 09.02.2016 (LICENSE NO. 50 OF 2019 DATED 07.03.2019) IN SECTOR -49, GURUGRAM BEING DEVELOPED BY ELAN ENCLAVE PRIVATE LIMITED UNDER COLLABORATION WITH V.A. AGRICULTURE PVT LTD

ARCHITECT'S SEAL & SIGNATURE: GIAN P. MATHUR, ARCHITECT, B. Arch., M.A., I.T.A. CA No. 803799

OWNER'S SEAL & SIGNATURE: For ELAN ENCLAVE PRIVATE LIMITED

JULY-2025. Scale: 1:75

Drawing Title: TOWER - 2 PENTHOUSE LVL-2 LAYOUT (LEVEL -39TH FLOOR) & AREA DETAIL

Drawing No: A-T2-07