

S.T.P. (HQ) Member Secretary B.P.A.C.
 S.T.P. (G) Member B.P.A.C.
 C.N.E. (HP) Chairman B.P.A.C.

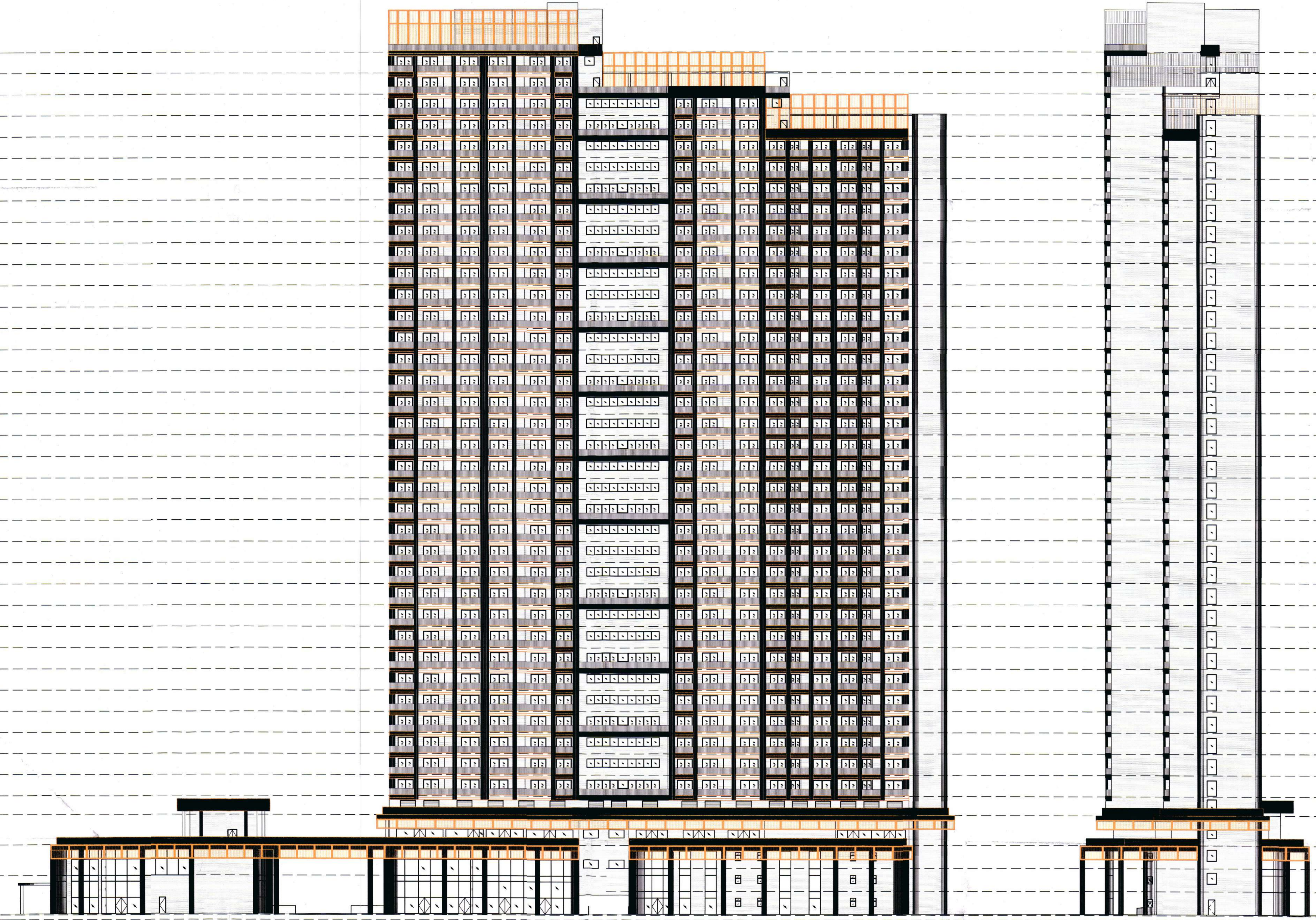
AD
 PA
 ATP
 ATP (HQ)

GURPREET J.D. (HQ)
 Member B.P.A.C.

J.D. (HQ) Member B.P.A.C.

SANCTIONED TO BE READ WITH THIS OFFICE MEMO NO.: DATED:


TERRACE FLOOR
 106 -134.000
 37TH FLOOR
 FFL -131.000
 36TH FLOOR
 FFL -128.500
 35TH FLOOR
 FFL -126.000
 34TH FLOOR
 FFL -123.500
 33RD FLOOR
 FFL -121.000
 32ND FLOOR
 FFL -118.500
 BASE FLOOR
 FFL -115.000
 30TH FLOOR
 FFL -112.500
 29TH FLOOR
 FFL -110.000
 28TH FLOOR
 FFL -107.500
 27TH FLOOR
 FFL -105.000
 26TH FLOOR
 FFL -102.500
 25TH FLOOR
 FFL -100.000
 REFUGE FL.
 24TH FLOOR
 FFL -97.500
 23RD FLOOR
 FFL -95.000
 22ND FLOOR
 FFL -92.500
 21ST FLOOR
 FFL -90.000
 20TH FLOOR
 FFL -87.500
 19TH FLOOR
 FFL -85.000
 18TH FLOOR
 FFL -82.500
 17TH FLOOR
 FFL -80.000
 16TH FLOOR
 FFL -77.500
 REFUGE FL.
 15TH FLOOR
 FFL -75.000
 14TH FLOOR
 FFL -72.500
 13TH FLOOR
 FFL -70.000
 12TH FLOOR
 FFL -67.500
 11TH FLOOR
 FFL -65.000
 10TH FLOOR
 FFL -62.500
 9TH FLOOR
 FFL -60.000
 8TH FLOOR
 FFL -57.500
 7TH FLOOR
 FFL -55.000
 6TH FLOOR
 FFL -52.500
 5TH FLOOR
 FFL -50.000
 4TH FLOOR
 FFL -47.500
 3RD FLOOR
 FFL -45.000
 SERVICE FLOOR
 FFL -42.500
 2ND FLOOR
 FFL -40.000
 1ST FLOOR
 FFL -37.500
 GROUND FLOOR
 FFL -35.000
 INTERNAL ROAD LVL
 RL -32.750
 EXTERNAL ROAD LVL
 RL -30.000



ELEVATION C

ELEVATIONS D

CLUB 2ND FLOOR
 FFL -37.100
 PRIMARY SCHOOL 2ND FLOOR
 FFL -48.100
 PRIMARY SCHOOL 1ST FLOOR
 FFL -45.500
 PRIMARY SCHOOL GROUND FLOOR
 FFL -40.000
 EXTERNAL ROAD LVL
 RL -30.000

PROJECT	DEVELOPER	DESIGN CONSULTANTS	SERVICES CONSULTANTS	STRUCTURAL CONSULTANTS	ARCHITECT ON RECORD	TITLE	SHEET NO	ARCHITECT SIGNATURE	OWNER SIGNATURE
PROPOSED GROUP HOUSING COLONY MIX LAND USE (93.95% RESIDENTIAL COMPONENT + 6.05% COMMERCIAL COMPONENT) FOR AN AREA MEASURING 18.2375 ACRES (LICENCE NO. 50 OF 2025, DATED 09/04/2025) IN SECTOR 36, GURUGRAM, HARYANA.	MAX ESTATES GURGAON TWO LIMITED LEVEL 20, MAX TOWERS, C-001/A-1, SECTOR - 16B, NOIDA, UP - 201301	RSP Design Consultants Pvt. Ltd. Unit 103, Bestech Business Tower, Sector 48, Sohna Road, Gurugram - 122018. Head Office No. 30, Museum Road, Bangalore - 560001. Tel: 25596868, Fax: 25596818, Email: rsp@rspindia.net, Web: www.rspindia.net	AEON INTEGRATED BUILDING DESIGN CONSULTANTS LLP A-122, 6th Floor, Sector 136, Noida, UP - 201305 Tel: 0122-6909526	NNC Design International G-70, Second Floor, Jaswant Plaza, Shaheen Bagh, Okhla, New Delhi - 110025. Tel: 011-26940734/6, Fax: 011-26940734, Email: nnc.mail7@gmail.com	CONTINENTAL DESIGN STUDIO #1006, 1st Floor, Sector - 4, Panchkula, Haryana - 134112 Tel: 0172-4014404 Email: continentaldesignstudio@gmail.com	TOWER A	33 (A1)	 RATTAN PAL SINGH ARCHITECT CA20041/51128	