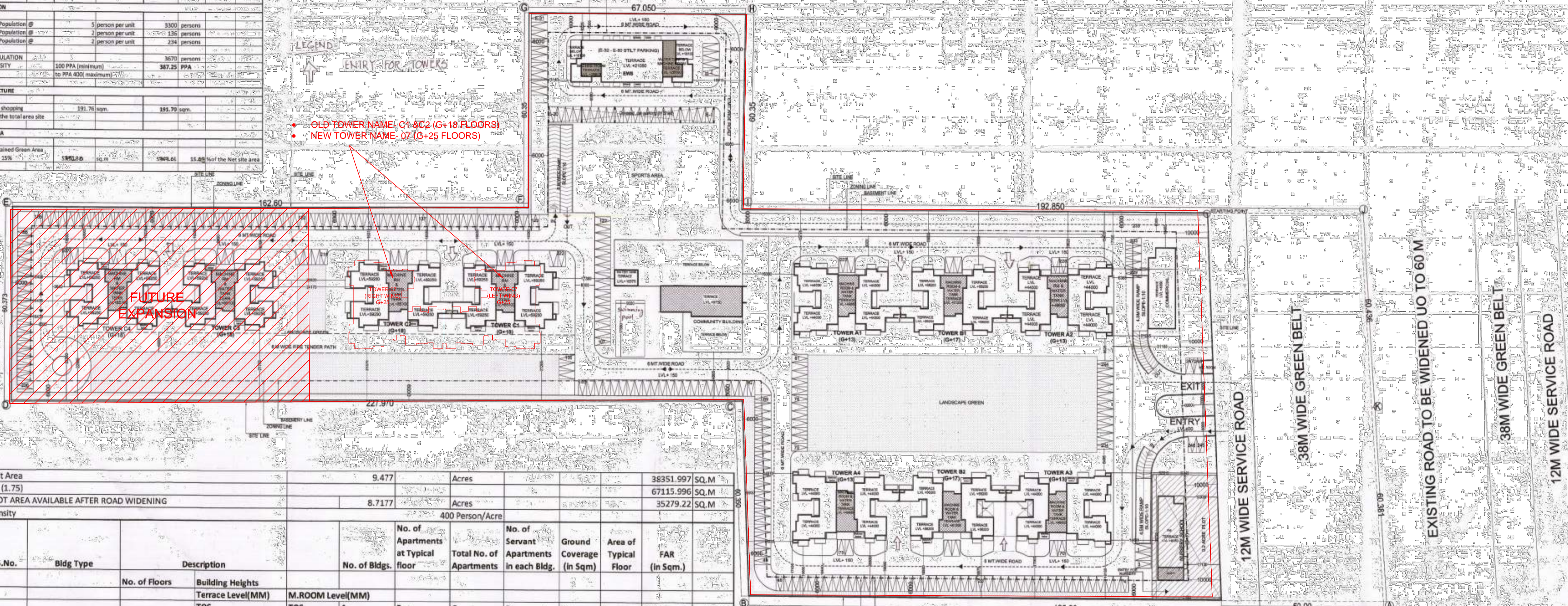


ABSTRACT		18.36 ACRES	15520.62 sq m
TOTAL SITE AREA		18.36 ACRES	15520.62 sq m
SITE AREA AFTER ROAD WIDENING		9.477 ACRES	8150.911 sq m
PARAMETERS FOR HOUSING			
PARAMETER	PERMISSIBLE / REQUIRED	PROPOSED	TOTAL
F.A.R.	175%	134.9%	134.9%
GROUND COVERAGE	35%	20.9%	20.9%
No. of TOTAL UNITS	660	660	660
No. of UNITS (Service Personal)	66	66	66
No. of UNITS (EWS)	117	117	117
POPULATION			
660 Population @ 5 person per unit		3300 persons	
66 Population @ 2 person per unit		132 persons	
117 Population @ 2 person per unit		234 persons	
TOTAL POPULATION		3670 persons	
TOTAL DENSITY	200 PPA (minimum) to PPA 400 (maximum)	387.25 PPA	
INFRASTRUCTURE			
Convenient shopping	191.76 sqm	191.76 sqm	
GREEN AREA			
Total Maintained Green Area	198.62 sqm	198.62 sqm	
Required @ 55%	198.62 sqm	198.62 sqm	

NOTE: CAR NO. E-1 TO E-50 ARE DEDICATED PARKING FOR EWS.



Plot Area		9.477	Acres	38351.997 SQ.M					
FSI (1.75)				67115.996 SQ.M					
PLOT AREA AVAILABLE AFTER ROAD WIDENING		8.7177	Acres	35279.22 SQ.M					
Density			400 Person/Acre						
S.No.	Bldg Type	Description	No. of Bldgs.	No. of Apartments at Typical floor	Total No. of Apartments	No. of Servant Apartments in each Bldg.	Ground Coverage (in Sqm)	Area of Typical Floor	FAR (in Sqm.)
1	Tower-A1 (1)	(G+13)	1	4	55	0	630.42	405.96	5627.25
2	Tower-B1 (2)	(G+17)	1	4	70	0	646.04	361.03	6340.70
3	Tower-A2 (3)	(G+13)	1	4	55	0	630.42	405.96	5627.25
4	Tower-A3 (4)	(G+13)	1	4	55	0	630.42	405.96	5627.25
5	Tower-B2 (5)	(G+17)	1	4	70	0	646.04	361.03	6340.70
6	Tower-A4 (6)	(G+13)	1	4	55	0	630.42	405.96	5627.25
7	Tower-C1 (7)	(G+18)	1	4	75	17	566.57	377.56	7101.51
8	Tower-C2 (8)	(G+18)	1	4	75	17	566.57	377.56	7101.51
9	Tower-C3 (9)	(G+18)	1	4	75	17	566.57	377.56	7101.51
10	Tower-C4 (10)	(G+18)	1	4	75	17	566.57	377.56	7101.51
11	COMMUNITY BLDG.	G+1	1	---	---	---	986.37	406.38	473.16
12	SHOPPING	(G)	1	---	---	---	242.86	191.70	191.70
13	EWS	(S+6)	1	---	---	---	503.85	471.2	2840.22
14	NURSERY SCHOOL	G+1	1	---	---	---	210.44	200.83	
15	BASEMENT		1	---	---	---			
GrandTotal =					777	68	8023.56		67101.55

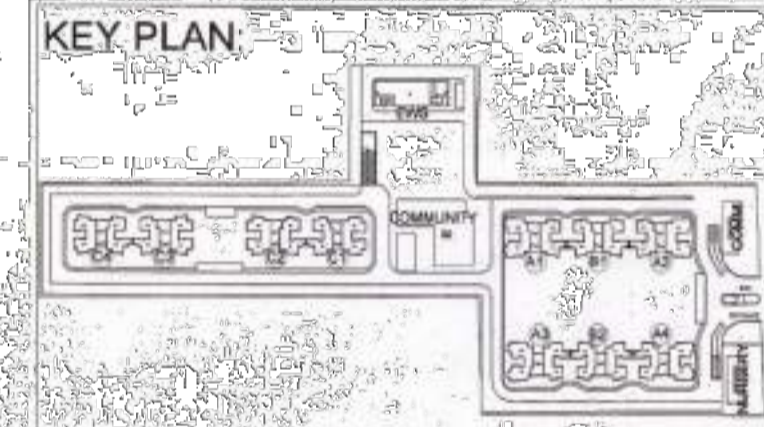
Ashiana Group Housing - SEC-2					
BUILT-UP AREA STATEMENT					
S.No.	Building Type	Description	FAR (in Sqm.)	NON FAR (in Sqm.)	B/UP AREA (in sq.m)
1	Tower-A1 (1)	(G+13)	5627.25	577.00	6204.25
2	Tower-B1 (2)	(G+17)	6340.70	805.66	7146.36
3	Tower-A2 (3)	(G+13)	5627.25	577.00	6204.25
4	Tower-A3 (4)	(G+13)	5627.25	577.00	6204.25
5	Tower-B2 (5)	(G+17)	6340.70	805.66	7146.36
6	Tower-A4 (6)	(G+13)	5627.25	577.00	6204.25
7	Tower-C1 (7)	(G+18)	7101.51	640.06	7741.58
8	Tower-C2 (8)	(G+18)	7101.51	640.06	7741.58
9	Tower-C3 (9)	(G+18)	7101.51	640.06	7741.58
10	Tower-C4 (10)	(G+18)	7101.51	640.06	7741.58
11	COMMUNITY BLDG.	G+1	473.16	618.32	1091.48
12	SHOPPING	(G)	191.70	51.16	266.97
13	EWS	(S+6)	2840.22	549.95	3383.71
14	NURSERY SCHOOL	G+1	404.28	37.28	441.55
15	BASEMENT		28288.30		28288.30
Grand Total =			67101.55	36024.58	103548.05

SITE AREA		38351.997 SQ.M
MINIMUM REQUIRED GREEN AREA @15%		5752.80 SQ.M
GREEN AREA PROPOSED		5761.04 SQ.M
		15.03%

PARKING CALCULATION			
A	TOTAL REGULAR DWELLING UNIT	660	no
B	PARKING REQ. @ 1.5 ECS PER D.U.	990	ECS
C	COVERED PARKING REQ. 75% OF TOTAL PARKING	742.5	ECS
D	OPEN PARKING REQUIRED	247.5	ECS
1	OPEN PARKING PROVIDED	248	ECS
2	COV. PARKING PROVIDED IN BASEMENT BY AREA @35 SQM PER ECS	26684.09	SQ.M
		762.40	ECS
PARKING REQUIREMENT FOR EWS - 5% OF TOTAL PARKING		50	ECS
CAR PARKING PROVIDED IN STILT BY AREA @ 30 QM		434.47	SQ.M
STILT AREA AVAILABLE FOR PARKING		14.00	ECS
a	PARKING ACHIEVED BY AREA @ 30 SQM IN STILT	20.00	ECS
b	PARKING PROVIDED IN SHED =500SQ @ 25 SQM PER ECS	16.00	ECS
c	OPEN PARKING PROVIDED	50.00	ECS
B	TOTAL PARKING PROVIDED FOR EWS	1060.40	ECS
	TOTAL PARKING PROVIDED (1+2+3)	1060.40	ECS
		SAY - 1060	ECS

STILT AREA DETAIL			
S.No.	Bldg Type	Description	STILTS (in Sqm.)
1	Tower-A1 (1)	(G+13)	275.66
2	Tower-B1 (2)	(G+17)	442.92
3	Tower-A2 (3)	(G+13)	275.66
4	Tower-A3 (4)	(G+13)	275.66
5	Tower-B2 (5)	(G+17)	442.92
6	Tower-A4 (6)	(G+13)	275.66
7	Tower-C1 (7)	(G+18)	261.13
8	Tower-C2 (8)	(G+18)	261.13
9	Tower-C3 (9)	(G+18)	261.13
10	Tower-C4 (10)	(G+18)	261.13
11	COMMUNITY BLDG.	G+1	---
12	SHOPPING	(G)	---
13	EWS	(S+6)	494.47
14	NURSERY SCHOOL	G+1	---
TOTAL			1269.90

POPULATION DENSITY CALCULATION										
Plot Area		9.477	Acres							
Permissible Density		100-400	PPA	Achieved density		387.25				
S.No.	Bldg Type	No. of Floors	No. of Bldgs.	No. of Apartments at Typical floor	Total No. of Apartments	POPULATION BREAK UP				TOTAL POPULATION
						Main Population	EWS Population	Service Population		
						2 Person/Unit	2 Person/Unit	2 Person/Unit		
1	Tower-A1 (1)	(G+13)	1	4	55	0	275	0	0	275
2	Tower-B1 (2)	(G+17)	1	4	70	0	350	0	0	350
3	Tower-A2 (3)	(G+13)	1	4	55	0	275	0	0	275
4	Tower-A3 (4)	(G+13)	1	4	55	0	275	0	0	275
5	Tower-B2 (5)	(G+17)	1	4	70	0	350	0	0	350
6	Tower-A4 (6)	(G+13)	1	4	55	0	275	0	0	275
7	Tower-C1 (7)	(G+18)	1	4	75	17	375	34	34	409
8	Tower-C2 (8)	(G+18)	1	4	75	17	375	34	34	409
9	Tower-C3 (9)	(G+18)	1	4	75	17	375	34	34	409
10	Tower-C4 (10)	(G+18)	1	4	75	17	375	34	34	409
11	COMMUNITY BLDG.	G+1	1	---	---	---	---	---	---	---
12	SHOPPING	(G)	1	---	---	---	---	---	---	---
13	EWS	(S+6)	1	---	---	---	---	---	---	---
14	NURSERY SCHOOL	G+1	1	---	---	---	---	---	---	---
15	BASEMENT		1	---	---	---	---	---	---	---
TOTAL						777	3806	234	195	3670
DENSITY ACHIEVED										387.25 PPA



JOB TITLE:
Proposed Building Plan of Group Housing Colony area measuring 10.25 acres (Lic. No. 16 of 2014 dated 10.06.2014) in Sec-2, Sohna, being developed by PSL INFRA TECH PVT. LTD.

EXECUTIVE ARCHITECTS:
DESIGN FORUM INTERNATIONAL
K-47 KAILASH COLONY, NEW DELHI-110048
PHONE: 011-46556600, FAX 46556601

CLIENT:
PSL INFRA TECH PVT. LTD.

DRAWING TITLE:
SITE PLAN

OWNER'S SIGN:

Checked and Approved by: *[Signature]* For PSL Infotech Pvt. Ltd.
Authorised Signatory

ARCHITECT'S SIGN:
[Signature]
ANU TEWATA
B.Arch, (P) No.1, M.C.A.
GANDHI 1979.

SCALE: 1:500
NORTH:

DATE:

DRAWING NO.: 1