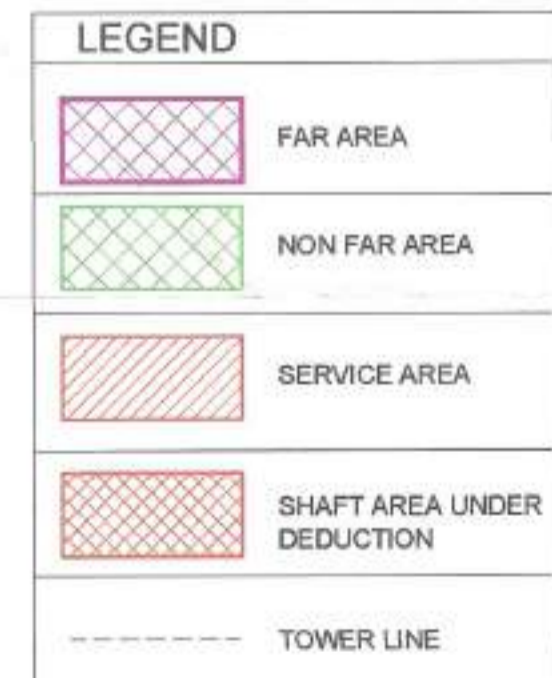


**LEGEND-**

SYB	TITLE	W	H	REMARKS
S1	SLIDING DOOR	3010	2500	= 00
S2	SLIDING DOOR	3540	2500	= 00
S3	SLIDING DOOR	3940	2500	= 00
S4	SLIDING DOOR	3410	2500	= 00
S5	SLIDING DOOR	3338	2500	= 00
S6	SLIDING DOOR	2960	2500	= 00
S7	SLIDING DOOR	2850	2500	= 00
S8	SLIDING DOOR	2700	2500	= 00
S9	SLIDING DOOR	2590	2500	= 00
S10	SLIDING DOOR	2440	2500	= 00
S11	SLIDING DOOR	1825	2500	= 00
S12	SLIDING DOOR	1475	2500	= 00
S13	SLIDING DOOR	1450	2500	= 00
S14	SLIDING DOOR	1300	2500	= 00
S15	SLIDING DOOR	1300	2500	= 00
S16	SLIDING DOOR	1300	2500	= 00
S17	SLIDING DOOR	1300	2500	= 00
S18	SLIDING DOOR	1300	2500	= 00
S19	SLIDING DOOR	1300	2500	= 00
S20	SLIDING DOOR	1300	2500	= 00
S21	SLIDING DOOR	1300	2500	= 00
S22	SLIDING DOOR	1300	2500	= 00
S23	SLIDING DOOR	1300	2500	= 00
S24	SLIDING DOOR	1300	2500	= 00
S25	SLIDING DOOR	1300	2500	= 00
S26	SLIDING DOOR	1300	2500	= 00
S27	SLIDING DOOR	1300	2500	= 00
S28	SLIDING DOOR	1300	2500	= 00
S29	SLIDING DOOR	1300	2500	= 00
S30	SLIDING DOOR	1300	2500	= 00
S31	SLIDING DOOR	1300	2500	= 00
S32	SLIDING DOOR	1300	2500	= 00
S33	SLIDING DOOR	1300	2500	= 00
S34	SLIDING DOOR	1300	2500	= 00
S35	SLIDING DOOR	1300	2500	= 00
S36	SLIDING DOOR	1300	2500	= 00
S37	SLIDING DOOR	1300	2500	= 00
S38	SLIDING DOOR	1300	2500	= 00
S39	SLIDING DOOR	1300	2500	= 00
S40	SLIDING DOOR	1300	2500	= 00
S41	SLIDING DOOR	1300	2500	= 00
S42	SLIDING DOOR	1300	2500	= 00
S43	SLIDING DOOR	1300	2500	= 00
S44	SLIDING DOOR	1300	2500	= 00
S45	SLIDING DOOR	1300	2500	= 00
S46	SLIDING DOOR	1300	2500	= 00
S47	SLIDING DOOR	1300	2500	= 00
S48	SLIDING DOOR	1300	2500	= 00
S49	SLIDING DOOR	1300	2500	= 00
S50	SLIDING DOOR	1300	2500	= 00
S51	SLIDING DOOR	1300	2500	= 00
S52	SLIDING DOOR	1300	2500	= 00
S53	SLIDING DOOR	1300	2500	= 00
S54	SLIDING DOOR	1300	2500	= 00
S55	SLIDING DOOR	1300	2500	= 00
S56	SLIDING DOOR	1300	2500	= 00
S57	SLIDING DOOR	1300	2500	= 00
S58	SLIDING DOOR	1300	2500	= 00
S59	SLIDING DOOR	1300	2500	= 00
S60	SLIDING DOOR	1300	2500	= 00
S61	SLIDING DOOR	1300	2500	= 00
S62	SLIDING DOOR	1300	2500	= 00
S63	SLIDING DOOR	1300	2500	= 00
S64	SLIDING DOOR	1300	2500	= 00
S65	SLIDING DOOR	1300	2500	= 00
S66	SLIDING DOOR	1300	2500	= 00
S67	SLIDING DOOR	1300	2500	= 00
S68	SLIDING DOOR	1300	2500	= 00
S69	SLIDING DOOR	1300	2500	= 00
S70	SLIDING DOOR	1300	2500	= 00
S71	SLIDING DOOR	1300	2500	= 00
S72	SLIDING DOOR	1300	2500	= 00
S73	SLIDING DOOR	1300	2500	= 00
S74	SLIDING DOOR	1300	2500	= 00
S75	SLIDING DOOR	1300	2500	= 00
S76	SLIDING DOOR	1300	2500	= 00
S77	SLIDING DOOR	1300	2500	= 00
S78	SLIDING DOOR	1300	2500	= 00
S79	SLIDING DOOR	1300	2500	= 00
S80	SLIDING DOOR	1300	2500	= 00
S81	SLIDING DOOR	1300	2500	= 00
S82	SLIDING DOOR	1300	2500	= 00
S83	SLIDING DOOR	1300	2500	= 00
S84	SLIDING DOOR	1300	2500	= 00
S85	SLIDING DOOR	1300	2500	= 00
S86	SLIDING DOOR	1300	2500	= 00
S87	SLIDING DOOR	1300	2500	= 00
S88	SLIDING DOOR	1300	2500	= 00
S89	SLIDING DOOR	1300	2500	= 00
S90	SLIDING DOOR	1300	2500	= 00
S91	SLIDING DOOR	1300	2500	= 00
S92	SLIDING DOOR	1300	2500	= 00
S93	SLIDING DOOR	1300	2500	= 00
S94	SLIDING DOOR	1300	2500	= 00
S95	SLIDING DOOR	1300	2500	= 00
S96	SLIDING DOOR	1300	2500	= 00
S97	SLIDING DOOR	1300	2500	= 00
S98	SLIDING DOOR	1300	2500	= 00
S99	SLIDING DOOR	1300	2500	= 00
S100	SLIDING DOOR	1300	2500	= 00



**PLUMBING LEGEND**

S.NO.	DESCRIPTION
(1)	100Ø SOIL & VENT PIPE
(2)	100Ø WASTE & VENT PIPE
(3)	100Ø ANTISYPHONAGE PIPE
(4)	110 OD RAIN WATER PIPE
(5)	160 OD RAIN WATER PIPE
(6)	DOMESTIC WATER SUPPLY DOWN TAKE FOR TOP FOUR FLOOR (36-33)
(7)	DOMESTIC WATER SUPPLY DOWN TAKE FOR (32-17) FLOOR
(8)	DOMESTIC WATER SUPPLY DOWN TAKE FOR (16-GRO.) FLOOR
(9)	FLUSHING WATER SUPPLY DOWN TAKE FOR (36-24) FLOOR
(10)	FLUSHING WATER SUPPLY DOWN TAKE FOR (23-12) FLOOR
(11)	FLUSHING WATER SUPPLY DOWN TAKE FOR (11-GROUND) FLOOR
(12)	DOMESTIC WATER RISER PIPE TO OHT
(13)	FLUSHING WATER RISER PIPE TO OHT

**PLUMBING LEGEND**

S.NO.	DESCRIPTION
(A)	150Ø FIRE PIPE LOWE ZONE BASEMENT TO 9th FLOOR
(B)	150Ø FIRE PIPE MIDDLE ZONE 10th TO 23rd FLOOR
(C)	150Ø FIRE PIPE HIGH ZONE 24th TO TERRACE LVL.
(D)	150Ø SPRINKLER PIPE LOWE ZONE BASEMENT TO 9th FLOOR
(E)	150Ø SPRINKLER PIPE MIDDLE ZONE 10th TO 23rd FLOOR
(F)	150Ø SPRINKLER PIPE HIGH ZONE 24th TO TERRACE LVL.
(G)	150Ø ALTERNATE SPRINKLER PIPE LOWE ZONE BASEMENT TO 9th FLOOR
(H)	150Ø ALTERNATE SPRINKLER PIPE MIDDLE ZONE 10th TO 23rd FLOOR
(J)	150Ø ALTERNATE SPRINKLER PIPE HIGH ZONE 24th TO TERRACE LVL.
(K)	150Ø FIRE DOWN COMER PIPE
(L)	80Ø DRAIN PIPE

HORIZONTAL PIPE CONNECTIONS SHALL BE AS FOLLOWS.

FROM WASH BASIN TO FT	32Ø PIPE
FROM SINK TO FT	40Ø PIPE
FROM FD TO FT	50Ø PIPE
FROM FT TO VERTICAL STACK	100Ø PIPE
FROM WC TO VERTICAL STACK	100Ø PIPE

APPROVED  
MEMO NO: 50032  
DATED: 31/12/25

**FAR AREA OF TOWER TYPE - 1 AT STILT FLOOR LEVEL**

TAG	LENGTH (L) in	WIDTH (W) in	NO.S (N)	AREA (L x W x N)
A	37.240	31.675	1	1179.577
<b>TOTAL (A)</b>				<b>1179.577</b>

**DEDUCTIONS**

TAG	LENGTH (L) in	WIDTH (W) in	NO.S (N)	AREA (L x W x N)
1	5.640	5.260	2	59.333
2	1.825	7.640	2	27.886
3	4.590	0.890	2	8.170
4	10.900	3.655	1	39.840
5	2.765	0.890	2	4.922
6	3.815	5.275	2	40.248
7	12.865	0.425	2	10.935
8	2.900	4.675	2	27.115
9	2.640	4.650	2	24.552
10	6.725	3.655	1	24.580
<b>TOTAL (D)</b>				<b>267.581</b>

**NON FAR AREA**

TAG	LENGTH (L) in	WIDTH (W) in	NO.S (N)	AREA (L x W x N)
S1	1.890	1.995	1	3.771
S2	0.080	0.895	1	0.072
<b>TOTAL (N)</b>				<b>3.842</b>

**FAR-ENTRANCE LOBBY & SHAFTS**

TAG	LENGTH (L) in	WIDTH (W) in	NO.S (N)	AREA (L x W x N)
L1	8.380	6.550	1	54.889
L2	7.860	2.350	1	18.471
L3	9.460	4.650	1	43.989
L4	11.650	2.395	1	27.902
L5	9.685	1.500	1	14.528
L6	9.760	2.930	1	28.597
L7	7.620	6.100	1	46.482
L8	11.510	5.200	1	59.852
L9	1.840	2.395	1	4.407
L10	4.625	4.135	1	19.124
L11	1.750	0.590	4	4.130
L12	1.150	0.100	4	0.460
L13	0.300	0.250	2	0.150
L14	0.260	0.250	4	0.260
L15	1.750	0.615	2	2.153
L16	0.750	0.060	4	0.180
L17	0.850	0.650	4	2.210
L18	1.750	0.990	2	3.465
<b>TOTAL (B)</b>				<b>331.248</b>

**TOTAL FAR FOR LOBBY (F) = (B-S1-S2) = 327.406**

**TOTAL NON FAR (NF) = (A-D-L) = 584.591**

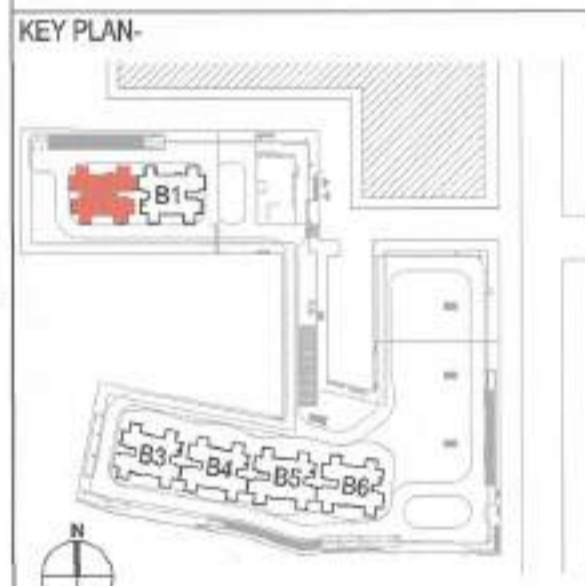
**TOTAL COVERED AREA = (F + NF) = 911.996**

**GROUND COVERAGE AREA (GC) = (F + NF) = 911.996**

S.T.P.(HO) Member Secretary B.P.A.C.  
 S.T.P.(G) Member B.P.A.C.  
 C.E.P.(HR) Chairman B.P.A.C.  
 DTP(HQ) / ATP(HQ)  
 P.A. / A.T.P.  
 DINESH KUMAR PA(HQ)  
 Checked and found ok for Public Health (Internal) Service only subject to comments in forwarding letter No. 331622 dated 26/11/25  
 Supervising Engineer (HQ) for Civil Engineer-I H.S.V.P., Panchkula  
 Member B.P.A.C.

**NOTE-**

- BUILDING HAS AUTOMATIC SPRINKLER SYSTEM WHEREVER REQUIRED BY NBC.
- BUILDING WILL BE DESIGNED (STRUCTURES) AS PER RELEVANT IS CODES FOR EARTH QUAKE RESISTANCE.
- 100% POWER BACKUP/ MECHANICAL VENTILATED SHAFTS.



**OWNER**  
MSM INDIA INFRASTRUCTURES PVT. LTD.

**PROJECT**  
PROPOSED BUILDING PLAN OF GROUP HOUSING POCKET B AREA MEASURING 9.1521 ACRES, PART OF INDUSTRIAL PLOTTED COLONY OVER AN AREA MEASURING 139.79975 ACRES (LICENSE NO.168 OF 2005 DATED 08.09.2025) IN THE REVENUE ESTATE OF VILLAGE BAS HARIA AND JHIND SARAI ABAD, IN SECTOR M9, M10 AND M11 GURUGRAM MANESAR URBAN COMPLEX

**ARCHITECTS**  
**STUDIO SYMBIOSIS**  
INDIA | GERMANY | UK  
INDIA  
1301, TOWER-E, SKYMARK ONE  
SECTOR 08, NOIDA, U.P. 201301, NOIDA  
TEL: +91 0522 428879  
E-MAIL: INFO@STUDIOSYMBIOSIS.COM  
WWW.STUDIOSYMBIOSIS.COM

**OWNER'S SEAL & SIGNATURE**

**ARCHITECTS SEAL & SIGNATURE**  
AMIT GUPTA  
Architect  
31/12/2024 / 33147

**DATE:** **SCALE:** 1:100 **DWG NO:** FP-82-S-01  
**DWG TITLE:** TOWER B2 STILT FLOOR PLAN