

**Note** -  
 1. BUILDING WILL BE DESIGNED AS STRUCTURE'S AS PER RELEVANT IS CODES FOR EARTH QUAKE RESISTANCE

**PROJECT**  
 REVISED BUILDING PLANS OF COMMERCIAL 2ND OR 2007 DATED 25.10.2007 AND 6.8002 WAGES (LICENCE NO.289 OF 2007 DATED 25.10.2007 LICENCE NO.241 OF 2007 DATED 25.10.2007 & LICENCE NO.198 SECTION-62 GUJARAWAM MANESAR URBAN COMPLEX BEING DEVELOPED BY PIONEER URBAN LAND & INFRASTRUCTURE LTD.  
**CLIENT**  
 PIONEER URBAN LAND & INFRASTRUCTURE LTD.

**DESIGN ARCHITECT**  
 Pioneer Urban  
 Ground Floor  
 Near C.I.F. Course Extension Road,  
 Sector-62, -122001 Haryana

**RSP**  
 RSP Design consultants  
 (India) Pvt. Ltd  
 103, First Floor, Barchin Business Tower, Sector-48, Sohna Road  
 Gurugram, 122018, Haryana TEL: 470988 FAX: 470918  
 Gurgaon, 122018, Haryana TEL: 470988 FAX: 470918  
 TEL: 2558588 FAX: 2558588  
 EMAIL: rsp@spindia.net | www.rspindia.net

**RISIMS ARCHITECTS**  
 RISMS ARCHITECTS PVT. LTD.  
 69, Nara Nivas Bhawan, Kirti  
 (Behind D2), Vasant Kunj,  
 New Delhi-110070,  
 Tel.: 011-26898616, 26898617  
 www.risims-arch.com

**MEP CONSULTANT:**  
 SNIIL MAYAN CONSULTING ENGINEERS LLP  
 206-206A, 2ND FLOOR, THE CENTRE, DLF GOLF COURSE ROAD, SECTOR-54, GURGAON-122002, HARYANA (INDIA)  
 URL: WWW.SNIIL.CO.IN

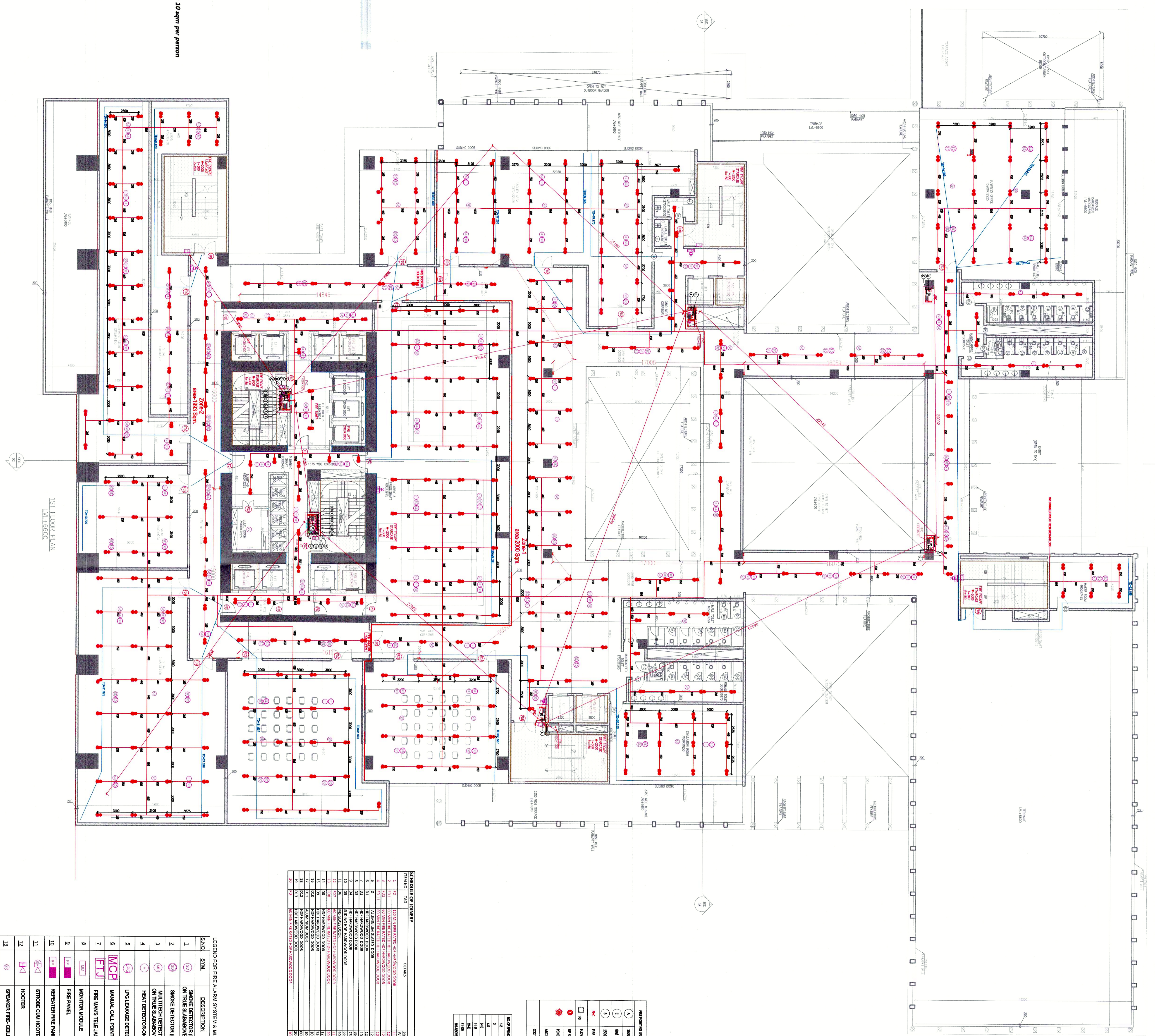
**FIRE SUBMISSION**

Signature of Fire Engineer  
 60/60, B.C. Park, Gurgaon-122002  
 Date: 14/02/24  
 Fire Fighting Engineer  
 SNIIL MAYAN CONSULTING ENGINEERS LLP  
 206-206A, 2ND FLOOR, THE CENTRE, DLF GOLF COURSE ROAD, SECTOR-54, GURGAON-122002, HARYANA (INDIA)  
 Date: 14/02/24

IT IS CERTIFIED THAT THESE DRAWINGS ARE AS PER APPROVED DWG BY CITY/CHURAN/URBAN BUILDING PLAN APPROVAL COMMITTEE/ VUDA MEMO NO. 25/2007 DATED 05/05/2007 DATED 13/06/2007 & SIGNATURE  
 ARCHITECT'S SEAL  
 OWNERS SEAL & SIGNATURE

Stamp of Pioneer Urban Land & Infrastructure Ltd.  
 Stamp of RSP Design Consultants

JUNE - 2024 Scale: 1:100  
 Drawing Title: 1ST FLOOR PLAN FIRE FITTING LAYOUT  
 Drawing No.: SNC-CL-F-02  
 23/12/2023



**Club 1st floor Updated Occupant Load Calculation**

Cafe	: 100 Sqm / 1.8 sqm per person = 55 Pax
Business Office	: 193 Sqm / 10 sqm per person = 19 Pax
Facility area	: 309 Sqm / 10 sqm per person = 31 Pax
Ballroom court	: 336 Sqm / 1.4 sqm per person = 240 Pax
Simulation room	: 81 Sqm / 1.4 sqm per person = 60 Pax
Mini Theatre	: 60 No. of seats x 1.2 = 72 Pax
Equipment store	: 147 Sqm / 10 sqm per person = 17 Pax
Store	: 477 Sqm / 30 sqm per person = 16 Pax
Circulation space	: 1516 Sqm / 6 sqm per person = 252 Pax
Gross occupant load	: 742 Pax
Staircase width required	: 742 Pax
Staircase width provided	: 800 mm (2000 x Area)

**Note: We have considered Facility Area as the Office Occupancy on 10 sqm per person which covers to Support Staff.**

**SCHEDULE OF FINERY**

Sl. No.	Item	Quantity	Unit	Location
1	SMOKE DETECTOR PHOTO ELECTRIC	100	NO.	ALL COMMON AREAS
2	SMOKE DETECTOR PHOTO ELECTRIC	100	NO.	ALL COMMON AREAS
3	SMOKE DETECTOR PHOTO ELECTRIC	100	NO.	ALL COMMON AREAS
4	SMOKE DETECTOR PHOTO ELECTRIC	100	NO.	ALL COMMON AREAS
5	SMOKE DETECTOR PHOTO ELECTRIC	100	NO.	ALL COMMON AREAS
6	SMOKE DETECTOR PHOTO ELECTRIC	100	NO.	ALL COMMON AREAS
7	SMOKE DETECTOR PHOTO ELECTRIC	100	NO.	ALL COMMON AREAS
8	SMOKE DETECTOR PHOTO ELECTRIC	100	NO.	ALL COMMON AREAS
9	SMOKE DETECTOR PHOTO ELECTRIC	100	NO.	ALL COMMON AREAS
10	SMOKE DETECTOR PHOTO ELECTRIC	100	NO.	ALL COMMON AREAS
11	SMOKE DETECTOR PHOTO ELECTRIC	100	NO.	ALL COMMON AREAS
12	SMOKE DETECTOR PHOTO ELECTRIC	100	NO.	ALL COMMON AREAS
13	SMOKE DETECTOR PHOTO ELECTRIC	100	NO.	ALL COMMON AREAS
14	SMOKE DETECTOR PHOTO ELECTRIC	100	NO.	ALL COMMON AREAS
15	SMOKE DETECTOR PHOTO ELECTRIC	100	NO.	ALL COMMON AREAS
16	SMOKE DETECTOR PHOTO ELECTRIC	100	NO.	ALL COMMON AREAS
17	SMOKE DETECTOR PHOTO ELECTRIC	100	NO.	ALL COMMON AREAS
18	SMOKE DETECTOR PHOTO ELECTRIC	100	NO.	ALL COMMON AREAS
19	SMOKE DETECTOR PHOTO ELECTRIC	100	NO.	ALL COMMON AREAS
20	SMOKE DETECTOR PHOTO ELECTRIC	100	NO.	ALL COMMON AREAS
21	SMOKE DETECTOR PHOTO ELECTRIC	100	NO.	ALL COMMON AREAS
22	SMOKE DETECTOR PHOTO ELECTRIC	100	NO.	ALL COMMON AREAS
23	SMOKE DETECTOR PHOTO ELECTRIC	100	NO.	ALL COMMON AREAS
24	SMOKE DETECTOR PHOTO ELECTRIC	100	NO.	ALL COMMON AREAS
25	SMOKE DETECTOR PHOTO ELECTRIC	100	NO.	ALL COMMON AREAS
26	SMOKE DETECTOR PHOTO ELECTRIC	100	NO.	ALL COMMON AREAS
27	SMOKE DETECTOR PHOTO ELECTRIC	100	NO.	ALL COMMON AREAS
28	SMOKE DETECTOR PHOTO ELECTRIC	100	NO.	ALL COMMON AREAS
29	SMOKE DETECTOR PHOTO ELECTRIC	100	NO.	ALL COMMON AREAS
30	SMOKE DETECTOR PHOTO ELECTRIC	100	NO.	ALL COMMON AREAS

**LEGEND FOR FIRE ALARM SYSTEM & MISC/FPA SYSTEM**

Sl. No.	SYM.	DESCRIPTION
1	☉	SMOKE DETECTOR PHOTO ELECTRIC
2	☉	SMOKE DETECTOR PHOTO ELECTRIC
3	☉	SMOKE DETECTOR PHOTO ELECTRIC
4	☉	SMOKE DETECTOR PHOTO ELECTRIC
5	☉	SMOKE DETECTOR PHOTO ELECTRIC
6	☉	SMOKE DETECTOR PHOTO ELECTRIC
7	☉	SMOKE DETECTOR PHOTO ELECTRIC
8	☉	SMOKE DETECTOR PHOTO ELECTRIC
9	☉	SMOKE DETECTOR PHOTO ELECTRIC
10	☉	SMOKE DETECTOR PHOTO ELECTRIC
11	☉	SMOKE DETECTOR PHOTO ELECTRIC
12	☉	SMOKE DETECTOR PHOTO ELECTRIC
13	☉	SMOKE DETECTOR PHOTO ELECTRIC