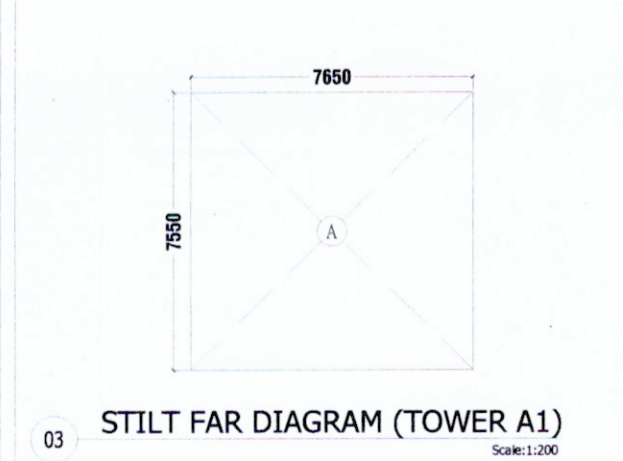




01 STILT FLOOR PLAN (TOWER A1)
SCALE: 1:200



03 STILT FAR DIAGRAM (TOWER A1)
SCALE: 1:200

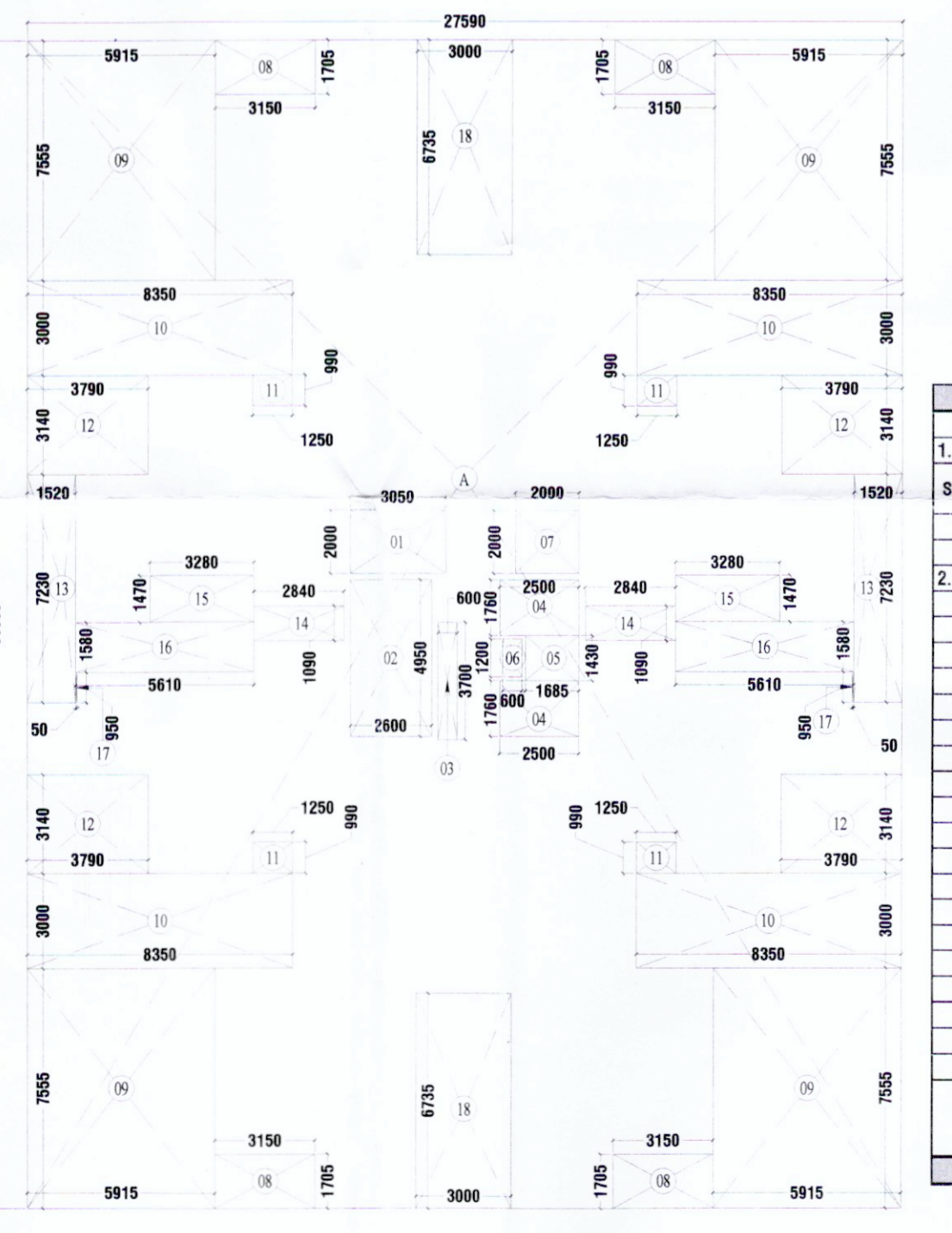
STILT FLOOR FAR CALCULATION OF TOWER (A1)							
1. ADDITION - XX							
S.No.	NAME	SHAPE	LENGTH (L)	WIDTH (B)	HEIGHT (H)	FORMULA	TOTAL AREA
1	A	Rectangle	7.650	7.650	-	L X B	57.758
TOTAL AREA							57.758
STILT FLOOR FAR OF TOWER A1							SOM.

TYPICAL FLOOR NON-F.A.R. CALCULATION OF TOWER (A1)							
1. ADDITION - XX							
S.No.	NAME	SHAPE	LENGTH (L)	WIDTH (B)	HEIGHT (H)	FORMULA	TOTAL AREA
1	2	Rectangle	2.600	4.950	-	L X B	12.870
2	4	Rectangle	2.500	1.760	-	L X B	8.800
3	5	Rectangle	1.685	1.430	-	L X B	2.410
TOTAL NON-F.A.R. ON TYPICAL FLOOR OF TOWER A1							24.080

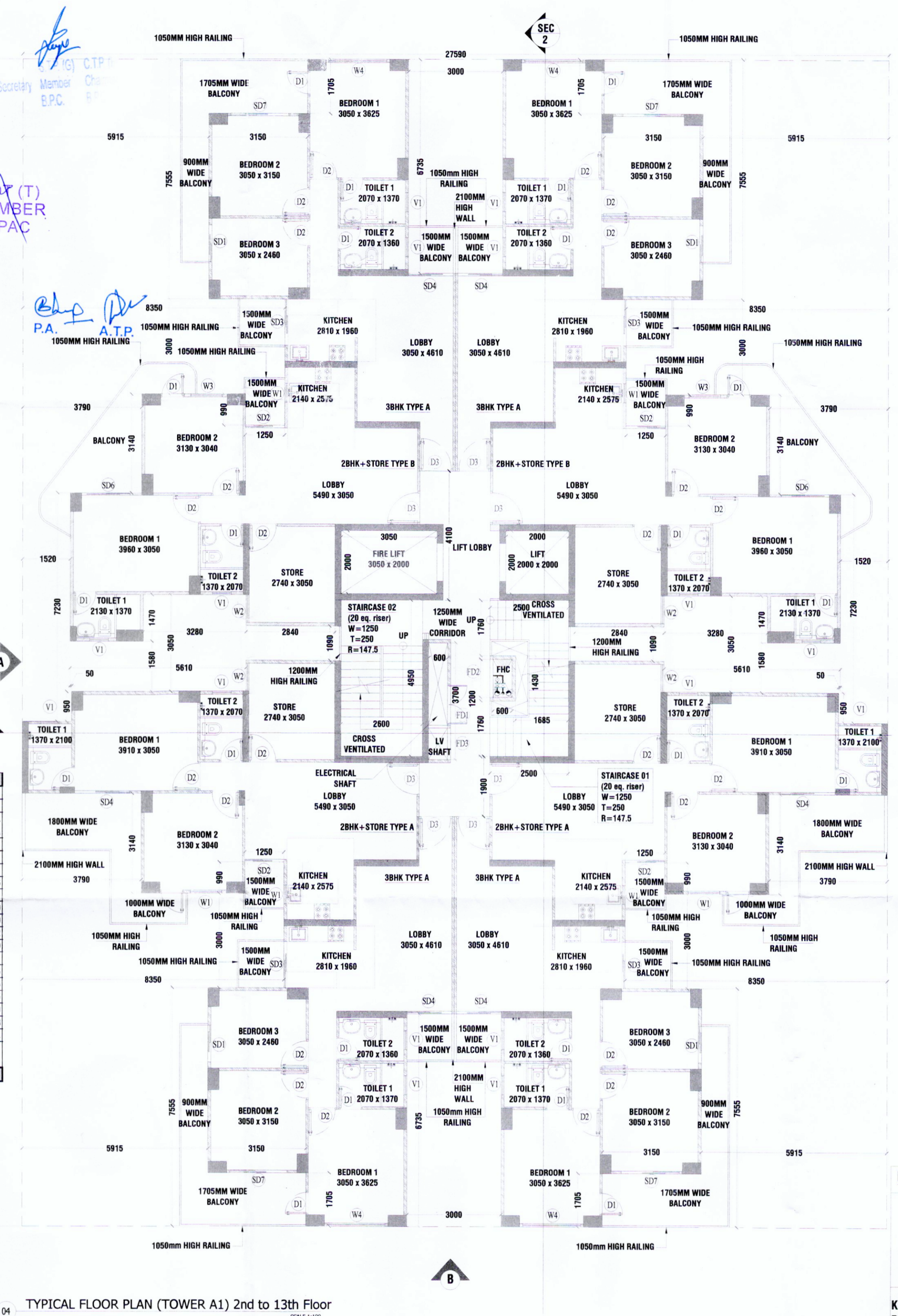


02 GROUND COVERAGE DIAGRAM (TOWER A1)
SCALE: 1:200

GROUND COVERAGE CALCULATION OF TOWER (A1)							
1. ADDITION - XX							
S.No.	NAME	SHAPE	LENGTH (L)	WIDTH (B)	HEIGHT (H)	FORMULA	TOTAL AREA
1	A	Rectangle	27.590	36.900	-	L X B	1018.071
1. TOTAL ADDITION							1018.071
2. DEDUCTION - YY							
1	8	Rectangle	3.150	1.705	-	L X B	5.371
2	9	Rectangle	5.915	7.555	-	L X B	44.688
3	10	Rectangle	8.350	3.000	-	L X B	25.050
4	11	Rectangle	1.250	0.990	-	L X B	1.238
5	12	Rectangle	3.790	3.140	-	L X B	11.901
6	13	Rectangle	1.520	7.230	-	L X B	10.990
7	14	Rectangle	2.840	1.090	-	L X B	3.096
8	15	Rectangle	3.280	1.470	-	L X B	4.822
9	16	Rectangle	5.610	1.580	-	L X B	8.864
10	17	Rectangle	0.050	0.950	-	L X B	0.048
11	18	Rectangle	3.000	6.735	-	L X B	20.205
2. TOTAL DEDUCTION							449.033
GROUND COVERAGE OF TOWER (A1)							SOM.
ADDITION (XX) - DEDUCTION (YY)							569.038
GROUND COVERAGE OF TOWER (A1)							SOM.



05 TYPICAL FLOOR FAR DIAGRAM (TOWER A1)
SCALE: 1:200



04 TYPICAL FLOOR PLAN (TOWER A1) 2nd to 13th Floor
SCALE: 1:100

TYPICAL FLOOR F.A.R. CALCULATION OF TOWER (A1)							
1. ADDITION - XX							
S.No.	NAME	SHAPE	LENGTH (L)	WIDTH (B)	HEIGHT (H)	FORMULA	TOTAL AREA
1	A	Rectangle	27.590	36.900	-	L X B	1018.071
1. TOTAL ADDITION							1018.071
2. DEDUCTION - YY							
1	1	Rectangle	3.050	2.000	-	L X B	6.100
2	2	Rectangle	2.600	4.950	-	L X B	12.870
3	3	Rectangle	0.600	3.700	-	L X B	2.220
4	4	Rectangle	2.500	1.760	-	L X B	4.400
5	5	Rectangle	1.685	1.430	-	L X B	2.410
6	6	Rectangle	0.600	1.200	-	L X B	0.720
7	7	Rectangle	2.000	2.000	-	L X B	4.000
8	8	Rectangle	3.150	1.705	-	L X B	5.371
9	9	Rectangle	5.915	7.555	-	L X B	44.688
10	10	Rectangle	8.350	3.000	-	L X B	25.050
11	11	Rectangle	1.250	0.990	-	L X B	1.238
12	12	Rectangle	3.790	3.140	-	L X B	11.901
13	13	Rectangle	1.520	7.230	-	L X B	10.990
14	14	Rectangle	2.840	1.090	-	L X B	3.096
15	15	Rectangle	3.280	1.470	-	L X B	4.822
16	16	Rectangle	5.610	1.580	-	L X B	8.864
17	17	Rectangle	0.050	0.950	-	L X B	0.048
18	18	Rectangle	3.000	6.735	-	L X B	20.205
2. TOTAL DEDUCTION							486.152
TOTAL F.A.R. ON TYPICAL FLOOR OF TOWER (A1)							SOM.
ADDITION (XX) - DEDUCTION (YY)							531.919
TOTAL F.A.R. ON TYPICAL FLOOR OF TOWER (A1)							SOM.

AREA SUMMARY - (TOWER A1)		
A	Ground Coverage	901.913 SQM.
B	Stilt Floor FAR	57.758 SQM.
C	Typical Floor FAR	531.919 SQM.
D	No. of Typical Floors (A1)	13 NO S.
E	Total FAR of Tower A1 (E = B + (C*D))	6972.599 SQM.
F	2BHK Type A (Balcony Area)	15.888 SQM.
G	No. of 2BHK Type A Units	4 NO S.
H	2BHK Type A1 (Balcony Area)	50.431 SQM.
I	No. of 2BHK Type A1 Units	4 NO S.
J	2BHK + Store Type A (Balcony Area)	12.538 SQM.
K	No. of 2BHK + Store Type A Units	2 NO S.
L	2BHK + Store Type A1 (Balcony Area)	35.175 SQM.
M	No. of 2BHK + Store Type A1 Units	2 NO S.
N	2BHK + Store Type B (Balcony Area)	11.284 SQM.
O	No. of 2BHK + Store Type B Units	2 NO S.
P	2BHK + Store Type B1 (Balcony Area)	34.551 SQM.
Q	No. of 2BHK + Store Type B1 Units	2 NO S.
R	Non-FAR (Balcony) in One Typical Floor (12 Fibers)	110.393 SQM.
S	Non-FAR (Balcony) in First Floor (S = (H*U) + (L*V) + (P*Q))	341.177 SQM.
T	Non-FAR (Balcony) in One Tower (T = (R*12) + S)	1665.888 SQM.
U	Non-FAR (Common Area) of One Typical Floor	24.380 SQM.
V	Non-FAR (Common Area) of One Tower (U*13)	313.034 SQM.
W	Stilt Floor Non-FAR (W = A * B)	843.255 SQM.
X	Total Non-FAR in Tower A1 (Stilt, First, Typical Floor Balcony & Core)	2822.178 SQM.
Y	Mummy Built-up Area	57.758 SQM.
Z	Overhead Tank Built-up Area	57.758 SQM.
Z1	Total Built-up Area in One Tower (Z1 = E + X + Y + Z)	9910.392 SQM.

DOOR WINDOW SCHEDULE - TOWER A1-A6					
S.No.	Type	Opening Size	Grid Level	Listed Level	Description
01	D1	750x250	00	2250	Toilet
02	D2	900x250	00	2250	Bedroom
03	D3	1000x250	00	2250	Kitchen
04	D4	1000x700x250	00	2250	Kitchen Lobby
05	DW1	1000x700x250	00	2250	1st Fire Rated Door
06	B01	1700x250	00	2250	Balcony (First Floor)
07	B02	1500x250	00	2250	Balcony
08	B03	1400x250	00	2250	Balcony
09	B04	1400x250	00	2250	Balcony
10	B05	1700x250	00	2250	Balcony
11	B06	1800x250	00	2250	Balcony
12	B07	1800x250	00	2250	Balcony
13	W1	800x1200	1000	2250	Kitchen
14	W2	800x1800	400	2250	Bedroom 02
15	W3	1000x1800	400	2250	Bedroom 03
16	W4	1800x1800	400	2250	Bedroom 03
17	V1	600x1800	1000	2250	Toilet
18	F01	1000x2100	100	2250	Electrical Shaft
19	F02	1200x1800	400	2250	F.H.C.
20	F03	1000x1800	400	2250	L.V. Shaft
21	F04	1000x250	00	2250	Shower
22	F05	1200x250	00	2250	Fire Control Room
23	F06	1000x250	00	2250	Mechanical Room
24	F07	900x250	00	2250	Staircase 01 (First Floor)

PRINCIPAL ARCHITECT:
DESIGN FORUM INTERNATIONAL
K-47, KAILASH COLONY, NEW DELHI-110048
PHONE NO.: 011-46556600

OWNER'S SIGNATURE: *Mahira Homes Private Limited*
ARCHITECT'S SIGNATURE: *ANUJ TEVA B. Arch. (Hons.) CA95/18739*
Authorised Signatory

CLIENT:
M/S BLOSSOM PVT. LTD.
PROJECT:
PROPOSED BUILDING PLANS OF AFFORDABLE GROUP HOUSING COLONY ADMEASURING 6.675 ACRES (LICENSE NO.09 OF 2022 DATED 31-01-2022) BEING DEVELOPED IN VILLAGE HARSARU, SECTOR 88-B, GURUGRAM BY M/S BLOSSOM PROPERTIES PVT. LTD. AND OTHER LAND OWNERS IN COLLABORATION WITH M/S MAHIRA HOMES PVT. LTD.

DRAWING TITLE:
Tower - A1: Floor Plans, Area Diagrams & Area Chart
SHEET NO.
05
SCALE: 1:100
DATE: 24.02.2022