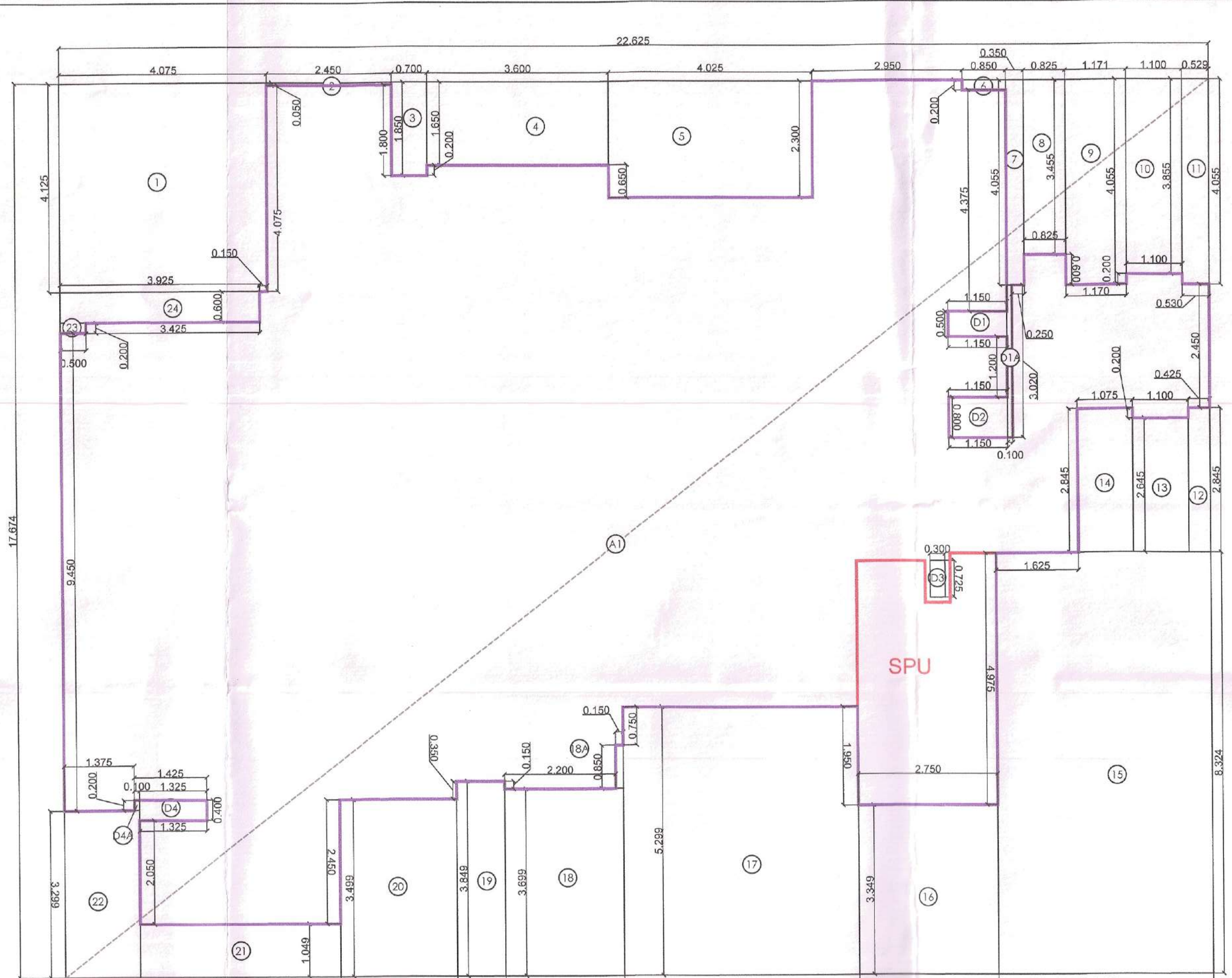
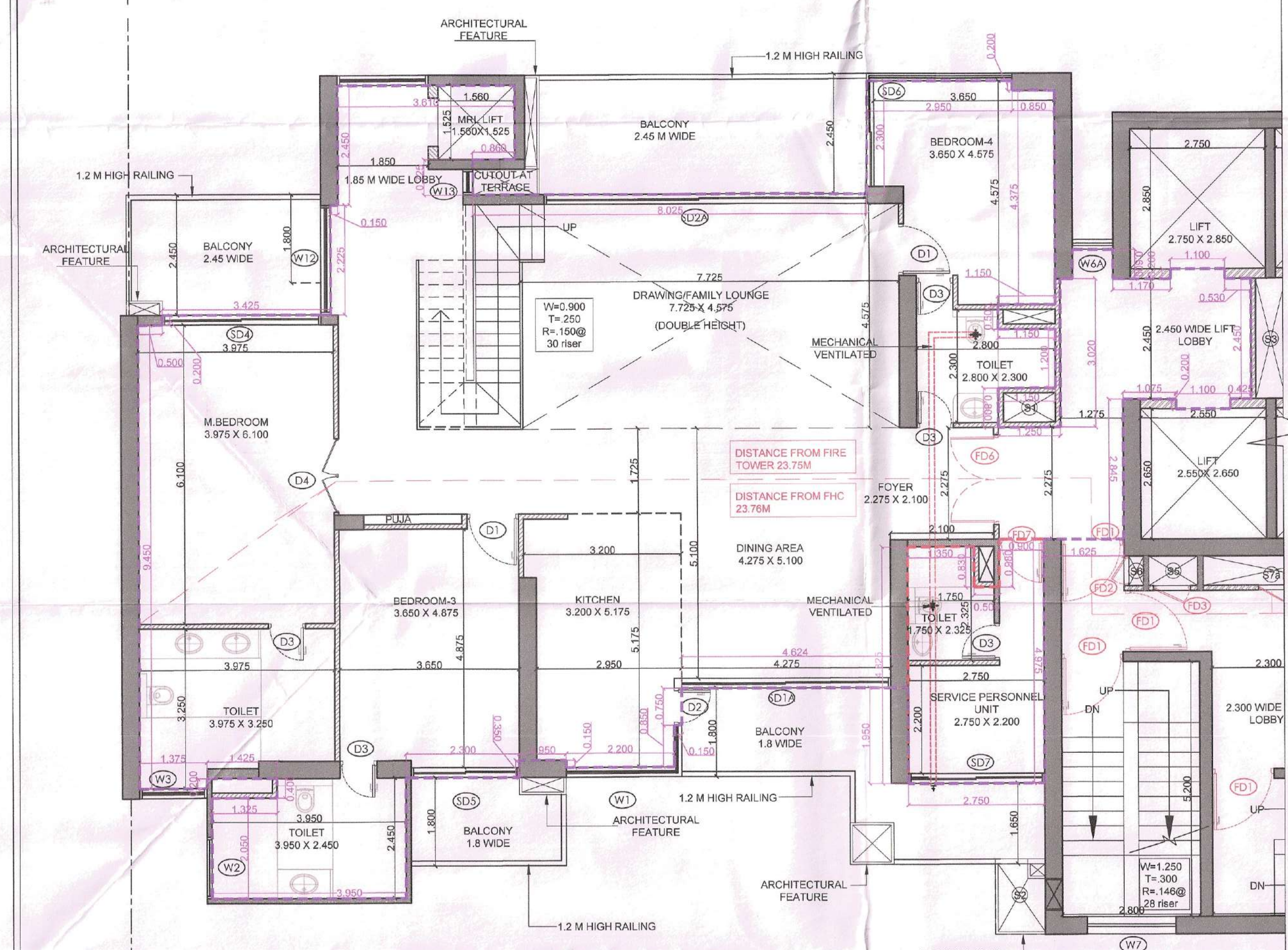


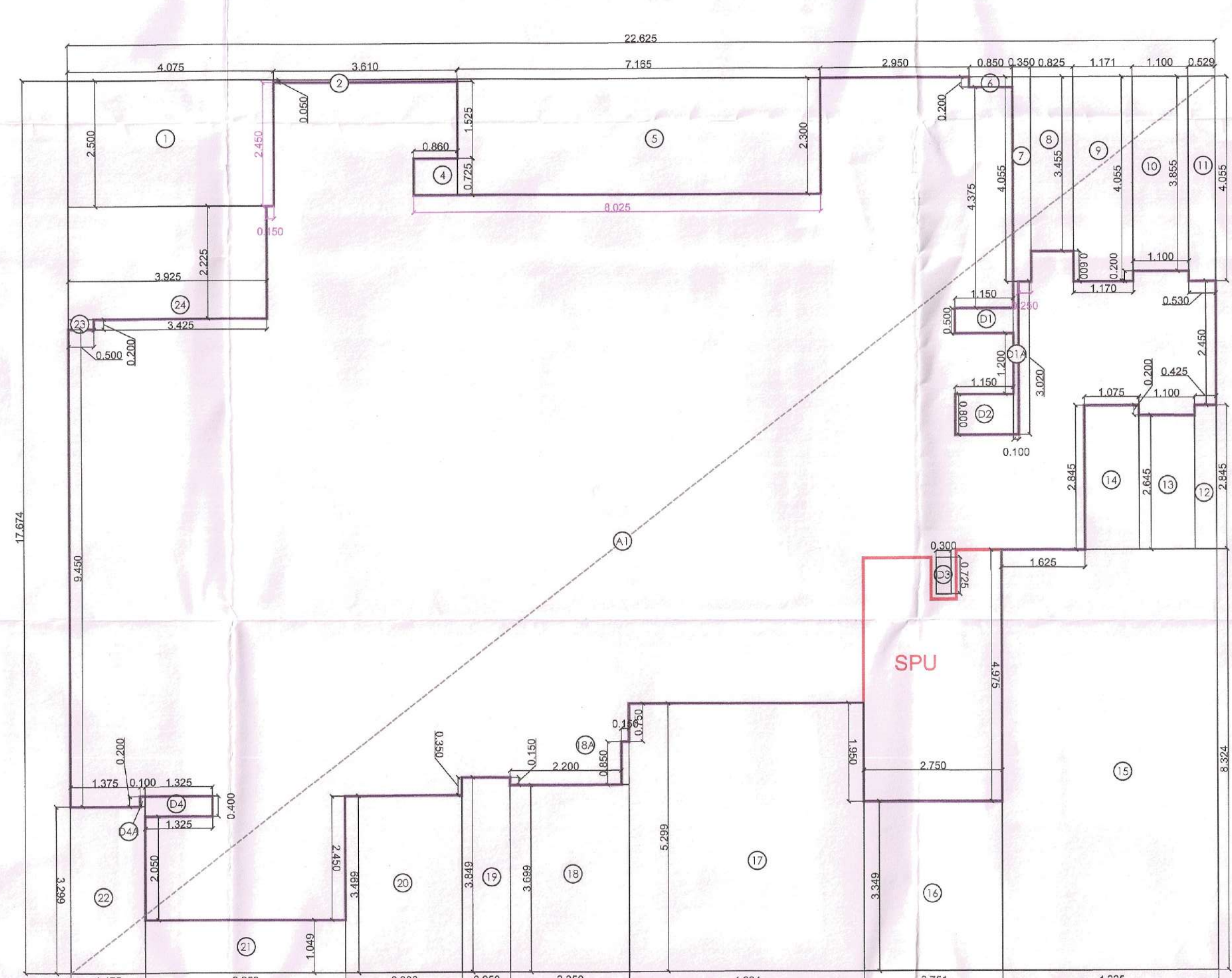
TYPICAL 4 BHK + SERVICE PERSONNEL UNIT



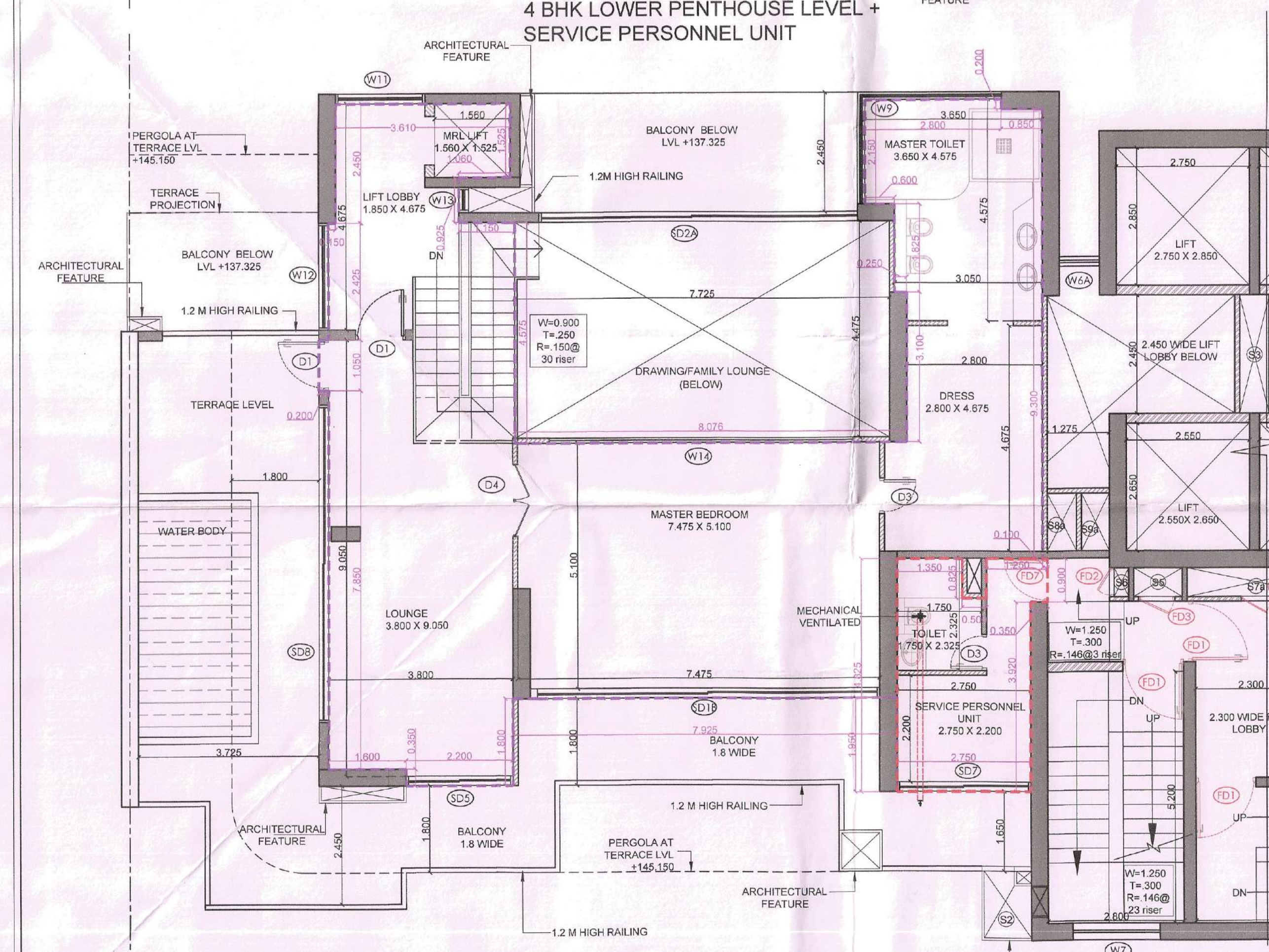
4BHK UNIT 1 & 2 CARPET AREA DIAGRAM



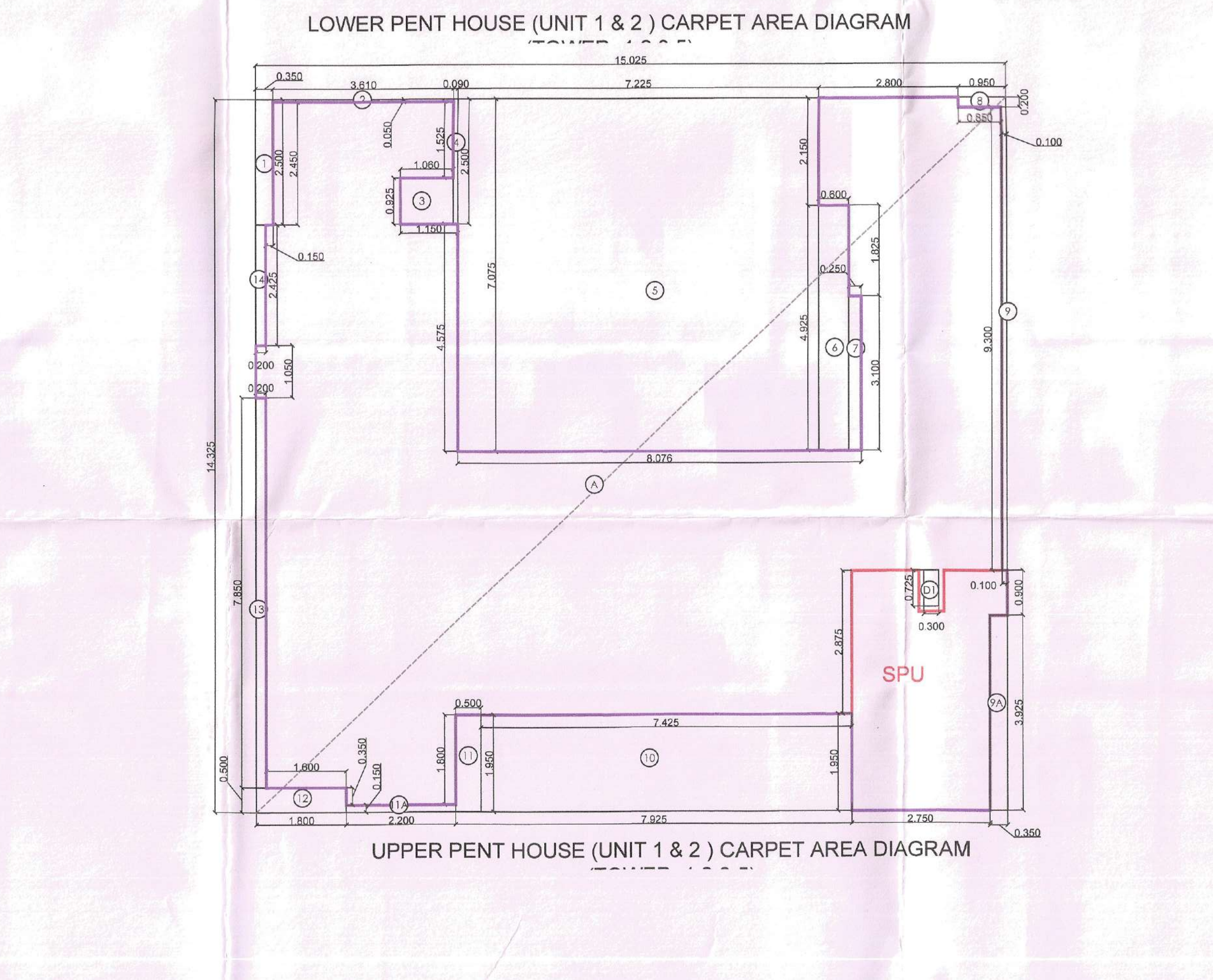
4 BHK LOWER PENTHOUSE LEVEL + SERVICE PERSONNEL UNIT



LOWER PENT HOUSE (UNIT 1 & 2) CARPET AREA DIAGRAM



4 BHK UPPER PENTHOUSE LEVEL + SERVICE PERSONNEL UNIT

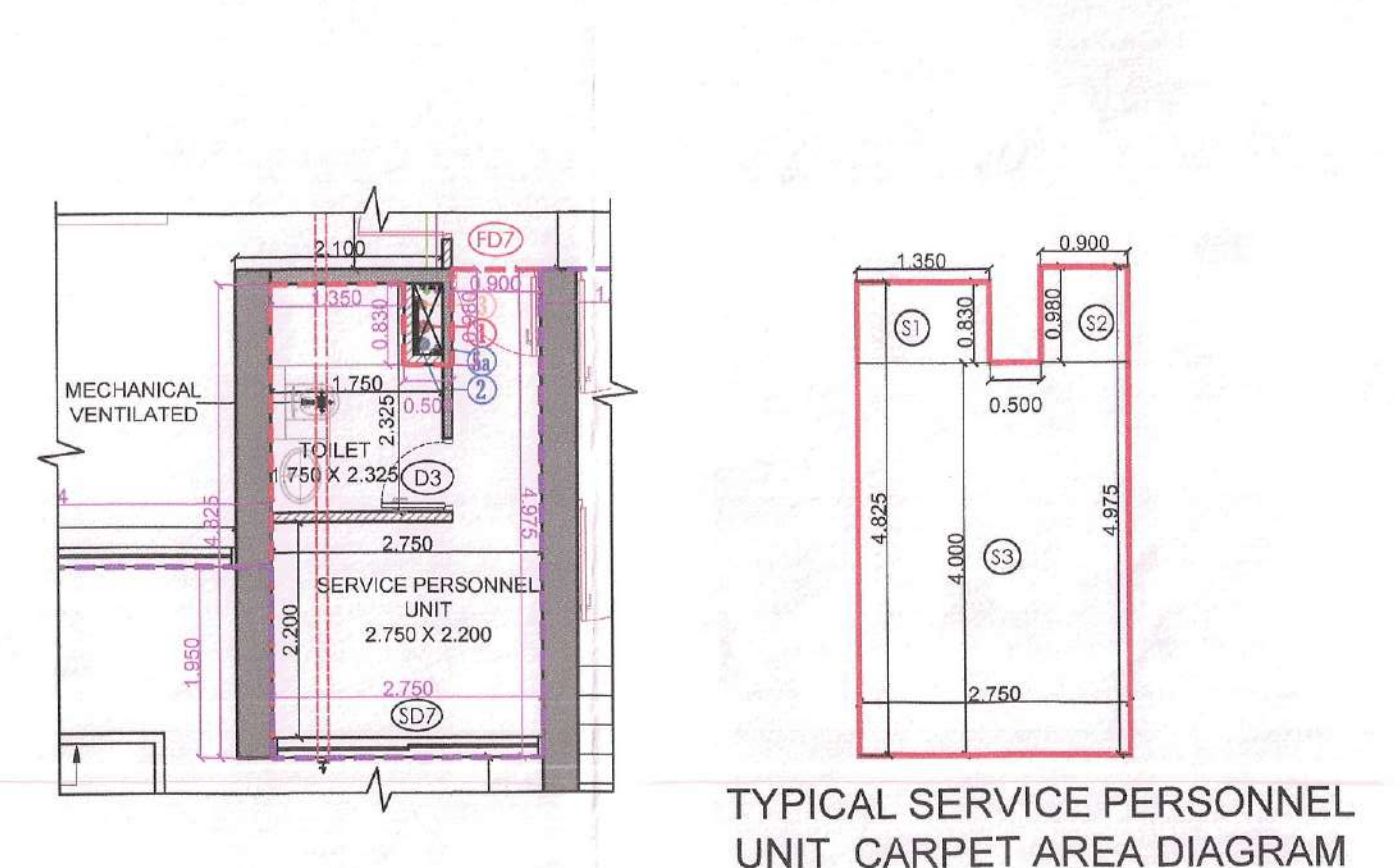


UPPER PENT HOUSE (UNIT 1 & 2) CARPET AREA DIAGRAM

**TOWER - 3, 3 B**  
4BHK UNIT CARPET AREA  
(All Dimensions are in Meter & Area in Sqm)

ITEM	NO. S	WIDTH (MTR)	LENGTH (MTR)	AREA SQ. MTR + NO. X LENGTH X WIDTH	
A1	1	22.625	17.624	398.874	
DEDUCTION (B)					
1	1	4.075	4.125	16.806	
2	1	2.802	0.556	1.556	
3	1	0.700	1.850	1.295	
4	1	3.900	0.600	2.340	
5	1	4.025	2.300	9.258	
6	1	0.300	4.955	1.486	
7	1	0.300	4.955	1.486	
8	1	0.625	3.855	2.400	
9	1	1.175	4.955	5.821	
10	1	1.300	3.855	4.991	
11	1	0.300	4.955	1.486	
12	1	0.625	2.845	1.778	
13	1	0.300	2.845	0.853	
14	1	1.075	2.845	3.058	
15	1	2.251	3.848	8.581	
16	1	2.250	3.848	8.580	
17	1	4.525	2.250	10.181	
18	1	2.250	3.848	8.580	
19A	1	0.300	0.550	0.165	
19B	1	0.300	0.550	0.165	
20	1	2.290	3.848	8.698	
21	1	3.290	3.848	12.654	
22	1	1.475	3.290	4.852	
23	1	0.625	0.300	0.188	
24	1	3.925	0.600	2.355	
25	1	1.300	0.300	0.390	
26A	1	0.300	0.300	0.090	
26B	1	0.300	0.300	0.090	
27	1	1.100	0.600	0.660	
28	1	0.300	1.175	0.352	
29	1	0.300	0.600	0.180	
30	1	1.335	0.600	0.801	
31	1	0.300	0.300	0.090	
TOTAL					198.819

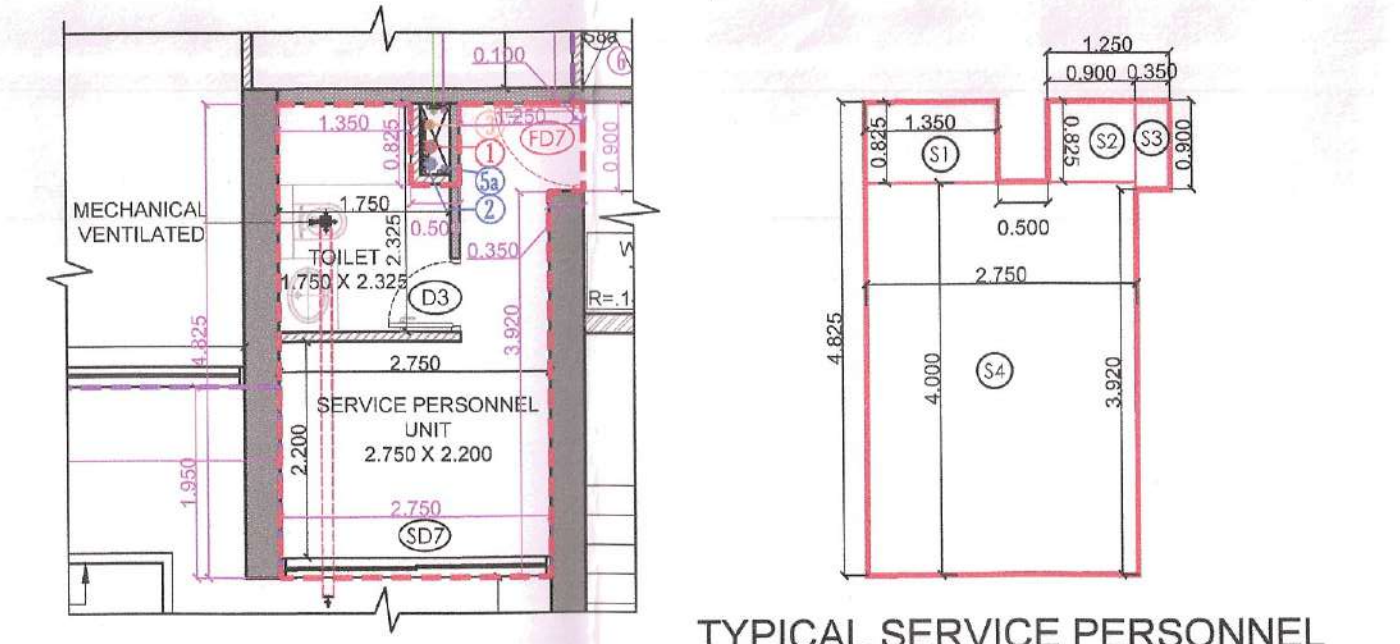
TOTAL TYPICAL UNIT CARPET AREA = ADDITIONAL - DEDUCTION (B)  
398.874 - 159.915 = 238.959 SQ. MT



TYPICAL SERVICE PERSONNEL UNIT CARPET AREA DIAGRAM

SERVICE PERSONNEL UNIT CARPET AREA  
(All Dimensions are in Meter & Area in Sqm)

ITEM	NO. S	WIDTH (MTR)	LENGTH (MTR)	AREA SQ. MTR + NO. X LENGTH X WIDTH	
1	1	2.750	2.200	6.050	
TOTAL					6.050



TYPICAL SERVICE PERSONNEL UNIT CARPET AREA DIAGRAM UPPER PENTHOUSE LVL

SERVICE PERSONNEL UNIT CARPET AREA UPPER PENT HOUSE

ITEM	NO. S	WIDTH (MTR)	LENGTH (MTR)	AREA SQ. MTR + NO. X LENGTH X WIDTH	
1	1	2.750	2.200	6.050	
TOTAL					6.050

**LOWER PENT HOUSE UNIT CARPET AREA**  
(All Dimensions are in Meter & Area in Sqm)

ITEM	NO. S	WIDTH (MTR)	LENGTH (MTR)	AREA SQ. MTR + NO. X LENGTH X WIDTH	
A1	1	22.625	17.624	398.874	
DEDUCTION (B)					
1	1	4.075	3.200	13.040	
2	1	3.925	0.550	2.156	
3	1	0.600	1.725	1.035	
4	1	0.600	1.725	1.035	
5	1	0.550	2.200	1.210	
6	1	0.300	4.955	1.486	
7	1	0.300	4.955	1.486	
8	1	0.625	3.845	2.400	
9	1	1.175	4.955	5.821	
10	1	1.300	3.845	4.991	
11	1	0.300	4.955	1.486	
12	1	0.625	2.845	1.778	
13	1	0.300	2.845	0.853	
14	1	1.075	2.845	3.058	
15	1	2.250	3.845	8.580	
16	1	2.250	3.845	8.580	
17	1	4.525	2.250	10.181	
18	1	2.250	3.845	8.580	
19A	1	0.300	0.550	0.165	
19B	1	0.300	0.550	0.165	
20	1	1.300	3.845	4.991	
21	1	3.290	3.845	12.654	
22	1	1.475	3.290	4.852	
23	1	0.625	0.300	0.188	
24	1	3.925	0.600	2.355	
25	1	1.300	0.300	0.390	
26A	1	0.300	0.300	0.090	
26B	1	0.300	0.300	0.090	
27	1	1.100	0.600	0.660	
28	1	0.300	1.175	0.352	
29	1	0.300	0.600	0.180	
30	1	1.335	0.600	0.801	
31	1	0.300	0.300	0.090	
TOTAL					198.819

TOTAL CARPET AREA = ADDITIONAL - DEDUCTION (B)  
398.874 - 159.915 = 238.959 SQ. MT

**UPPER PENT HOUSE UNIT CARPET AREA**  
(All Dimensions are in Meter & Area in Sqm)

ITEM	NO. S	WIDTH (MTR)	LENGTH (MTR)	AREA SQ. MTR + NO. X LENGTH X WIDTH	
A	1	15.025	14.325	215.213	
TOTAL					215.213

**SERVICE PERSONNEL UNIT CARPET AREA UPPER PENT HOUSE**  
(All Dimensions are in Meter & Area in Sqm)

ITEM	NO. S	WIDTH (MTR)	LENGTH (MTR)	AREA SQ. MTR + NO. X LENGTH X WIDTH	
1	1	2.750	2.200	6.050	
2	1	1.900	0.825	1.568	
3	1	0.500	0.825	0.413	
4	1	0.500	0.825	0.413	
5	1	2.225	2.275	5.059	
6	1	0.600	4.925	2.970	
7	1	0.250	3.100	0.775	
8	1	0.500	3.200	1.600	
9	1	0.100	3.900	0.390	
10	1	2.200	3.200	7.040	
11	1	7.425	1.950	14.475	
12	1	0.500	1.950	0.975	
13	1	0.125	2.200	0.275	
14	1	1.800	0.500	0.900	
15	1	0.200	3.925	0.785	
16	1	0.200	2.425	0.485	
17	1	0.500	0.725	0.362	
TOTAL					78.888

TOTAL CARPET AREA = ADDITIONAL - DEDUCTION (B)  
215.213 - 78.888 = 136.325 SQ. MT

**SERVICE PERSONNEL UNIT CARPET AREA UPPER PENT HOUSE**  
(All Dimensions are in Meter & Area in Sqm)

ITEM	NO. S	WIDTH (MTR)	LENGTH (MTR)	AREA SQ. MTR + NO. X LENGTH X WIDTH	
1	1	2.750	2.200	6.050	
2	1	1.900	0.825	1.568	
3	1	0.500	0.825	0.413	
4	1	0.500	0.825	0.413	
5	1	2.225	2.275	5.059	
6	1	0.600	4.925	2.970	
7	1	0.250	3.100	0.775	
8	1	0.500	3.200	1.600	
9	1	0.100	3.900	0.390	
10	1	2.200	3.200	7.040	
11	1	7.425	1.950	14.475	
12	1	0.500	1.950	0.975	
13	1	0.125	2.200	0.275	
14	1	1.800	0.500	0.900	
15	1	0.200	3.925	0.785	
16	1	0.200	2.425	0.485	
17	1	0.500	0.725	0.362	
TOTAL					136.325

W. S.P. (HQ) Member Secretary B.P.A.C.  
S.P. (G) Member B.P.A.C.  
C.P. (HQ) Chairman B.P.A.C.  
A.P. (HQ) Member B.P.A.C.  
J.D. V.P. A.P. J.D. (HQ)

TO BE READ WITH THIS OFFICE MEMO NO. DATED: \_\_\_\_\_

J.D. (HQ) Member B.P.A.C.

- Note:-
- BUILDING HAS AUTOMATIC SPRINKLER SYSTEM WHEREVER REQUIRED BY NBC.
  - BUILDING WILL BE DESIGNED (STRUCTURES) AS PER RELEVANT IS CODES FOR EARTH QUAKE RESISTANCE.
  - MECHANICAL VENTILATION WITH 100% POWER BACK-UP FOR SERVICE AREAS.

PROJECT:  
PROPOSED GROUP HOUSING COLONY MEASURING 5.875 ACRES UNDER TOD POLICY DATED 09.02.2016/LICENSE NO. 50 OF 2019 DATED 07.03.2019 IN SECTOR -49, GURUGRAM BEING DEVELOPED BY ELAN ENCLAVE PRIVATE LIMITED UNDER COLLABORATION WITH V.A. AGRICULTURE PVT LTD

ARCHITECT'S SEAL & SIGNATURE	OWNER'S SEAL & SIGNATURE
GIAN P. MATHUR ARCHITECT B. Arch., M.C.A. I.T.I.A CA No. 49/5769	For ELAN ENCLAVE PRIVATE LIMITED Authorized Signatory
JULY-2025.	Scale: 1:75
Drawing Title:- TOWER - 3 UNIT CARPET AREA DETAIL	Drawing No:- A-T3-09