

LEGEND:-
APPLIED FOR REVISED SUBMISSION
OC OBTAINED VIDE DTCP MEMO NO. 12813 DATED 28.05.2019

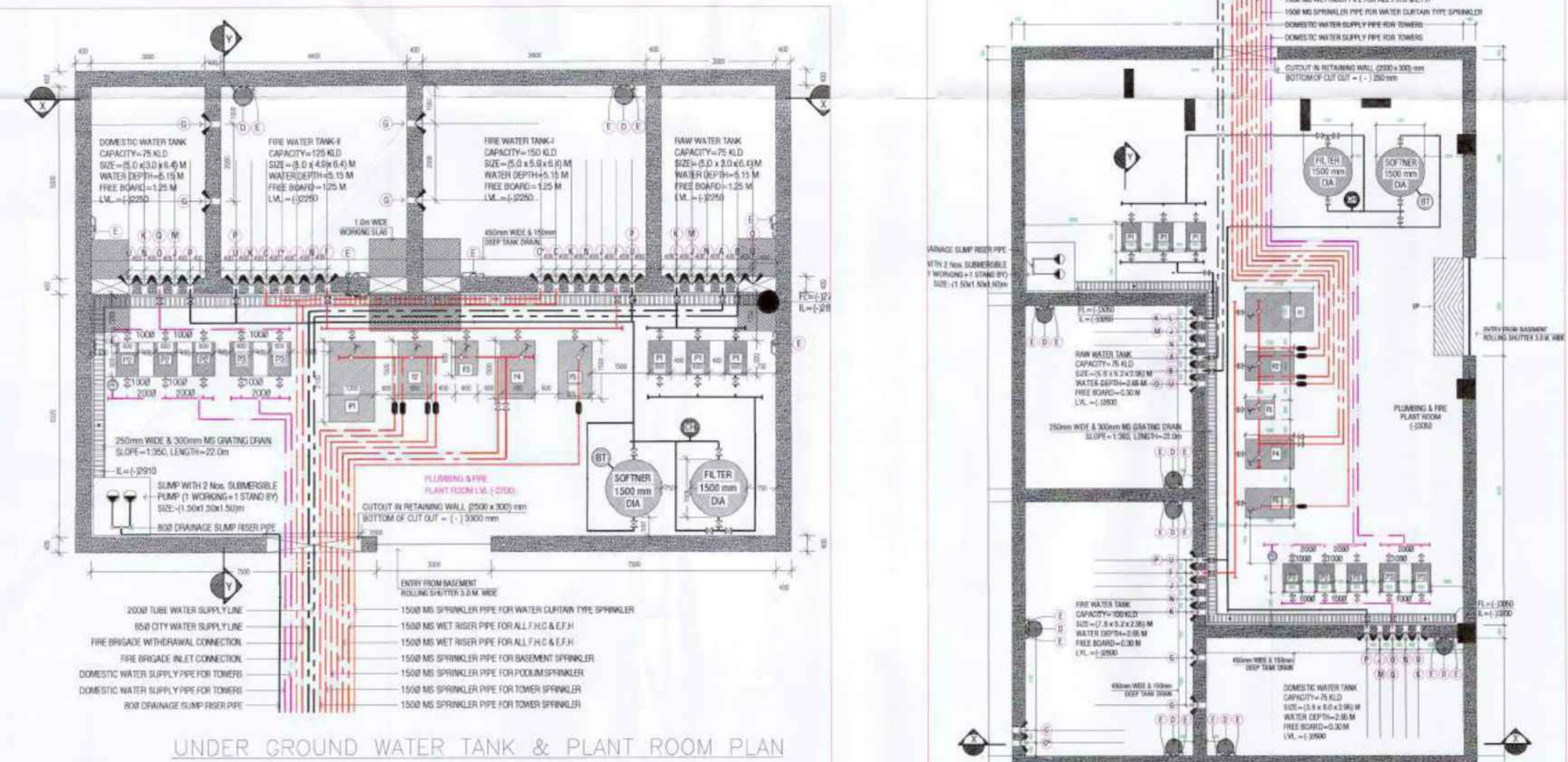
BACK TO BACK PARKING ONLY FOR SINGLE UNIT OWNER, IT'S NOT COUNTING IN NOS OF BAYS

PLANNING LEGEND:

- 1. 6M MTR WIDE ROAD
- 2. 12M MTR WIDE ROAD
- 3. 18M MTR WIDE ROAD
- 4. 24M MTR WIDE ROAD
- 5. 30M MTR WIDE ROAD
- 6. 36M MTR WIDE ROAD
- 7. 42M MTR WIDE ROAD
- 8. 48M MTR WIDE ROAD
- 9. 54M MTR WIDE ROAD
- 10. 60M MTR WIDE ROAD
- 11. 66M MTR WIDE ROAD
- 12. 72M MTR WIDE ROAD
- 13. 78M MTR WIDE ROAD
- 14. 84M MTR WIDE ROAD
- 15. 90M MTR WIDE ROAD
- 16. 96M MTR WIDE ROAD
- 17. 102M MTR WIDE ROAD
- 18. 108M MTR WIDE ROAD
- 19. 114M MTR WIDE ROAD
- 20. 120M MTR WIDE ROAD
- 21. 126M MTR WIDE ROAD
- 22. 132M MTR WIDE ROAD
- 23. 138M MTR WIDE ROAD
- 24. 144M MTR WIDE ROAD
- 25. 150M MTR WIDE ROAD
- 26. 156M MTR WIDE ROAD
- 27. 162M MTR WIDE ROAD
- 28. 168M MTR WIDE ROAD
- 29. 174M MTR WIDE ROAD
- 30. 180M MTR WIDE ROAD
- 31. 186M MTR WIDE ROAD
- 32. 192M MTR WIDE ROAD
- 33. 198M MTR WIDE ROAD
- 34. 204M MTR WIDE ROAD
- 35. 210M MTR WIDE ROAD
- 36. 216M MTR WIDE ROAD
- 37. 222M MTR WIDE ROAD
- 38. 228M MTR WIDE ROAD
- 39. 234M MTR WIDE ROAD
- 40. 240M MTR WIDE ROAD
- 41. 246M MTR WIDE ROAD
- 42. 252M MTR WIDE ROAD
- 43. 258M MTR WIDE ROAD
- 44. 264M MTR WIDE ROAD
- 45. 270M MTR WIDE ROAD
- 46. 276M MTR WIDE ROAD
- 47. 282M MTR WIDE ROAD
- 48. 288M MTR WIDE ROAD
- 49. 294M MTR WIDE ROAD
- 50. 300M MTR WIDE ROAD
- 51. 306M MTR WIDE ROAD
- 52. 312M MTR WIDE ROAD
- 53. 318M MTR WIDE ROAD
- 54. 324M MTR WIDE ROAD
- 55. 330M MTR WIDE ROAD
- 56. 336M MTR WIDE ROAD
- 57. 342M MTR WIDE ROAD
- 58. 348M MTR WIDE ROAD
- 59. 354M MTR WIDE ROAD
- 60. 360M MTR WIDE ROAD

PROJECT - LOTS SUMMARY TABLE

Lot No.	Area (sq.m)	Area (sq.ft)	Volume (cu.m)	Volume (cu.ft)	Height (m)	Height (ft)
1	1000	10763	10000	10763	10	32.8
2	1000	10763	10000	10763	10	32.8
3	1000	10763	10000	10763	10	32.8
4	1000	10763	10000	10763	10	32.8
5	1000	10763	10000	10763	10	32.8
6	1000	10763	10000	10763	10	32.8
7	1000	10763	10000	10763	10	32.8
8	1000	10763	10000	10763	10	32.8
9	1000	10763	10000	10763	10	32.8
10	1000	10763	10000	10763	10	32.8
11	1000	10763	10000	10763	10	32.8
12	1000	10763	10000	10763	10	32.8
13	1000	10763	10000	10763	10	32.8
14	1000	10763	10000	10763	10	32.8
15	1000	10763	10000	10763	10	32.8
16	1000	10763	10000	10763	10	32.8
17	1000	10763	10000	10763	10	32.8
18	1000	10763	10000	10763	10	32.8
19	1000	10763	10000	10763	10	32.8
20	1000	10763	10000	10763	10	32.8
21	1000	10763	10000	10763	10	32.8
22	1000	10763	10000	10763	10	32.8
23	1000	10763	10000	10763	10	32.8
24	1000	10763	10000	10763	10	32.8
25	1000	10763	10000	10763	10	32.8
26	1000	10763	10000	10763	10	32.8
27	1000	10763	10000	10763	10	32.8
28	1000	10763	10000	10763	10	32.8
29	1000	10763	10000	10763	10	32.8
30	1000	10763	10000	10763	10	32.8
31	1000	10763	10000	10763	10	32.8
32	1000	10763	10000	10763	10	32.8
33	1000	10763	10000	10763	10	32.8
34	1000	10763	10000	10763	10	32.8
35	1000	10763	10000	10763	10	32.8
36	1000	10763	10000	10763	10	32.8
37	1000	10763	10000	10763	10	32.8
38	1000	10763	10000	10763	10	32.8
39	1000	10763	10000	10763	10	32.8
40	1000	10763	10000	10763	10	32.8
41	1000	10763	10000	10763	10	32.8
42	1000	10763	10000	10763	10	32.8
43	1000	10763	10000	10763	10	32.8
44	1000	10763	10000	10763	10	32.8
45	1000	10763	10000	10763	10	32.8
46	1000	10763	10000	10763	10	32.8
47	1000	10763	10000	10763	10	32.8
48	1000	10763	10000	10763	10	32.8
49	1000	10763	10000	10763	10	32.8
50	1000	10763	10000	10763	10	32.8
51	1000	10763	10000	10763	10	32.8
52	1000	10763	10000	10763	10	32.8
53	1000	10763	10000	10763	10	32.8
54	1000	10763	10000	10763	10	32.8
55	1000	10763	10000	10763	10	32.8
56	1000	10763	10000	10763	10	32.8
57	1000	10763	10000	10763	10	32.8
58	1000	10763	10000	10763	10	32.8
59	1000	10763	10000	10763	10	32.8
60	1000	10763	10000	10763	10	32.8



PROJECT:
REVISED BUILDING PLAN FOR 19 VILLAS OF GROUP HOUSING AN AREA MEASURING 14.093 ACRES (LICENCE NO. 10 OF 2012 DATED 03-02-2012 AND LICENCE NO. 63 OF 2011 DATED 16-07-2011 IN SECTOR-104, GURGAON MANESAR URBAN COMPLEX BEING DEVELOPED BY GREAT VALUE HPL INFRA TECH PVT. LTD. AND OTHERS

DRAWING TITLE:
MASTER SITE LAYOUT PLAN FOR STORM

DEALT BY: SCALE 1:100
CHECKED BY: DATE-15-05-2025

THROUGH: AUTHORIZED SIGNATORY

Owner's and Architect's signature lines.

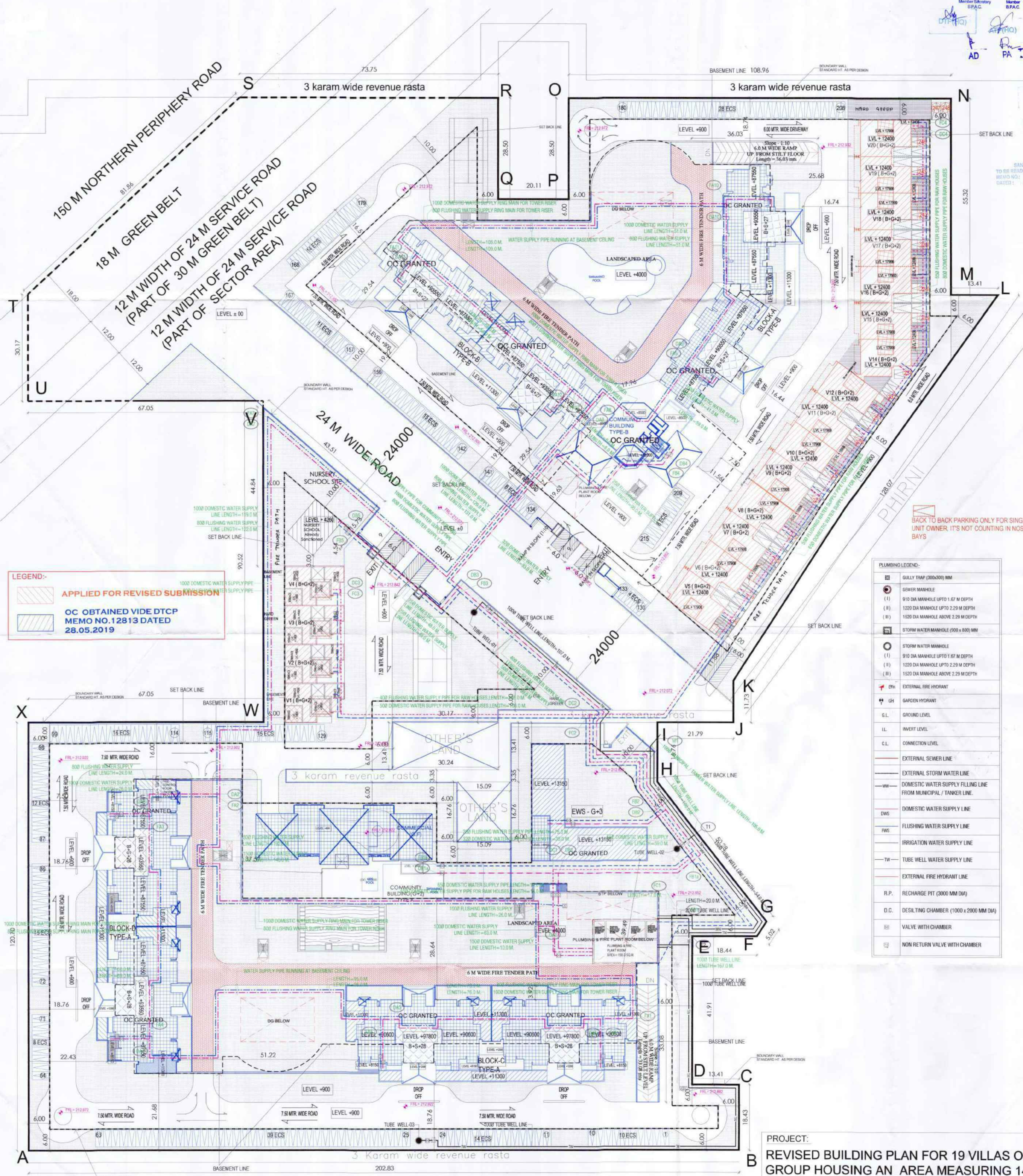
OWNER'S SIGN **ARCHITECT'S SIGN.**

This is a PROVISIONAL BUILDING PLAN approved only for the purpose of clearing Objections from the general public.

Member Secretary: AD, PA, ATP

Member: JDT (H), Rajesh Dutt SD(HQ)

Sanctioned to be read with these drawings: No. 48150 DATED: 19-12-2015



LEGEND:-

APPLIED FOR REVISED SUBMISSION

OC OBTAINED VIDE DTCP MEMO NO. 12813 DATED 28.05.2019

PLUMBING LEGEND:-

	GULLY TRAP (300x300) MM
	SEWER MANHOLE
	910 DIA MANHOLE UPTO 1.67 M DEPTH
	1200 DIA MANHOLE UPTO 2.29 M DEPTH
	1500 DIA MANHOLE ABOVE 2.29 M DEPTH
	STORM WATER MANHOLE (500 x 850) MM
	STORM WATER MANHOLE
	910 DIA MANHOLE UPTO 1.67 M DEPTH
	1200 DIA MANHOLE UPTO 2.29 M DEPTH
	1500 DIA MANHOLE ABOVE 2.29 M DEPTH
	EXTERNAL FIRE HYDRANT
	GARDEN HYDRANT
	G.L. GROUND LEVEL
	I.L. INVERT LEVEL
	C.L. CONNECTION LEVEL
	EXTERNAL SEWER LINE
	EXTERNAL STORM WATER LINE
	DOMESTIC WATER SUPPLY FILLING LINE FROM MUNICIPAL / TANKER LINE
	DOMESTIC WATER SUPPLY LINE
	FLUSHING WATER SUPPLY LINE
	IRRIGATION WATER SUPPLY LINE
	TUBE WELL WATER SUPPLY LINE
	EXTERNAL FIRE HYDRANT LINE
	R.P. RECHARGE PIT (3000 MM DIA)
	D.C. DESILTING CHAMBER (1000 x 2000 MM DIA)
	V. VALVE WITH CHAMBER
	N.R.V. NON RETURN VALVE WITH CHAMBER

PROJECT:

REVISED BUILDING PLAN FOR 19 VILLAS OF GROUP HOUSING AN AREA MEASURING 14.093 ACRES (LICENCE NO. 10 OF 2012 DATED 03-02-2012 AND LICENCE NO. 63 OF 2011 DATED 16-07-2011 IN SECTOR-104, GURGAON MANESAR URBAN COMPLEX BEING DEVELOPED BY GREAT VALUE HPL INFRATECH PVT. LTD. AND OTHERS

DRAWING TITLE:

MASTER SITE LAYOUT PLAN FOR WATER SUPPLY

DEALT BY: SCALE: 1:100

CHECKED BY: DATE: 15-05-2025

THROUGH: AUTHORISED SIGNATORY

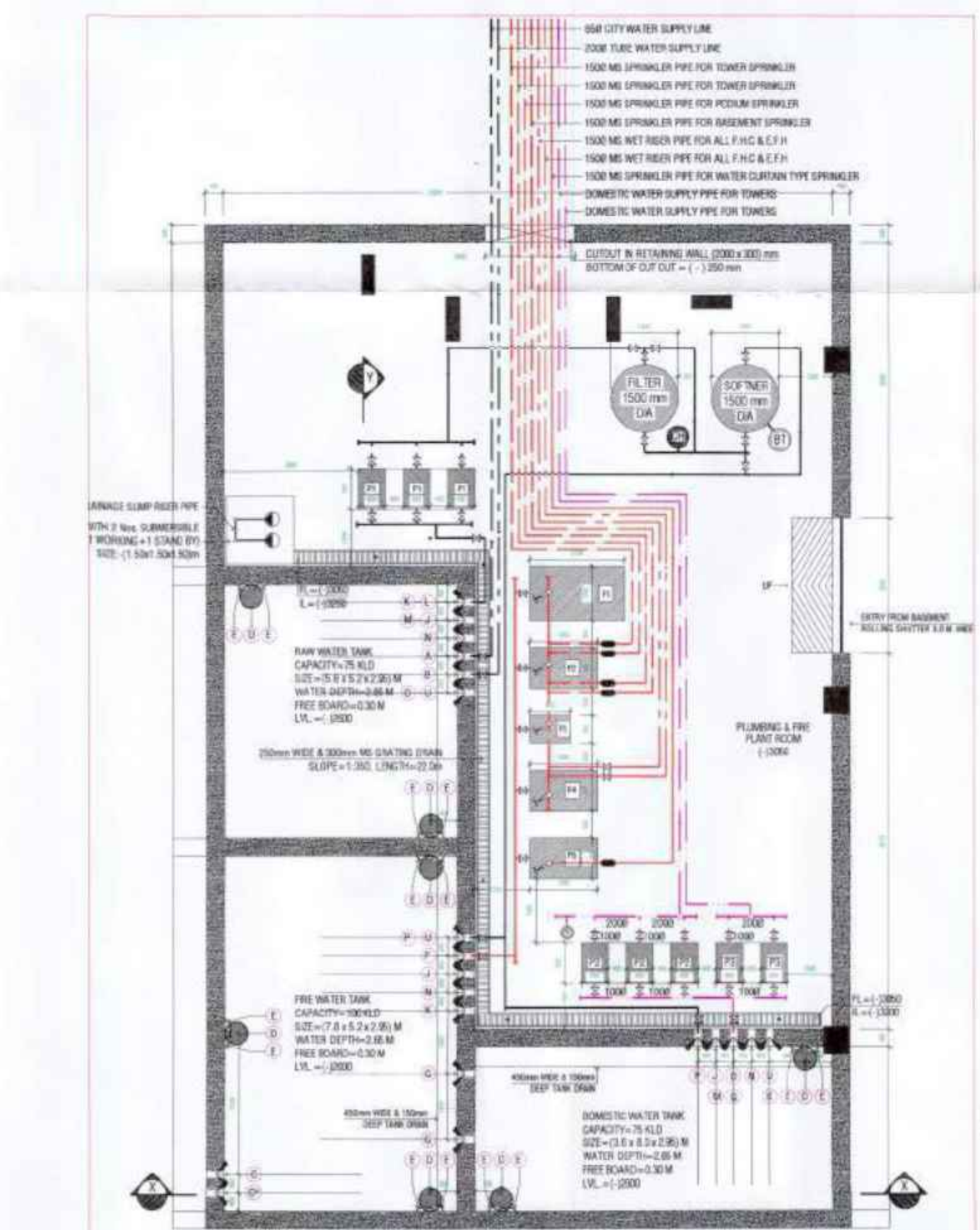
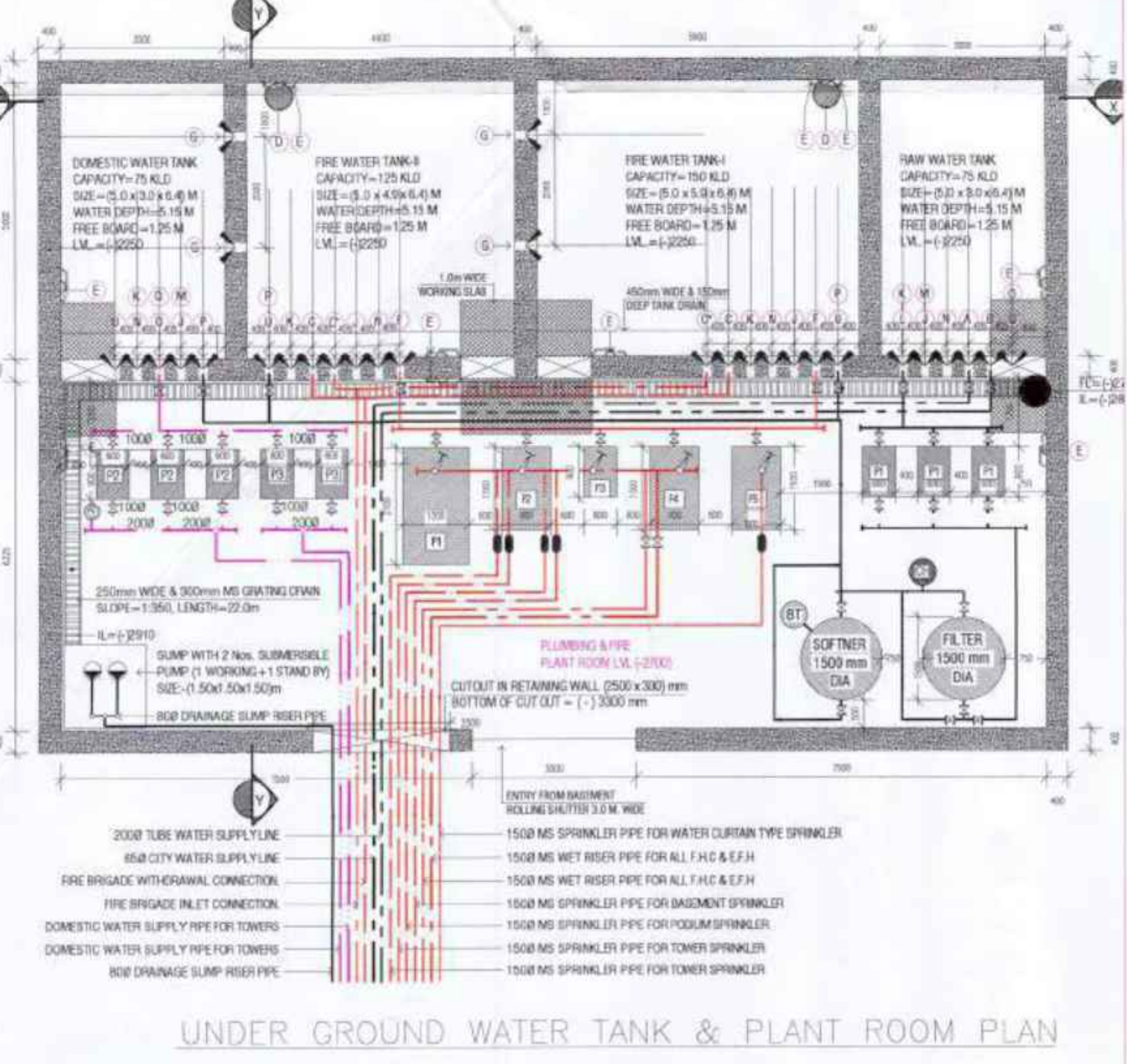
OWNER'S SIGN:

ARCHITECT'S SIGN:

DRG NO. CSP-1.2D

DATE: 15-05-2025

Authorised Signatory



STP
Municipal Engineer
B.P.A.C.

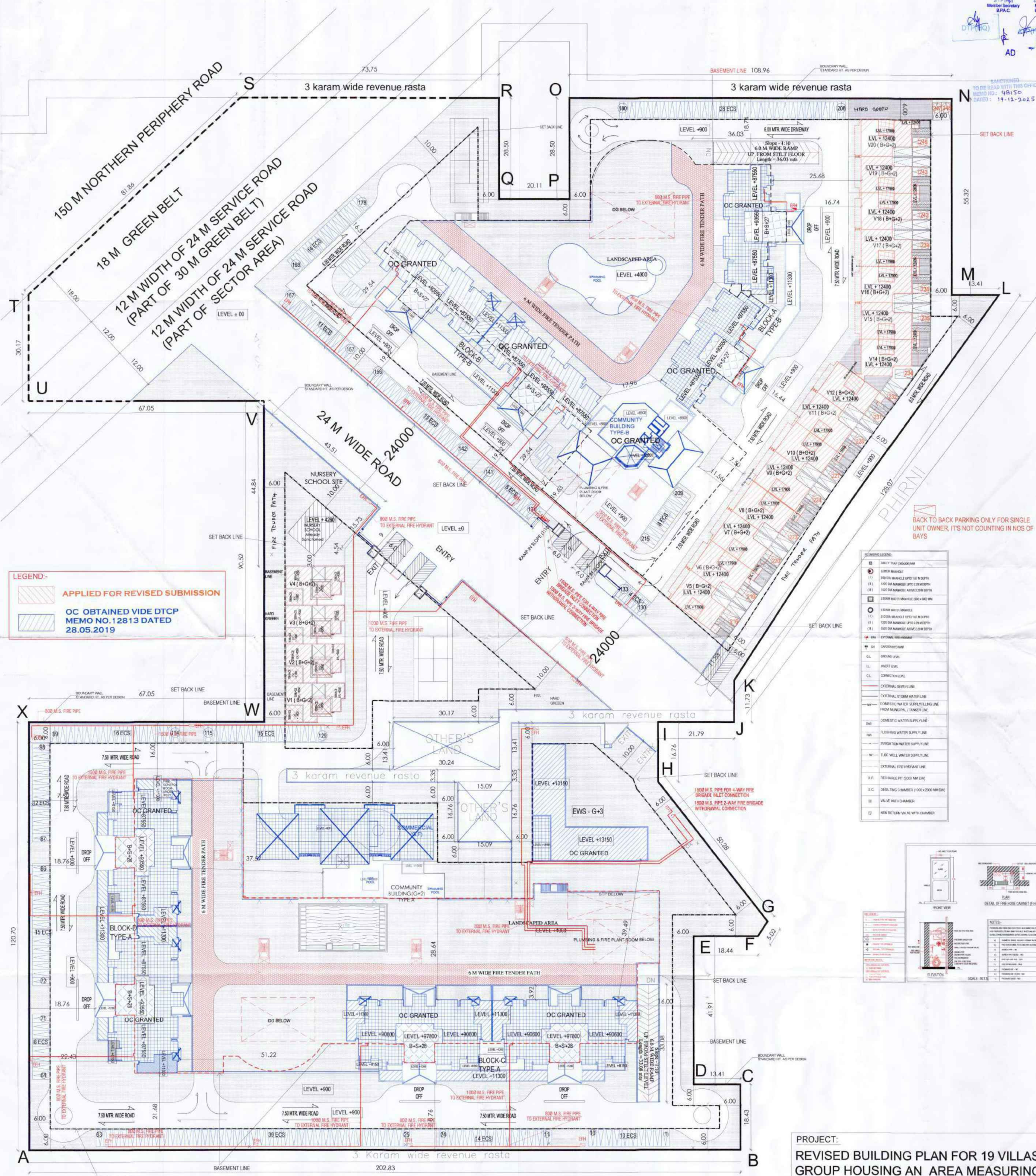
ETP
Municipal Engineer
B.P.A.C.

CLP
Municipal Engineer
B.P.A.C.

AD PA ATP

19-12-2025

Rajesh Dut
Municipal Engineer
B.P.A.C.

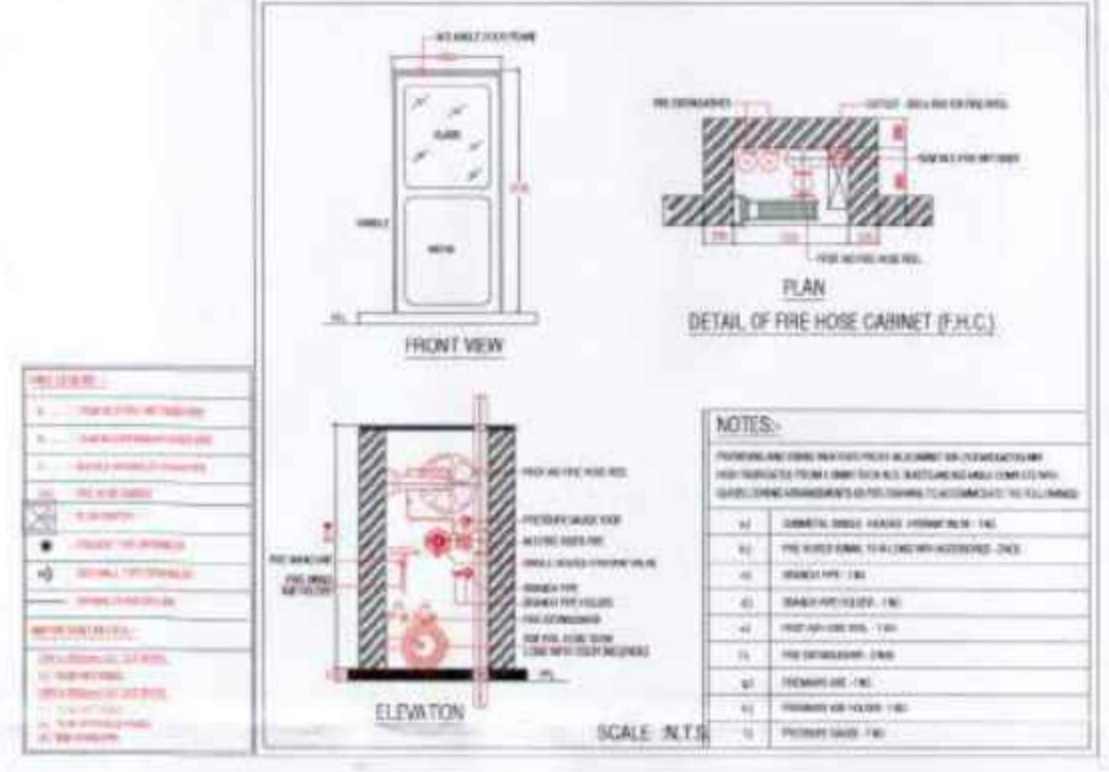


LEGEND-

- APPLIED FOR REVISED SUBMISSION
- OC OBTAINED VIDE DTCP MEMO NO. 12813 DATED 28.05.2019

SYMBOLS:

1	DRY TRIP CLOSURE VALVE
2	SPRINKLER
3	STANDARD HOSE REEL
4	STANDARD HOSE REEL (200 M)
5	STANDARD HOSE REEL (100 M)
6	STANDARD HOSE REEL (50 M)
7	STANDARD HOSE REEL (25 M)
8	STANDARD HOSE REEL (10 M)
9	STANDARD HOSE REEL (5 M)
10	STANDARD HOSE REEL (2.5 M)
11	STANDARD HOSE REEL (1.25 M)
12	STANDARD HOSE REEL (0.625 M)
13	STANDARD HOSE REEL (0.3125 M)
14	STANDARD HOSE REEL (0.15625 M)
15	STANDARD HOSE REEL (0.078125 M)
16	STANDARD HOSE REEL (0.0390625 M)
17	STANDARD HOSE REEL (0.01953125 M)
18	STANDARD HOSE REEL (0.009765625 M)
19	STANDARD HOSE REEL (0.0048828125 M)
20	STANDARD HOSE REEL (0.00244140625 M)
21	STANDARD HOSE REEL (0.001220703125 M)
22	STANDARD HOSE REEL (0.0006103515625 M)
23	STANDARD HOSE REEL (0.00030517578125 M)
24	STANDARD HOSE REEL (0.000152587890625 M)
25	STANDARD HOSE REEL (0.0000762939453125 M)
26	STANDARD HOSE REEL (0.00003814697265625 M)
27	STANDARD HOSE REEL (0.000019073486328125 M)
28	STANDARD HOSE REEL (0.0000095367431640625 M)
29	STANDARD HOSE REEL (0.00000476837158203125 M)
30	STANDARD HOSE REEL (0.000002384185791015625 M)
31	STANDARD HOSE REEL (0.0000011920928955078125 M)
32	STANDARD HOSE REEL (0.00000059604644775390625 M)
33	STANDARD HOSE REEL (0.000000298023223876953125 M)
34	STANDARD HOSE REEL (0.0000001490116119384765625 M)
35	STANDARD HOSE REEL (0.00000007450580596923828125 M)
36	STANDARD HOSE REEL (0.000000037252902984619140625 M)
37	STANDARD HOSE REEL (0.0000000186264514923095703125 M)
38	STANDARD HOSE REEL (0.00000000931322574615478515625 M)
39	STANDARD HOSE REEL (0.000000004656612873077392578125 M)
40	STANDARD HOSE REEL (0.0000000023283064365386962890625 M)
41	STANDARD HOSE REEL (0.00000000116415321826934814453125 M)
42	STANDARD HOSE REEL (0.00000000058207660913467407171875 M)
43	STANDARD HOSE REEL (0.000000000291038304567337035859375 M)
44	STANDARD HOSE REEL (0.00000000014551915228366851792928125 M)
45	STANDARD HOSE REEL (0.000000000072759576141834258964640625 M)
46	STANDARD HOSE REEL (0.0000000000363797880709171264823203125 M)
47	STANDARD HOSE REEL (0.00000000001818989403545856324116015625 M)
48	STANDARD HOSE REEL (0.0000000000090949470177292816205578125 M)
49	STANDARD HOSE REEL (0.00000000000454747350886408101027890625 M)
50	STANDARD HOSE REEL (0.000000000002273736754432040505139453125 M)
51	STANDARD HOSE REEL (0.00000000000113686837721602025257265625 M)
52	STANDARD HOSE REEL (0.000000000000568434188601012626286328125 M)
53	STANDARD HOSE REEL (0.00000000000028421709430050631313131640625 M)
54	STANDARD HOSE REEL (0.0000000000001421085471502531562628203125 M)
55	STANDARD HOSE REEL (0.0000000000000710542735751265631313131640625 M)
56	STANDARD HOSE REEL (0.00000000000003552713678756328162628203125 M)
57	STANDARD HOSE REEL (0.00000000000001776356839378162628203125 M)
58	STANDARD HOSE REEL (0.00000000000000888178419689081313131640625 M)
59	STANDARD HOSE REEL (0.00000000000000444089209844562628203125 M)
60	STANDARD HOSE REEL (0.00000000000000222044604922281313131640625 M)
61	STANDARD HOSE REEL (0.0000000000000011102230246114062628203125 M)
62	STANDARD HOSE REEL (0.00000000000000055511151230570313131640625 M)
63	STANDARD HOSE REEL (0.000000000000000277555756152351562628203125 M)
64	STANDARD HOSE REEL (0.00000000000000013877787807617813131640625 M)
65	STANDARD HOSE REEL (0.000000000000000069388939038089062628203125 M)
66	STANDARD HOSE REEL (0.0000000000000000346944695190445313131640625 M)
67	STANDARD HOSE REEL (0.000000000000000017347234759522262628203125 M)
68	STANDARD HOSE REEL (0.00000000000000000867361737976113131640625 M)
69	STANDARD HOSE REEL (0.000000000000000004336808689880562628203125 M)
70	STANDARD HOSE REEL (0.0000000000000000021684043449402813131640625 M)
71	STANDARD HOSE REEL (0.00000000000000000108420217247014062628203125 M)
72	STANDARD HOSE REEL (0.000000000000000000542101086235070313131640625 M)
73	STANDARD HOSE REEL (0.0000000000000000002710505431175351562628203125 M)
74	STANDARD HOSE REEL (0.000000000000000000135525271558787813131640625 M)
75	STANDARD HOSE REEL (0.0000000000000000000677626357793939062628203125 M)
76	STANDARD HOSE REEL (0.00000000000000000003388131788969695313131640625 M)
77	STANDARD HOSE REEL (0.0000000000000000000169406589448484762628203125 M)
78	STANDARD HOSE REEL (0.00000000000000000000847032947242423813131640625 M)
79	STANDARD HOSE REEL (0.000000000000000000004235164736212119062628203125 M)
80	STANDARD HOSE REEL (0.0000000000000000000021175823681050550313131640625 M)
81	STANDARD HOSE REEL (0.0000000000000000000010587911840525262628203125 M)
82	STANDARD HOSE REEL (0.00000000000000000000052939559202626313131640625 M)
83	STANDARD HOSE REEL (0.000000000000000000000264697796013131640625 M)
84	STANDARD HOSE REEL (0.00000000000000000000013234889800626313131640625 M)
85	STANDARD HOSE REEL (0.00000000000000000000006617444900313131640625 M)
86	STANDARD HOSE REEL (0.0000000000000000000000330872245015626313131640625 M)
87	STANDARD HOSE REEL (0.0000000000000000000000165436122507813131640625 M)
88	STANDARD HOSE REEL (0.000000000000000000000008271806125253813131640625 M)
89	STANDARD HOSE REEL (0.000000000000000000000004135903062626313131640625 M)
90	STANDARD HOSE REEL (0.0000000000000000000000020679515313131640625 M)
91	STANDARD HOSE REEL (0.000000000000000000000001033975765626313131640625 M)
92	STANDARD HOSE REEL (0.000000000000000000000000516987882813131640625 M)
93	STANDARD HOSE REEL (0.00000000000000000000000025849394140626313131640625 M)
94	STANDARD HOSE REEL (0.00000000000000000000000012924697070313131640625 M)
95	STANDARD HOSE REEL (0.0000000000000000000000000646234853515626313131640625 M)
96	STANDARD HOSE REEL (0.0000000000000000000000000323117426757813131640625 M)
97	STANDARD HOSE REEL (0.000000000000000000000000016155871337890626313131640625 M)
98	STANDARD HOSE REEL (0.00000000000000000000000000807793568940313131640625 M)
99	STANDARD HOSE REEL (0.0000000000000000000000000040389678447015626313131640625 M)
100	STANDARD HOSE REEL (0.0000000000000000000000000020194839223507813131640625 M)



PROJECT:
REVISED BUILDING PLAN FOR 19 VILLAS OF
GROUP HOUSING AN AREA MEASURING 14.093
ACRES (LICENCE NO. 10 OF 2012 DATED
03-02-2012 AND LICENCE NO. 63 OF 2011 DATED
16-07-2011 IN SECTOR-104, GURGAON MANESAR
URBAN COMPLEX BEING DEVELOPED BY GREAT
VALUE HPL INFRATECH PVT. LTD. AND OTHERS

DRAWING TITLE:
MASTER SITE LAYOUT PLAN FOR FIRE

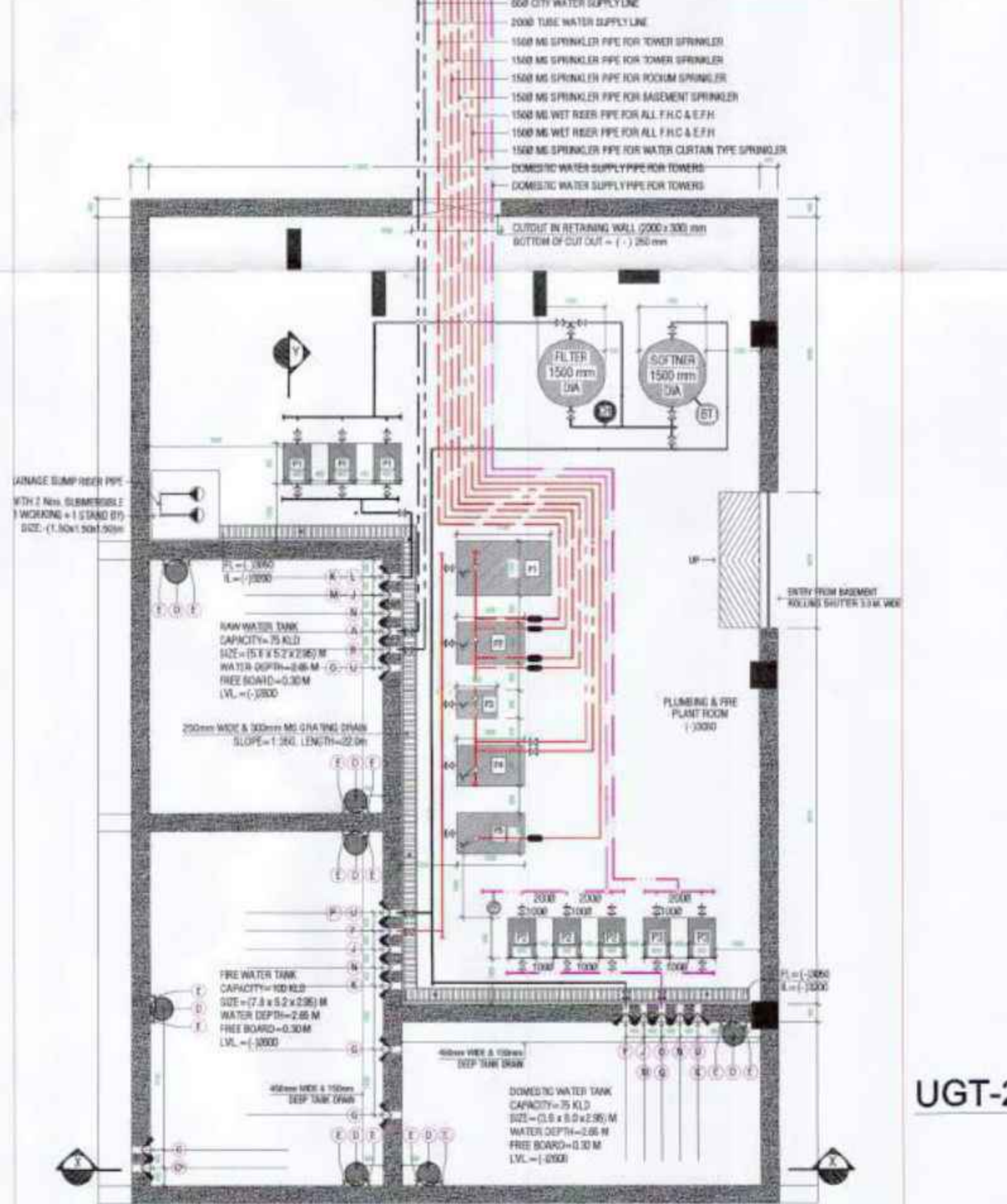
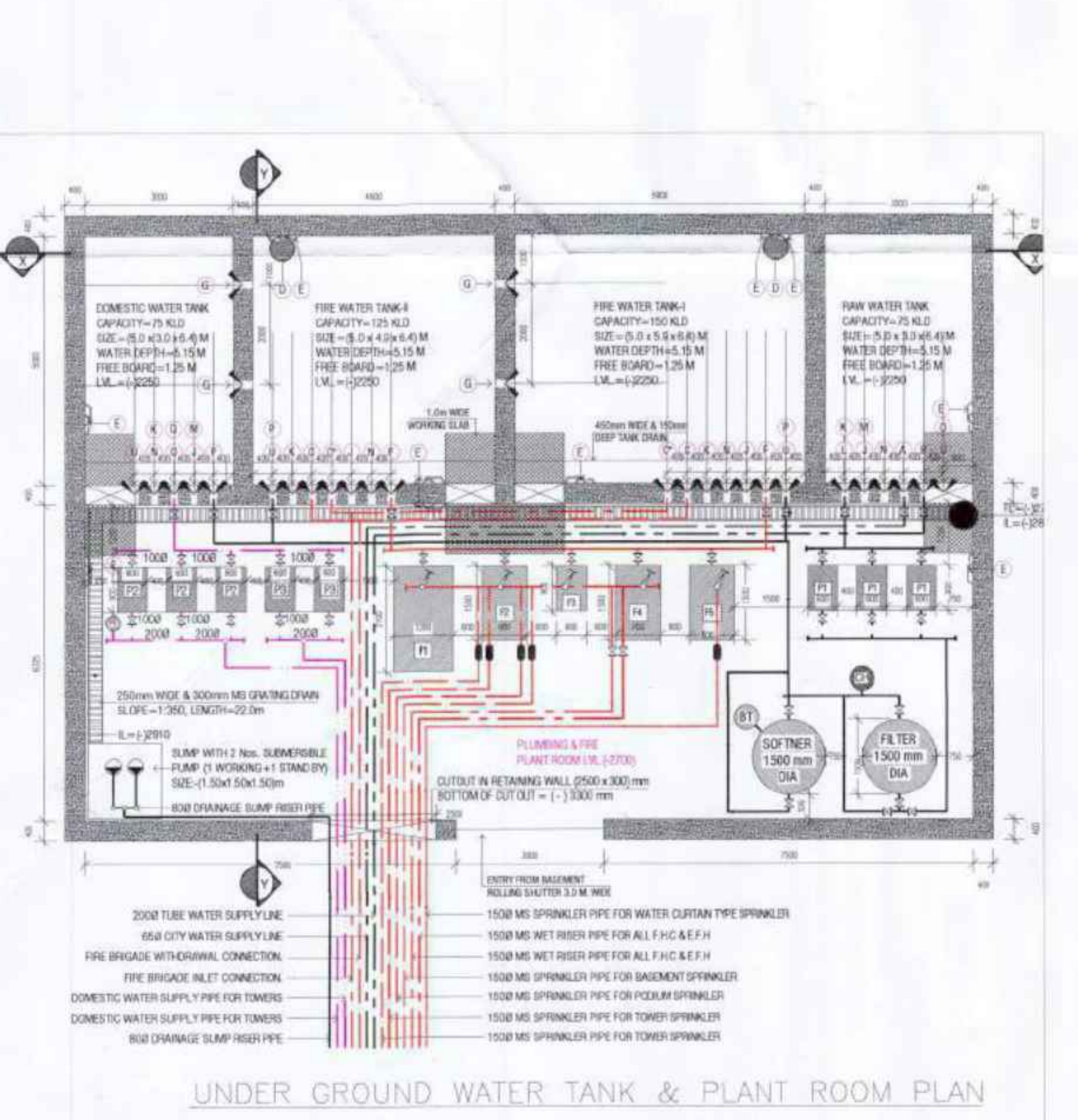
DEALT BY: SCALE: 1:100

CHECKED BY: DATE: 15-05-2025

THROUGH: AUTHORISED SIGNATORY

OWNER'S SIGN:

ARCHITECT'S SIGN:

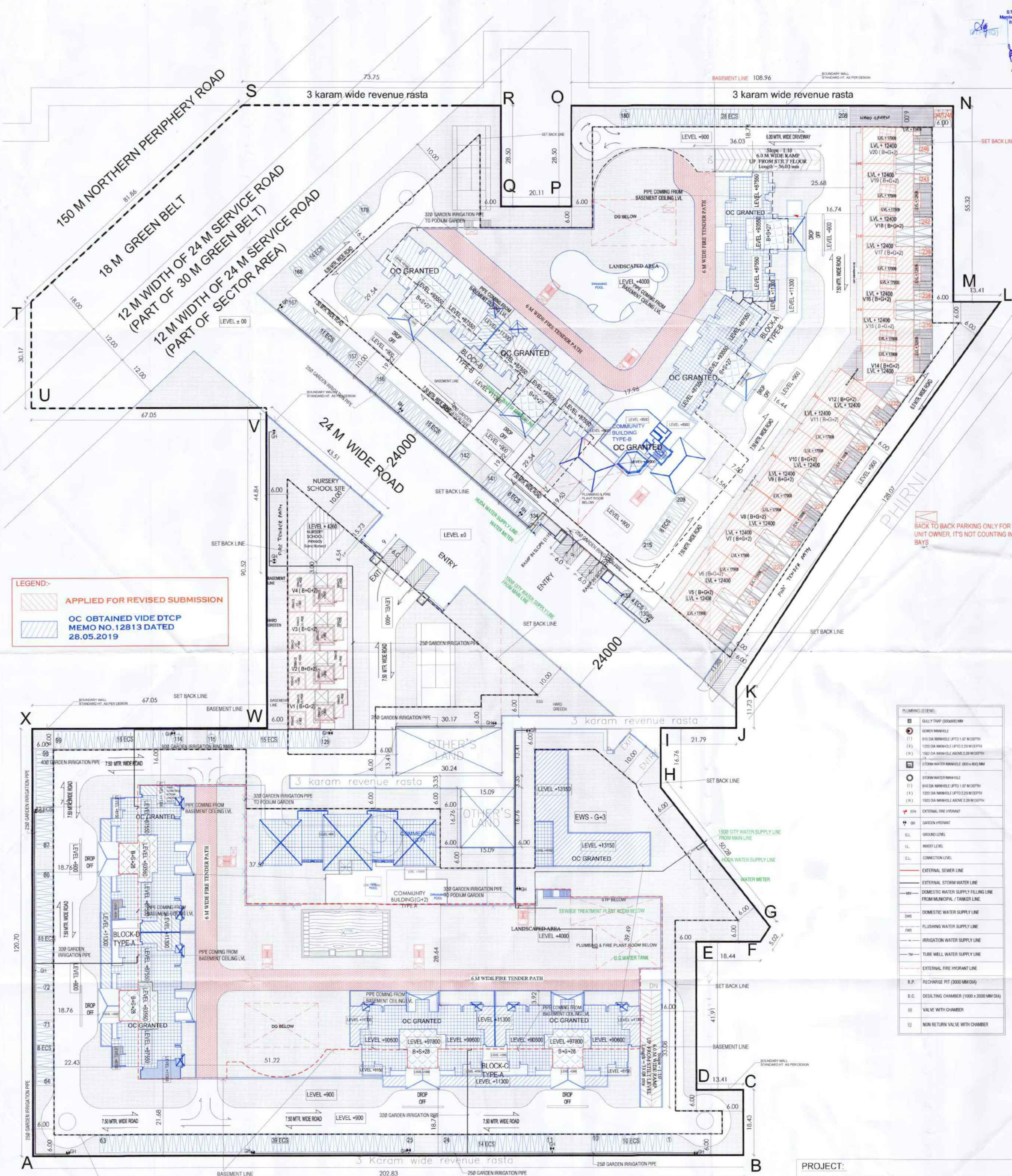


UNDERGROUND WATER TANK & PLANT ROOM PLAN

UGT-2

This is a "PROVISIONAL BUILDING PLAN" approved only for the purpose of pending objections from the general public.

BTP (H) Member BPAAC
 BTP (H) Member BPAAC
 CE (H) Member BPAAC
 AD
 PA
 ATP
 Rajesh Dutt SD (H)



LEGEND:-
 APPLIED FOR REVISED SUBMISSION
 OC OBTAINED VIDE DTCP MEMO NO. 12813 DATED 28.05.2019

BACK TO BACK PARKING ONLY FOR SINGLE UNIT OWNER, IT'S NOT COUNTING IN NOS OF BAYS

PLUMBING LEGEND:

BT	GULLY TRAP (300MM DIA)
SM	SEWER MANHOLE
(1)	300 DIA MANHOLE (PTD) 1.07 M DEPTH
(1.5)	300 DIA MANHOLE (PTD) 1.52 M DEPTH
(2)	300 DIA MANHOLE (PTD) 2.07 M DEPTH
(3)	300 DIA MANHOLE (PTD) 2.52 M DEPTH
(4)	300 DIA MANHOLE (PTD) 3.07 M DEPTH
(5)	300 DIA MANHOLE (PTD) 3.52 M DEPTH
(6)	300 DIA MANHOLE (PTD) 4.07 M DEPTH
(7)	300 DIA MANHOLE (PTD) 4.52 M DEPTH
(8)	300 DIA MANHOLE (PTD) 5.07 M DEPTH
(9)	300 DIA MANHOLE (PTD) 5.52 M DEPTH
(10)	300 DIA MANHOLE (PTD) 6.07 M DEPTH
(11)	300 DIA MANHOLE (PTD) 6.52 M DEPTH
(12)	300 DIA MANHOLE (PTD) 7.07 M DEPTH
(13)	300 DIA MANHOLE (PTD) 7.52 M DEPTH
(14)	300 DIA MANHOLE (PTD) 8.07 M DEPTH
(15)	300 DIA MANHOLE (PTD) 8.52 M DEPTH
(16)	300 DIA MANHOLE (PTD) 9.07 M DEPTH
(17)	300 DIA MANHOLE (PTD) 9.52 M DEPTH
(18)	300 DIA MANHOLE (PTD) 10.07 M DEPTH
(19)	300 DIA MANHOLE (PTD) 10.52 M DEPTH
(20)	300 DIA MANHOLE (PTD) 11.07 M DEPTH
(21)	300 DIA MANHOLE (PTD) 11.52 M DEPTH
(22)	300 DIA MANHOLE (PTD) 12.07 M DEPTH
(23)	300 DIA MANHOLE (PTD) 12.52 M DEPTH
(24)	300 DIA MANHOLE (PTD) 13.07 M DEPTH
(25)	300 DIA MANHOLE (PTD) 13.52 M DEPTH
(26)	300 DIA MANHOLE (PTD) 14.07 M DEPTH
(27)	300 DIA MANHOLE (PTD) 14.52 M DEPTH
(28)	300 DIA MANHOLE (PTD) 15.07 M DEPTH
(29)	300 DIA MANHOLE (PTD) 15.52 M DEPTH
(30)	300 DIA MANHOLE (PTD) 16.07 M DEPTH
(31)	300 DIA MANHOLE (PTD) 16.52 M DEPTH
(32)	300 DIA MANHOLE (PTD) 17.07 M DEPTH
(33)	300 DIA MANHOLE (PTD) 17.52 M DEPTH
(34)	300 DIA MANHOLE (PTD) 18.07 M DEPTH
(35)	300 DIA MANHOLE (PTD) 18.52 M DEPTH
(36)	300 DIA MANHOLE (PTD) 19.07 M DEPTH
(37)	300 DIA MANHOLE (PTD) 19.52 M DEPTH
(38)	300 DIA MANHOLE (PTD) 20.07 M DEPTH
(39)	300 DIA MANHOLE (PTD) 20.52 M DEPTH
(40)	300 DIA MANHOLE (PTD) 21.07 M DEPTH
(41)	300 DIA MANHOLE (PTD) 21.52 M DEPTH
(42)	300 DIA MANHOLE (PTD) 22.07 M DEPTH
(43)	300 DIA MANHOLE (PTD) 22.52 M DEPTH
(44)	300 DIA MANHOLE (PTD) 23.07 M DEPTH
(45)	300 DIA MANHOLE (PTD) 23.52 M DEPTH
(46)	300 DIA MANHOLE (PTD) 24.07 M DEPTH
(47)	300 DIA MANHOLE (PTD) 24.52 M DEPTH
(48)	300 DIA MANHOLE (PTD) 25.07 M DEPTH
(49)	300 DIA MANHOLE (PTD) 25.52 M DEPTH
(50)	300 DIA MANHOLE (PTD) 26.07 M DEPTH
(51)	300 DIA MANHOLE (PTD) 26.52 M DEPTH
(52)	300 DIA MANHOLE (PTD) 27.07 M DEPTH
(53)	300 DIA MANHOLE (PTD) 27.52 M DEPTH
(54)	300 DIA MANHOLE (PTD) 28.07 M DEPTH
(55)	300 DIA MANHOLE (PTD) 28.52 M DEPTH
(56)	300 DIA MANHOLE (PTD) 29.07 M DEPTH
(57)	300 DIA MANHOLE (PTD) 29.52 M DEPTH
(58)	300 DIA MANHOLE (PTD) 30.07 M DEPTH
(59)	300 DIA MANHOLE (PTD) 30.52 M DEPTH
(60)	300 DIA MANHOLE (PTD) 31.07 M DEPTH
(61)	300 DIA MANHOLE (PTD) 31.52 M DEPTH
(62)	300 DIA MANHOLE (PTD) 32.07 M DEPTH
(63)	300 DIA MANHOLE (PTD) 32.52 M DEPTH
(64)	300 DIA MANHOLE (PTD) 33.07 M DEPTH
(65)	300 DIA MANHOLE (PTD) 33.52 M DEPTH
(66)	300 DIA MANHOLE (PTD) 34.07 M DEPTH
(67)	300 DIA MANHOLE (PTD) 34.52 M DEPTH
(68)	300 DIA MANHOLE (PTD) 35.07 M DEPTH
(69)	300 DIA MANHOLE (PTD) 35.52 M DEPTH
(70)	300 DIA MANHOLE (PTD) 36.07 M DEPTH
(71)	300 DIA MANHOLE (PTD) 36.52 M DEPTH
(72)	300 DIA MANHOLE (PTD) 37.07 M DEPTH
(73)	300 DIA MANHOLE (PTD) 37.52 M DEPTH
(74)	300 DIA MANHOLE (PTD) 38.07 M DEPTH
(75)	300 DIA MANHOLE (PTD) 38.52 M DEPTH
(76)	300 DIA MANHOLE (PTD) 39.07 M DEPTH
(77)	300 DIA MANHOLE (PTD) 39.52 M DEPTH
(78)	300 DIA MANHOLE (PTD) 40.07 M DEPTH
(79)	300 DIA MANHOLE (PTD) 40.52 M DEPTH
(80)	300 DIA MANHOLE (PTD) 41.07 M DEPTH
(81)	300 DIA MANHOLE (PTD) 41.52 M DEPTH
(82)	300 DIA MANHOLE (PTD) 42.07 M DEPTH
(83)	300 DIA MANHOLE (PTD) 42.52 M DEPTH
(84)	300 DIA MANHOLE (PTD) 43.07 M DEPTH
(85)	300 DIA MANHOLE (PTD) 43.52 M DEPTH
(86)	300 DIA MANHOLE (PTD) 44.07 M DEPTH
(87)	300 DIA MANHOLE (PTD) 44.52 M DEPTH
(88)	300 DIA MANHOLE (PTD) 45.07 M DEPTH
(89)	300 DIA MANHOLE (PTD) 45.52 M DEPTH
(90)	300 DIA MANHOLE (PTD) 46.07 M DEPTH
(91)	300 DIA MANHOLE (PTD) 46.52 M DEPTH
(92)	300 DIA MANHOLE (PTD) 47.07 M DEPTH
(93)	300 DIA MANHOLE (PTD) 47.52 M DEPTH
(94)	300 DIA MANHOLE (PTD) 48.07 M DEPTH
(95)	300 DIA MANHOLE (PTD) 48.52 M DEPTH
(96)	300 DIA MANHOLE (PTD) 49.07 M DEPTH
(97)	300 DIA MANHOLE (PTD) 49.52 M DEPTH
(98)	300 DIA MANHOLE (PTD) 50.07 M DEPTH
(99)	300 DIA MANHOLE (PTD) 50.52 M DEPTH
(100)	300 DIA MANHOLE (PTD) 51.07 M DEPTH
(101)	300 DIA MANHOLE (PTD) 51.52 M DEPTH
(102)	300 DIA MANHOLE (PTD) 52.07 M DEPTH
(103)	300 DIA MANHOLE (PTD) 52.52 M DEPTH
(104)	300 DIA MANHOLE (PTD) 53.07 M DEPTH
(105)	300 DIA MANHOLE (PTD) 53.52 M DEPTH
(106)	300 DIA MANHOLE (PTD) 54.07 M DEPTH
(107)	300 DIA MANHOLE (PTD) 54.52 M DEPTH
(108)	300 DIA MANHOLE (PTD) 55.07 M DEPTH
(109)	300 DIA MANHOLE (PTD) 55.52 M DEPTH
(110)	300 DIA MANHOLE (PTD) 56.07 M DEPTH
(111)	300 DIA MANHOLE (PTD) 56.52 M DEPTH
(112)	300 DIA MANHOLE (PTD) 57.07 M DEPTH
(113)	300 DIA MANHOLE (PTD) 57.52 M DEPTH
(114)	300 DIA MANHOLE (PTD) 58.07 M DEPTH
(115)	300 DIA MANHOLE (PTD) 58.52 M DEPTH
(116)	300 DIA MANHOLE (PTD) 59.07 M DEPTH
(117)	300 DIA MANHOLE (PTD) 59.52 M DEPTH
(118)	300 DIA MANHOLE (PTD) 60.07 M DEPTH
(119)	300 DIA MANHOLE (PTD) 60.52 M DEPTH
(120)	300 DIA MANHOLE (PTD) 61.07 M DEPTH
(121)	300 DIA MANHOLE (PTD) 61.52 M DEPTH
(122)	300 DIA MANHOLE (PTD) 62.07 M DEPTH
(123)	300 DIA MANHOLE (PTD) 62.52 M DEPTH
(124)	300 DIA MANHOLE (PTD) 63.07 M DEPTH
(125)	300 DIA MANHOLE (PTD) 63.52 M DEPTH
(126)	300 DIA MANHOLE (PTD) 64.07 M DEPTH
(127)	300 DIA MANHOLE (PTD) 64.52 M DEPTH
(128)	300 DIA MANHOLE (PTD) 65.07 M DEPTH
(129)	300 DIA MANHOLE (PTD) 65.52 M DEPTH
(130)	300 DIA MANHOLE (PTD) 66.07 M DEPTH
(131)	300 DIA MANHOLE (PTD) 66.52 M DEPTH
(132)	300 DIA MANHOLE (PTD) 67.07 M DEPTH
(133)	300 DIA MANHOLE (PTD) 67.52 M DEPTH
(134)	300 DIA MANHOLE (PTD) 68.07 M DEPTH
(135)	300 DIA MANHOLE (PTD) 68.52 M DEPTH
(136)	300 DIA MANHOLE (PTD) 69.07 M DEPTH
(137)	300 DIA MANHOLE (PTD) 69.52 M DEPTH
(138)	300 DIA MANHOLE (PTD) 70.07 M DEPTH
(139)	300 DIA MANHOLE (PTD) 70.52 M DEPTH
(140)	300 DIA MANHOLE (PTD) 71.07 M DEPTH
(141)	300 DIA MANHOLE (PTD) 71.52 M DEPTH
(142)	300 DIA MANHOLE (PTD) 72.07 M DEPTH
(143)	300 DIA MANHOLE (PTD) 72.52 M DEPTH
(144)	300 DIA MANHOLE (PTD) 73.07 M DEPTH
(145)	300 DIA MANHOLE (PTD) 73.52 M DEPTH
(146)	300 DIA MANHOLE (PTD) 74.07 M DEPTH
(147)	300 DIA MANHOLE (PTD) 74.52 M DEPTH
(148)	300 DIA MANHOLE (PTD) 75.07 M DEPTH
(149)	300 DIA MANHOLE (PTD) 75.52 M DEPTH
(150)	300 DIA MANHOLE (PTD) 76.07 M DEPTH
(151)	300 DIA MANHOLE (PTD) 76.52 M DEPTH
(152)	300 DIA MANHOLE (PTD) 77.07 M DEPTH
(153)	300 DIA MANHOLE (PTD) 77.52 M DEPTH
(154)	300 DIA MANHOLE (PTD) 78.07 M DEPTH
(155)	300 DIA MANHOLE (PTD) 78.52 M DEPTH
(156)	300 DIA MANHOLE (PTD) 79.07 M DEPTH
(157)	300 DIA MANHOLE (PTD) 79.52 M DEPTH
(158)	300 DIA MANHOLE (PTD) 80.07 M DEPTH
(159)	300 DIA MANHOLE (PTD) 80.52 M DEPTH
(160)	300 DIA MANHOLE (PTD) 81.07 M DEPTH
(161)	300 DIA MANHOLE (PTD) 81.52 M DEPTH
(162)	300 DIA MANHOLE (PTD) 82.07 M DEPTH
(163)	300 DIA MANHOLE (PTD) 82.52 M DEPTH
(164)	300 DIA MANHOLE (PTD) 83.07 M DEPTH
(165)	300 DIA MANHOLE (PTD) 83.52 M DEPTH
(166)	300 DIA MANHOLE (PTD) 84.07 M DEPTH
(167)	300 DIA MANHOLE (PTD) 84.52 M DEPTH
(168)	300 DIA MANHOLE (PTD) 85.07 M DEPTH
(169)	300 DIA MANHOLE (PTD) 85.52 M DEPTH
(170)	300 DIA MANHOLE (PTD) 86.07 M DEPTH
(171)	300 DIA MANHOLE (PTD) 86.52 M DEPTH
(172)	300 DIA MANHOLE (PTD) 87.07 M DEPTH
(173)	300 DIA MANHOLE (PTD) 87.52 M DEPTH
(174)	300 DIA MANHOLE (PTD) 88.07 M DEPTH
(175)	300 DIA MANHOLE (PTD) 88.52 M DEPTH
(176)	300 DIA MANHOLE (PTD) 89.07 M DEPTH
(177)	300 DIA MANHOLE (PTD) 89.52 M DEPTH
(178)	300 DIA MANHOLE (PTD) 90.07 M DEPTH
(179)	300 DIA MANHOLE (PTD) 90.52 M DEPTH
(180)	300 DIA MANHOLE (PTD) 91.07 M DEPTH
(181)	300 DIA MANHOLE (PTD) 91.52 M DEPTH
(182)	300 DIA MANHOLE (PTD) 92.07 M DEPTH
(183)	300 DIA MANHOLE (PTD) 92.52 M DEPTH
(184)	300 DIA MANHOLE (PTD) 93.07 M DEPTH
(185)	300 DIA MANHOLE (PTD) 93.52 M DEPTH
(186)	300 DIA MANHOLE (PTD) 94.07 M DEPTH
(187)	300 DIA MANHOLE (PTD) 94.52 M DEPTH
(188)	300 DIA MANHOLE (PTD) 95.07 M DEPTH
(189)	300 DIA MANHOLE (PTD) 95.52 M DEPTH
(190)	300 DIA MANHOLE (PTD) 96.07 M DEPTH
(191)	300 DIA MANHOLE (PTD) 96.52 M DEPTH
(192)	300 DIA MANHOLE (PTD) 97.07 M DEPTH
(193)	300 DIA MANHOLE (PTD) 97.52 M DEPTH
(194)	300 DIA MANHOLE (PTD) 98.07 M DEPTH
(195)	300 DIA MANHOLE (PTD) 98.52 M DEPTH
(196)	300 DIA MANHOLE (PTD) 99.07 M DEPTH
(197)	300 DIA MANHOLE (PTD) 99.52 M DEPTH
(198)	300 DIA MANHOLE (PTD) 100.07 M DEPTH
(199)	300 DIA MANHOLE (PTD) 100.52 M DEPTH
(200)	300 DIA MANHOLE (PTD) 101.07 M DEPTH

PROJECT:
 REVISED BUILDING PLAN FOR 19 VILLAS OF GROUP HOUSING AN AREA MEASURING 14.093 ACRES (LICENCE NO. 10 OF 2012 DATED 03-02-2012 AND LICENCE NO. 63 OF 2011 DATED 16-07-2011 IN SECTOR-104, GURGAON MANESAR URBAN COMPLEX BEING DEVELOPED BY GREAT VALUE HPL INFRATECH PVT. LTD. AND OTHERS

DRAWING TITLE :
 MASTER SITE LAYOUT PLAN FOR IRRIGATION

DEALT BY :
 SCALE : 1:100

CHECKED BY :
 DATE: -15-05-2025

THROUGH : AUTHORISED SIGNATORY

Great Value HPL Infratech Pvt. Ltd.
 Authorised Signatory

DRG. NO. SP-02C
 DRG. NO. SP-02C

Jeyanand
 Member BPAAC

AR. RAJESH DUTT
 CA/2017/8000
 5th Floor, 5th, 5th Floor
 Opp. Health Office Sector-14 Gurgaon
 Mob: 9700172670

OWNER'S SIGN ARCHITECT'S SIGN