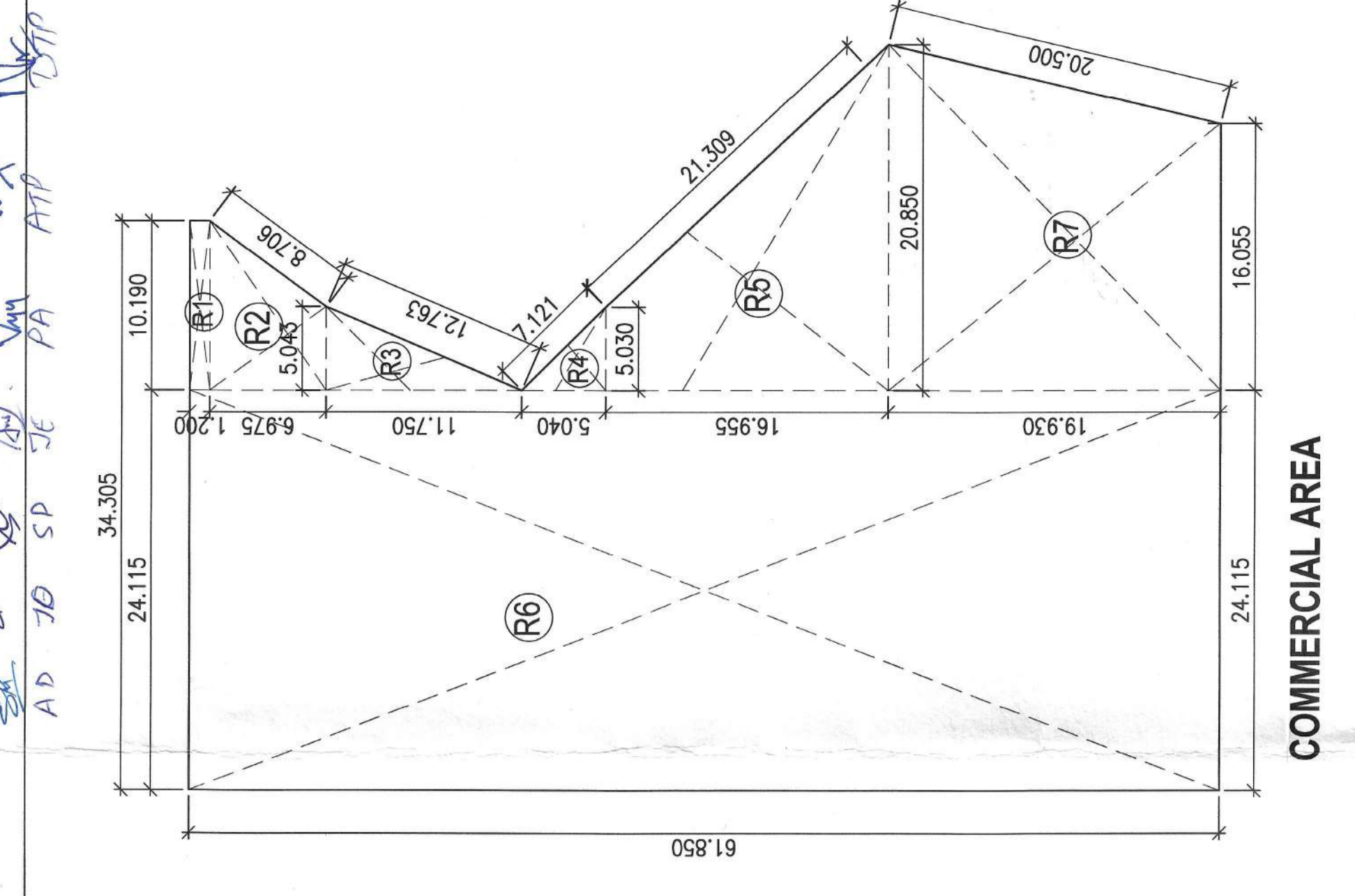
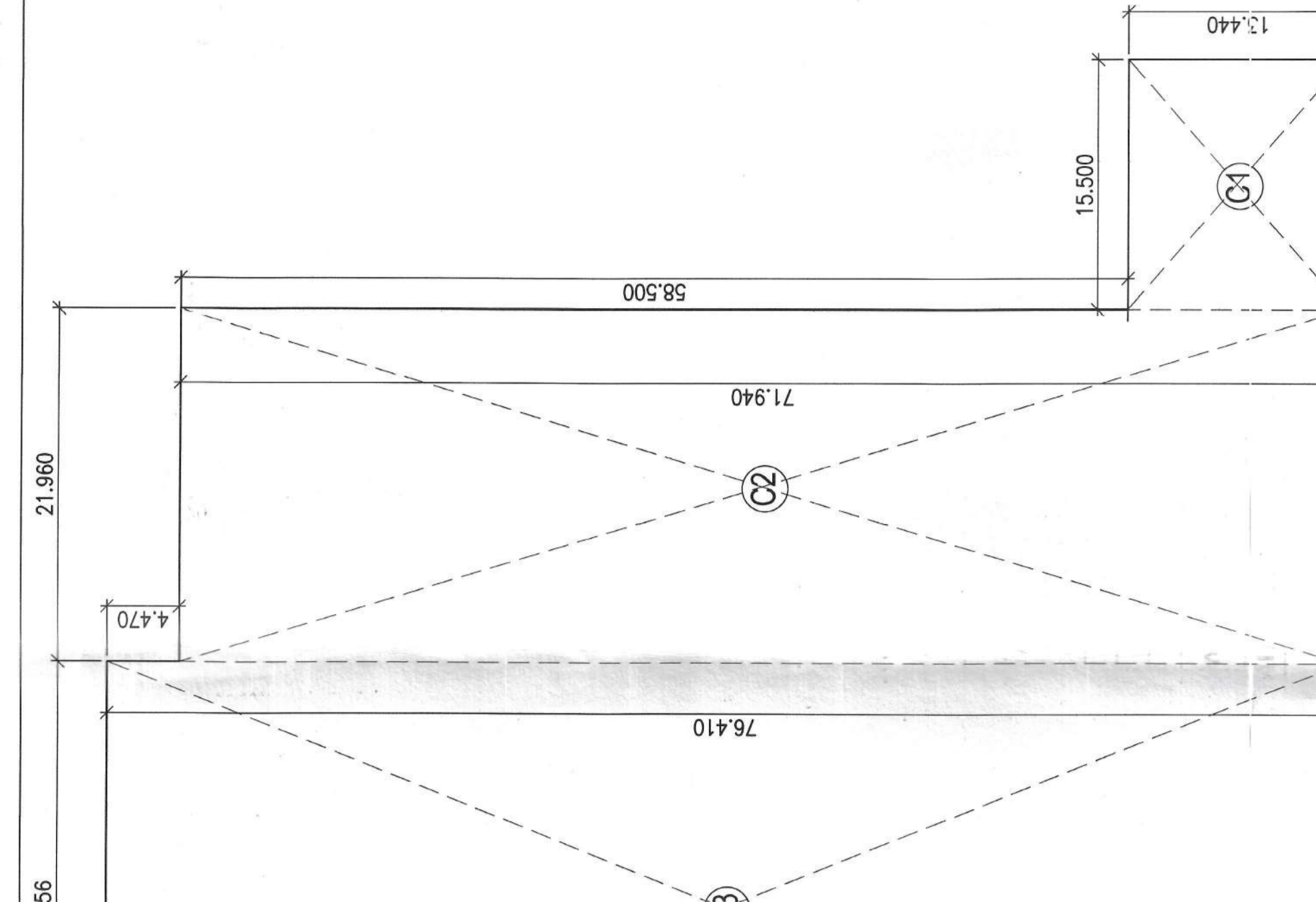


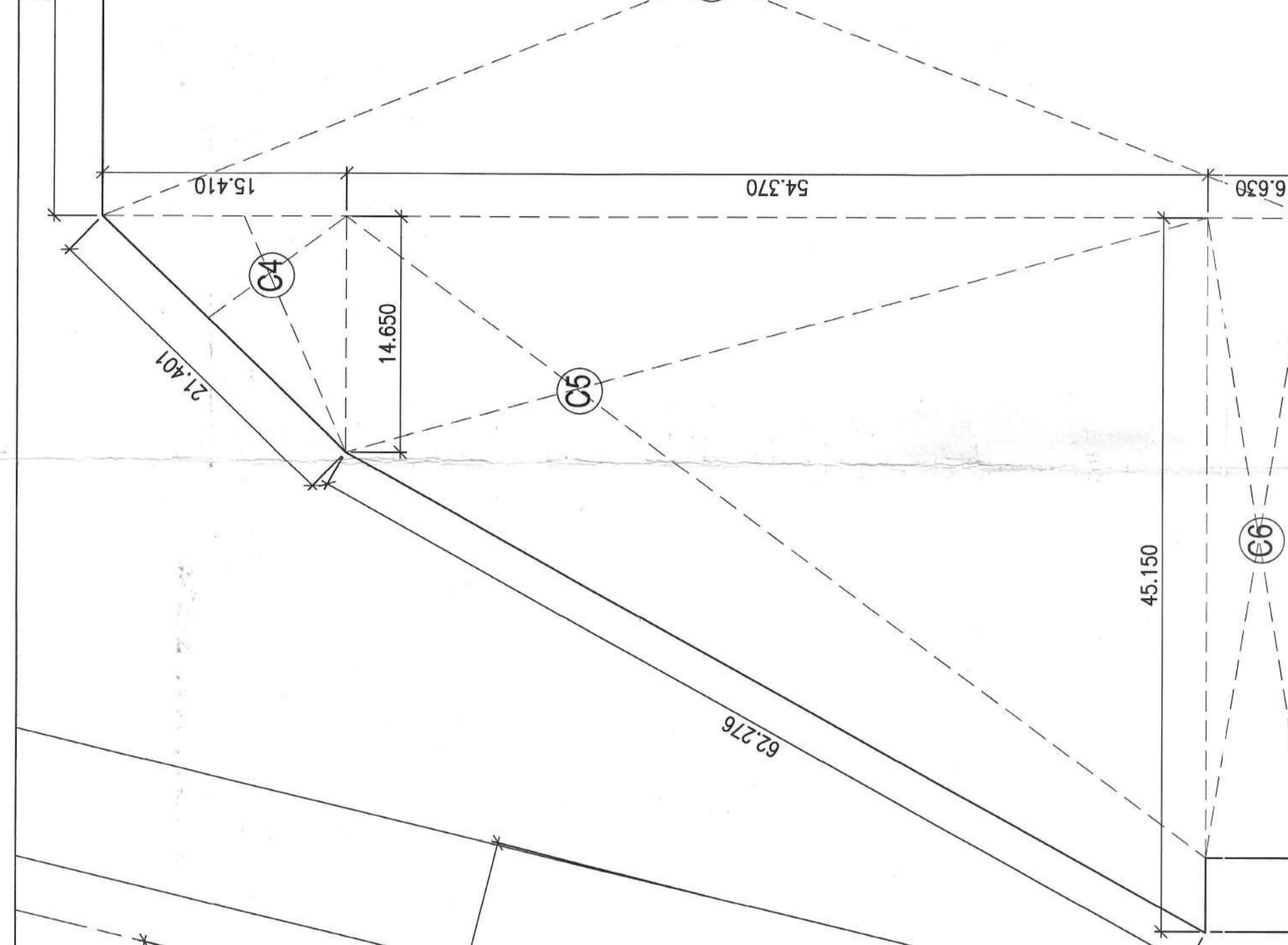
AD 30 SP SE MA ATX



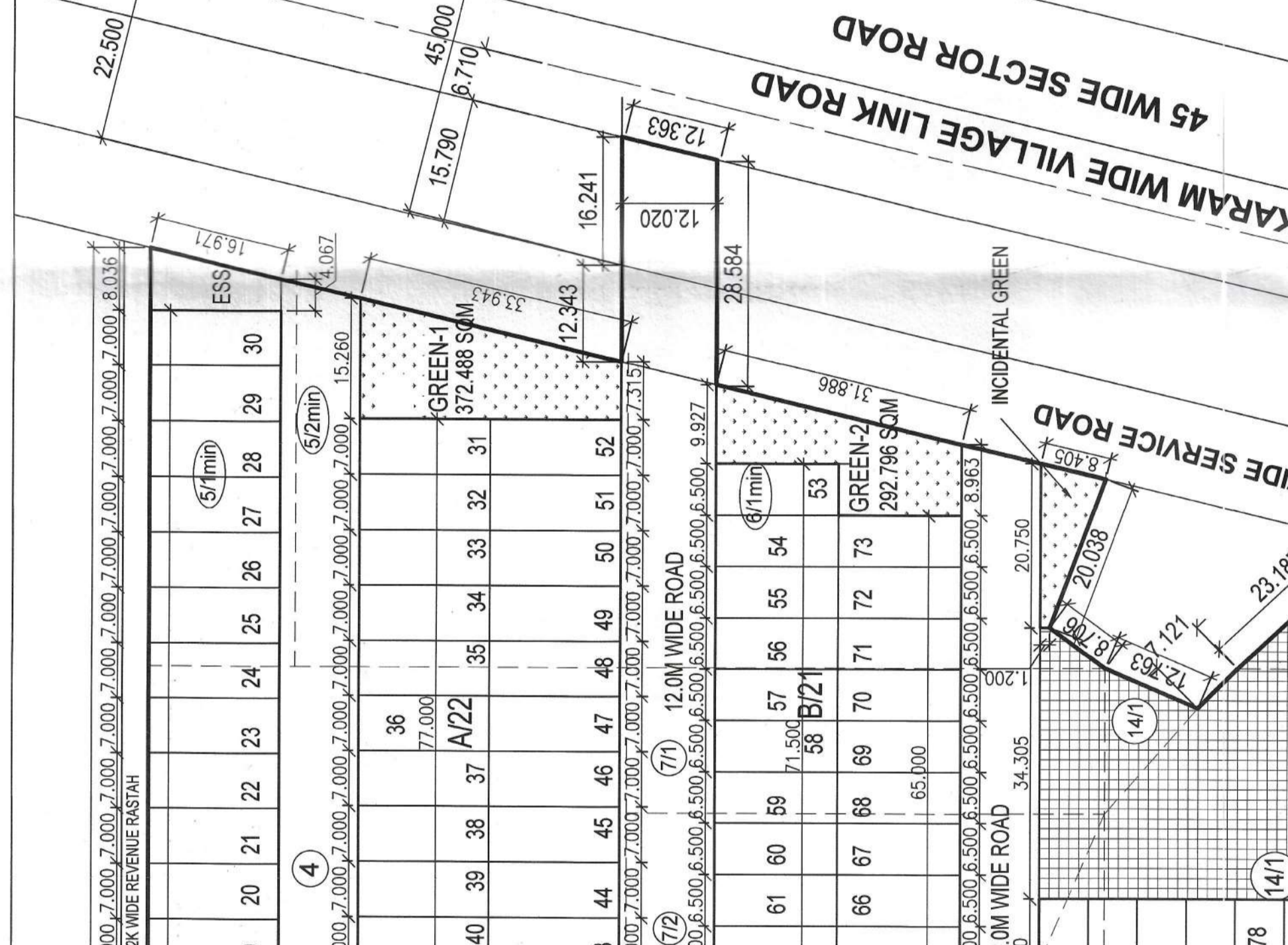
S.NO	CODE	WIDTH IN M	LENGTH IN M	AREA/PILOT IN SQM
1	R1	10.190	1.200	12.228
2	R2	10.190	0.851	8.672
3	R3	17.935	0.851	15.238
4	R4	15.000	0.851	12.765
5	R5	15.000	0.851	12.765
6	R6	24.115	61.850	1487.513
7	R7	16.055	20.850	334.758
TOTAL				2186.335
OR IN AC				0.54025



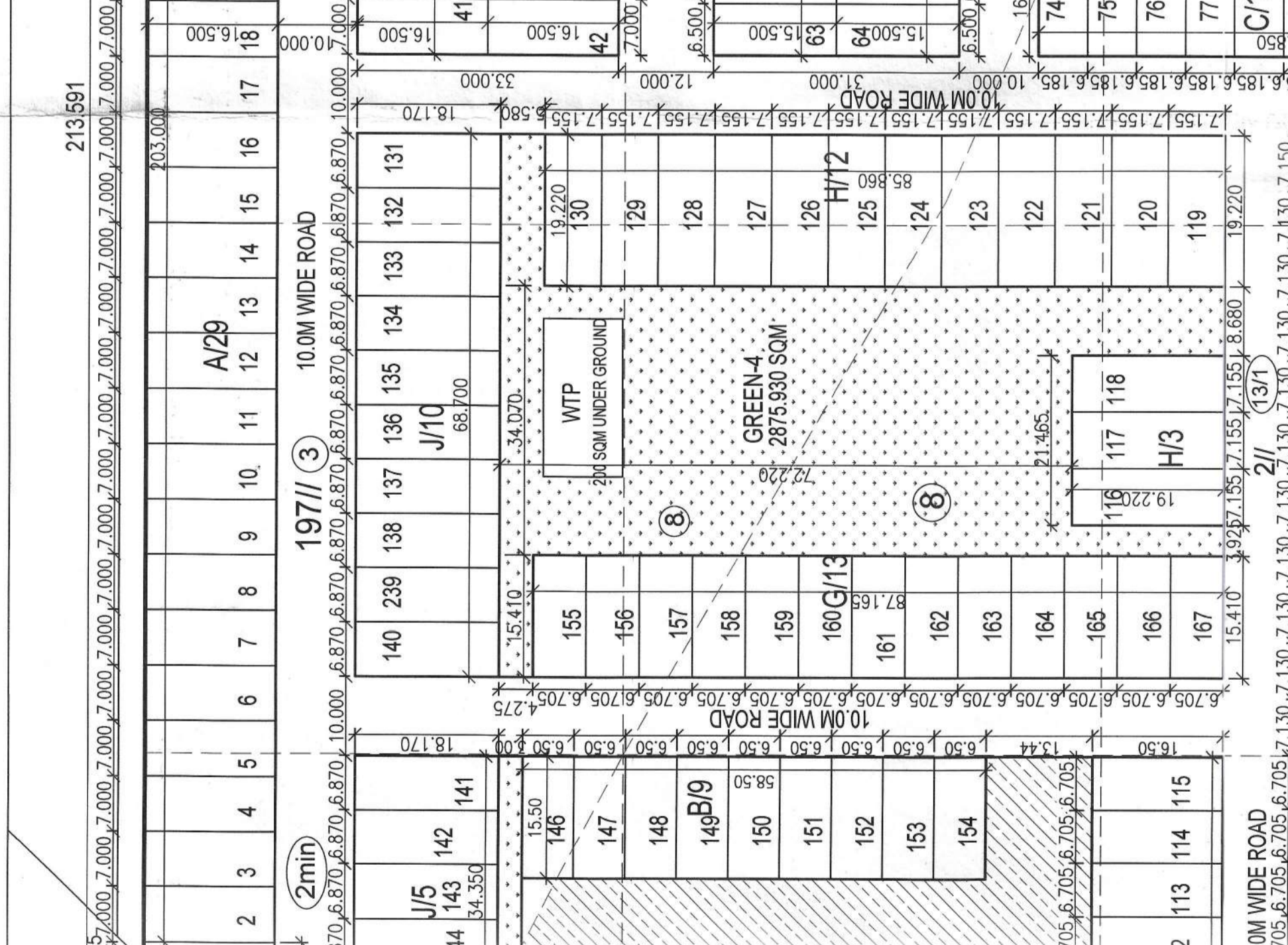
S.NO	CODE	WIDTH IN M	LENGTH IN M	AREA/PILOT IN SQM
1	C1	15.500	13.440	208.320
2	C2	21.960	71.940	1579.802
3	C3	30.560	76.410	2335.090
4	C4	1/24.115	62.961	1117.876
5	C5	14.659	45.159	663.878
6	C6	40.475	6.630	268.349
TOTAL				6330.102
OR IN AC				1.54478



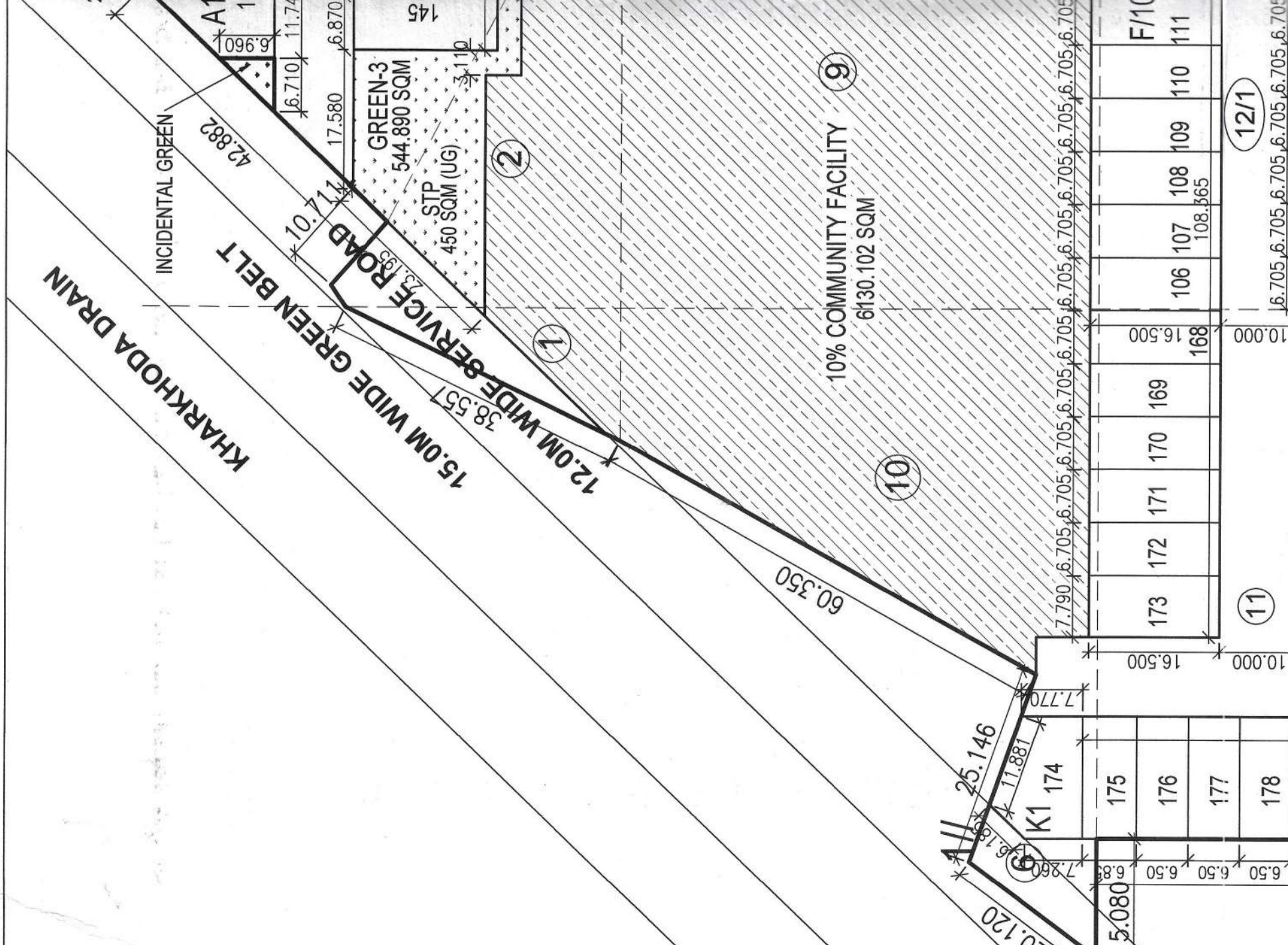
S.NO	CODE	WIDTH IN M	LENGTH IN M	AREA/PILOT IN SQM
1	G1	17.315	15.200	263.180
2	G2	6.195	9.927	61.500
3	G3	18.953	12.695	240.550
4	G4	17.584	32.670	574.700
5	G5	3.110	4.070	12.650
6	G6	34.350	3.000	103.050
SUB TOTAL				544.880
TOTAL				1077.280
OR IN AC				0.24276



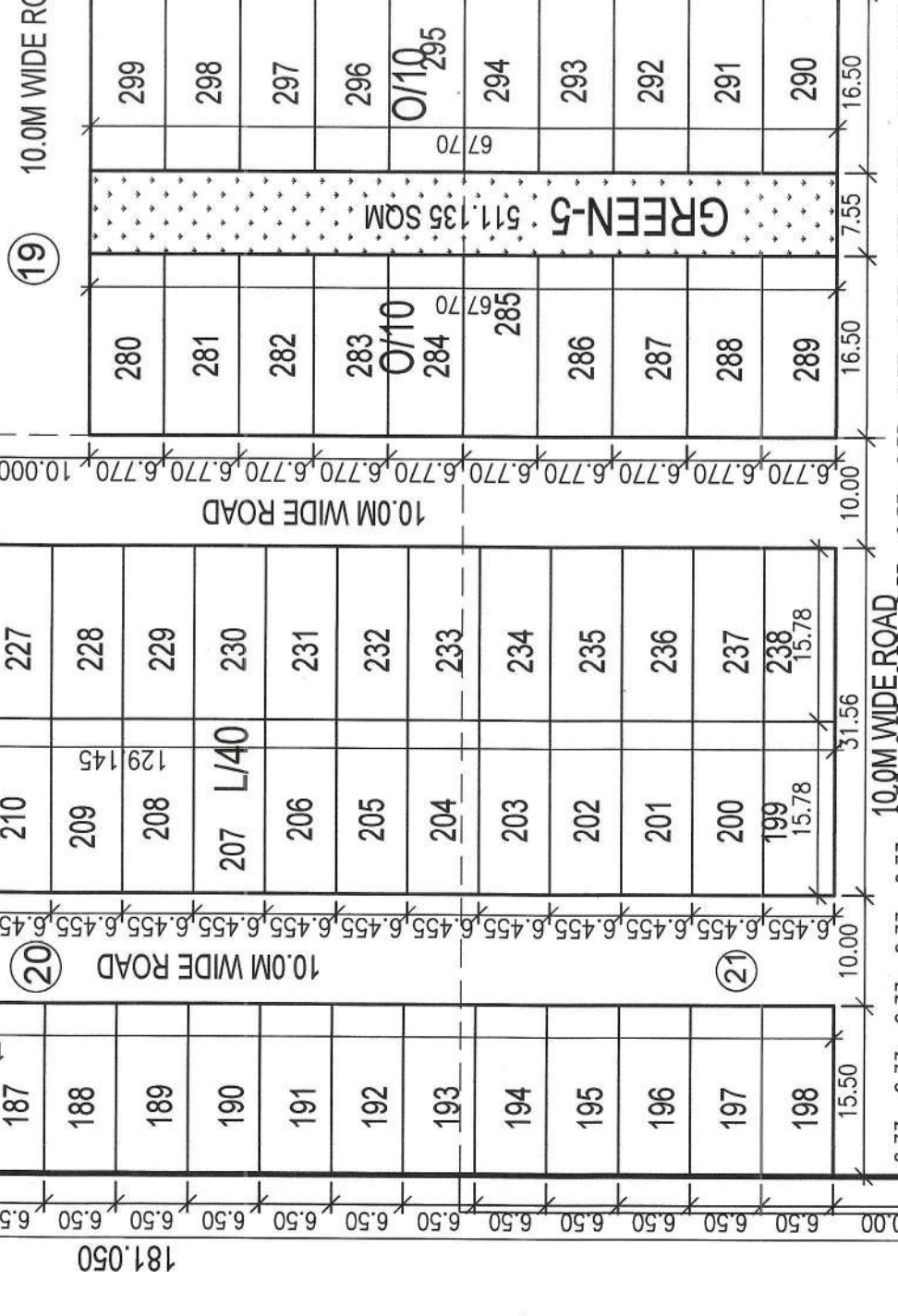
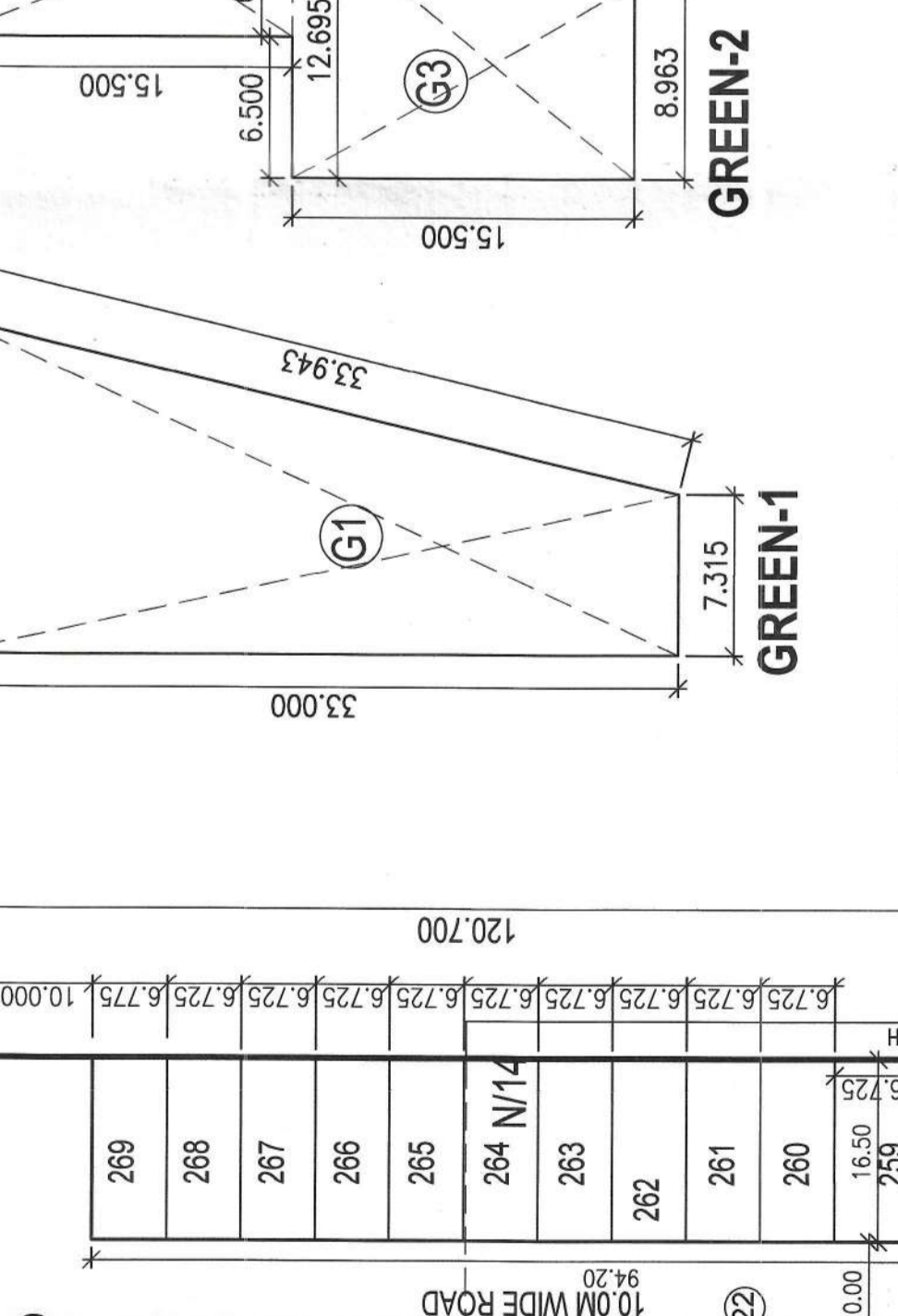
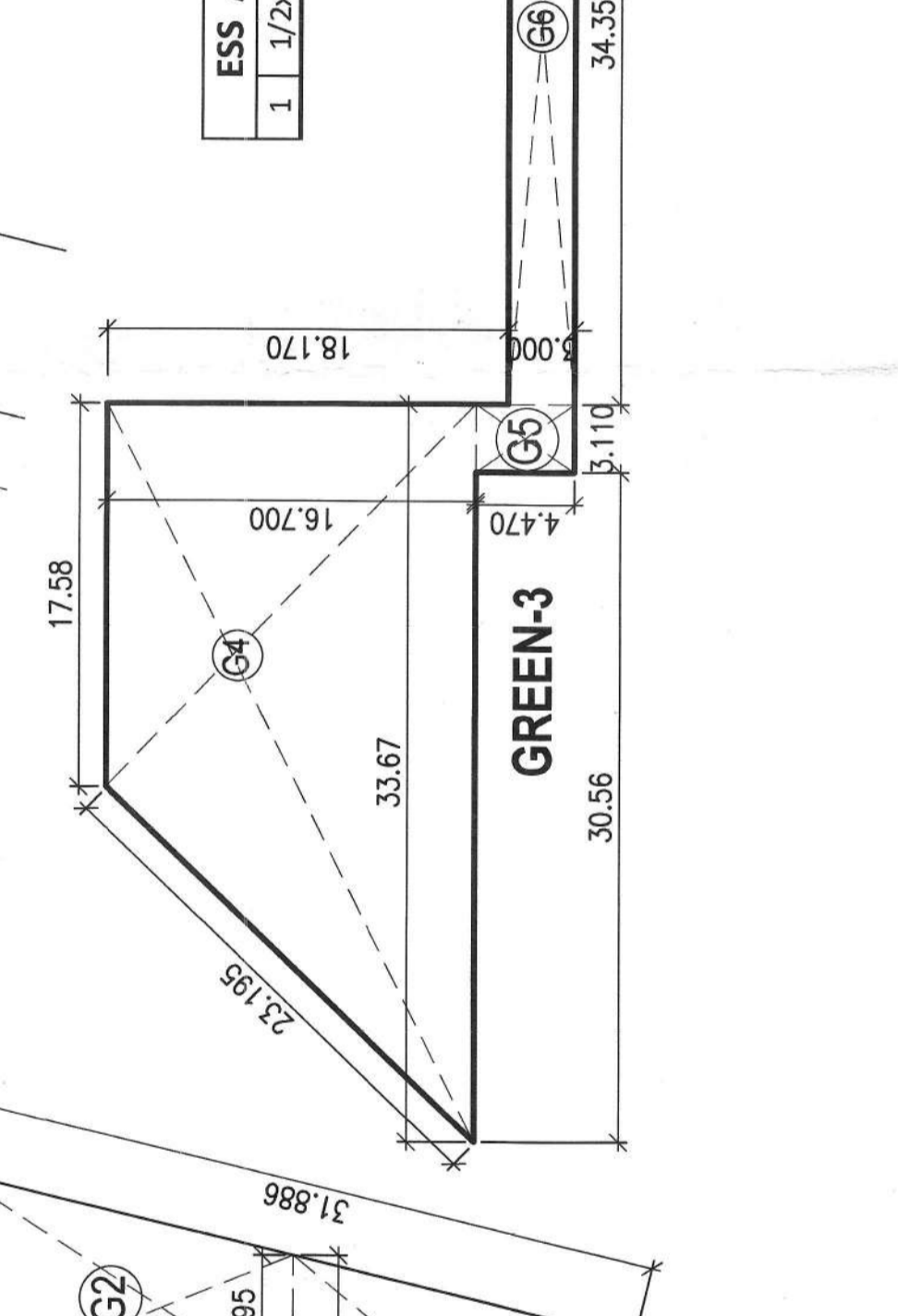
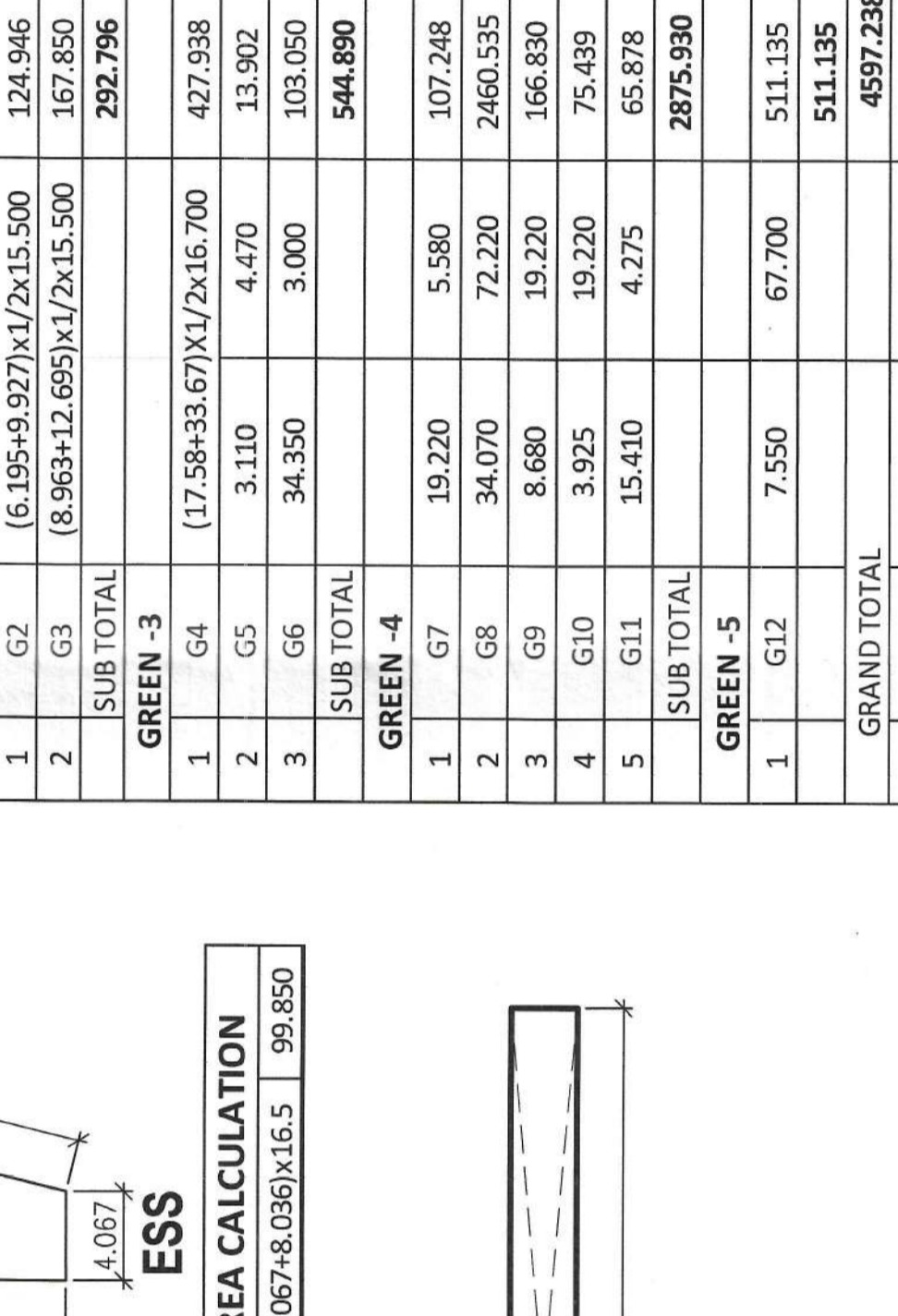
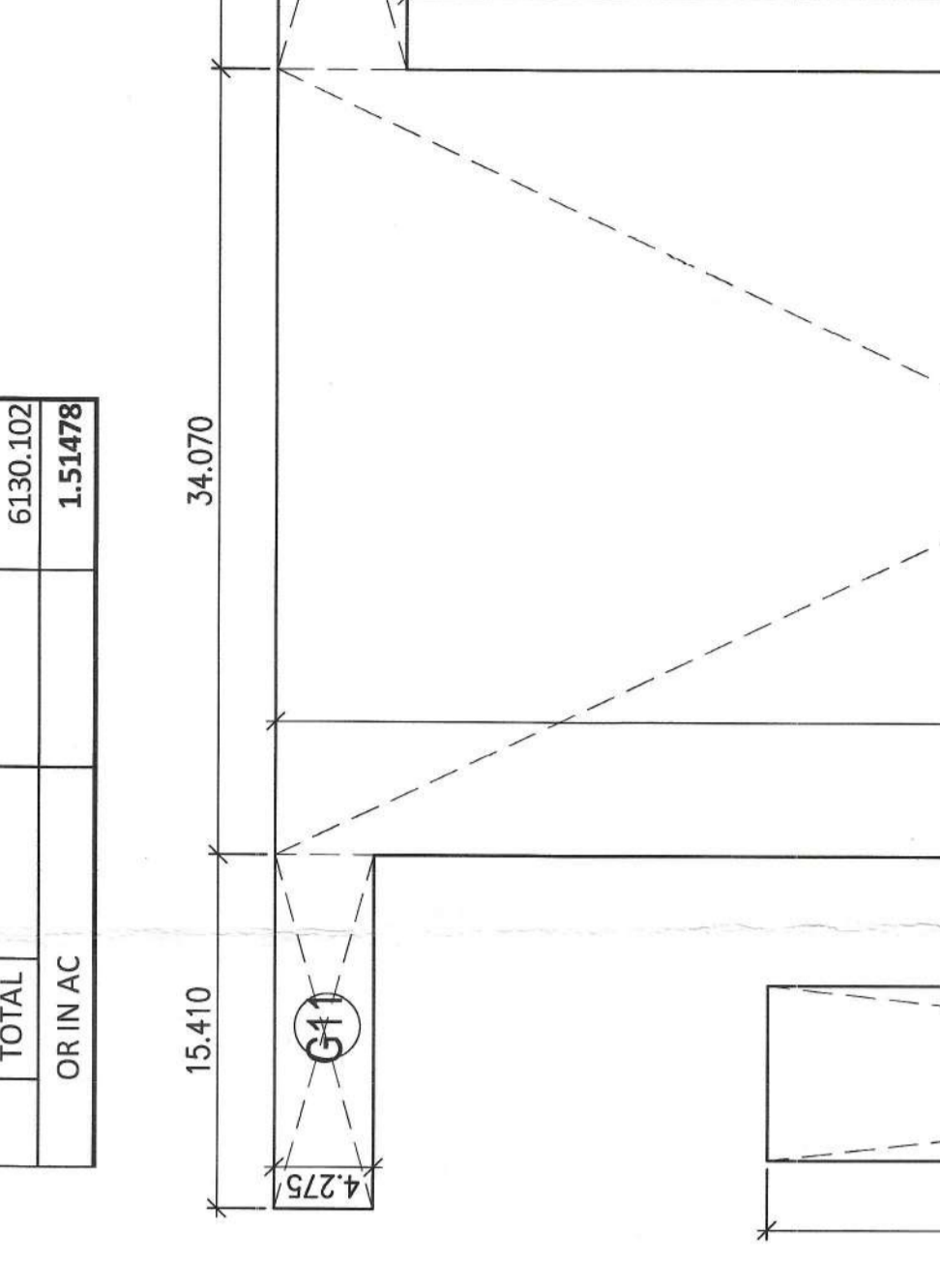
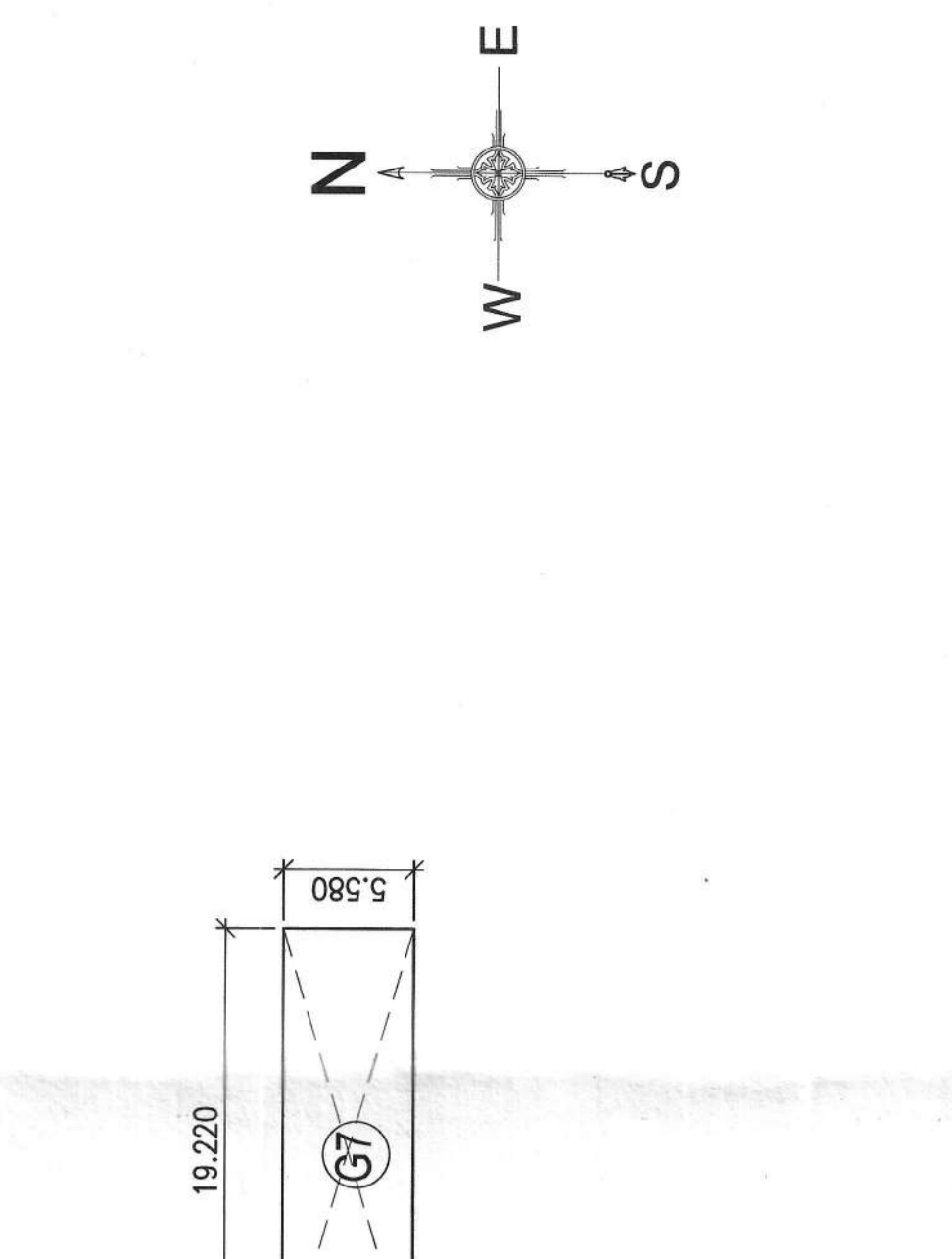
S.NO	CODE	WIDTH IN M	LENGTH IN M	AREA/PILOT IN SQM
1	E1	1.224	4.097	5.015
2	E2	1.224	4.097	5.015
3	E3	1.224	4.097	5.015
TOTAL				15.045
OR IN AC				0.00365



S.NO	CODE	WIDTH IN M	LENGTH IN M	AREA/PILOT IN SQM
1	F1	10.000	10.000	100.000
2	F2	10.000	10.000	100.000
3	F3	10.000	10.000	100.000
4	F4	10.000	10.000	100.000
5	F5	10.000	10.000	100.000
6	F6	10.000	10.000	100.000
7	F7	10.000	10.000	100.000
8	F8	10.000	10.000	100.000
9	F9	10.000	10.000	100.000
10	F10	10.000	10.000	100.000
TOTAL				1000.000
OR IN AC				0.22820



S.NO	CODE	WIDTH IN M	LENGTH IN M	AREA/PILOT IN SQM
1	M1	10.000	10.000	100.000
2	M2	10.000	10.000	100.000
3	M3	10.000	10.000	100.000
4	M4	10.000	10.000	100.000
5	M5	10.000	10.000	100.000
6	M6	10.000	10.000	100.000
7	M7	10.000	10.000	100.000
8	M8	10.000	10.000	100.000
9	M9	10.000	10.000	100.000
10	M10	10.000	10.000	100.000
11	M11	10.000	10.000	100.000
12	M12	10.000	10.000	100.000
13	M13	10.000	10.000	100.000
14	M14	10.000	10.000	100.000
15	M15	10.000	10.000	100.000
16	M16	10.000	10.000	100.000
17	M17	10.000	10.000	100.000
TOTAL				1700.000
OR IN AC				0.38270



PROJECT: REVISED & COMBINED DEMARCATION PLAN OF AFFORDABLE PLOTTED COLONY UNDER DEEN DAYAL JAIN AWAS YOUNA LAND MEASURING 7.0875 ACRE IN ADDITION TO 8.1286 ACRE ALREADY LICENSED AND BEARING LICENSE NO 94 OF 2024 DATED 25.07.2024. I.e. TOTAL 15.14435 ACRE AT SECTOR-10A, KHARKHAUDA, DISTT - SONBET HARYANA TO BE DEVELOPED BY M/S SNPC GLOBAL RESIDENCY LLP.

ARCHITECTS: DAULAT & PUNEET ARCHITECTS LLP, 408, Fourth Floor, Sun City Trade Tower, Sector - 21, Burdram - 122016, DWV ARCHITECTS LLP, E-MAIL: info@dwvarchitects.com, Phone: +91-124-6891474

TITLE: DEMARCATION PLAN

SCALE: 1:750

OWNER/UTH: SNPC GLOBAL RESIDENCY LLP

ARCHITECT'S SIGN:

S.NO	TOTAL SITE AREA	DISCUSSION	AREA IN ACRE	AREA IN SQM
1	15.14435	AREA UNDER 45.0M WIDE ROAD	0.04824	195.217
1A	15.09611	BALANCE SITE AREA	15.09611	61091.693
1C	0.02412	50% BENEFIT OF AREA FALLING UNDER 45M WIDE ROAD NET SITE AREA FOR PLANNING-BALANCE SITE AREA+50% OF AREA UNDER 45.0M WIDE ROAD	0.02412	97.609
1D	15.12023	MAX. PERMISSIBLE AREA UNDER PLOTTING (ON NET SITE AREA)	9.22334	37325.476
2	8.17488	PROPOSED AREA UNDER PLOTTING (ON NET SITE AREA) (OF TOTAL SITE AREA)	8.17488	33082.507
3	1.51444	REQUIRED AREA FOR COMMUNITY FACILITIES (OF TOTAL SITE AREA)	1.51444	6128.691
4	1.51478	PROVIDED AREA FOR COMMUNITY FACILITIES (OF TOTAL SITE AREA)	1.51478	6130.102
5	1.13583	REQUIRED MIN. GREEN AREA (OF TOTAL SITE AREA)	1.13583	4596.518
6	1.13600	PROVIDED MIN. GREEN AREA (OF TOTAL SITE AREA)	1.13600	4597.238
7	0.60481	PERMISSIBLE AREA UNDER COMMERCIAL (OF NET SITE AREA)	0.60481	2447.572
8	0.54025	PROPOSED AREA UNDER COMMERCIAL (ON TOTAL SITE AREA)	0.54025	2186.325
9	3634.64	PERMISSIBLE POPULATION (ON TOTAL SITE AREA)	240-400	6058
10	5382	PROPOSED POPULATION (ON TOTAL SITE AREA)	295X18	5382

S.NO	WIDTH IN M	LENGTH IN M	AREA/PILOT IN SQM	NO OF PLOTS	TOTAL AREA IN SQM
1	16.500	42.158	696.722	1	696.722
2	16.500	107.799	1768.784	1	1768.784
3	16.500	115.500	1886.250	51	96198.750
4	16.500	100.750	1662.375	53	88105.875
5	16.500	102.063	1684.039	10	16840.390
6	16.500	80.541	1328.926	1	1328.926
7	16.500	129.916	2143.614	10	21436.140
8	16.500	110.633	1825.444	35	63890.540
9	16.500	137.519	2259.067	15	33886.005
10	16.500	124.828	2060.672	15	30910.080
11	16.500	108.324	1787.342	13	23235.446
12	16.500	128.535	2120.827	1	2120.827
13	16.500	112.53	1846.822	1	1846.822
14	16.500	113.025	1864.912	1	1864.912
15	16.500	101.702	1668.081	38	63387.018
16	16.500	104.445	1713.345	17	29126.865
17	16.500	110.963	1831.002	13	23803.026
18	16.500	111.788	1844.602	1	1844.602
19	16.500	111.705	1843.427	20	36868.540
20	16.500	117.488	1918.552	29	55638.008
21	16.500	111.705	1843.427	29	53459.383
TOTAL AREA					33082.507
OR IN ACRE					8.17488

	10% AREA OF TOTAL LAND FOR COMMON FACILITIES
	COMMERCIAL AREA
	GREEN AREA

