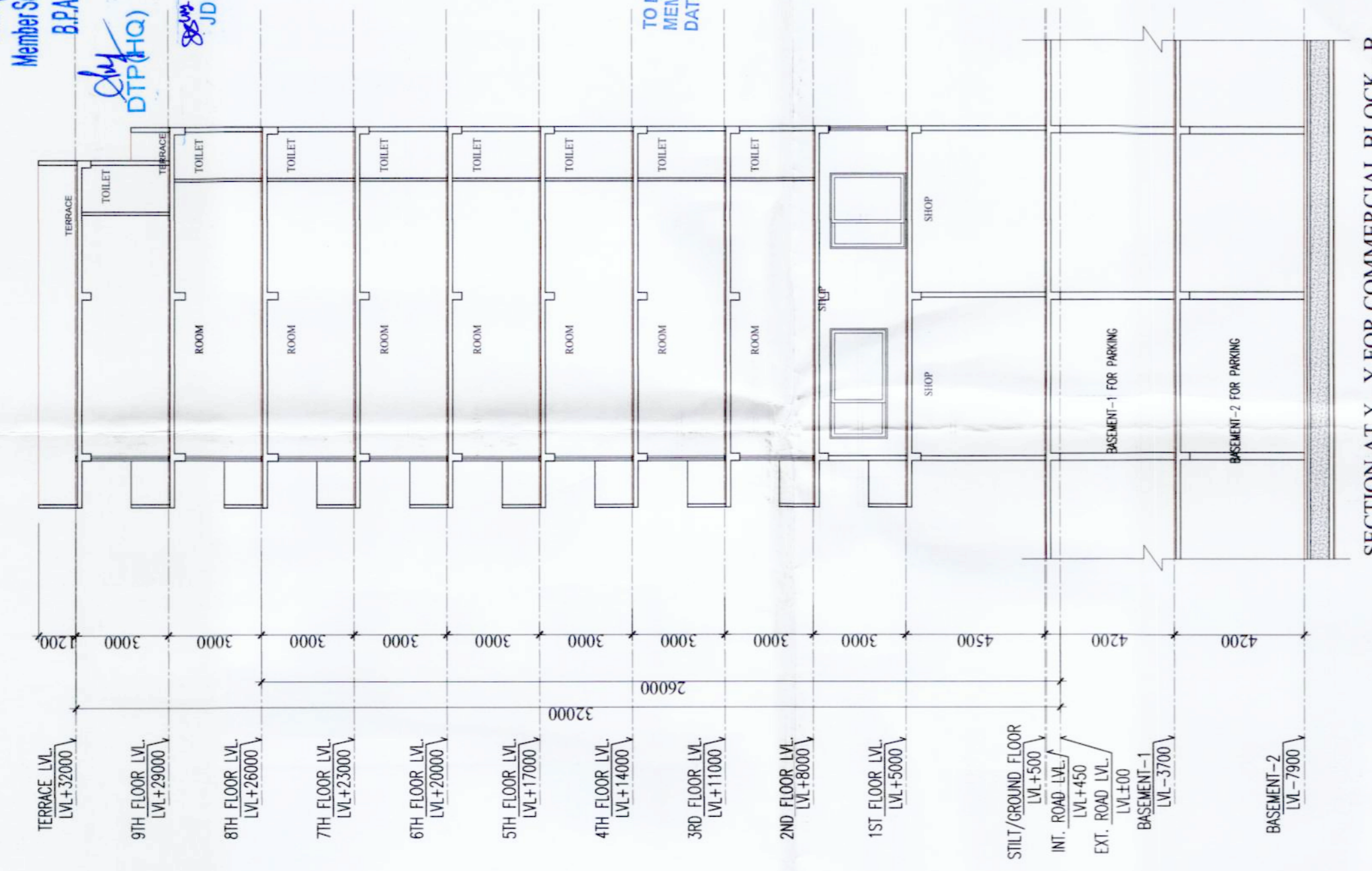


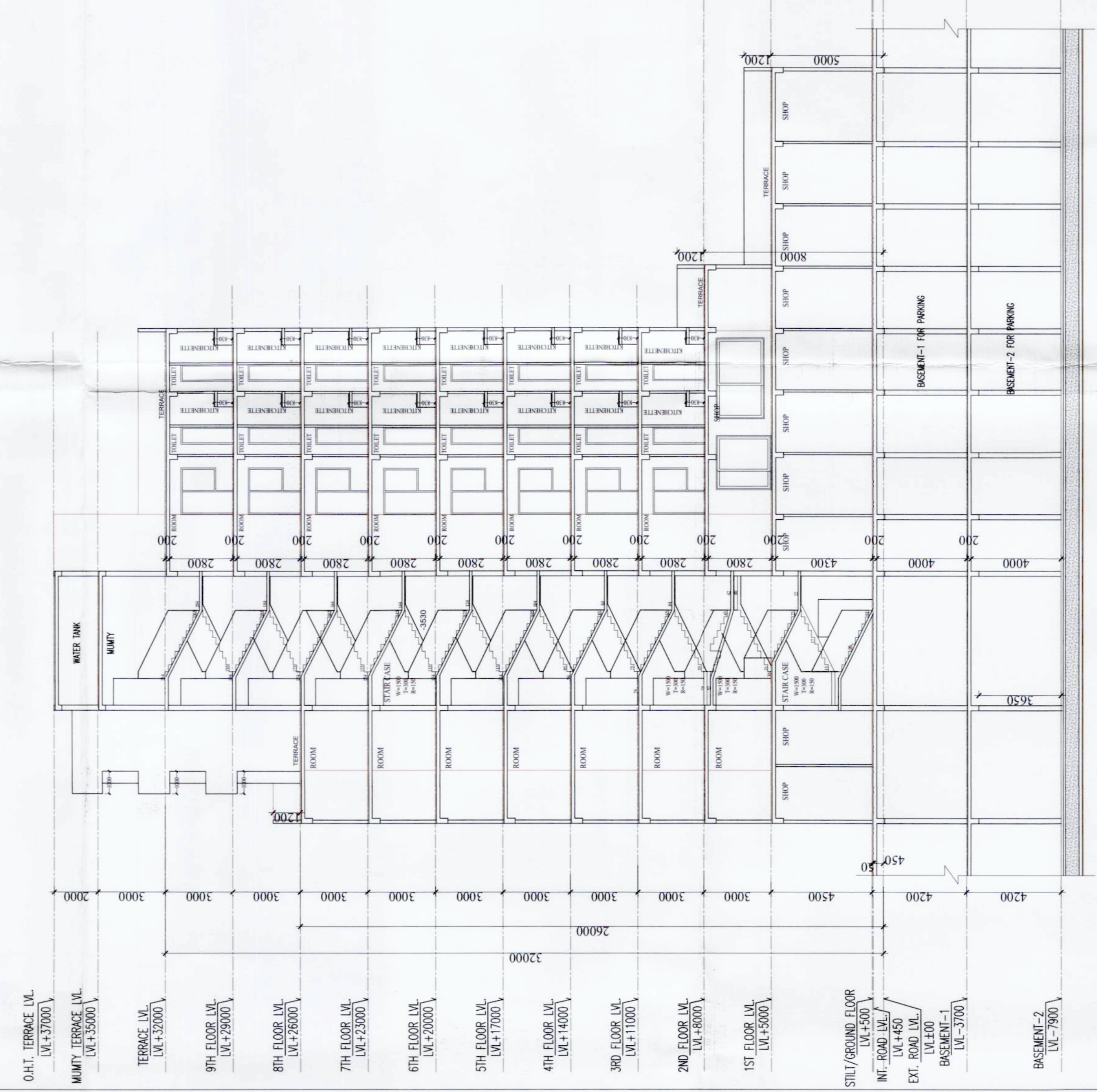
FRONT ELEVATION (SOUTH SIDE) FOR COMMERCIAL BLOCK - B

S.P. (G) Member B.P.A.C.  
 S.P. (H) Member Secretary B.P.A.C.  
 C.P. (HR) Chairman B.P.A.C.  
 J.D. (A.P.)  
 J.D. (H.O.)  
 Ram Avtar Bhatti (J.D. (H.O.))

SANCTIONED  
 TO BE READ WITH THIS OFFICE  
 MEMO NO. :  
 DATED :



SECTION AT X - Y FOR COMMERCIAL BLOCK - B



SECTION AT A - B FOR COMMERCIAL BLOCK - B



REAR ELEVATION (NORTH SIDE) FOR COMMERCIAL BLOCK - B

OWNER : ARTECH ELEGANT HOMES LLP.

PROJECT : PROPOSED BUILDING PLAN OF RETIREMENT HOUSING COLONY OVER AN AREA MEASURING 4.525 ACRES (LICENSE No- 16 OF 2025 DATED 30-01-2025)) IN SECTOR 89A, GURUGRAM MANESAR URBAN COMPLEX BEING DEVELOPED BY ARTECH ELEGANT HOMES LLP.

ARCHITECTURAL CONSULTANT : NIKMAN ARCHITECTS & INTERIOR DESIGNERS  
 e-mail : nikmanarchitects@yahoo.com  
 P.L.O. : 08112044088, 0810081088

TITLE : COMMERCIAL BLOCK-B SECTION & ELEVATION DETAIL

SCALE - 1:150

DRG.NO.- 28

ARCHITECT'S SIGN : ARCHITECT'S SIGN

OWNERS SIGN : OWNERS SIGN

FOR ARTECH ELEGANT HOMES LLP  
 Naveen Chaudhary  
 Partner