

To,
Haryana Real Estate Regulatory Authority
 PWD Guest House, Old Railway Rd,
 Civil Lines,
 Gurugram, Haryana 122001

Date 19.12.2025

Dear Sir,

We, Ashiana Housing Limited, state the following timelines for Ashiana Aaroham Ph 2.

Sr. No.	Description	Start Date	Duration	Finish Date
1	Internal Roads and Pavement s	01-Jan-30	120	01-May-30
2	Water Supply system	01-Oct-29	170	20-Mar-30
3	Storm Water drainage	10-May-29	143	30-Sep-29
4	Sewerage system	10-Dec-28	150	09-May-29
5	Street Lighting	31-Jan-30	75	16-Apr-30
6	Play grounds and Parks	30-Oct-29	270	27-Jul-30
7	Electricity supply system	08-Feb-29	365	08-Feb-30
8	Security and fire- fighting	10-May-29	211	07-Dec-29
9	Renewable energy system	02-Mar-30	60	01-May-30
10	Parking	01-Oct-29	90	30-Dec-29
11	Learning Hub	29-May-28	632	20-Feb-30
12	Rain water harvesting	10-May-29	120	07-Sep-29
13	Others	14-Oct-28	581	18-May-30

Ashiana Housing Limited

Branch Office : Ashiana Amarah, Sector- 93,
 Gurgaon, Haryana- 122505

T: 9205946999; W: ashianahousing.com

Regd. Office : 5F Everest.46/C Chowringhee Road, Kolkata 700071

CIN: L70109WB1986PLC040864; Fax: 011 4265 4200



To,
Haryana Real Estate Regulatory Authority
 PWD Guest House, Old Railway Rd,
 Civil Lines,
 Gurugram, Haryana 122001

Date 19.12.2025

Dear Sir,
 We, Ashiana Housing Limited, state the following timelines for Ashiana Aaroham Phase 2.

Tower 1 (B'C)	Sub structure (Normally 10%- 15%)	Super structure (Normally 35% - 45%)	MEP (Normally 20% - 25%)	Finishing (Normally 20% - 25%)
Jul-Sep 26	2%	0%	0%	0%
Oct-Dec 26	50%	0%	0%	0%
Jan-Mar 27	47%	0%	0%	0%
Apr-Jun 27	1%	25%	0%	0%
Jul-Sep 27	0%	30%	0%	0%
Oct-Dec 27	0%	25%	0%	0%
Jan-Mar-28	0%	10%	5%	0%
Apr-Jun 28	0%	0%	5%	0%
Jul-Sep 28	0%	0%	10%	0%
Oct-Dec 28	0%	0%	10%	10%
Jan-Mar 29	0%	0%	10%	15%
Apr-Jun 29	0%	0%	20%	15%
Jul-Sep 29	0%	0%	20%	20%
Oct-Dec 29	0%	0%	20%	20%
Jan-Mar 30	0%	0%	0%	15%
Apr-Jun 30	0%	0%	0%	5%
Jul-Sep 30	0%	0%	0%	0%
Oct-Dec 30	0%	0%	0%	0%
Jan-Mar 31	0%	0%	0%	0%
Total	100%	100%	100%	100%

Ashiana Housing Limited

Branch Office : Ashiana Amarah, Sector- 93,
 Gurgaon, Haryana- 122505

T: 9205946999; W: ashianahousing.com

Regd. Office : 5F Everest.46/C Chowringhee Road, Kolkata 700071

CIN: L70109WB1986PLC040864; Fax: 011 4265 4200



To,
Haryana Real Estate Regulatory Authority
 PWD Guest House, Old Railway Rd,
 Civil Lines,
 Gurugram, Haryana 122001

Date 19.12.2025

Dear Sir,

We, Ashiana Housing Limited, state the following timelines for Ashiana Aaroham Phase 2.

Tower 2 (AB)	Sub structure (Normally 10%- 15%)	Super structure (Normally 35% - 45%)	MEP (Normally 20% - 25%)	Finishing (Normally 20% - 25%)
Jul-Sep 26	0%	0%	0%	0%
Oct-Dec 26	30%	0%	0%	0%
Jan-Mar 27	65%	0%	0%	0%
Apr-Jun 27	5%	20%	0%	0%
Jul-Sep 27	0%	25%	0%	0%
Oct-Dec 27	0%	30%	0%	0%
Jan-Mar-28	0%	25%	0%	0%
Apr-Jun 28	0%	0%	2%	0%
Jul-Sep 28	0%	0%	10%	0%
Oct-Dec 28	0%	0%	10%	2%
Jan-Mar 29	0%	0%	15%	15%
Apr-Jun 29	0%	0%	15%	20%
Jul-Sep 29	0%	0%	22%	20%
Oct-Dec 29	0%	0%	20%	20%
Jan-Mar 30	0%	0%	6%	17%
Apr-Jun 30	0%	0%	0%	6%
Jul-Sep 30	0%	0%	0%	0%
Oct-Dec 30	0%	0%	0%	0%
Jan-Mar 31	0%	0%	0%	0%
Total	100%	100%	100%	100%

Ashiana Housing Limited

Branch Office : Ashiana Amarah, Sector- 93,
 Gurgaon, Haryana- 122505

T: 9205946999; W: ashianahousing.com

Regd. Office : 5F Everest,46/C Chowringhee Road, Kolkata 700071

CIN: L70109WB1986PLC040864; Fax: 011 4265 4200



To,
Haryana Real Estate Regulatory Authority
 PWD Guest House, Old Railway Rd,
 Civil Lines,
 Gurugram, Haryana 122001

Date 19.12.2025

Dear Sir,
 We, Ashiana Housing Limited, state the following timelines for Ashiana Aaroham Phase 2.

(Learing Hub)	Sub structure (Normally 10%- 15%)	Super structure (Normally 35% - 45%)	MEP (Normally 20% - 25%)	Finishing (Normally 20% - 25%)
Jul-Sep 26	0%	0%	0%	0%
Oct-Dec 26	0%	0%	0%	0%
Jan-Mar 27	0%	0%	0%	0%
Apr-Jun 27	0%	0%	0%	0%
Jul-Sep 27	0%	0%	0%	0%
Oct-Dec 27	0%	0%	0%	0%
Jan-Mar-28	0%	0%	0%	0%
Apr-Jun 28	95%	0%	0%	0%
Jul-Sep 28	5%	20%	0%	0%
Oct-Dec 28	0%	80%	20%	0%
Jan-Mar 29	0%	0%	40%	10%
Apr-Jun 29	0%	0%	40%	25%
Jul-Sep 29	0%	0%	0%	25%
Oct-Dec 29	0%	0%	0%	25%
Jan-Mar 30	0%	0%	0%	15%
Apr-Jun 30	0%	0%	0%	0%
Jul-Sep 30	0%	0%	0%	0%
Oct-Dec 30	0%	0%	0%	0%
Total	100%	100%	100%	100%

Ashiana Housing Limited

Branch Office : Ashiana Amarah, Sector- 93,

Gurgaon, Haryana- 122505

T: 9205946999; W: ashianahousing.com

Regd. Office : 5F Everest.46/C Chowringhee Road, Kolkata 700071

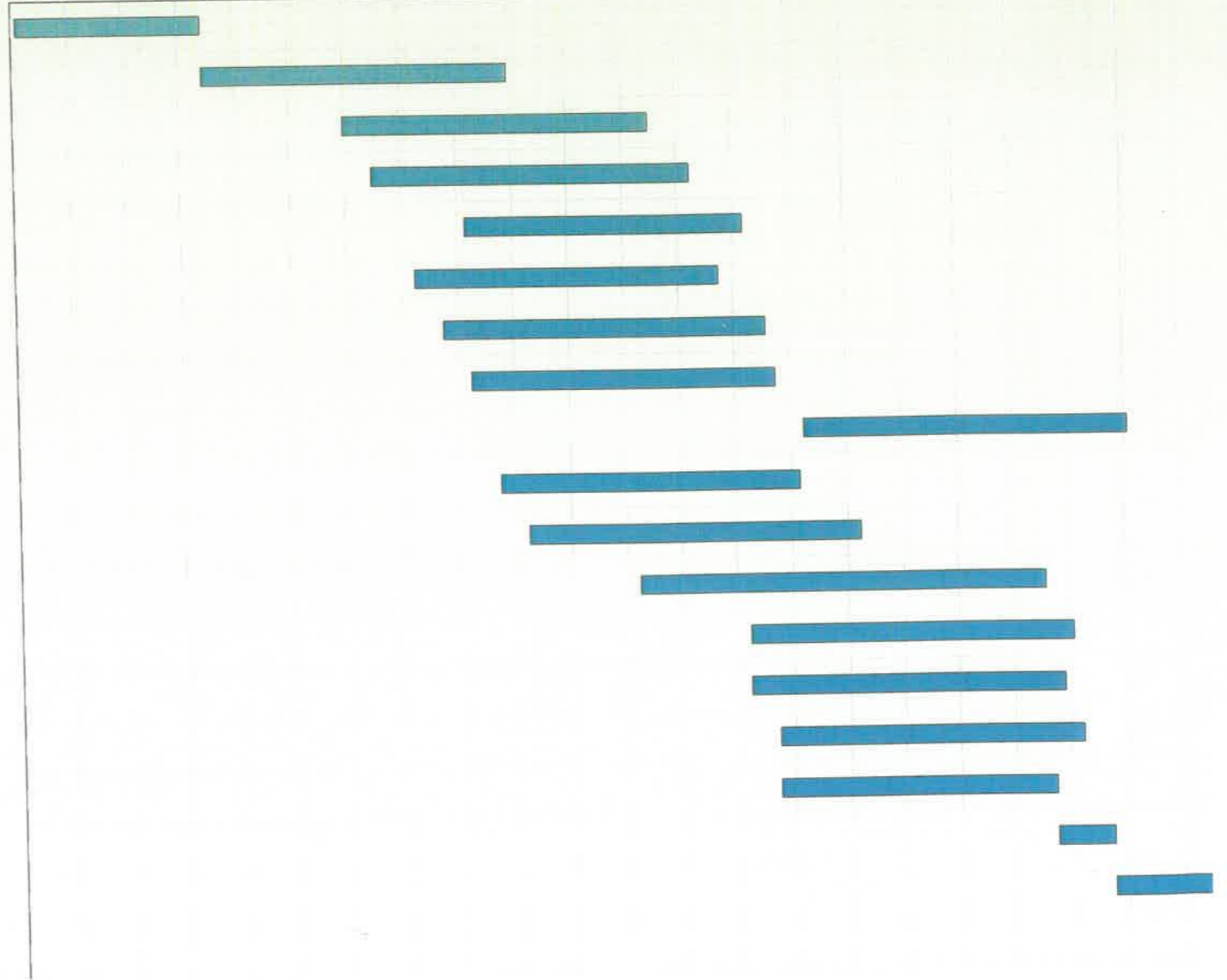
CIN: L70109WB1986PLC040864; Fax: 011 4265 4200



Ashiana Aaroham T1

S.No.	Description	Start Date	Duration	Finish Date
1	Foundation	15-Sep-26	200	3-Apr-27
2	RCC super structure	4-Apr-27	331	29-Feb-28
3	Brick Work	4-Sep-27	330	30-Jul-28
4	Internal Plaster	4-Oct-27	345	13-Sep-28
5	Tiles Work	12-Jan-28	302	9-Nov-28
6	External Plaster	18-Nov-27	330	13-Oct-28
7	POP Work	18-Dec-27	350	2-Dec-28
8	Door Shutter Fixing	17-Jan-28	330	12-Dec-28
9	Aluminium Window	11-Jan-29	350	27-Dec-29
10	Electrical wiring & Fittings and testing	16-Feb-28	325	6-Jan-29
11	Internal Painting	17-Mar-28	360	12-Mar-29
12	CP & Vitreous Fittings	15-Jul-28	440	18-Dec-29
13	External Painting	12-Nov-28	350	28-Oct-29
14	Fire Fighting	12-Nov-28	340	18-Oct-29
15	Lift	12-Dec-28	330	7-Nov-29
16	Solar	12-Dec-28	300	8-Oct-29
17	Other	9-Oct-29	60	8-Dec-29
18	Final finishing and hand over and application for OC	7-Jan-30	131	18-May-30
19	Obtaining completion Certificate & Handing Over	May-30	285	28-Feb-31

Sep/26 Nov/26 Jan/27 Mar/27 May/27 Jul/27 Sep/27 Nov/27 Jan/28 Mar/28 May/28 Jul/28 Sep/28 Nov/28 Jan/29 Mar/29 May/29 Jul/29 Sep/29 Nov/29 Jan/30 Mar/30 May/30 Jul/30 Sep/30 Nov/30

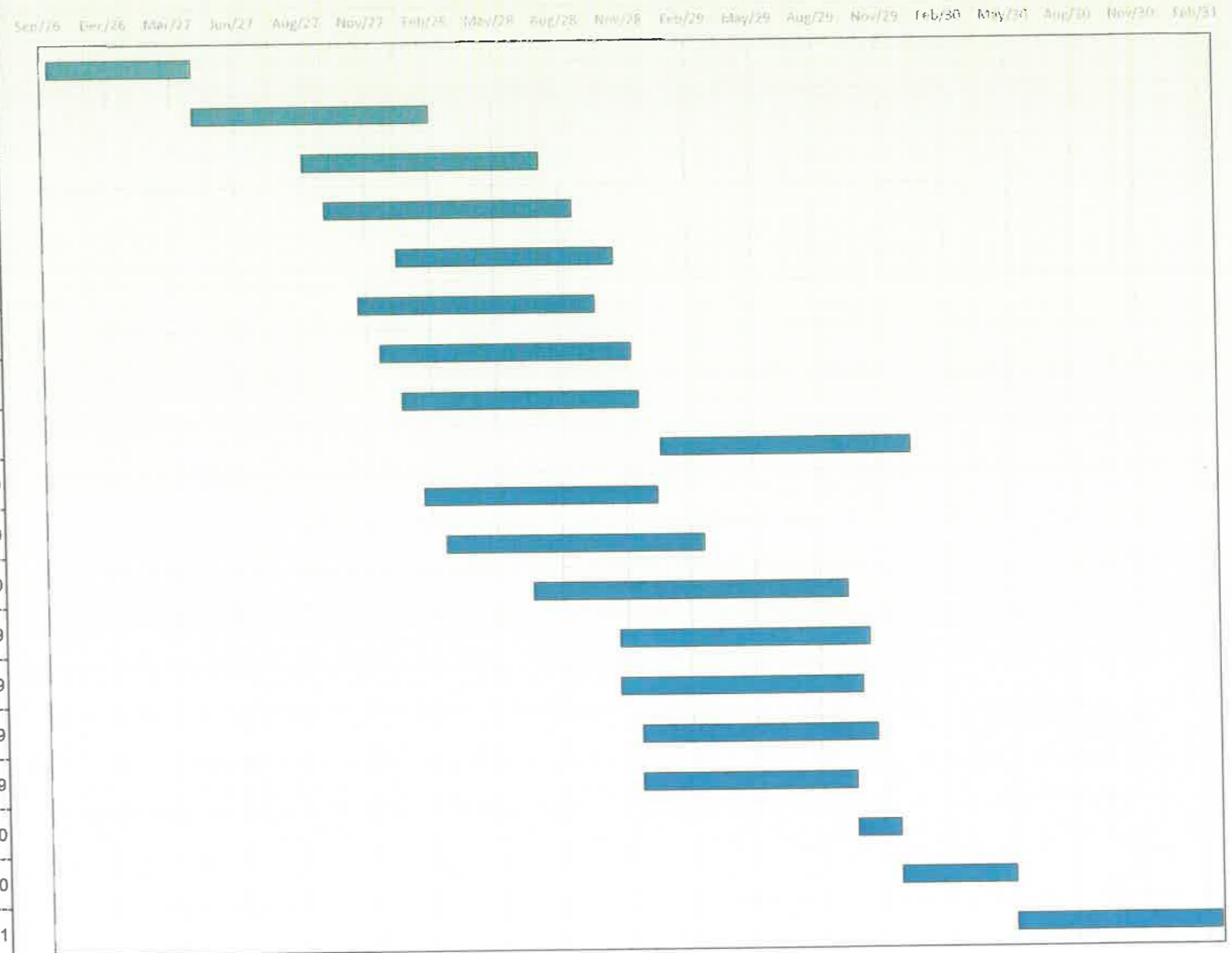


46280 47907



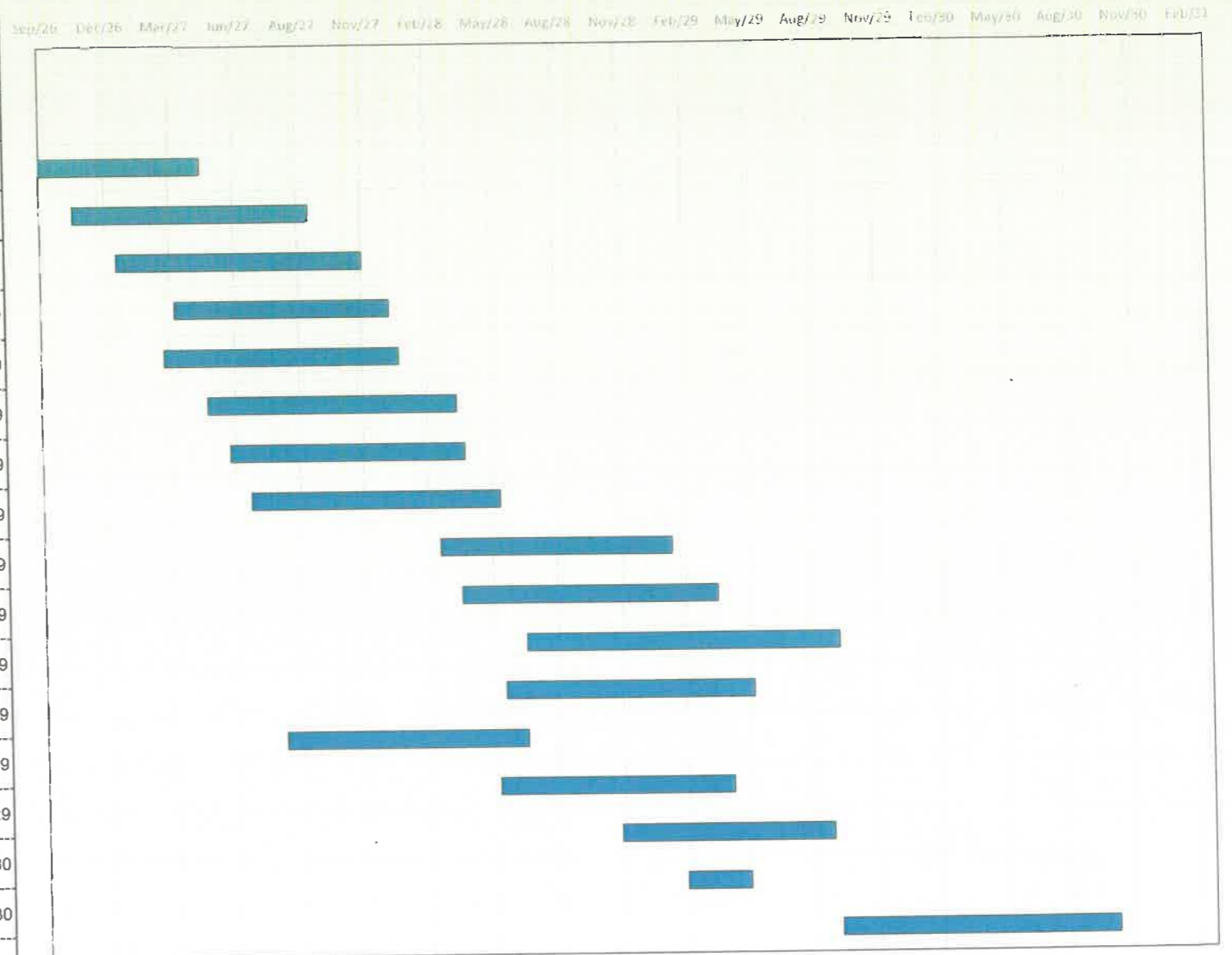
Ashiana Aaroham T2

S.No.	Description	Start Date	Duration	Finish Date
1	Foundation	15-Oct-26	200	3-May-27
2	RCC super structure	4-May-27	331	30-Mar-28
3	Brick Work	4-Oct-27	330	29-Aug-28
4	Internal Plaster	3-Nov-27	345	13-Oct-28
5	Tiles Work	11-Feb-28	302	9-Dec-28
6	External Plaster	18-Dec-27	330	12-Nov-28
7	POP Work	17-Jan-28	350	1-Jan-29
8	Door Shutter Fixing	16-Feb-28	330	11-Jan-29
9	Aluminium Window	10-Feb-29	350	26-Jan-30
10	Electrical wiring & Fittings and testing	17-Mar-28	325	5-Feb-29
11	Internal Painting	16-Apr-28	360	11-Apr-29
12	CP & Vitreous Fittings	14-Aug-28	440	17-Jan-30
13	External Painting	12-Dec-28	350	27-Nov-29
14	Fire Fighting	12-Dec-28	340	17-Nov-29
15	Lift	11-Jan-29	330	7-Dec-29
16	Solar	11-Jan-29	300	7-Nov-29
17	Other	8-Nov-29	60	7-Jan-30
18	Final finishing and hand over and application for OC	6-Feb-30	101	18-May-30
19	Obtaining completion Certificate & Handing Over	May-30	285	28-Feb-31



Ashiana Aaroham Nursery School

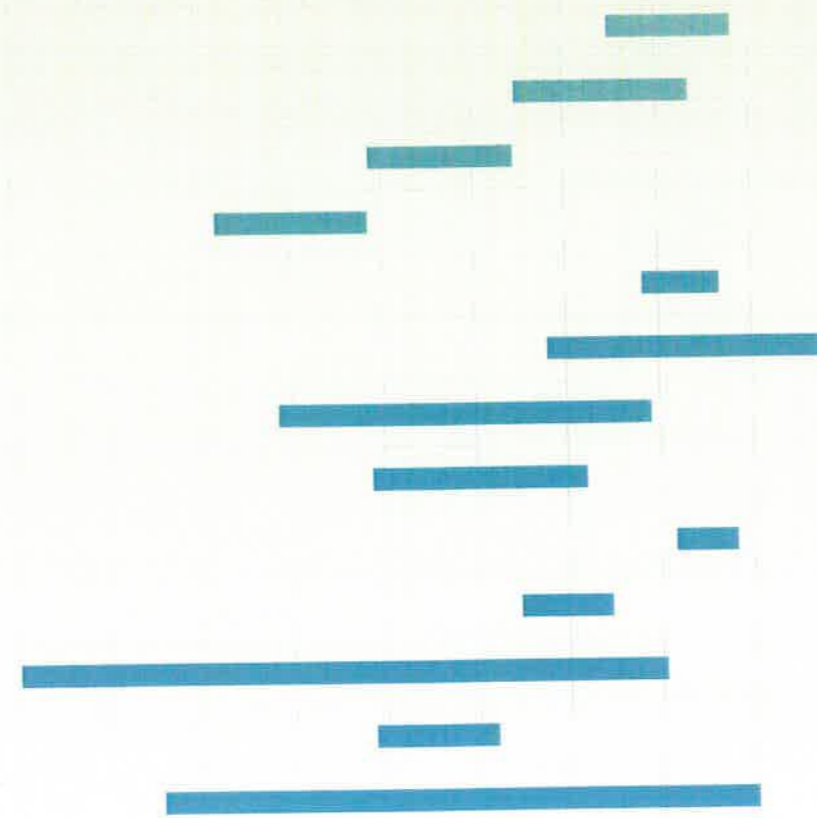
S.No.	Description	Start Date	Duration	Finish Date
1	Foundation	29-May-28	100	6-Sep-28
2	RCC super structure	7-Sep-28	90	6-Dec-28
3	Brick Work	6-Oct-28	50	25-Nov-28
4	Internal Plaster	2-Dec-28	30	1-Jan-29
5	Tiles Work	19-Dec-28	30	18-Jan-29
6	External Plaster	11-Jan-29	60	12-Mar-29
7	POP Work	12-Dec-28	80	2-Mar-29
8	Door Shutter Fixing	12-Mar-29	30	11-Apr-29
9	Aluminium Window	12-Mar-29	30	11-Apr-29
10	Electrical wiring & Fittings and testing	21-Apr-29	30	21-May-29
11	Internal Painting	12-Apr-29	30	12-May-29
12	CP & Vitreous Fittings	19-May-29	30	18-Jun-29
13	External Painting	5-Mar-29	30	4-Apr-29
14	Fire Fighting	15-Mar-29	30	14-Apr-29
15	Lift	14-Apr-29	90	13-Jul-29
16	Other	14-Jul-29	60	12-Sep-29
17	Final finishing and hand over and application for OC	12-Oct-29	131	20-Feb-30
18	Obtaining completion Certificate & Handing Over	Feb-30	285	3-Dec-30



Ashiana Aaroham PH-2

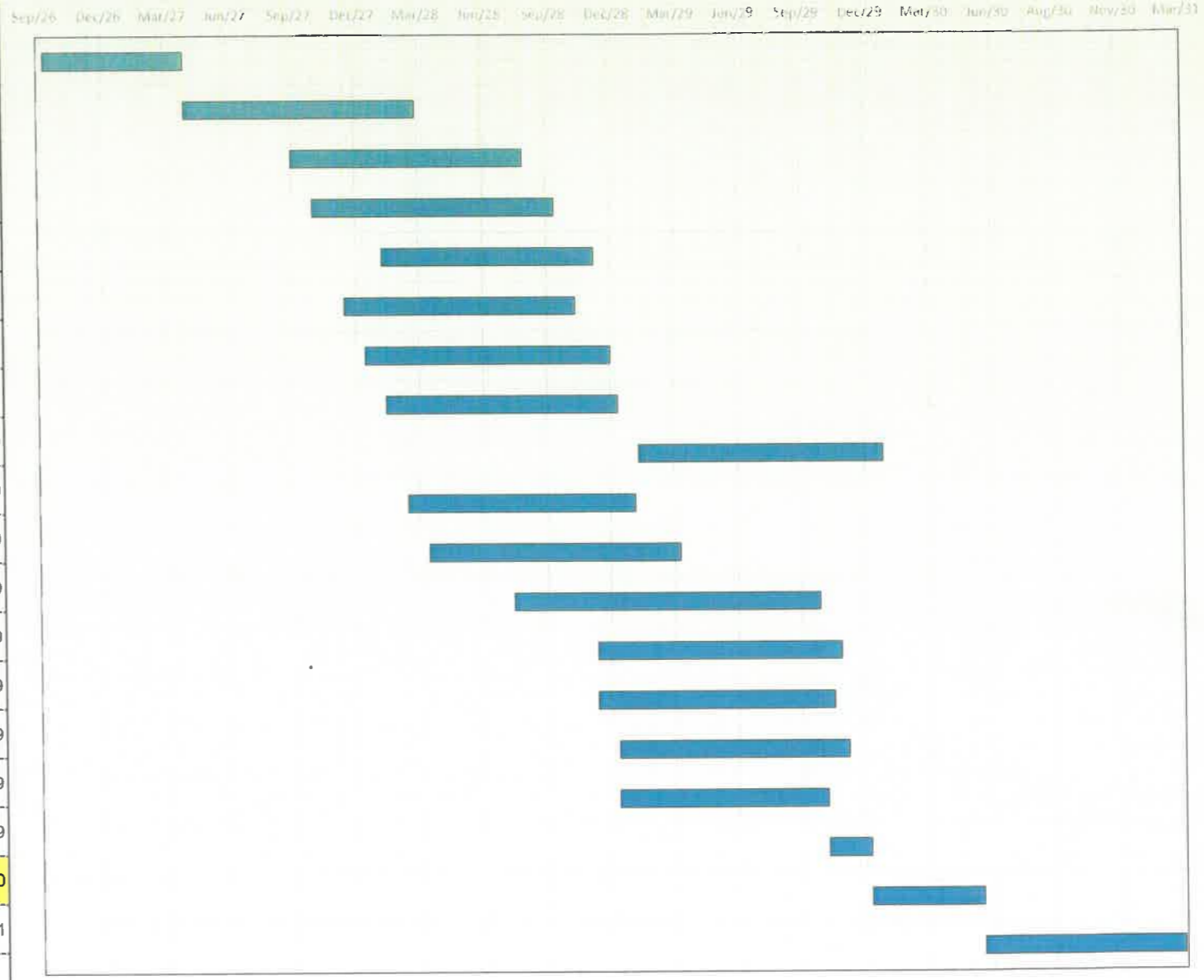
Sr.No.	Description	Start Date	Duration	finish Date
1	Internal Roads and Pavement s	1-Jan-30	120	1-May-30
2	Water Supply system	1-Oct-29	170	20-Mar-30
3	Storm Water drainage	10-May-29	143	30-Sep-29
4	Sewerage system	10-Dec-28	150	9-May-29
5	Street Lighting	31-Jan-30	75	16-Apr-30
6	Play grounds and Parks	30-Oct-29	270	27-Jul-30
7	Electricity supply system	8-Feb-29	365	8-Feb-30
8	Security and fire- fighting	10-May-29	211	7-Dec-29
9	Renewable energy system	2-Mar-30	60	1-May-30
10	Parking	1-Oct-29	90	30-Dec-29
11	Learning Hub	29-May-28	632	20-Feb-30
12	Rain water harvesting	10-May-29	120	7-Sep-29
13	Others	14-Oct-28	581	18-May-30

Sep/26 Dec/26 Mar/27 Jun/27 Aug/27 Nov/27 Feb/28 May/28 Aug/28 Nov/28 Feb/29 May/29 Aug/29 Nov/29 Feb/30 May/30 Aug/30 Nov/30 Feb/31



Ashiana Aaroham Ph 2

S.No.	Description	Start Date	Duration	Finish Date
1	Foundation	15-Sep-26	200	3-Apr-27
2	RCC super structure	4-Apr-27	331	29-Feb-28
3	Brick Work	4-Sep-27	330	30-Jul-28
4	Internal Plaster	4-Oct-27	345	13-Sep-28
5	Tiles Work	12-Jan-28	302	9-Nov-28
6	External Plaster	18-Nov-27	330	13-Oct-28
7	POP Work	18-Dec-27	350	2-Dec-28
8	Door Shutter Fixing	17-Jan-28	330	12-Dec-28
9	Aluminium Window	11-Jan-29	350	27-Dec-29
10	Electrical wiring & Fittings and testing	16-Feb-28	325	6-Jan-29
11	Internal Painting	17-Mar-28	360	12-Mar-29
12	CP & Vitreous Fittings	15-Jul-28	440	18-Dec-29
13	External Painting	12-Nov-28	350	28-Oct-29
14	Fire Fighting	12-Nov-28	340	18-Oct-29
15	Lift	12-Dec-28	330	7-Nov-29
16	Solar	12-Dec-28	300	8-Oct-29
17	Other	9-Oct-29	60	8-Dec-29
18	Final finishing and hand over and application for OC	9-Dec-29	160	18-May-30
19	Obtaining completion Certificate & Handing Over	19-May-30	285	28-Feb-31



Development work																					
Sr No	ACTIVITY WISE % AGE	Jul-Sep 26	Oct-Dec 26	Jan-Mar 27	Apr-Jun 27	Jul-Sep 27	Oct-Dec 27	Jan-Mar 28	Apr-Jun 28	Jul-Sep 28	Oct-Dec 28	Jan-Mar 29	Apr-Jun 29	Jul-Sep 29	Oct-Dec 29	Jan-Mar 30	Apr-Jun 30	Jul-Sep 30	Oct-Dec 30	Jan-Mar 31	Total
1	Internal Roads and Pavements	0%	0%	0%	0%	0%	0%	0%	0%	0%	0%	0%	0%	0%	0%	70%	30%	0%	0%	0%	100%
2	Water Supply system	0%	0%	0%	0%	0%	0%	0%	0%	0%	0%	0%	0%	0%	0%	0%	0%	0%	0%	0%	100%
3	Storm Water drainage	0%	0%	0%	0%	0%	0%	0%	0%	0%	0%	0%	35%	65%	0%	0%	0%	0%	0%	0%	100%
4	Sewerage system	0%	0%	0%	0%	0%	0%	0%	0%	0%	10%	70%	20%	0%	0%	0%	0%	0%	0%	0%	100%
5	Street Lighting	0%	0%	0%	0%	0%	0%	0%	0%	0%	0%	0%	0%	0%	0%	70%	30%	0%	0%	0%	100%
6	Play grounds and Parks	0%	0%	0%	0%	0%	0%	0%	0%	0%	0%	0%	0%	0%	20%	30%	30%	20%	0%	0%	100%
7	Electricity supply system	0%	0%	0%	0%	0%	0%	0%	0%	0%	0%	5%	10%	10%	40%	35%	0%	0%	0%	0%	100%
8	Security and Fire- Fighting	0%	0%	0%	0%	0%	0%	0%	0%	0%	0%	0%	20%	60%	20%	0%	0%	0%	0%	0%	100%
9	Renewable energy system	0%	0%	0%	0%	0%	0%	0%	0%	0%	0%	0%	0%	0%	100%	0%	0%	0%	0%	0%	100%
10	Parking	0%	0%	0%	0%	0%	0%	0%	0%	0%	0%	0%	0%	0%	0%	5%	0%	0%	0%	0%	100%
11	Nursury School	0%	0%	0%	0%	0%	0%	0%	5%	20%	15%	15%	20%	10%	10%	5%	0%	0%	0%	0%	100%
12	Rain water harvesting	0%	0%	0%	0%	0%	0%	0%	0%	0%	0%	0%	50%	50%	0%	0%	0%	0%	0%	0%	100%
13	Others	0%	0%	0%	0%	0%	0%	0%	0%	0%	10%	10%	15%	15%	15%	15%	20%	0%	0%	0%	100%

Development work																					
Tower 1	ACTIVITY WISE % AGE	Jul-Sep 26	Oct-Dec 26	Jan-Mar 27	Apr-Jun 27	Jul-Sep 27	Oct-Dec 27	Jan-Mar 28	Apr-Jun 28	Jul-Sep 28	Oct-Dec 28	Jan-Mar 29	Apr-Jun 29	Jul-Sep 29	Oct-Dec 29	Jan-Mar 30	Apr-Jun 30	Jul-Sep 30	Oct-Dec 30	Jan-Mar 31	Total
1	Sub structure (Normally 10%-15%)	0%	0%	0%	0%	0%	0%	0%	0%	0%	0%	0%	0%	0%	0%	0%	0%	0%	0%	0%	0%
2	Super structure (Normally 35% - 45%)	0%	0%	0%	0%	0%	0%	0%	0%	0%	0%	0%	0%	0%	0%	0%	0%	0%	0%	0%	0%
3	MEP (Normally 20% - 25%)	0%	0%	0%	0%	0%	0%	0%	0%	0%	0%	10%	15%	15%	20%	20%	20%	0%	0%	0%	100%
4	Finishing (Normally 20% - 25%)	0%	0%	0%	0%	0%	0%	0%	0%	0%	0%	5%	10%	15%	20%	20%	20%	10%	0%	0%	100%

Development work																					
Tower 2	ACTIVITY WISE % AGE	Jul-Sep 26	Oct-Dec 26	Jan-Mar 27	Apr-Jun 27	Jul-Sep 27	Oct-Dec 27	Jan-Mar 28	Apr-Jun 28	Jul-Sep 28	Oct-Dec 28	Jan-Mar 29	Apr-Jun 29	Jul-Sep 29	Oct-Dec 29	Jan-Mar 30	Apr-Jun 30	Jul-Sep 30	Oct-Dec 30	Jan-Mar 31	Total
1	Sub structure (Normally 10%-15%)	0%	0%	0%	0%	0%	0%	0%	0%	0%	0%	0%	0%	0%	0%	0%	0%	0%	0%	0%	0%
2	Super structure (Normally 35% - 45%)	0%	0%	0%	0%	0%	0%	0%	0%	0%	0%	0%	0%	0%	0%	0%	0%	0%	0%	0%	0%
3	MEP (Normally 20% - 25%)	0%	0%	0%	0%	0%	0%	0%	0%	0%	0%	10%	15%	15%	20%	20%	20%	0%	0%	0%	100%
4	Finishing (Normally 20% - 25%)	0%	0%	0%	0%	0%	0%	0%	0%	0%	0%	5%	10%	15%	20%	20%	20%	10%	0%	0%	100%

Development work																					
Learninh Hub	ACTIVITY WISE % AGE	Jul-Sep 26	Oct-Dec 26	Jan-Mar 27	Apr-Jun 27	Jul-Sep 27	Oct-Dec 27	Jan-Mar 28	Apr-Jun 28	Jul-Sep 28	Oct-Dec 28	Jan-Mar 29	Apr-Jun 29	Jul-Sep 29	Oct-Dec 29	Jan-Mar 30	Apr-Jun 30	Jul-Sep 30	Oct-Dec 30	Jan-Mar 31	Total
1	Sub structure (Normally 10%-15%)	0%	0%	0%	0%	0%	0%	0%	95%	5%	0%	0%	0%	0%	0%	0%	0%	0%	0%	0%	100%
2	Super structure (Normally 35% - 45%)	0%	0%	0%	0%	0%	0%	0%	0%	20%	80%	0%	0%	0%	0%	0%	0%	0%	0%	0%	100%
3	MEP (Normally 20% - 25%)	0%	0%	0%	0%	0%	0%	0%	0%	0%	20%	40%	40%	0%	0%	0%	0%	0%	0%	0%	100%
4	Finishing (Normally 20% - 25%)	0%	0%	0%	0%	0%	0%	0%	0%	0%	0%	10%	25%	25%	25%	15%	0%	0%	0%	0%	100%