

3BHK TYPE-1P CARPET AREA

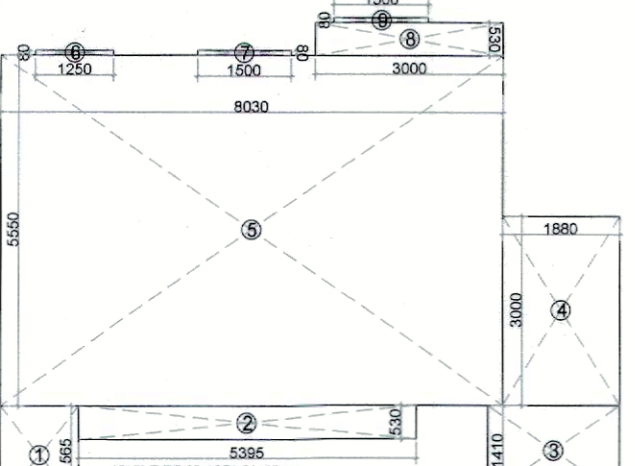
- 3.160 X 1.050 = 3.32
- 3.080 X 3.150 = 9.70
- 3.250 X 0.080 = 0.26
- 1.500 X 0.080 = 0.12
- 8.035 X 3.350 = 26.92
- 6.540 X 3.000 = 19.62
- 1.500 X 0.080 = 0.12

TOTAL CARPET AREA = 59.90

BALCONY/TERRACE AREA

- 19.770 X 1.270 = 25.11
- 1.580 X 3.350 = 5.29

TOTAL AREA = 91.30



3BHK TYPE-2P CARPET AREA

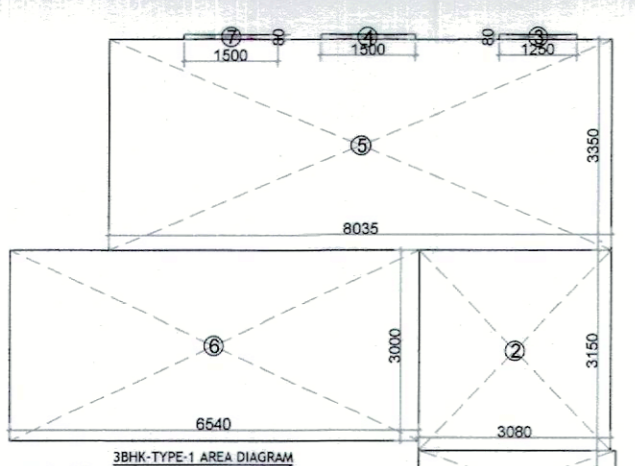
- 1.250 X 1.300 = 1.63
- 3.390 X 0.530 = 1.80
- 3.110 X 1.430 = 4.45
- 4.880 X 3.000 = 14.64
- 8.030 X 5.500 = 44.17
- 6.250 X 0.080 = 0.50
- 1.500 X 0.080 = 0.12
- 8.000 X 0.530 = 4.24
- 1.500 X 0.080 = 0.12

TOTAL CARPET AREA = 76.63

BALCONY/TERRACE AREA

- 11.700 X 1.410 = 16.50
- 3.105 X 1.300 = 4.04
- 1.825 X 3.350 = 6.10

TOTAL AREA = 97.17



3BHK TYPE-1 CARPET AREA

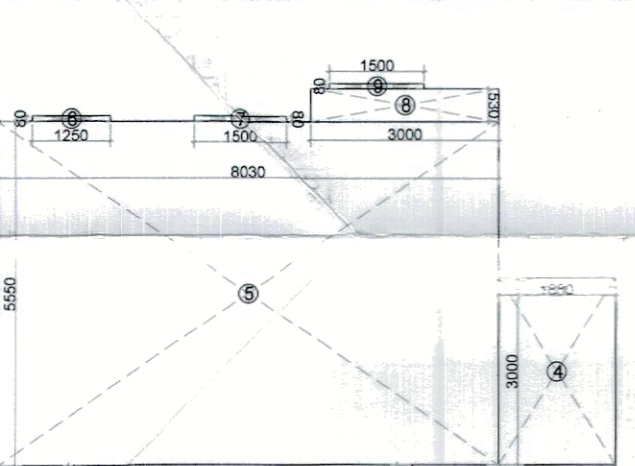
- 3.160 X 1.050 = 3.32
- 3.080 X 3.150 = 9.70
- 3.250 X 0.080 = 0.26
- 1.500 X 0.080 = 0.12
- 8.035 X 3.350 = 26.92
- 6.540 X 3.000 = 19.62
- 1.500 X 0.080 = 0.12

TOTAL CARPET AREA = 59.90

BALCONY/TERRACE AREA

- 16.275 X 1.350 = 22.07
- 1.580 X 1.150 = 1.82

TOTAL AREA = 83.79



3BHK TYPE-2 CARPET AREA

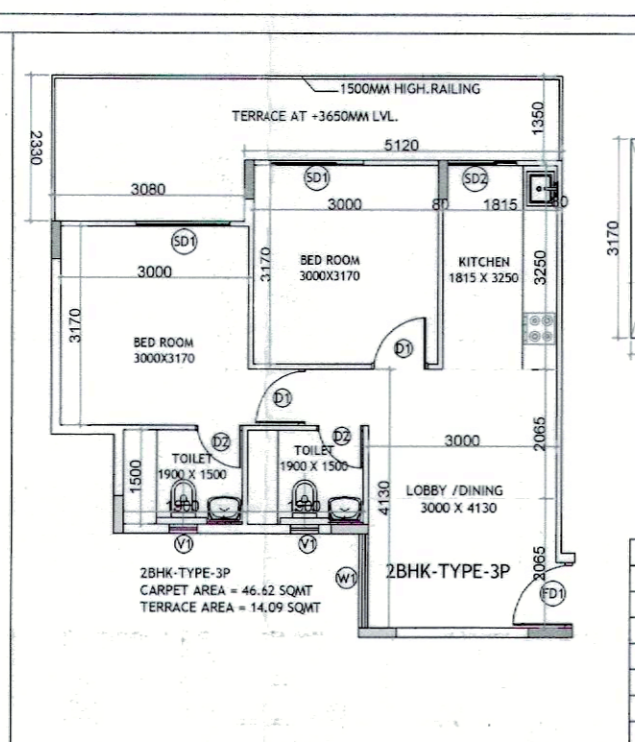
- 1.250 X 1.300 = 1.63
- 3.390 X 0.530 = 1.80
- 3.110 X 1.430 = 4.45
- 4.880 X 3.000 = 14.64
- 8.030 X 5.500 = 44.17
- 6.250 X 0.080 = 0.50
- 1.500 X 0.080 = 0.12
- 8.000 X 0.530 = 4.24
- 1.500 X 0.080 = 0.12

TOTAL CARPET AREA = 76.63

BALCONY/TERRACE AREA

- 11.700 X 1.410 = 16.50
- 3.105 X 1.300 = 4.04
- 1.825 X 3.350 = 6.10

TOTAL AREA = 97.17



2BHK TYPE-3P CARPET AREA

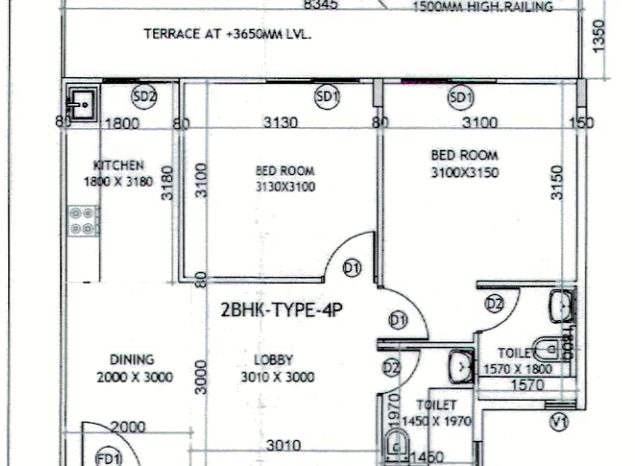
- 2.300 X 1.050 = 2.42
- 3.000 X 1.650 = 4.95
- 6.960 X 4.750 = 33.06
- 4.890 X 0.980 = 4.79
- 1.500 X 0.080 = 0.12
- 6.500 X 0.080 = 0.52
- 1.015 X 3.170 = 3.22
- 1.500 X 0.080 = 0.12

TOTAL CARPET AREA = 47.63

BALCONY/TERRACE AREA

- 5.120 X 1.350 = 6.91
- 2.080 X 2.300 = 4.78

TOTAL AREA = 57.14



2BHK TYPE-4P CARPET AREA

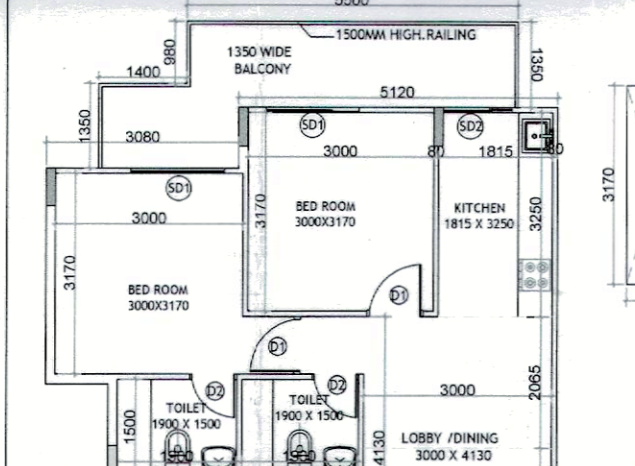
- 1.050 X 0.150 = 0.16
- 6.540 X 6.175 = 40.38
- 1.650 X 5.030 = 8.30
- 1.500 X 0.080 = 0.12
- 1.650 X 5.030 = 8.30
- 6.540 X 6.180 = 40.42
- 6.150 X 0.150 = 0.92

TOTAL CARPET AREA = 49.18

BALCONY/TERRACE AREA

- 8.345 X 1.350 = 11.27

TOTAL AREA = 60.45



2BHK TYPE-3 CARPET AREA

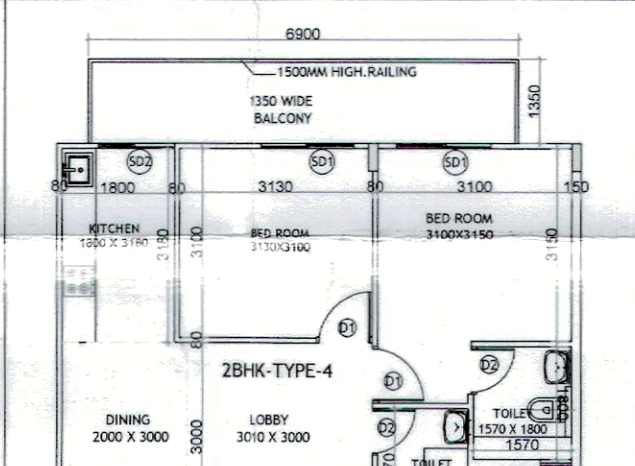
- 2.300 X 1.050 = 2.42
- 3.000 X 1.650 = 4.95
- 6.960 X 4.750 = 33.06
- 4.890 X 0.980 = 4.79
- 1.500 X 0.080 = 0.12
- 6.500 X 0.080 = 0.52
- 1.015 X 3.170 = 3.22
- 1.500 X 0.080 = 0.12

TOTAL CARPET AREA = 47.63

BALCONY/TERRACE AREA

- 5.120 X 1.350 = 6.91
- 2.080 X 2.300 = 4.78

TOTAL AREA = 57.14



2BHK TYPE-4 CARPET AREA

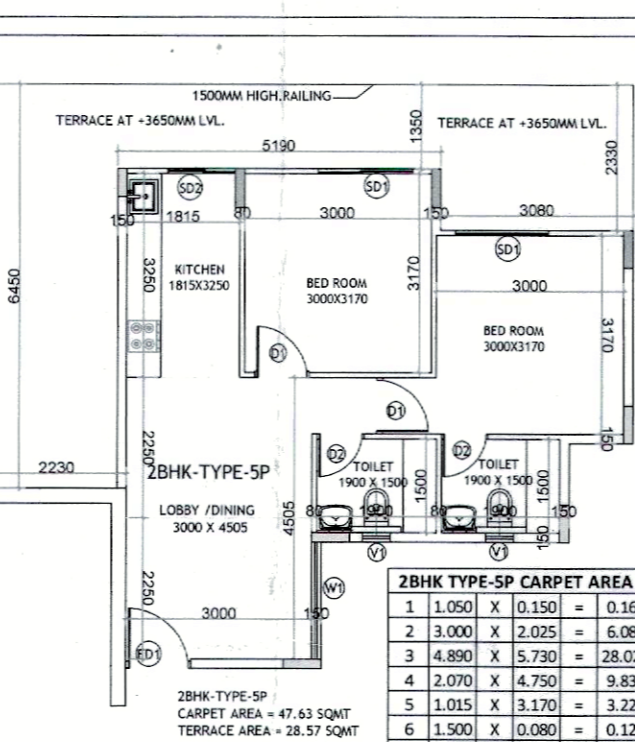
- 1.050 X 0.150 = 0.16
- 6.540 X 6.175 = 40.38
- 1.650 X 5.030 = 8.30
- 1.500 X 0.080 = 0.12
- 1.650 X 5.030 = 8.30
- 6.540 X 6.180 = 40.42
- 6.150 X 0.150 = 0.92

TOTAL CARPET AREA = 49.18

BALCONY/TERRACE AREA

- 6.900 X 1.350 = 9.32

TOTAL AREA = 58.50



2BHK TYPE-5P CARPET AREA

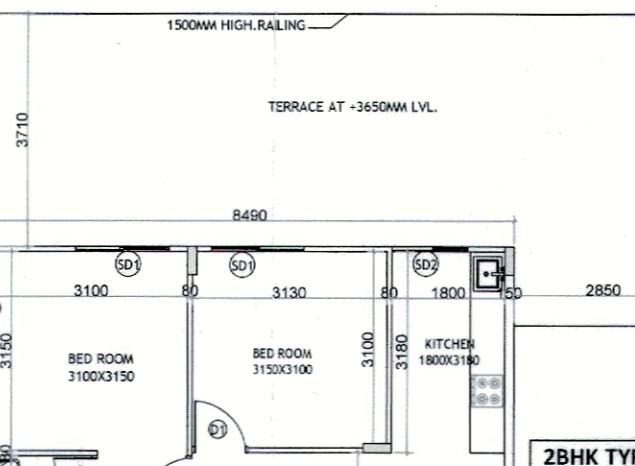
- 1.000 X 0.150 = 0.15
- 3.000 X 2.025 = 6.08
- 4.890 X 5.730 = 28.02
- 12.070 X 9.83 = 118.65
- 1.015 X 3.170 = 3.22
- 1.500 X 0.080 = 0.12
- 1.500 X 0.080 = 0.12
- 1.500 X 0.080 = 0.12

TOTAL CARPET AREA = 147.63

BALCONY/TERRACE AREA

- 2.230 X 1.650 = 3.68
- 5.190 X 1.350 = 7.01
- 1.980 X 2.380 = 4.71

TOTAL AREA = 160.03



2BHK TYPE-6P CARPET AREA

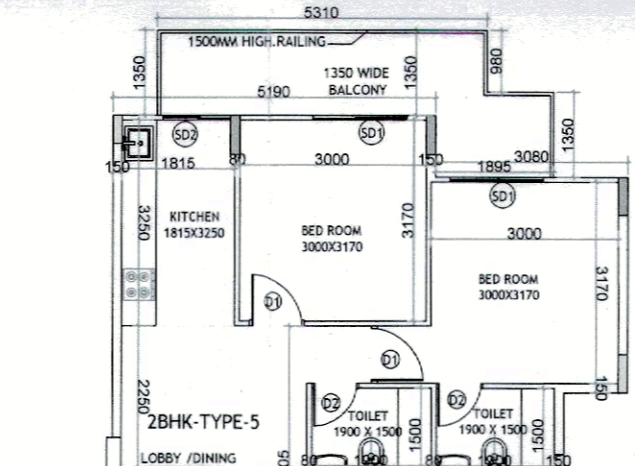
- 1.200 X 0.080 = 0.10
- 1.500 X 0.080 = 0.12
- 1.500 X 0.080 = 0.12
- 1.650 X 5.030 = 8.30
- 6.540 X 6.180 = 40.42
- 6.150 X 0.150 = 0.92

TOTAL CARPET AREA = 49.21

BALCONY/TERRACE AREA

- 2.850 X 1.450 = 4.13
- 6.490 X 3.710 = 24.19

TOTAL AREA = 77.52



2BHK TYPE-5 CARPET AREA

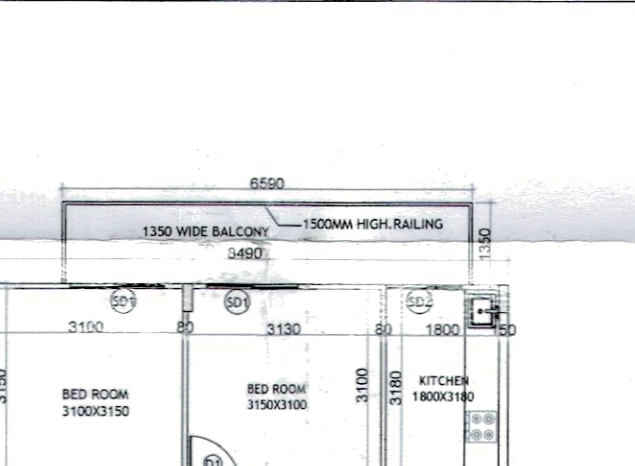
- 1.000 X 0.150 = 0.15
- 3.000 X 2.025 = 6.08
- 4.890 X 5.730 = 28.02
- 12.070 X 9.83 = 118.65
- 1.015 X 3.170 = 3.22
- 1.500 X 0.080 = 0.12
- 1.500 X 0.080 = 0.12
- 1.500 X 0.080 = 0.12

TOTAL CARPET AREA = 147.63

BALCONY/TERRACE AREA

- 2.230 X 1.650 = 3.68
- 5.190 X 1.350 = 7.01
- 1.980 X 2.380 = 4.71

TOTAL AREA = 160.03



2BHK TYPE-6 CARPET AREA

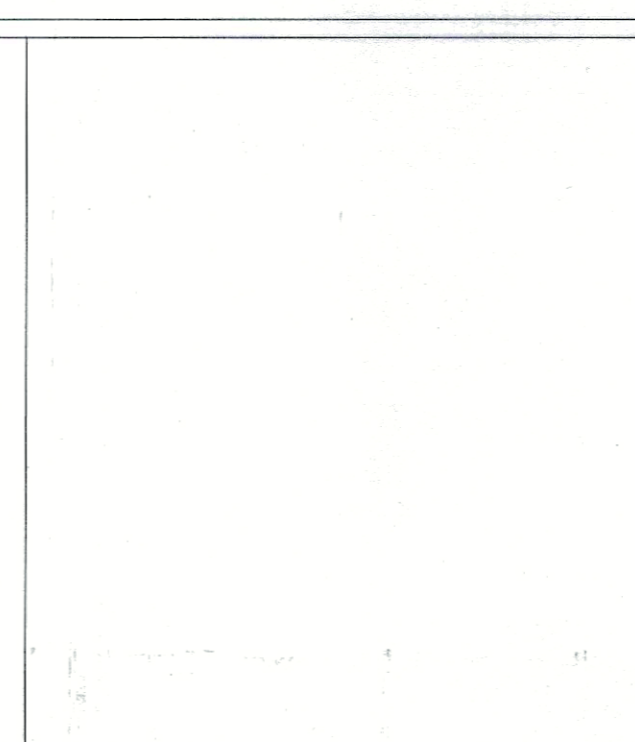
- 1.200 X 0.080 = 0.10
- 1.500 X 0.080 = 0.12
- 1.500 X 0.080 = 0.12
- 1.650 X 5.030 = 8.30
- 6.540 X 6.180 = 40.42
- 6.150 X 0.150 = 0.92

TOTAL CARPET AREA = 49.21

BALCONY/TERRACE AREA

- 6.900 X 1.350 = 9.32

TOTAL AREA = 58.53



3BHK TYPE-1PT CARPET AREA

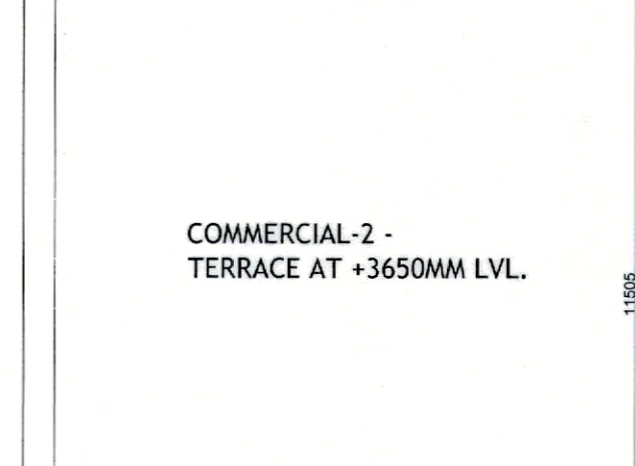
- 3.160 X 1.050 = 3.32
- 3.080 X 3.150 = 9.70
- 3.250 X 0.080 = 0.26
- 1.500 X 0.080 = 0.12
- 8.035 X 3.350 = 26.92
- 6.540 X 3.000 = 19.62
- 1.500 X 0.080 = 0.12

TOTAL CARPET AREA = 59.90

BALCONY/TERRACE AREA

- 19.770 X 1.270 = 25.11
- 1.580 X 3.350 = 5.29

TOTAL AREA = 91.30



3BHK TYPE-1PT CARPET AREA

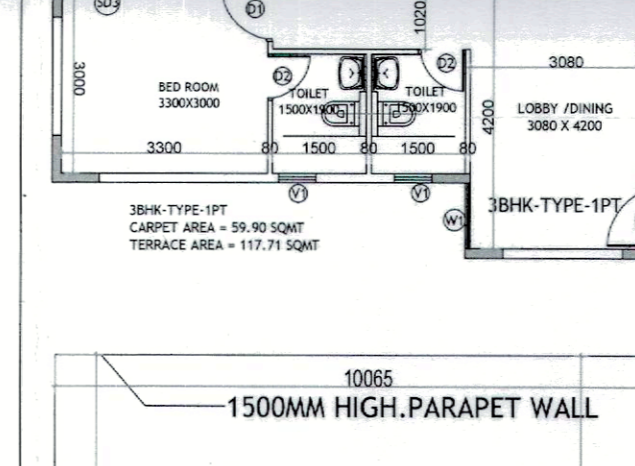
- 3.160 X 1.050 = 3.32
- 3.080 X 3.150 = 9.70
- 3.250 X 0.080 = 0.26
- 1.500 X 0.080 = 0.12
- 8.035 X 3.350 = 26.92
- 6.540 X 3.000 = 19.62
- 1.500 X 0.080 = 0.12

TOTAL CARPET AREA = 59.90

BALCONY/TERRACE AREA

- 19.770 X 1.270 = 25.11
- 1.580 X 3.350 = 5.29

TOTAL AREA = 91.30



3BHK TYPE-1PT CARPET AREA

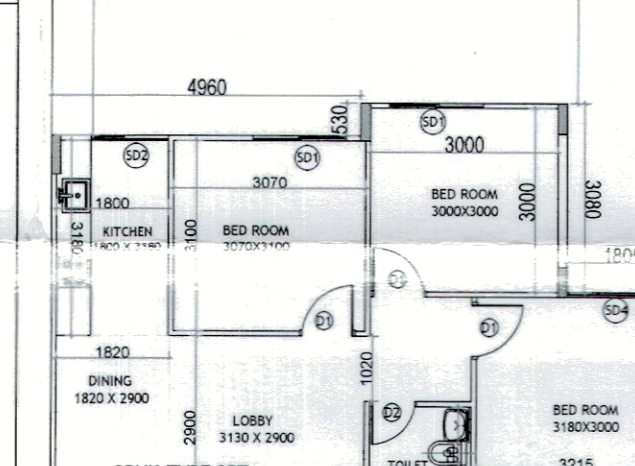
- 3.160 X 1.050 = 3.32
- 3.080 X 3.150 = 9.70
- 3.250 X 0.080 = 0.26
- 1.500 X 0.080 = 0.12
- 8.035 X 3.350 = 26.92
- 6.540 X 3.000 = 19.62
- 1.500 X 0.080 = 0.12

TOTAL CARPET AREA = 59.90

BALCONY/TERRACE AREA

- 19.770 X 1.270 = 25.11
- 1.580 X 3.350 = 5.29

TOTAL AREA = 91.30



3BHK TYPE-2PT CARPET AREA

- 1.250 X 1.300 = 1.63
- 3.390 X 0.530 = 1.80
- 3.110 X 1.430 = 4.45
- 4.880 X 3.000 = 14.64
- 8.030 X 5.500 = 44.17
- 6.250 X 0.080 = 0.50
- 1.500 X 0.080 = 0.12
- 8.000 X 0.530 = 4.24
- 1.500 X 0.080 = 0.12

TOTAL CARPET AREA = 76.63

BALCONY/TERRACE AREA

- 11.700 X 1.410 = 16.50
- 3.105 X 1.300 = 4.04
- 1.825 X 3.350 = 6.10

TOTAL AREA = 97.17

DTP (HQ)
S.T.P (R) Member Secretary B.P.A.C.
S.T.P (G) Member B.P.A.C.
CAR (HR) Chairman B.P.A.C.
ATP (HQ)
AD
PO
Parveen Kumar SD(HQ)
ATP

SANCTIONED TO BE READ WITH THIS OFFICE MEMO NO: 8935 DATED: 13/07/2026

S.NO	TOWER NO.	UNIT SUMMARY				TOTAL CARPET AREA	TOTAL BALCONY / TERRACE AREA
		UNIT TYPE	NO OF UNITS	CARPET AREA	BALCONY / TERRACE AREA		
1	TOWER-1	3BHK (TYPE-1P)	2	59.90	31.72	119.80	63.44
		3BHK (TYPE-1PT)	2	59.90	117.71	119.80	235.42
		3BHK (TYPE-2P)	2	59.90	32.27	119.86	42.54
		3BHK (TYPE-1)	2	59.90	108.84	119.86	217.68
2	TOWER-2	3BHK (TYPE-1P)	2	59.90	31.72	119.80	63.44
		3BHK (TYPE-1PT)	2	59.90	117.71	119.80	235.42
		3BHK (TYPE-2P)	2	59.90	32.27	119.86	42.54
		3BHK (TYPE-1)	2	59.90	108.84	119.86	217.68
3	TOWER-3	3BHK (TYPE-1P)	4	59.90	31.72	239.60	126.88
		3BHK (TYPE-1PT)	4	59.90	471.48	471.48	1286.86
		3BHK (TYPE-1)	2	59.90	102.29	114.80	535.08
		3BHK (TYPE-2)	2	59.90	32.46	116.36	543.92
4	TOWER-4	3BHK (TYPE-1P)	4	59.90	31.72	239.60	126.88
		3BHK (TYPE-1PT)	4	59.90	471.48	471.48	1286.86
		3BHK (TYPE-1)	2	59.90	102.29	114.80	535.08
		3BHK (TYPE-2)	2	59.90	32.46	116.36	543.92
5	TOWER-5	3BHK (TYPE-1P)	4	59.90	31.72	239.60	126.88
		3BHK (TYPE-1PT)	4	59.90	471.48	471.48	1286.86
		3BHK (TYPE-1)	2	59.90	102.29	114.80	535.08
		3BHK (TYPE-2)	2	59.90	32.46	116.36	543.92
6	TOWER-6	3BHK (TYPE-1P)	4	59.90	31.72	239.60	126.88
		3BHK (TYPE-1PT)	4	59.90	471.48	471.48	1286.86
		3BHK (TYPE-1)	2	59.90	102.29	114.80	535.08
		3BHK (TYPE-2)	2	59.90	32.46	116.36	543.92
7	TOWER-7	3BHK (TYPE-1P)	4	59.90	31.72	239.60	126.88
		3BHK (TYPE-1PT)	4	59.90	471.48	471.48	1286.86
		3BHK (TYPE-1)	2	59.90	102.29	114.80	535.08
		3BHK (TYPE-2)	2	59.90	32.46	116.36	543.92
8	TOWER-8	3BHK (TYPE-1P)	4	59.90	31.72	239.60	126.88
		3BHK (TYPE-1PT)	4	59.90	471.48	471.48	1286.86
		3BHK (TYPE-1)	2	59.90	102.29	114.80	535.08
		3BHK (TYPE-2)	2	59.90	32.46	116.36	543.92
9	TOWER-9	3BHK (TYPE-1P)	4	59.90	31.72	239.60	126.88
		3BHK (TYPE-1PT)	4	59.90	471.48	471.48	1286.86
		3BHK (TYPE-1)	2	59.90	102.29	114.80	535.08
		3BHK (TYPE-2)	2	59.90	32.46	116.36	543.92
10	TOWER-10	3BHK (TYPE-1P)	4	59.90	31.72	239.60	126.88
		3BHK (TYPE-1PT)	4	59.90	471.48	471.48	1286.86
		3BHK (TYPE-1)	2	59.90	102.29	114.80	535.08
		3BHK (TYPE-2)	2	59.90	32.46	116.36	543.92
11	TOWER-11	3BHK (TYPE-1P)	4	59.90	31.72	239.60	126.88
		3BHK (TYPE-1PT)	4	59.90	471.48	471.48	1286.86
		3BHK (TYPE-1)	2	59.90	102.29	114.80	535.08
		3BHK (TYPE-2)	2	59.90	32.46	116.36	543.92
12	TOWER-12	3BHK (TYPE-1P)	4	59.90	31.72	239.60	126.88
		3BHK (TYPE-1PT)	4	59.90	471.48	471.48	1286.86
		3BHK (TYPE-1)	2	59.90	102.29	114.80	535.08
		3BHK (TYPE-2)	2	59.90	32.46	116.36	543.92
13	TOWER-13	2BHK (TYPE-3P)	4	46.62	14.09	186.48	56.36
		2BHK (TYPE-4P)	4	49.18	11.27	196.72	45.08
		2BHK (TYPE-3)	4	49.18	11.27	196.72	45.08
		2BHK (TYPE-4)	4	49.18	9.32	242.24	48.64
14	TOWER-14	2BHK (TYPE-3P)	4	46.62	14.09	186.48	56.36
		2BHK (TYPE-4P)	4	49.18	11.27	196.72	45.08
		2BHK (TYPE-3)	4	49.18	11.27	196.72	45.08
		2BHK (TYPE-4)	4	49.18	9.32	242.24	48.64
15	TOWER-15	2BHK (TYPE-3P)	4	46.62	14.09	186.48	56.36
		2BHK (TYPE-4P)	4	49.18	11.27	196.72	45.08
		2BHK (TYPE-3)	4	49.18	11.27	196.72	45.08
		2BHK (TYPE-4)	4	49.18	9.32	242.24	48.64
16	TOWER-16	2BHK (TYPE-3P)	4	46.62	14.09	186.48	56.36
		2BHK (TYPE-4P)	4	49.18	11.27	196.72	45.08
		2BHK (TYPE-3)	4	49.18	11.27	196.72	45.08
		2BHK (TYPE-4)	4	49.18	9.32	242.24	48.64
17	TOWER-17	2BHK (TYPE-3P)	4	46.62	14.09	186.48	56.36
		2BHK (TYPE-4P)	4	49.18	11.27	196.72	45.08
		2BHK (TYPE-3)	4	49.18	11.27	196.72	45.08
		2BHK (TYPE-4)	4	49.18	9.32	242.24	48.64