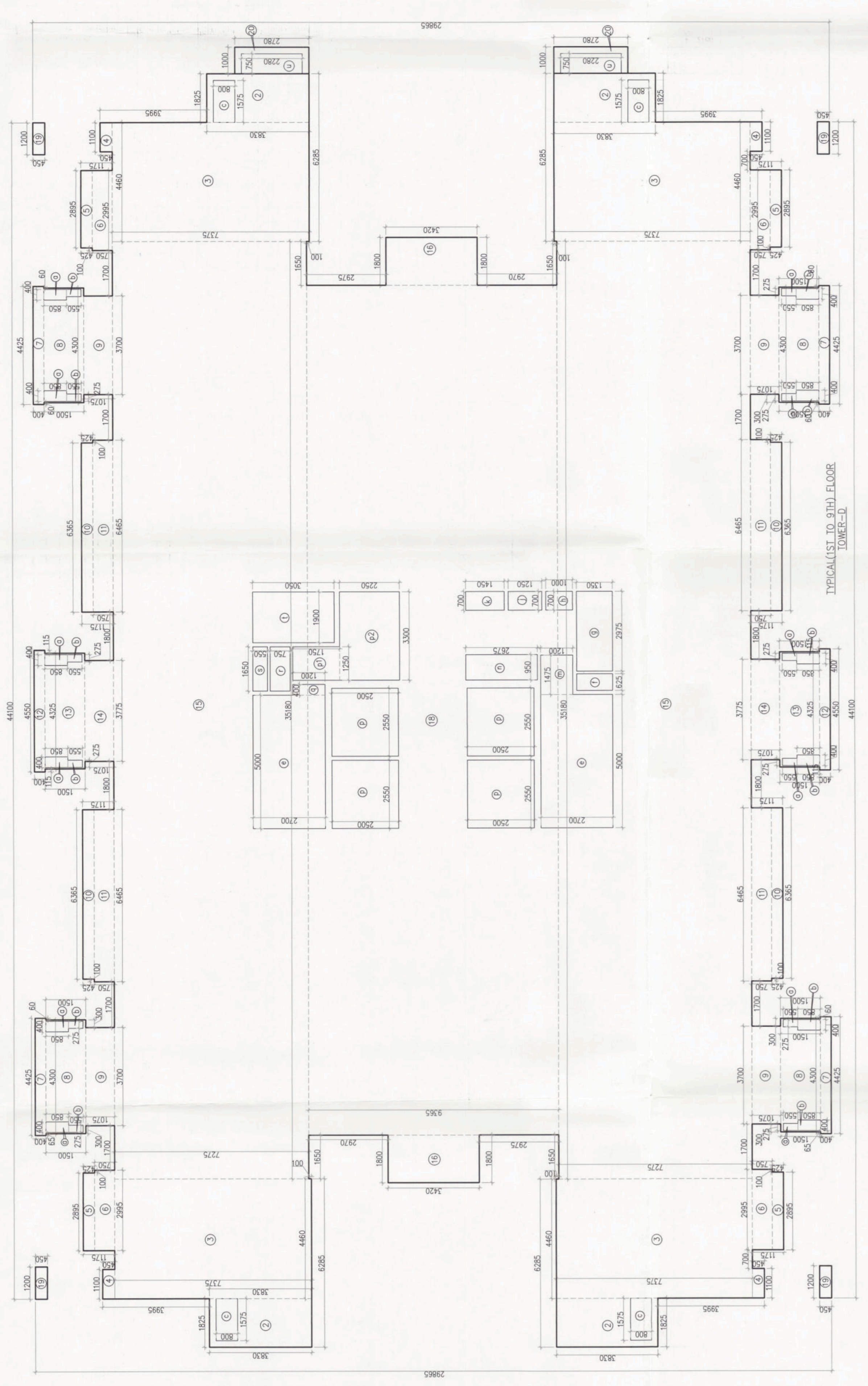
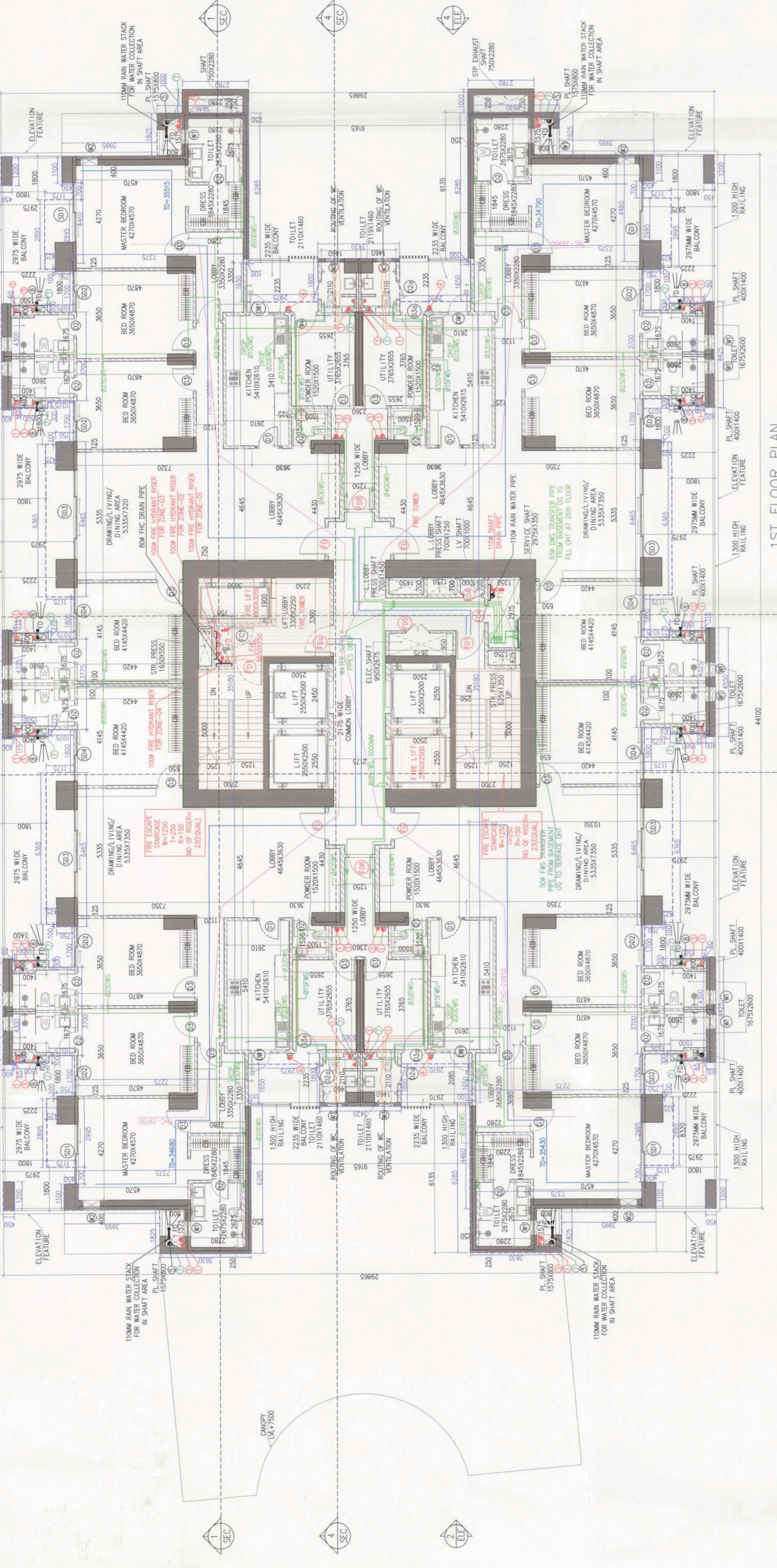


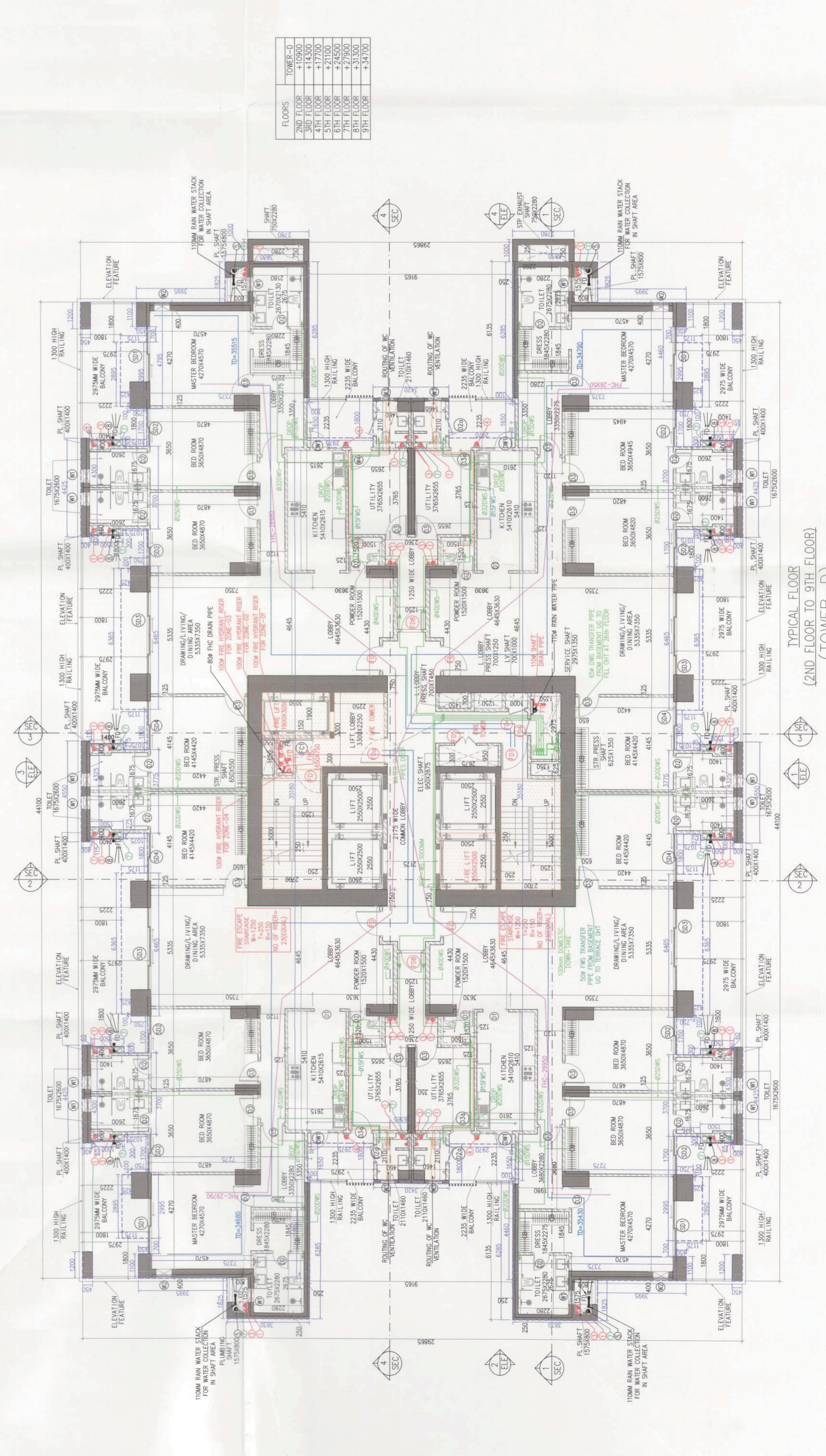
Note :-  
1. BUILDING WILL BE DESIGNED (STRUCTURES) AS PER RELEVANT IS CODES FOR EARTH QUAKE RESISTANCE.



1ST FLOOR PLAN  
LVL. +750.0  
(TOWER-D)



1ST FLOOR PLAN  
LVL. +750.0  
(TOWER-D)



2ND FLOOR PLAN  
LVL. +750.0  
(TOWER-D)

TABLE A.1 AREA CALCULATION OF TYPICAL FLOOR (TOWER-D)

NO.	DESCRIPTION	AREA (SQ.M)	NO.	DESCRIPTION	AREA (SQ.M)
1	GRASS - A	1.000	11	GRASS - B	1.000
2	GRASS - B	1.000	12	GRASS - C	1.000
3	GRASS - C	1.000	13	GRASS - D	1.000
4	GRASS - D	1.000	14	GRASS - E	1.000
5	GRASS - E	1.000	15	GRASS - F	1.000
6	GRASS - F	1.000	16	GRASS - G	1.000
7	GRASS - G	1.000	17	GRASS - H	1.000
8	GRASS - H	1.000	18	GRASS - I	1.000
9	GRASS - I	1.000	19	GRASS - J	1.000
10	GRASS - J	1.000	20	GRASS - K	1.000
<b>TOTAL</b>		<b>20.000</b>	<b>TOTAL</b>		<b>20.000</b>

TABLE B.1 DOORS AND WINDOW SCHEDULE (TYPICAL AND REUSE FLOOR)

SR. NO.	NAME	ROUGH OPENING	SILL HEIGHT	UNIT	LOCATION	TYPE
1	D1	2100 X 2100	0	2100	TOILETS	UPVC
2	D2	2100 X 2100	0	2100	TOILETS & UTILITY POWDER ROOM	UPVC
3	D3	2100 X 2100	0	2100	STAFF TOILET	UPVC
4	D4	2100 X 2100	0	2100	REAR TOILET	UPVC
5	D5	2100 X 2100	0	2100	UTILITY TOILET	UPVC
6	D6	2100 X 2100	0	2100	MASTER BEDROOM	UPVC
7	D7	2100 X 2100	0	2100	REAR BEDROOM	UPVC
8	D8	2100 X 2100	0	2100	LIVING ROOM	UPVC
9	D9	2100 X 2100	0	2100	KITCHEN	UPVC
10	D10	2100 X 2100	0	2100	REAR TERRACE	UPVC
11	D11	2100 X 2100	0	2100	REAR TERRACE	UPVC
12	D12	2100 X 2100	0	2100	REAR TERRACE	UPVC
13	D13	2100 X 2100	0	2100	REAR TERRACE	UPVC
14	D14	2100 X 2100	0	2100	REAR TERRACE	UPVC
15	D15	2100 X 2100	0	2100	REAR TERRACE	UPVC
16	D16	2100 X 2100	0	2100	REAR TERRACE	UPVC
17	D17	2100 X 2100	0	2100	REAR TERRACE	UPVC
18	D18	2100 X 2100	0	2100	REAR TERRACE	UPVC
19	D19	2100 X 2100	0	2100	REAR TERRACE	UPVC
20	D20	2100 X 2100	0	2100	REAR TERRACE	UPVC
21	D21	2100 X 2100	0	2100	REAR TERRACE	UPVC
22	D22	2100 X 2100	0	2100	REAR TERRACE	UPVC
23	D23	2100 X 2100	0	2100	REAR TERRACE	UPVC

TABLE C.1 WINDOW SCHEDULE (TYPICAL AND REUSE FLOOR)

SR. NO.	NAME	ROUGH OPENING	SILL HEIGHT	UNIT	LOCATION	TYPE
1	W1	2100 X 2100	0	2100	TOILETS	UPVC
2	W2	2100 X 2100	0	2100	TOILETS & UTILITY POWDER ROOM	UPVC
3	W3	2100 X 2100	0	2100	STAFF TOILET	UPVC
4	W4	2100 X 2100	0	2100	REAR TOILET	UPVC
5	W5	2100 X 2100	0	2100	UTILITY TOILET	UPVC
6	W6	2100 X 2100	0	2100	MASTER BEDROOM	UPVC
7	W7	2100 X 2100	0	2100	REAR BEDROOM	UPVC
8	W8	2100 X 2100	0	2100	LIVING ROOM	UPVC
9	W9	2100 X 2100	0	2100	KITCHEN	UPVC
10	W10	2100 X 2100	0	2100	REAR TERRACE	UPVC
11	W11	2100 X 2100	0	2100	REAR TERRACE	UPVC
12	W12	2100 X 2100	0	2100	REAR TERRACE	UPVC
13	W13	2100 X 2100	0	2100	REAR TERRACE	UPVC
14	W14	2100 X 2100	0	2100	REAR TERRACE	UPVC
15	W15	2100 X 2100	0	2100	REAR TERRACE	UPVC
16	W16	2100 X 2100	0	2100	REAR TERRACE	UPVC
17	W17	2100 X 2100	0	2100	REAR TERRACE	UPVC
18	W18	2100 X 2100	0	2100	REAR TERRACE	UPVC
19	W19	2100 X 2100	0	2100	REAR TERRACE	UPVC
20	W20	2100 X 2100	0	2100	REAR TERRACE	UPVC
21	W21	2100 X 2100	0	2100	REAR TERRACE	UPVC
22	W22	2100 X 2100	0	2100	REAR TERRACE	UPVC
23	W23	2100 X 2100	0	2100	REAR TERRACE	UPVC

- LEGEND
- 1. RED ROOMS (REAR TERRACE)
  - 2. RED ROOMS (REAR TERRACE)
  - 3. RED ROOMS (REAR TERRACE)
  - 4. RED ROOMS (REAR TERRACE)
  - 5. RED ROOMS (REAR TERRACE)
  - 6. RED ROOMS (REAR TERRACE)
  - 7. RED ROOMS (REAR TERRACE)
  - 8. RED ROOMS (REAR TERRACE)
  - 9. RED ROOMS (REAR TERRACE)
  - 10. RED ROOMS (REAR TERRACE)
  - 11. RED ROOMS (REAR TERRACE)
  - 12. RED ROOMS (REAR TERRACE)
  - 13. RED ROOMS (REAR TERRACE)
  - 14. RED ROOMS (REAR TERRACE)
  - 15. RED ROOMS (REAR TERRACE)
  - 16. RED ROOMS (REAR TERRACE)
  - 17. RED ROOMS (REAR TERRACE)
  - 18. RED ROOMS (REAR TERRACE)
  - 19. RED ROOMS (REAR TERRACE)
  - 20. RED ROOMS (REAR TERRACE)
  - 21. RED ROOMS (REAR TERRACE)
  - 22. RED ROOMS (REAR TERRACE)
  - 23. RED ROOMS (REAR TERRACE)

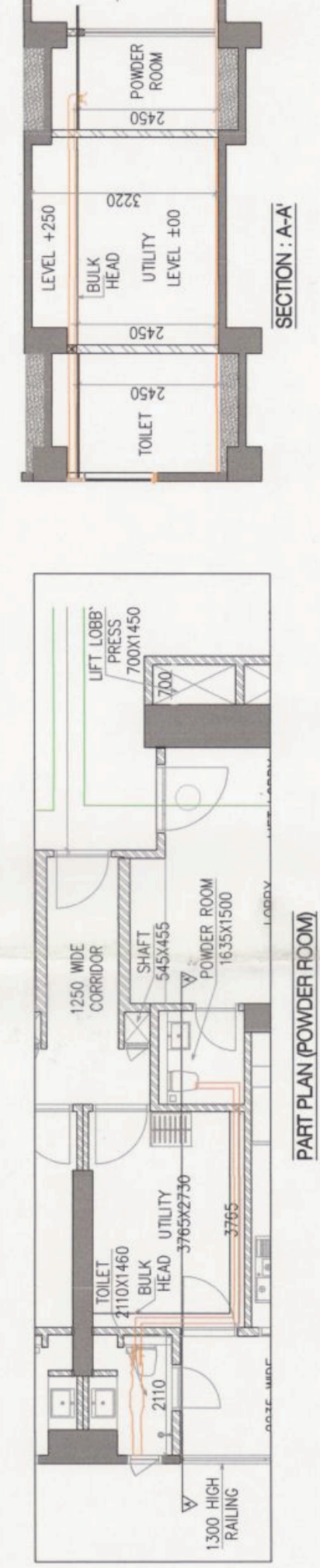


TABLE D.1 PART PLAN POWER ROOM

S. NO.	LOCATION	AREA	REMARKS
1	TYPICAL REAR TERRACE	21.00	REAR TERRACE
2	TYPICAL REAR TERRACE	21.00	REAR TERRACE
3	TYPICAL REAR TERRACE	21.00	REAR TERRACE
4	TYPICAL REAR TERRACE	21.00	REAR TERRACE
5	TYPICAL REAR TERRACE	21.00	REAR TERRACE
6	TYPICAL REAR TERRACE	21.00	REAR TERRACE
7	TYPICAL REAR TERRACE	21.00	REAR TERRACE
8	TYPICAL REAR TERRACE	21.00	REAR TERRACE
9	TYPICAL REAR TERRACE	21.00	REAR TERRACE
10	TYPICAL REAR TERRACE	21.00	REAR TERRACE
11	TYPICAL REAR TERRACE	21.00	REAR TERRACE
12	TYPICAL REAR TERRACE	21.00	REAR TERRACE
13	TYPICAL REAR TERRACE	21.00	REAR TERRACE
14	TYPICAL REAR TERRACE	21.00	REAR TERRACE
15	TYPICAL REAR TERRACE	21.00	REAR TERRACE
16	TYPICAL REAR TERRACE	21.00	REAR TERRACE
17	TYPICAL REAR TERRACE	21.00	REAR TERRACE
18	TYPICAL REAR TERRACE	21.00	REAR TERRACE
19	TYPICAL REAR TERRACE	21.00	REAR TERRACE
20	TYPICAL REAR TERRACE	21.00	REAR TERRACE
21	TYPICAL REAR TERRACE	21.00	REAR TERRACE
22	TYPICAL REAR TERRACE	21.00	REAR TERRACE
23	TYPICAL REAR TERRACE	21.00	REAR TERRACE

This is a PROFESSIONAL BUILDING PLAN approved only for the purpose of building. It is not valid for any other purpose. Options from the general public.

Checked and found ok by Public Health (Internal) Services only subject to compliance in drawing sheet No. 2008-B-001/2008-B-002/2008-B-003/2008-B-004/2008-B-005/2008-B-006/2008-B-007/2008-B-008/2008-B-009/2008-B-010/2008-B-011/2008-B-012/2008-B-013/2008-B-014/2008-B-015/2008-B-016/2008-B-017/2008-B-018/2008-B-019/2008-B-020/2008-B-021/2008-B-022/2008-B-023/2008-B-024/2008-B-025/2008-B-026/2008-B-027/2008-B-028/2008-B-029/2008-B-030/2008-B-031/2008-B-032/2008-B-033/2008-B-034/2008-B-035/2008-B-036/2008-B-037/2008-B-038/2008-B-039/2008-B-040/2008-B-041/2008-B-042/2008-B-043/2008-B-044/2008-B-045/2008-B-046/2008-B-047/2008-B-048/2008-B-049/2008-B-050/2008-B-051/2008-B-052/2008-B-053/2008-B-054/2008-B-055/2008-B-056/2008-B-057/2008-B-058/2008-B-059/2008-B-060/2008-B-061/2008-B-062/2008-B-063/2008-B-064/2008-B-065/2008-B-066/2008-B-067/2008-B-068/2008-B-069/2008-B-070/2008-B-071/2008-B-072/2008-B-073/2008-B-074/2008-B-075/2008-B-076/2008-B-077/2008-B-078/2008-B-079/2008-B-080/2008-B-081/2008-B-082/2008-B-083/2008-B-084/2008-B-085/2008-B-086/2008-B-087/2008-B-088/2008-B-089/2008-B-090/2008-B-091/2008-B-092/2008-B-093/2008-B-094/2008-B-095/2008-B-096/2008-B-097/2008-B-098/2008-B-099/2008-B-100/2008-B-101/2008-B-102/2008-B-103/2008-B-104/2008-B-105/2008-B-106/2008-B-107/2008-B-108/2008-B-109/2008-B-110/2008-B-111/2008-B-112/2008-B-113/2008-B-114/2008-B-115/2008-B-116/2008-B-117/2008-B-118/2008-B-119/2008-B-120/2008-B-121/2008-B-122/2008-B-123/2008-B-124/2008-B-125/2008-B-126/2008-B-127/2008-B-128/2008-B-129/2008-B-130/2008-B-131/2008-B-132/2008-B-133/2008-B-134/2008-B-135/2008-B-136/2008-B-137/2008-B-138/2008-B-139/2008-B-140/2008-B-141/2008-B-142/2008-B-143/2008-B-144/2008-B-145/2008-B-146/2008-B-147/2008-B-148/2008-B-149/2008-B-150/2008-B-151/2008-B-152/2008-B-153/2008-B-154/2008-B-155/2008-B-156/2008-B-157/2008-B-158/2008-B-159/2008-B-160/2008-B-161/2008-B-162/2008-B-163/2008-B-164/2008-B-165/2008-B-166/2008-B-167/2008-B-168/2008-B-169/2008-B-170/2008-B-171/2008-B-172/2008-B-173/2008-B-174/2008-B-175/2008-B-176/2008-B-177/2008-B-178/2008-B-179/2008-B-180/2008-B-181/2008-B-182/2008-B-183/2008-B-184/2008-B-185/2008-B-186/2008-B-187/2008-B-188/2008-B-189/2008-B-190/2008-B-191/2008-B-192/2008-B-193/2008-B-194/2008-B-195/2008-B-196/2008-B-197/2008-B-198/2008-B-199/2008-B-200/2008-B-201/2008-B-202/2008-B-203/2008-B-204/2008-B-205/2008-B-206/2008-B-207/2008-B-208/2008-B-209/2008-B-210/2008-B-211/2008-B-212/2008-B-213/2008-B-214/2008-B-215/2008-B-216/2008-B-217/2008-B-218/2008-B-219/2008-B-220/2008-B-221/2008-B-222/2008-B-223/2008-B-224/2008-B-225/2008-B-226/2008-B-227/2008-B-228/2008-B-229/2008-B-230/2008-B-231/2008-B-232/2008-B-233/2008-B-234/2008-B-235/2008-B-236/2008-B-237/2008-B-238/2008-B-239/2008-B-240/2008-B-241/2008-B-242/2008-B-243/2008-B-244/2008-B-245/2008-B-246/2008-B-247/2008-B-248/2008-B-249/2008-B-250/2008-B-251/2008-B-252/2008-B-253/2008-B-254/2008-B-255/2008-B-256/2008-B-257/2008-B-258/2008-B-259/2008-B-260/2008-B-261/2008-B-262/2008-B-263/2008-B-264/2008-B-265/2008-B-266/2008-B-267/2008-B-268/2008-B-269/2008-B-270/2008-B-271/2008-B-272/2008-B-273/2008-B-274/2008-B-275/2008-B-276/2008-B-277/2008-B-278/2008-B-279/2008-B-280/2008-B-281/2008-B-282/2008-B-283/2008-B-284/2008-B-285/2008-B-286/2008-B-287/2008-B-288/2008-B-289/2008-B-290/2008-B-291/2008-B-292/2008-B-293/2008-B-294/2008-B-295/2008-B-296/2008-B-297/2008-B-298/2008-B-299/2008-B-300/2008-B-301/2008-B-302/2008-B-303/2008-B-304/2008-B-305/2008-B-306/2008-B-307/2008-B-308/2008-B-309/2008-B-310/2008-B-311/2008-B-312/2008-B-313/2008-B-314/2008-B-315/2008-B-316/2008-B-317/2008-B-318/2008-B-319/2008-B-320/2008-B-321/2008-B-322/2008-B-323/2008-B-324/2008-B-325/2008-B-326/2008-B-327/2008-B-328/2008-B-329/2008-B-330/2008-B-331/2008-B-332/2008-B-333/2008-B-334/2008-B-335/2008-B-336/2008-B-337/2008-B-338/2008-B-339/2008-B-340/2008-B-341/2008-B-342/2008-B-343/2008-B-344/2008-B-345/2008-B-346/2008-B-347/2008-B-348/2008-B-349/2008-B-350/2008-B-351/2008-B-352/2008-B-353/2008-B-354/2008-B-355/2008-B-356/2008-B-357/2008-B-358/2008-B-359/2008-B-360/2008-B-361/2008-B-362/2008-B-363/2008-B-364/2008-B-365/2008-B-366/2008-B-367/2008-B-368/2008-B-369/2008-B-370/2008-B-371/2008-B-372/2008-B-373/2008-B-374/2008-B-375/2008-B-376/2008-B-377/2008-B-378/2008-B-379/2008-B-380/2008-B-381/2008-B-382/2008-B-383/2008-B-384/2008-B-385/2008-B-386/2008-B-387/2008-B-388/2008-B-389/2008-B-390/2008-B-391/2008-B-392/2008-B-393/2008-B-394/2008-B-395/2008-B-396/2008-B-397/2008-B-398/2008-B-399/2008-B-400/2008-B-401/2008-B-402/2008-B-403/2008-B-404/2008-B-405/2008-B-406/2008-B-407/2008-B-408/2008-B-409/2008-B-410/2008-B-411/2008-B-412/2008-B-413/2008-B-414/2008-B-415/2008-B-416/2008-B-417/2008-B-418/2008-B-419/2008-B-420/2008-B-421/2008-B-422/2008-B-423/2008-B-424/2008-B-425/2008-B-426/2008-B-427/2008-B-428/2008-B-429/2008-B-430/2008-B-431/2008-B-432/2008-B-433/2008-B-434/2008-B-435/2008-B-436/2008-B-437/2008-B-438/2008-B-439/2008-B-440/2008-B-441/2008-B-442/2008-B-443/2008-B-444/2008-B-445/2008-B-446/2008-B-447/2008-B-448/2008-B-449/2008-B-450/2008-B-451/2008-B-452/2008-B-453/2008-B-454/2008-B-455/2008-B-456/2008-B-457/2008-B-458/2008-B-459/2008-B-460/2008-B-461/2008-B-462/2008-B-463/2008-B-464/2008-B-465/2008-B-466/2008-B-467/2008-B-468/2008-B-469/2008-B-470/2008-B-471/2008-B-472/2008-B-473/2008-B-474/2008-B-475/2008-B-476/2008-B-477/2008-B-478/2008-B-479/2008-B-480/2008-B-481/2008-B-482/2008-B-483/2008-B-484/2008-B-485/2008-B-486/2008-B-487/2008-B-488/2008-B-489/2008-B-490/2008-B-491/2008-B-492/2008-B-493/2008-B-494/2008-B-495/2008-B-496/2008-B-497/2008-B-498/2008-B-499/2008-B-500/2008-B-501/2008-B-502/2008-B-503/2008-B-504/2008-B-505/2008-B-506/2008-B-507/2008-B-508/2008-B-509/2008-B-510/2008-B-511/2008-B-512/2008-B-513/2008-B-514/2008-B-515/2008-B-516/2008-B-517/2008-B-518/2008-B-519/2008-B-520/2008-B-521/2008-B-522/2008-B-523/2008-B-524/2008-B-525/2008-B-526/2008-B-527/2008-B-528/2008-B-529/2008-B-530/2008-B-531/2008-B-532/2008-B-533/2008-B-534/2008-B-535/2008-B-536/2008-B-537/2008-B-538/2008-B-539/2008-B-540/2008-B-541/2008-B-542/2008-B-543/2008-B-544/2008-B-545/2008-B-546/2008-B-547/2008-B-548/2008-B-549/2008-B-550/2008-B-551/2008-B-552/2008-B-553/2008-B-554/2008-B-555/2008-B-556/2008-B-557/2008-B-558/2008-B-559/2008-B-560/2008-B-561/2008-B-562/2008-B-563/2008-B-564/2008-B-565/2008-B-566/2008-B-567/2008-B-568/2008-B-569/2008-B-570/2008-B-571/2008-B-572/2008-B-573/2008-B-574/2008-B-575/2008-B-576/2008-B-577/2008-B-578/2008-B-579/2008-B-580/2008-B-581/2008-B-582/2008-B-583/2008-B-584/2008-B-585/2008-B-586/2008-B-587/2008-B-588/2008-B-589/2008-B-590/2008-B-591/2008-B-592/2008-B-593/2008-B-594/2008-B-595/2008-B-596/2008-B-597/2008-B-598/2008-B-599/2008-B-600/2008-B-601/2008-B-602/2008-B-603/2008-B-604/2008-B-605/2008-B-606/2008-B-607/2008-B-608/2008-B-609/2008-B-610/2008-B-611/2008-B-612/2008-B-613/2008-B-614/2008-B-615/2008-B-616/2008-B-617/2008-B-618/2008