

60 M WIDE SECTOR ROAD

120.70m
12 M WIDE WEST AVENUE ROAD

984.4m - b7cp 9131 (1) Date: 16/01/24

(S. KUTTU DT (IN))

(RAM AYAR BASSI DT (IN))

(S. KUTTU DT (IN))

(S. KUTTU DT (IN))

(S. KUTTU DT (IN))

(S. KUTTU DT (IN))

(S. KUTTU DT (IN))

(S. KUTTU DT (IN))

(S. KUTTU DT (IN))

(S. KUTTU DT (IN))

(S. KUTTU DT (IN))

(S. KUTTU DT (IN))

(S. KUTTU DT (IN))

(S. KUTTU DT (IN))

(S. KUTTU DT (IN))

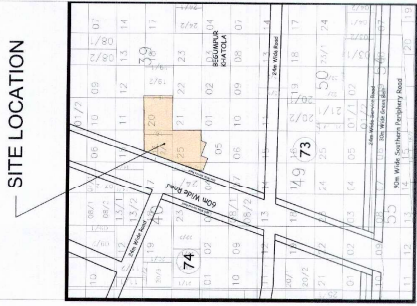
(S. KUTTU DT (IN))

(S. KUTTU DT (IN))

(S. KUTTU DT (IN))

(S. KUTTU DT (IN))

(S. KUTTU DT (IN))



KEY PLAN



DLF HOME DEVELOPERS LTD.

PROJECT TITLE
ALAMEDA CENTRAL COMMERCIAL PLOTTED
COLONY SCO'S ON THE AREA MEASURING
3.15825 ACRES AT SECTOR 73, VILLAGE
BEGUMPUR KHATOLA, GURUGRAM

SHEET TITLE
SITE PLAN & CALCULATIONS
(REVISED)

Document Release Type
SUBMISSION DRAWING

Job No.
Scale
1:300 ON A1 SHEET

Date
04 DEC, 2023

Drawn by
AR-73-SITE PLAN

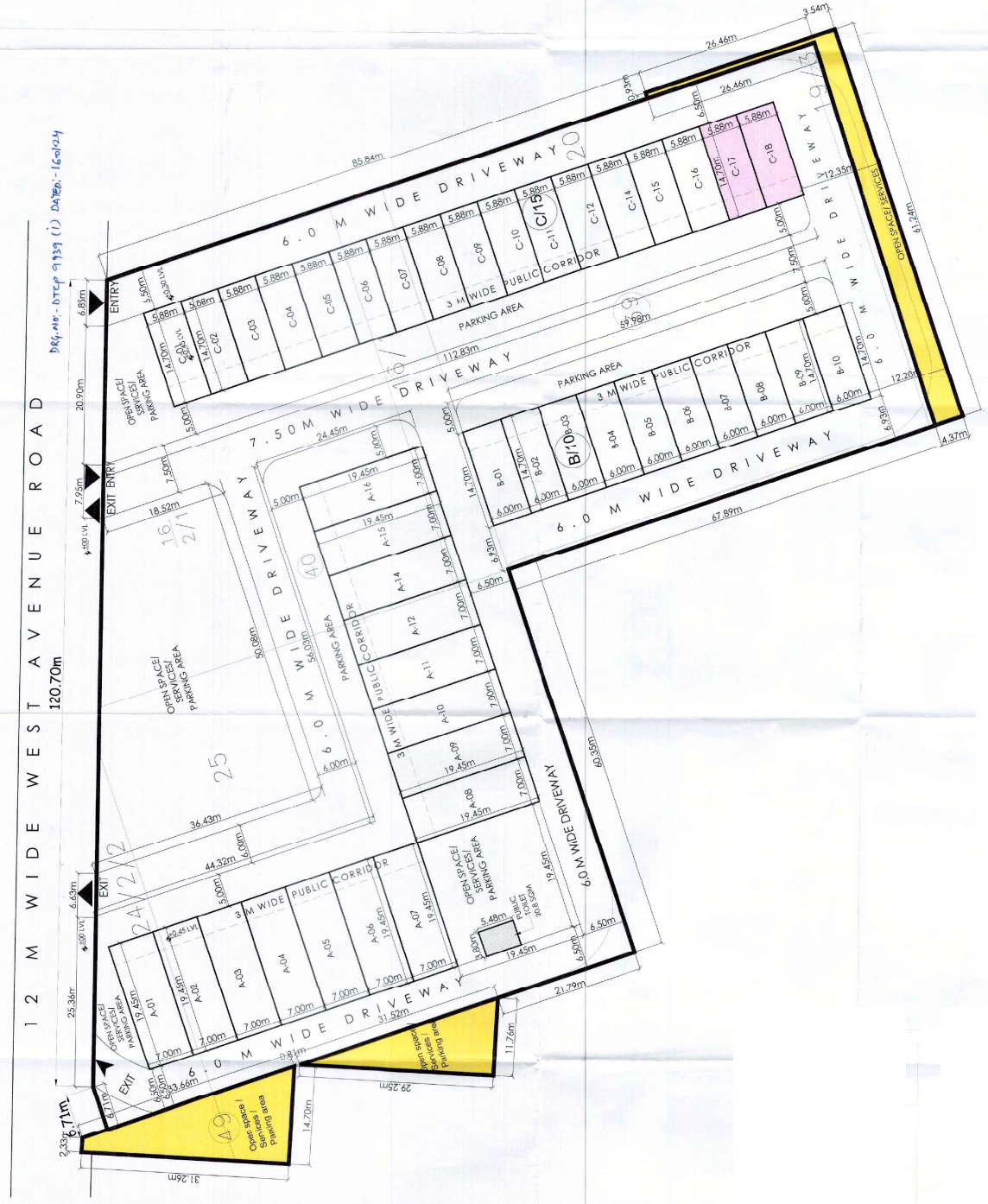
Checked by
R1

Revision No.
R1

ARCHITECT
S. KUTTU DT (IN)
CA/2006/85330

ARCHITECT TOWN PLANNER

AUTHORISED SIGNATORY



LICENCED AREA
(If ready General Standard Design of SCDs Approval
Memo no. 2P-1666/JRA/2022/24208 dated 14.11.2022)
LICENCE NO. 138 of 2022 dated 09.09.2022)

ADDITIONAL AREA
(LICENCE NO. 237 of 2023 dated 03.11.2023)

TOTAL AREA
3.15825 ACS.

REVISION IN EARLIER APPROVED LAYOUT

